

ParanTek supplies videos module solutions to customers from the following industries;

CCTV



ITS



Reinforcement



Military



Smart Systems



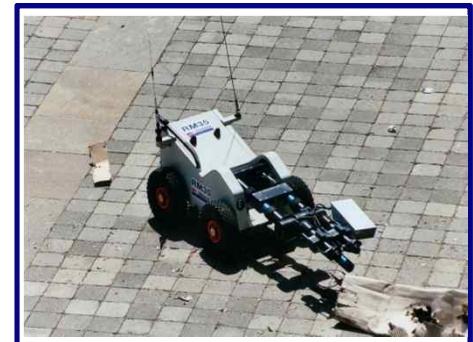
ATM



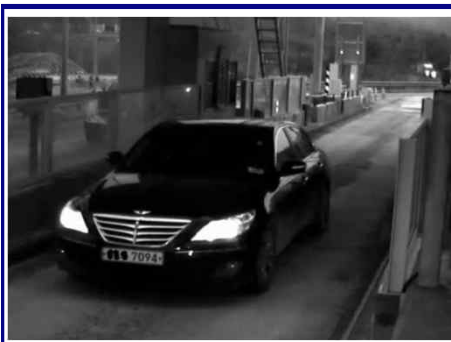
Inspection



Robotics



LPR



Vehicle



Health



Entertainment



TYPE	Model Name	PCB Size	Image Sensor	ISP	Max. Res.	Lens	TDN	OSD	Comm.	UTC	LED CTL	Audio	Outputs	WDR	DSS (Sens-up)	DNR	Lens Holder	Voltage	Status	
ANALOG CVBS	ACC-760	32x32mm 1-Board	1/3" Sharp CCD 520K (RJ2331BA) – NTSC 610K (RJ2341BA) – PAL	Nextchip NVP2090	960H WD1	DC/Fixed	Yes	OSD Joystick OSD Port	-	Yes	Yes	-	CVBS	-	-	2D	Option	DC 12V	M/P Stock Sale	
	ACC-1Q0	32x32mm 1-Board	1/3" Sharp CCD 520K (RJ2331BA) – NTSC 610K (RJ2341BA) – PAL	Nextchip NVP2090	960H WD1	Fixed Only	Yes	OSD Joystick OSD Port	-	Yes	Yes	Option	CVBS	-	-	2D	Option	DC 5~12V	M/P Stock Sale	
	ACC-890	28x28mm 1-Board	1/3" Sharp CCD 520K (RJ2331BA) – NTSC 610K (RJ2341BA) – PAL	Eyenix EN574	960H WD1	Fixed Only	-	OSD Joystick	-	-	-	Option	CVBS	-	Yes (X512)	3D	-	DC 5~12V	M/P Stock Sale	
	ACC-840	26x26mm 1-Board	1/3" Sony WDR CMOS 1MP (ISX017) – NTSC	SOC	960H WD1	Fixed Only	-	OSD Port	-	-	-	-	CVBS	Yes	-	2D	-	DC 15V	Production w/ Order	
	ACC-1P0	19.6x19.8mm 2-Board	1/3" Sharp CCD 520K (RJ2331BA) – NTSC 610K (RJ2341BA) – PAL	Eyenix EN574	960H WD1	Fixed Only	-	OSD Port	-	-	-	-	CVBS	-	Yes (X512)	3D	-	DC 5~12V	Production w/ Order	
	ACC-660	14x14mm 1-Board	1/4" CMOS 350K – NTSC, PAL	SOC	720H D1	Fixed Only	-	-	-	-	-	-	CVBS	-	-	2D	-	DC 3.3V	Production w/ Order	
ANALOG AHD	ACC-940	42x42mm 1-Board	1/2.8" Sony CMOS 2M (IMX327)	Eyenix EN781	1080p 25/30	DC/Fixed Semi AF	Yes	OSD Joystick OSD Port	RS232C Serial Protocol	Yes	Yes	-	AHD 2.0	Yes	Yes (X32)	3D	Option	DC 12V	M/P Stock Sale	
	ACC-600	32x32mm 1-Board	1/3" Sony CMOS 1M (IMX225)	Nextchip NVP2431	720p 25/30	Fixed Only	-	OSD Joystick OSD Port	-	Yes	Yes	Option	AHD 1.0	-	-	2D	Option	DC 5~12V	Production w/ Order	
	ACC-730	32x32mm 1-Board	1/2.9" Sony CMOS 2M (IMX323)	Nextchip NVP2470	1080p 25/30	Fixed Only	Yes	OSD Joystick OSD Port	-	Yes	Yes	Option	AHD 2.0	-	-	2D	Option	DC 12V	M/P Stock Sale	
	ACC-580	32x32mm 1-Board	1/3" Panasonic CMOS 2M (MN34227)	Nextchip NVP2440	1080p 25/30	DC/Fixed	Yes	OSD Joystick OSD Port	RS232C	Yes	Yes	-	AHD 2.0	-	Yes (X30)	3D	Option	DC 12V	Clearance Sale	
	ACC-830	32x32mm 1-Board	1/3" Panasonic CMOS 2M (MN34229)	Eyenix EN771	1080p 25/30	DC/Fixed	Yes	OSD Joystick OSD Port	RS232C	Yes	Yes	-	AHD 2.0	Yes	Yes (X32)	2D	Option	DC 12V	Clearance Sale	
	ACC-860	32x32mm 1-Board	1/2.8" Sony CMOS 5M (IMX335)	Nextchip NVP2477	1944p 22	Fixed Only	Yes	OSD Joystick OSD Port	-	Yes	Yes	Option	AHD 3.0	-	-	3D	Option	DC 5~12V	M/P Stock Sale	
	ACC-570	28x28mm 1-Board	1/3" Panasonic CMOS 2M (MN34227)	Nextchip NVP2440	1080p 25/30	Fixed Only	-	OSD Joystick	-	Yes	-	Option	AHD 2.0	-	Yes (X30)	3D	-	DC 5~12V	Clearance Sale	
	ACC-1E0	28x28mm 1-Board	1/3" Sony CMOS 2M (IMX327)	Eyenix EN781	1080p 25/30	Fixed Only	-	OSD Joystick	RS232C Serial Protocol	Yes	-	-	AHD 2.0	Yes	Yes (X32)	3D	-	DC 5~12V	M/P Stock Sale	
	ACC-880	Informal	1/2.7" CMOS 2M	SOC	1080p 25/30	Fixed Only	-	-	-	-	Yes	-	-	AHD 2.0	-	-	2D	Option	DC 5~12V	M/P Stock Sale
	ACC-620	23x23mm 1-Board	1/3" Panasonic CMOS 2M (MN34227)	Nextchip NVP2440	1080p 25/30	Fixed Only	-	-	-	-	Yes	-	-	AHD 2.0	-	Yes (X30)	3D	-	DC 5~12V	Priced to move
	ACC-900	21x21mm 2-boards	1/2.8" Sony CMOS 5M (IMX335)	Eyenix EN781	1080p 25/30	Fixed Only	-	-	RS232C Serial Protocol	-	-	-	AHD 3.0	Yes	Yes (X32)	3D	-	DC 3.3V	Production w/ Order	
	ACC-1C0	19.4Ø 1-Board	1/2.7" CMOS 2M	SOC	1080p 25/30	Fixed Only	-	-	-	-	Yes	-	-	AHD 2.0	-	-	2D	-	DC 3.3V	Production w/ Order
	ACC-1G0	17Ø and etc. 3-Boards	1/2.8" Sony CMOS 2M (IMX328)	Eyenix EN781	1080p 25/30	Fixed Only	-	Cable OSD (Option)	RS485 Serial Protocol	Yes	-	-	AHD 2.0	Yes	Yes (X32)	3D	-	DC 5~12V	M/P Stock Sale	

TYPE	Model Name	PCB Size	Image Sensor	ISP	Max. Res.	Lens	TDN	OSD	Comm.	UTC	LED CTL	Audio	Outputs	WDR	DSS (Sens-up)	DNR	Lens Holder	Voltage	Status
DIGITAL SDI	DCC-940	42x42mm 1-Board	1/2.8" Sony CMOS 2M (IMX327)	Eyenix EN781	1080p 25/30	DC/Fixed Semi AF	Yes	OSD Joystick OSD Port	RS232C Serial Protocol	-	Yes	-	SDI CVBS	Yes	Yes (X32)	3D	Option	DC 12V	M/P Stock Sale
	DCC-9460	42x42mm 1-Board	1/2.8" Sony CMOS 2M (IMX327)	Eyenix EN781F	1080p 50/60	DC/Fixed Semi AF	Yes	OSD Joystick OSD Port	RS232C Serial Protocol	-	Yes	-	SDI CVBS	Yes	Yes (X32)	3D	Option	DC 12V	M/P Stock Sale
	DCC-650	42x42mm 1-Board	1/1.9" Sony CMOS 2M (IMX185)	Eyenix EN778	1080p 50/60	DC/Fixed	Yes	OSD Joystick OSD Port	RS232C Serial Protocol	-	Yes	-	SDI CVBS	Yes	Yes (X32)	3D	Option	DC 12V	M/P Stock Sale
	DCC-530	42x42mm 2-Board	1/3" Sharp CCD 2M (RJ33N3AA)	N/A	1080p 25	DC/Fixed	Yes	OSD Joystick OSD Port	RS232C Serial Protocol	-	Yes	-	SDI	-	-	3D	Option	DC 12V	Production w/ Order
	DCC-830	32x32mm 1-Board	1/3" Panasonic CMOS 2M (MN34229)	Eyenix EN771	1080p 25/30	DC/Fixed	Yes	OSD Joystick OSD Port	RS232C	-	Yes	-	SDI CVBS	Off On	Yes (X32)	3D 2D	Option	DC 12V	Clearance Sale
	DCC-1E0	28x28mm 1-Board	1/2.8" Sony CMOS 2M (IMX327)	Eyenix EN781	1080p 25/30	Fixed Only	-	OSD Joystick OSD Port	RS232C Serial Protocol	-	-	-	SDI CVBS	Yes	Yes (X32)	3D	-	DC 5~12V	MP Stock Sale
	DCC-1E60	28x28mm 1-Board	1/2.8" Sony CMOS 2M (IMX327)	Eyenix EN781F	1080p 50/60	Fixed Only	-	OSD Joystick OSD Port	RS232C Serial Protocol	-	-	-	SDI CVBS	Yes	Yes (X32)	3D	-	DC 5~12V	MP Stock Sale
	DCC-800	25Ø and etc. 2-Boards	1/2.8" Sony CMOS 2M (IMX291)	Eyenix EN778	1080p 50/60	Fixed Only	-	OSD Joystick	RS232C Serial Protocol	-	-	-	SDI CVBS	Yes	Yes (X32)	3D	Option	DC 12V	M/P Stock Sale
	DCC-920	22x22mm 2-Boards	1/2.8" Sony CMOS 2M (IMX327)	Eyenix EN781	1080p 25/30	Fixed Only	-	-	RS232C Serial Protocol	-	-	-	SDI CVBS	Yes	Yes (X32)	3D	-	DC 12V	Production w/ Order
	DCC-1N0	21Ø Like 2-Boards	1/2.8" Sony CMOS 2M (IMX327)	Eyenix EN781	1080p 25/30	Fixed Only	-	-	RS232C Serial Protocol	-	-	-	SDI	Yes	Yes (X32)	3D	-	DC 3.3V	Production w/ Order
	DCC-1G0	17Ø and etc. 3-Boards	1/2.8" Sony CMOS 2M (IMX327)	Eyenix EN781	1080p 25/30	Fixed Only	-	OSD Port	RS485 Serial Protocol	-	-	-	SDI CVBS	Yes	Yes (X32)	3D	-	DC 5~12V	MP Stock Sale
	DCC-1G60	17Ø and etc. 3-Boards	1/2.8" Sony CMOS 2M (IMX327)	Eyenix EN781F	1080p 50/60	Fixed Only	-	OSD Port	RS485 Serial Protocol	-	-	-	SDI CVBS	Yes	Yes (X32)	3D	-	DC 5~12V	MP Stock Sale
	DIGITAL USB2.0	DCC-150	28x28mm 1-Board	1/3" CMOS 350K	SOC	VGA	Fixed Only	-	-	-	-	-	-	USB (YUV)	-	-	2D	-	DC 5V Via USB
DCC-1E0		28x28mm 1-Board	1/3" WDR CMOS 350K	SOC	VGA	Fixed Only	-	-	-	-	-	-	USB (YUV)	Yes	-	2D	Option	DC 5V Via USB	M/P Stock Sale
DCC-450		28x28mm 1-Board	1/3" CMOS 1M	SOC	720p 30	Fixed Only	-	-	-	-	-	-	USB (MJPEG/YUV)	-	-	2D	Option	DC 5V Via USB	Clearance Sale
DCC-490		28x28mm 1-Board	1/3" WDR CMOS 1M	SOC	720p 30	Fixed Only	-	-	-	-	-	-	USB (MJPEG/YUV)	Yes	-	2D	Option	DC 5V Via USB	M/P Stock Sale
DCC-870		28x28mm 1-Board	1/2.9" Sony CMOS 2M (IMX323)	SOC	1080p 30	Fixed Only	-	-	-	-	-	-	USB (MJPEG)	-	-	2D	Option	DC 5V Via USB	Production w/ Order

TYPE	Model Name	PCB Size	Image Sensor	ISP	Max. Res.	Lens	TDN	OSD	Comm.	UTC	LED CTL	Audio	Other Outputs	WDR	DSS (Sens-up)	DNR	Lens Holder	Voltage	Status
DIGITAL IP	DCC-1K0	32x32mm 1-Board	1/2.8" Sony CMOS 2M (IMX327)	Eyenix EN673	1080p 25/30	Fixed Only	-	Web-page	Network Protocol	-	-	Yes C-Mic.	IP (H.264)	Yes	X32	3D	Option	DC 12V POE Opt.	M/P Stock Sale
	DCC-960	32x32mm 1-Board	1/2.8" Sony CMOS 2M (IMX327)	Eyenix EN673	1080p 25/30	Fixed Only	Yes	Web-page	Network Protocol	-	Yes	-	IP (H.264)	Yes	X32	3D	Option	DC 12V POE Opt.	M/P Stock Sale
	DCC-1A0	28x28mm 1-Board	1/2.8" Sony CMOS 2M (IMX327)	Eyenix EN673	1080p 25/30	Fixed Only	-	Web-page	Network Protocol	-	-	-	IP (H.264)	Yes	X32	3D	-	DC 12V POE Opt.	M/P Stock Sale
	DCC-1H0	17Ø and etc. 3-Boards	1/2.8" Sony CMOS 2M (IMX327)	Eyenix EN673	1080p 25/30	Fixed Only	-	Web-page	Network Protocol	-	-	-	IP (H.264)	Yes	X32	3D	-	DC 12V POE Opt.	M/P Stock Sale
DIGITAL BT.1120	DCC-6510	42x42mm 1-Board	1/1.9" Sony CMOS 2M (IMX185)	Eyenix EN778	1080p 50/60	DC/Fixed Semi-AF	Yes	OSD Joystick OSD Port	RS232C Serial Protocol	-	Yes	-	BT.1120 CVBS	Yes	Yes (X32)	3D	Option	DC 12V	M/P Stock Sale
	DCC-6520	42x42mm 1-Board	1/1.9" Sony CMOS 2M (IMX185)	Eyenix EN778	1080p 50/60	DC/Fixed Semi-AF	Yes	OSD Joystick OSD Port	RS232C Serial Protocol	-	Yes	-	BT.1120 SDI & CVBS	Yes	Yes (X32)	3D	Option	DC 12V	M/P Stock Sale
	DCC-9410	42x42mm 1-Board	1/2.8" Sony CMOS 2M (IMX327)	Eyenix EN781	1080p 25/30	DC/Fixed Semi AF	Yes	OSD Joystick OSD Port	RS232C Serial Protocol	-	Yes	-	BT.1120 CVBS	Yes	Yes (X32)	3D	Option	DC 12V	M/P Stock Sale
	DCC-9420	42x42mm 1-Board	1/2.8" Sony CMOS 2M (IMX327)	Eyenix EN781	1080p 25/30	DC/Fixed Semi AF	Yes	OSD Joystick OSD Port	RS232C Serial Protocol	-	Yes	-	BT.1120 SDI & CVBS	Yes	Yes (X32)	3D	Option	DC 12V	M/P Stock Sale
	DCC-950	42x42mm 1-Board	1/2.8" Sony CMOS 2M (IMX327)	Eyenix EN781	1080p 25/30	Fixed Only	Yes	OSD Joystick OSD Port	RS232C Serial Protocol	-	Yes	-	BT.1120 CVBS	Yes	Yes (X32)	3D	Option	DC 12V	Production w/ Order
	DCC-740	32x32mm 2-Board	1/3" Sharp B/W CCD 2M (RJ33N4AA)	N/A	1080p 25	DC/Fixed	-	OSD Joystick OSD Port	RS232C Serial Protocol	-	-	-	BT.1120	-	-	3D	Option	DC 12V	Production w/ Order
	DCC-7410	32x32mm 2-Board	1/3" Sharp CCD 2M (RJ33N3AA)	N/A	1080p 25	DC/Fixed	-	OSD Joystick OSD Port	RS232C Serial Protocol	-	-	-	BT.1120	-	-	3D	Option	DC 12V	Production w/ Order
	DCC-750	32x32mm 2-Board	1/3" Panasonic CMOS 2M (MN34229)	Eyenix EN778	1080p 50/60	DC/Fixed	Yes	OSD Joystick OSD Port	RS232C Serial Protocol	-	-	-	BT.1120 CVBS	-	Yes (X32)	3D	Option	DC 12V	M/P Stock Sale
Digital LVDS	DCC-Z3520	55.6(W)x64(H)x124(D)	1/2" Sony CMOS 2M (IMX385)	N/A	1080p 50/60	AF X35 6~210mm	Yes	OSD Port	RS232C Serial Protocol	-	-	-	LVDS-SDI CVBS	Yes	Yes (X30)	3D	-	DC 12V	M/P Stock Sale
	DCC-Z3020	96.6(W)x50(H)x60(D)	1/2.8" Sony CMOS 2M (IMX327)	N/A	1080p 50/60	AF X30 4.7~141mm	Yes	OSD Port	RS232C Serial Protocol	-	-	-	LVDS-SDI CVBS	Yes	Yes (X30)	3D	-	DC 12V	M/P Stock Sale
	DCC-Z2021	50(W)x60(H)x87(D)	1/3" Panasonic CMOS 2M (MN34422)	N/A	1080p 50/60	AF X20 4.7~94mm	Yes	OSD Port	RS232C Serial Protocol	-	-	-	LVDS-SDI CVBS	Yes	Yes (X30)	3D	-	DC 12V	M/P Stock Sale
	DCC-Z1022	43.6(W)x45.3(H)x67(D)	1/2.8" Sony CMOS 2M (IMX307)	N/A	1080p 50/60	AF X10 4.7~47mm	Yes	OSD Port	RS232C Serial Protocol	-	-	-	LVDS-SDI CVBS	Yes	Yes (X30)	3D	-	DC 12V	M/P Stock Sale

Model Naming

Without Lens

DCC - M I 490 - F - 2/4P*2
 ① ② ③ ④ ⑤ ⑥

- ① **ACC** Analog Output Camera Module
DCC Digital Output Camera Module
- ② **A** No Lens holder
E D14 type Lens holder
M M12 type Lens holder
H M12 type Pinhole Lens holder (Short neck)
U CS Lens holder
K Mechanical TDN ICR with M12 type holder
T Mechanical TDN ICR without Lens holder (Box Camera)
- ③ **None** "Empty" when there is no Filter at all
B Band-pass(850nM only) Filter
D All-pass(Dummy) Filter
I IR-Cut Filter
N IR-pass(Flash + 940nM) Filter
R IR-pass(Flash + 850nM) Filter
- ④ **490** Module Number
490A With Audio Microphone together
490N/P Mostly for analog CCD model. N: NTSC / P: PAL
- ⑤ **F** When all the wafers are fully mounted
O With OSD Switch
- ⑥ **2/4P*2** 2P Wafer x 1, 4P Wafer x 2
2/4/6P 2P Wafer x 1, 4P Wafer x 1, 6P Wafer x 1
 * Do not indicate any if it is default/SMT wafer on board

Video Module
Without Lens

Model Naming

With Lens

DCC - I F 490 - 2.8 - F - 2/4P*2
 ① ② ③ ④ ⑤ ⑥ ⑦

- ① **ACC** Analog Output Camera Module
DCC Digital Output Camera Module
- ② **None** "Empty" when there is no Filter at all
B Band-pass(850nM only) Filter
D All-pass(Dummy) Filter
I IR-Cut Filter
K Mechanical TDN ICR with M12 type holder
N IR-pass(Flash + 940nM) Filter
R IR-pass(Flash + 850nM) Filter
- ③ **C** Manual Vari-focal Lens (DC Iris & ICR) standard f=2.8~12mm
F Fixed Board Lens standard f=3.6mm for analog, f=4mm for digital
P Pinhole type Fixed Board Lens standard f=3.7mm
V Manual Vari-focal Lens (DC Iris only) standard f=2.8~12mm
X Manual Vari-focal Lens standard f=2.8~12mm
Y Motorized Zoom Lens (DC Iris only)
Z Motorized Zoom Lens (DC Iris & ICR)
- ④ **490** Module Number
490A With Audio Microphone together
490N/P Mostly for analog CCD model. N: NTSC / P: PAL
- ⑤ **2.8** focal length f=2.8mm
5050 focal length f=5~50mm
 * Do not indicate any if it is a standard focal length
- ⑥ **F** When all the wafers are fully mounted
O With OSD Switch
- ⑦ **2/4P*2** 2P Wafer x 1, 4P Wafer x 2
2/4/6P 2P Wafer x 1, 4P Wafer x 1, 6P Wafer x 1
 * Do not indicate any if it is default/SMT wafer on board

Video Module
With Lens