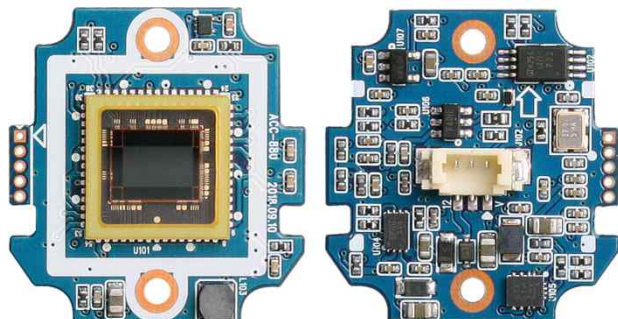


# ACC-880

## CMOS VIDEO MODULE

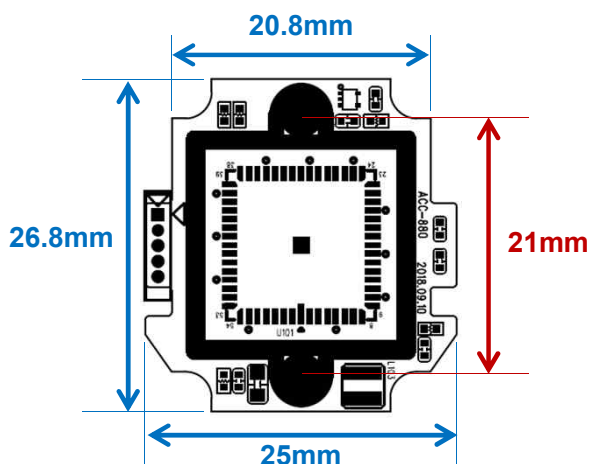


### Main Features

- 1/2.7" 3μm Pixel Progressive Color CMOS Sensor
- 2.07M Pixels – Maximum 1080p (1920x1080p)
- Mountable Lens: Fixed, Pinhole, Manual VF Lens
- 2D-DNR Supported
- Operation Voltage : DC5~15V
- UTC Supported
- AHD2.0 Camera



### Dimension



### Option

- Lens

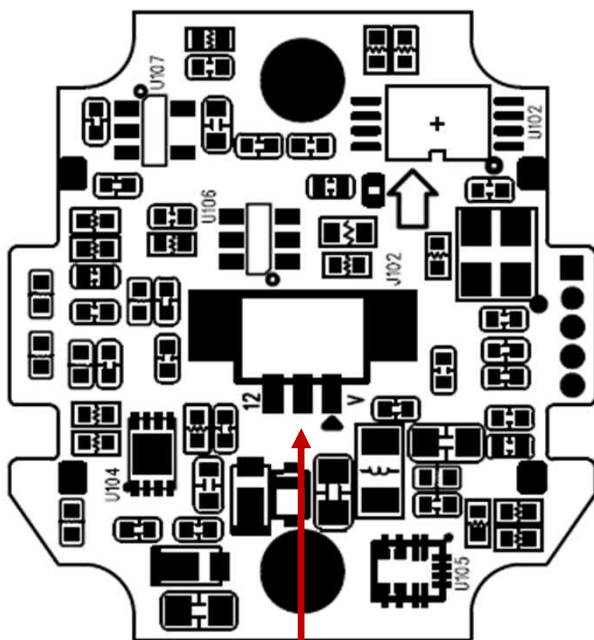
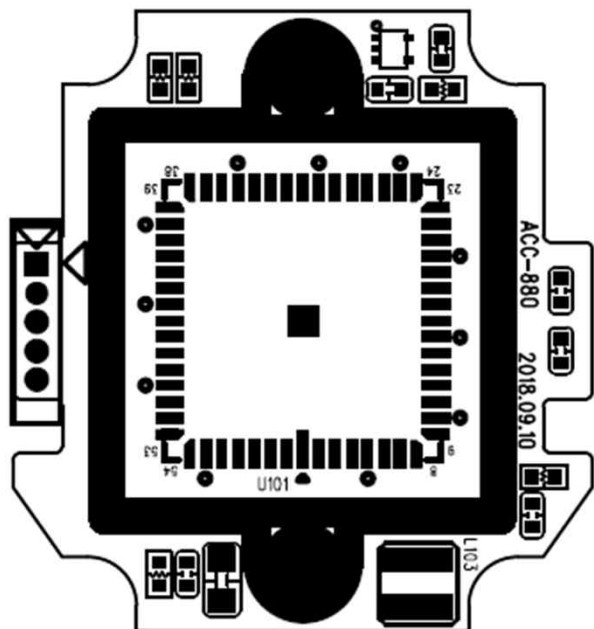
### Specifications

Model	ACC-880
Signal System	AHD 2.0
Pickup Device	1/2.7"(D-6.6mm) 2.07M CMOS Sensor
Scanning System	Progressive Scan (16:9)
Sync. System	Internal
Total Pixels	2.35MP [2040(H)x1154(V)]
Active Pixels	2.07MP [1920(H)x1080(V)]
Min. Illumination	0.5Lux(F2.0 – 30IRE)
Mechanical ICR	N/A
Resolution	1080p@25/30
S/N Ratio	Max. 38.6dB
Video Out (BNC)	AHD: 1080p@25/30 or other Analog HD Formats
Lens	Option
Lens (Mount)	Fixed IRIS Lens Board, Pinhole, VF type – M12
OSD	Via UTC
Exposure	AE
White Balance	AWB
BLC	N/A
Day & Night Mode	Color(Default), Auto, B/W
Gain Control	Auto (Off, Low, Mid, High)
Electronic Shutter	1/50(60) ~ 1/2,000sec
DSS(Sens-up)	N/A
Noise Reduction	2DNR
Mirror	Off(Default), On(H, V, H/V)
Other Features	Lens Shading, Parking Line etc.
Microphone	N/A
Power Source	DC 5~15V
Power Consumption	Less than 0.72 Watts (60mA@DC12V)
Operating Temp.	-10℃ ~ 55℃ (Humidity :0%RH ~ 90%RH)
Size (mm)	Approx. 26.8mm x 25mm (1-board)
Weight	7 g (Including Lens Holder(7.3T), Without OLPF)

# ACC-880

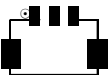
## CMOS VIDEO MODULE

### Pin Connections



J102

### J102



No.	Pin Item	No.	Pin Item
1	VIDEO	2	GND
3	DC5~15V		

Wafer SDM Type: **1.25mm pitch – 3 pin / SMD**  
Manufacturer: **YEONHO**  
MFG Part Number: **12505WS-03B**

SETUP MENU	SUB MENU 1	SUB MENU 2	VALUE
EXPOSURE	AGC		OFF / LOW / MID / HIGH
	TARGET LEVEL		0 ~ 255
	SHTTER SPEED		AUTO, 1/50, 1/60, 1/100, 1/120, 1/250, 1/350, 1/500, 1/1000, 1/2000
AWB	COLOR GAIN	R GAIN	0 ~ 255
		B GAIN	0 ~ 255
IMAGE ENHANCE	BNR / BRIGHTNESS / CONTRAST / SHARPNESS / 2DNR / COLOR GAIN	REF	0 ~ 5
		VALUE	0 ~ 255
		DAY START	0 ~ 255
		DAY END	0 ~ 255
		DAY VALUE	0 ~ 255
		NIGHT START	0 ~ 255
		NIGHT END	0 ~ 255
		NIGHT VALUE	0 ~ 255
	COLOR SAT	MAG	0 ~ 255
		RED	0 ~ 255
		YEL	0 ~ 255
		GRE	0 ~ 255
		CYA	0 ~ 255
		BLU	0 ~ 255
FUNC	DAY & NIGHT	MODE	AUTO, BW, COLOR
		AUTO D>>N	0 ~ 255
		AUTO N>>D	0 ~ 255
	MIRROR FLIP		H, V, H/V
	PARKING GUIDE		OFF / ON
	LSC		OFF / ON
	SENSOR INFO		OFF / ON
SYSTEM	F/W VERSION		(Read Only)
	VIDEO	FORMAT	HD A, HD C, HD T
		FPS	PAL, NTSC
EXIT	EXIT WITHOUT SAVE		
	SAVE AND EXIT		
	FACTORY DEFAULT		