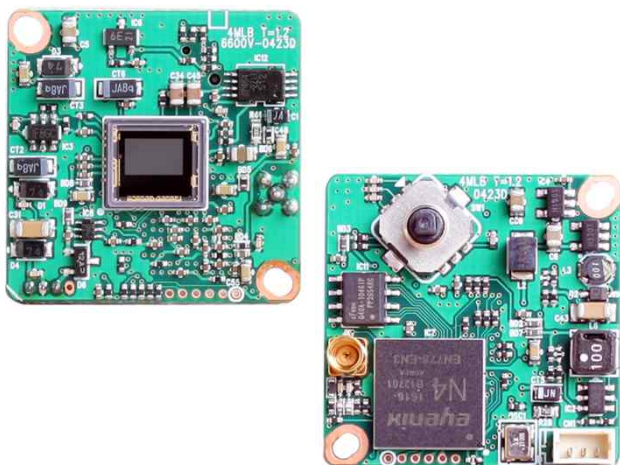
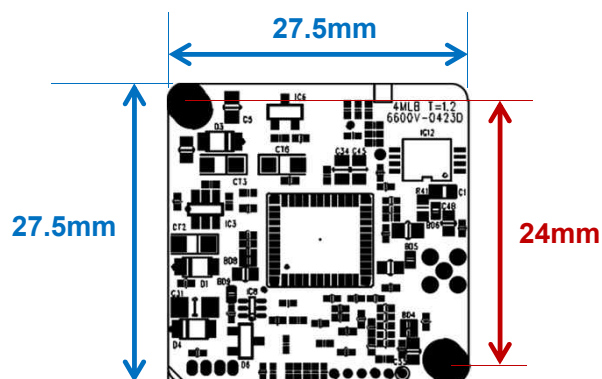


# DCC-460

## CMOS VIDEO MODULE



### Dimension



### Option

- Lens

### Main Features

- 1/3" 2.12M(1080P) Panasonic CMOS Image Sensor
- 2Mega Pixels (1080P25/30, 720P25/30/50/60)
- Mountable Lens: Fixed & Pinhole Lens with Miniature Housing
- WDR / 3D-NR / DSS(Sens-up) Supported
- OSD Available
- HD-SDI Video Out Supporting standard SMPTE protocol
- EX-SDI Vide Out Supported
- Analog Composite Video Out
- CMOS HD-SDI Video Module (27.5x27.5 1-board)



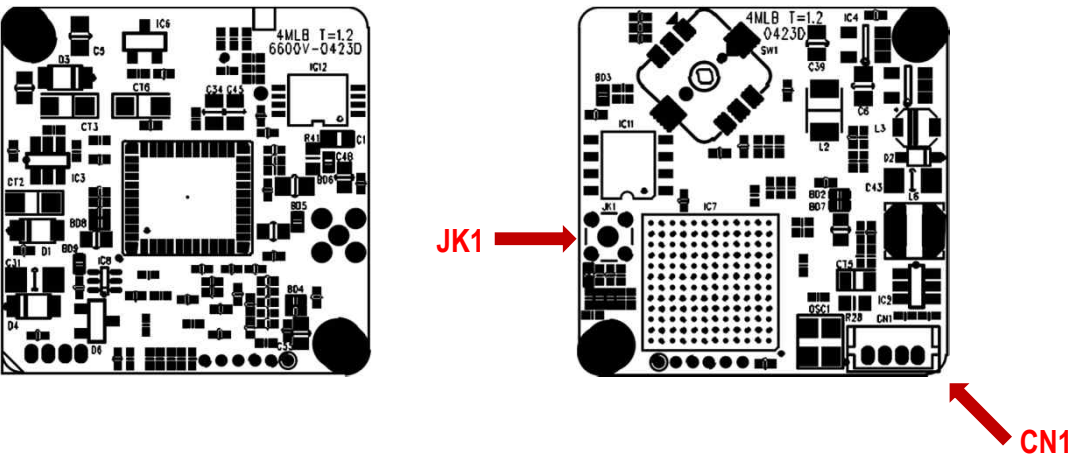
### Specifications

Model	DCC-460
Signal System	HD-SDI (Serial Data Interface) or EX-SDI
Pickup Device	<b>1/3"(D-6mm) 2.12M Panasonic CMOS Sensor</b>
Scanning System	Progressive Scan (16:9)
Sync. System	Internal
Total Pixels	2.22M [2010(H)x1108(V)]
Effective Pixels	2.12M [1944(H)x1092(V)]
Scanning Frequency	30Hz(VD) for NTSC out   25Hz(VD) for PAL out
Min. Illumination	<b>0.06Lux(F2.5 – 30IRE), 0.002(DSS on)</b>
Mechanical ICR	N/A
H-Resolution	<b>More than 1,000TV Lines(H)</b>
S/N Ratio	More than 50dB (AGC off)
Video Out 1	<b>HD-SDI or EX-SDI: 1080p@25/30, 720p@25/30/50/60</b> From HD-SDI to EX-SDI: Left + Left + Left + Enter From EX-SDI to HD-SDI: Right + Right + Right + Enter
Video Out 2	Composite Video 1V p.p (NTSC/PAL - 75Ω)
Lens	Option
Lens (Mount)	<b>Fixed Iris Lens (Board, Pinhole, Manual VF)</b> Via Miniature Case (M12)
OSD	Option: Built-in OSD Switch or AD type OSD Key
Camera Title	Off, On(Max. 10 Characters)
Language	English, Chinese(Simplified), Chinese(Traditional), Japanese, Korean
Exposure	AE, Manual
White Balance	AWB, ATW, Push Lock, Manual
BLC	Off, HLC, BLC, WDR * WDR is not operated when manual shutter mode or CVBS output mode is selected.
Day & Night Mode	AUTO, COLOR, B/W, EXT
Gain Control	AGC (0~20)
Electronic Shutter	1/25(30)~1/30,000sec
Noise Reduction	<b>3DNR (Off, Low, Middle, High)</b>
DSS(Sens-up)	<b>X32</b>
Mirror	Off, On(Mirror, Flip)
Other Features	Motion Detection (4 Zones), Privacy Mask (16 Zones), Flickerless, Lens Shading, Gamma, D-zoom, Defog etc.
Power Source	DC12V
Power Consumption	Less than 1.5 Watts (120mA)
Operating Temp.	-10℃ ~ 55℃ (Humidity :0%RH ~ 90%RH)
Size (mm)	27.5(W) x 27.5(D) – 1 board
Weight	4 g (without OLPF)

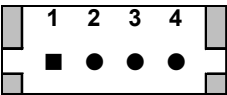
# DCC-460

## CMOS VIDEO MODULE

### Pin Connections



### CN1 – Power & CVBS



No.	Pin Item	No.	Pin Item
1	AD KEY	2	CVBS
3	GND	4	DC12V

Wafer DIP type: **1.25mm pitch – 3/4 pin**  
Manufacturer: **Yeonho / Molex**  
MFG Part Number: **12512WS-03B / 53047-0410**

### JK1 – HD-SDI Out - MMCX

SETUP MENU	SUB MENU1	SUB MENU2	SUB MENU3	VALUE
LENS	DC			INDOOR/OUTDOOR/DEBLUR
	MANUAL			NORMAL/DEBLUR
EXPOSURE	BRIGHTNESS			0 ~ 20
	AGC			0 ~ 20
	SHUTTER MODE			AUTO/ MANUAL/FLICKERLESS
	SHUTTER SPEED			1/30(25),60(50),120(100),250,700,1K,1.6K,2.5K,5K,7K,10K,30K
	SENS-UP			OFF/ X2/ X4/ X8 / X16 / X32
WHITE BALANCE	AWB			
	ATW			
	PUSH LOCK			Press ENTER key
	MANUAL	COLOR TEMP.		3000K/ 5000K/ 8000K
		R-GAIN		0 ~ 20
		B-GAIN		0 ~ 20
BACKLIGHT	OFF			
	HLC	LEVEL		0 ~ 20
		COLOR		BLK,WHT,YEL,CYN,GRN,MAG,RED,BLU
	BLC	H-POS		0 ~ 20
		V-POS		0 ~ 20
		H-SIZE		0 ~ 20
		V-SIZE		0 ~ 20
	WDR	WEIGHT		LOW/ MIDDLE/ HIGH
DNR				OFF/ LOW/ MIDDLE/ HIGH
DAY&NIGHT	AUTO	DWELL TIME		0 ~ 9sec, 1sec/step
		AGC THRES		0(bright) ~ 20(dark)
		AGC MARGIN		0(bright) ~ 20(dark)
	COLOR			
	B&W			
	EXTERN / CDS	DWELL TIME		0 ~ 9sec, 1sec/step
		D->N LEVEL		0(bright) ~ 20(dark)
		N->D LEVEL		0(bright) ~ 20(dark)
		SMART IR		OFF/ON
		LEVEL		0 ~ 20
		CDS POLARITY		LOW/HIGH
IMAGE	SHARPNESS			0 ~ 20
	COLOR LEVEL			0 ~ 20
	MIRROR			OFF/ ON
	FLIP			OFF/ ON
	LENS SHADING	OFF/ ON		WEIGHT 0~100%
	GAMMA			0.45/ 0.55/ 0.65/ 0.75
	D-ZOOM			1~16X
	ACE	OFF		
		MODE		ALWAYS/ NIGHT ONLY
		LEVEL		LOW/ MIDDLE/ HIGH
	DEFOG	AUTO/ MANUAL		LOW/ MIDDLE/ HIGH

SETUP MENU	SUB MENU1	SUB MENU2	SUB MENU3	VALUE
<b>SPECIAL</b>	COMM. ADJUST	CAM ID		0 ~ 255
		BAUDRATE		2400,4800,9600,19200,38400,57600,115200
		PROTOCOL		PELCO-D
	PRIVACY	BOX	OFF	
			MASK SEL	0 ~ 15
			MASK MODE	OFF/ ON
			H-POS	0 ~ 60
			V-POS	0 ~ 34
			H-SIZE	0 ~ 40
			V-SIZE	0 ~ 34
			Y LEVEL	0 ~ 20
			CB LEVEL	0 ~ 20
			CR LEVEL	0 ~ 20
			TRANS	0 ~ 3
		POLYGON	OFF	
			MASK SEL	0 ~ 7
			MASK MODE	OFF/ ON
			POS0-X ~ POS3-X	0 ~ 120
			POS0-Y ~ POS3-Y	0 ~ 68
			Y LEVEL	0 ~ 20
			CB LEVEL	0 ~ 20
			CR LEVEL	0 ~ 20
			TRANS	0 ~ 3
	MOTION	OFF		
		DET WINDOW	WINDOW SEL	0 ~ 3
			WINDOW MODE	OFF/ ON
			DET H-POS	0 ~ 60
			DET V-POS	0 ~ 34
			DET H-SIZE	0 ~ 60
			DET V-SIZE	0 ~ 34
		SENSITIVITY		0 ~ 10
		MOTION OSD		OFF/ON
		TEXT ALARM		OFF/ ON
		SIGNAL OUT		OFF/ ON
<b>SYSTEM</b>	SDI OUT			HD-SDI/ EX-SDI
	SDI FORMAT			1080_30p/ 1080_25p/ 720_30p/ 720_25p/ 720_60p/ 720_50p
	FREQ(NT/PAL)			60Hz(NTSC)/ 50Hz(PAL)
	CVBS OUT			OFF/ ON
	LANGUAGE			ENG/ CHINESE/ CHINESE(S)/ JAPANESE/ KOR
	CAM TITLE			0 ~ 9, A ~ Z, blank
<b>FACTORY DEFAULT</b>				Reset to factory setting
<b>RETURN</b>				Return to previous menu
<b>EXIT</b>				Exit SETUP menu