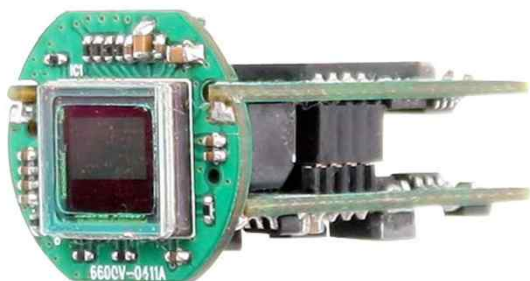


DCC-4860

CMOS VIDEO MODULE

PARANTEK



Main Features

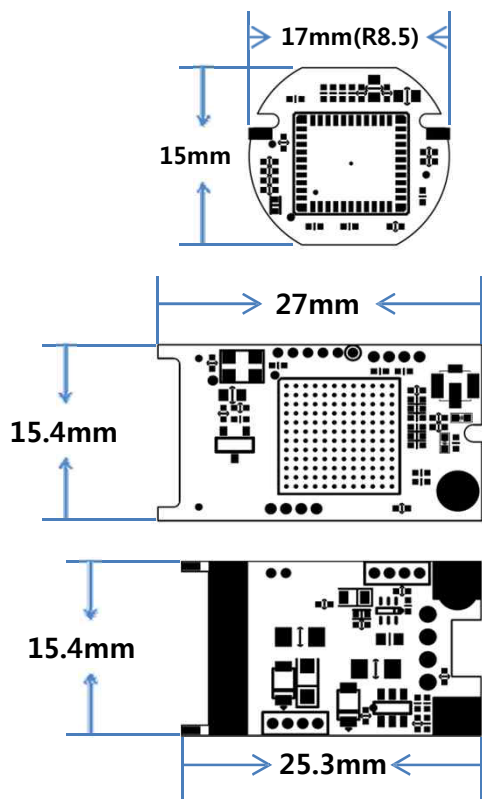
- 1/3" 2.12M(1080P) Panasonic CMOS Image Sensor
- 2Mega Pixels (1080i/P50/60, 1080p25/30, 720P25/30,50/60)
- Mountable Lens: Fixed/Pinhole Lens (via Housing Lens Holder)
- WDR / 3D-NR / DSS(Sens-up) Supported
- OSD Available (Option - OSD Cable)
- HD-SDI Video Out Supporting standard SMPTE protocol
- EX-SDI Vide Out Supported
- Analog Composite Video Out
- CMOS HD-SDI Video Module (17Ø and etc 3-boards)



Specifications

| Model | DCC-4860 |
|--------------------|--|
| Signal System | HD-SDI (Serial Data Interface) or EX-SDI |
| Pickup Device | 1/3"(D-6mm) 2.12M Panasonic CMOS Sensor |
| Scanning System | Progressive Scan (16:9) |
| Sync. System | Internal |
| Total Pixels | 2.22M [2010(H)x1108(V)] |
| Effective Pixels | 2.12M [1944(H)x1092(V)] |
| Scanning Frequency | 30Hz(VD) for NTSC out 25Hz(VD) for PAL out |
| Min. Illumination | 0.06Lux(F2.5 – 30IRE), 0.002(DSS on) |
| Mechanical ICR | N/A |
| H-Resolution | More than 1,000TV Lines(H) |
| S/N Ratio | More than 50dB (AGC off) |
| Video Out 1 | HD-SDI or EX-SDI: 1080i/p@50,60, 1080p@25/40, 720p@25/30/50/60 From HD-SDI to EX-SDI: Left + Left + Left + Enter From EX-SDI to HD-SDI: Right + Right + Right + Enter |
| Video Out 2 | Composite Video 1V p.p (NTSC/PAL - 75Ω) |
| Lens | Fixed Iris Lens |
| Lens (Mount) | N/A |
| OSD | AD type OSD Cable (Option) |
| Camera Title | Off, On(Max. 10 Characters) |
| Language | English, Chinese(Simplified), Chinese(Traditional), Japanese, Korean |
| Exposure | AE, Manual |
| White Balance | AWB, ATW, Push Lock, Manual |
| BLC | Off, HLC, BLC, WDR * WDR is not operated when manual shutter mode or CVBS output mode is selected. |
| Day & Night Mode | AUTO, COLOR, B/W |
| Gain Control | AGC (0~20) |
| Electronic Shutter | 1/25(30)~1/30,000sec |
| Noise Reduction | 3DNR (Off, Low, Middle, High) |
| DSS(Sens-up) | X32 |
| Mirror | Off, On(Mirror, Flip) |
| Other Features | Motion Detection (4 Zones), Privacy Mask (16 Zones), Flickerless, Lens Shading, Gamma, D-zoom, Defog etc. |
| Power Source | DC12V |
| Power Consumption | Less than 2.4 Watts (200mA) |
| Operating Temp. | -10℃ ~ 55℃ (Humidity :0%RH ~ 90%RH) |
| Size (mm) | 17Ø and etc. 3-Boards |
| Weight | 5 g (Including OLPF) |

Dimension



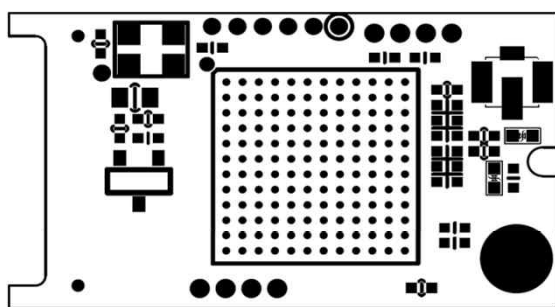
Option

- OSD Cable

DCC-4860

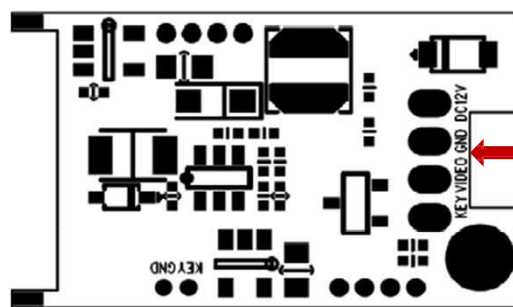
CMOS VIDEO MODULE

Pin Connections



DSP Board (TOP)

JK1



Power Board (BOTTOM)

Conn.

JK1 – HD-SDI Out - MHF

MHF SMD Connector
Part Name: 20279-001E-01
Mfg.: I-Pex

Conn. – Hand Soldering Work

- DC12V (Power Input – DC12V)
- GND (Ground)
- Video (Analog Service Video Out)
- Key (OSD AD Key port)