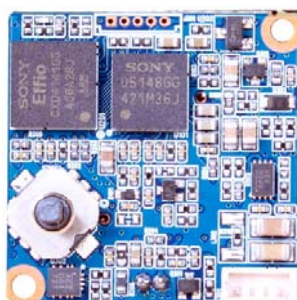
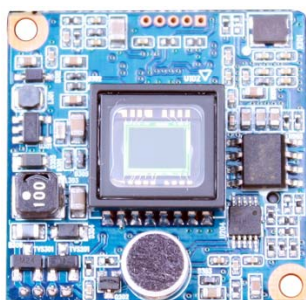


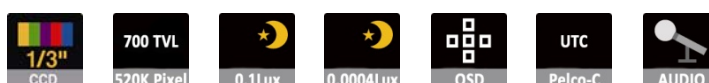
# ACC-390

## CCD VIDEO MODULE



### Main Features

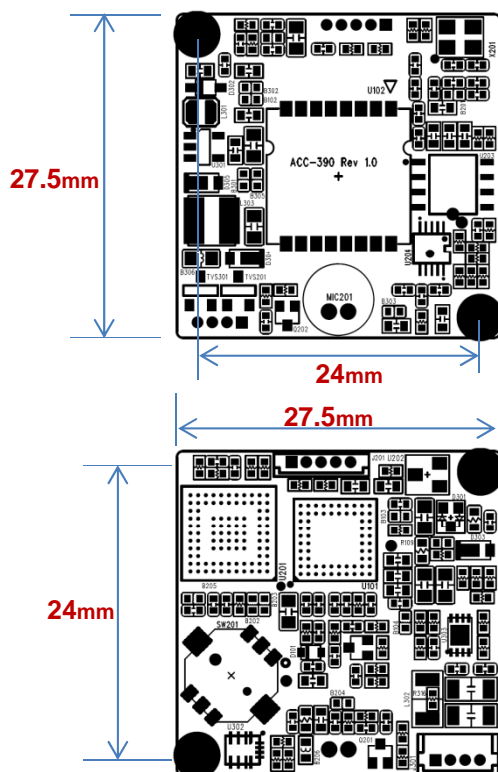
- 1/3" 960H Sony Double Scan Super HAD CCD II
- 520K Pixels (700 TV Lines)
- Mountable Lens: Fixed, Pinhole, Manual Vari-focal Lens (Case lens holder)
- Audio (ACC-390A)
- Built-in OSD Switch
- WDR(Effio-V) / 3D-DNR / DSS (Sens-up)
- UTC(Pelco-C 32bits) Built-in
- Wide Voltage Range for Operation: DC5~12V
- CCD Video Module (28x28 type)



### Specifications

Model	ACC-390N / ACC-390AN	ACC-390P / ACC-390AP
Signal System	NTSC	PAL
Pickup Device	<b>1/3"(D-6mm) 960H SONY Double Scan Super HAD CCD II</b>	
Scanning System	2:1 Interlace	
Sync. System	Internal	
Total Pixels	520K [1020(H)x508(V)]	610K [1020(H)x596(V)]
Effective Pixels	480K [976(H)x494(V)]	570K [976(H)x582(V)]
Scanning Frequency	59.94Hz(VD)	50Hz(VD)
Min. Illumination	<b>0.1Lux(Day), 0.0004Lux(DSS on)</b>	
H-Resolution	<b>700TV Lines(H)</b>	
S/N Ratio	More than 50dB (AGC off)	
Lens	Option	
Lens (Mount)	Board Mount(M12), VF Mount(Ø14), CS Mount	
OSD	via 5-direction Tact-switch	
Camera Title	Off, On(Max. 52 Characters)	
Language	English, Japanese, Russian, French, Spanish, Portuguese, German	
Exposure	Manual	
Scene Select	Full Auto, Indoor, Outdoor, Back Light, ITS, Custom	
White Balance	ATW / Custom mode only (ATW, Push, User1, User2, Manual, Push Lock)	
HLC / BLC	Off, HLC / Custom mode only(BLC)	
Day & Night Mode	AUTO, Day, Night	
Gain Control	AGC (6, 12, 18, 24, 30, 36, 42, 44.8dB)	
Electronic Shutter	1/60~1/10,000sec	1/50~1/10,000sec
WDR / ATR-EX	<b>Auto / Custom mode only (off, WDR, ATR-EX)</b>	
DSS (Sens-up)	<b>Off, Auto / Manual mode only (Max. x256)</b>	
Noise Reduction	<b>SMART 3D-DNR (0 ~ 6)</b>	
Mirror	Off, On(H, V, HV)	
Other Features	Motion(4 Zones), Privacy(15 Zones), Defog, Ezoom, DIS, Flickerless, Lens Shading, Anti-CR	
Signal Output	1.0 Vp-p Composite (75Ω)	
Power Source	<b>DC5~12V</b>	
Power Consumption	Less than 1.2Watts (100mA@DC12V)	
Operating Temp.	-10℃ ~ 55℃ (Humidity :0%RH ~ 90%RH)	
Size (mm)	<b>28x28 1-board</b>	
Weight	5.5 g (Including OLPF)	

### Dimension



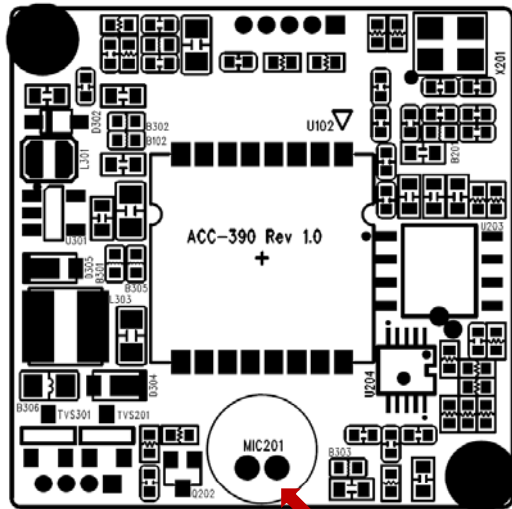
### Option

- Audio (ACC-390A)

# ACC-390

## CCD VIDEO MODULE

### Pin Connections

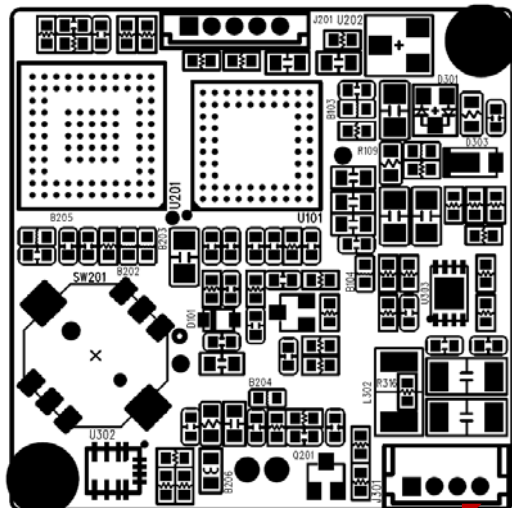


MIC201

### MIC 201 - Audio

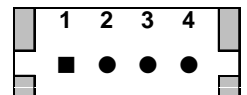


No.	Pin Item	No.	Pin Item
1	MIC IN / GND	2	GND / MIC IN

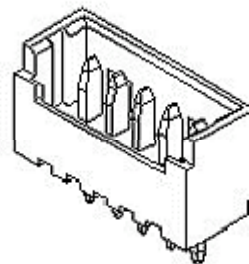


J301

### J301



No.	Pin Item	No.	Pin Item
1	AUDIO OUT	2	VIDEO
3	GND	4	VCC (DC5~12V)



Wafer DIP type: 1.25mm pitch – 4 pin  
 Manufacturer: **Molex**  
 MFG Part Number: **53047-0410**