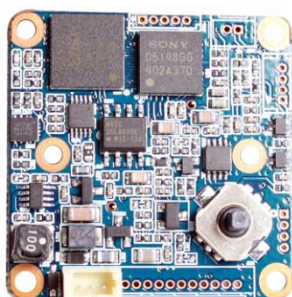
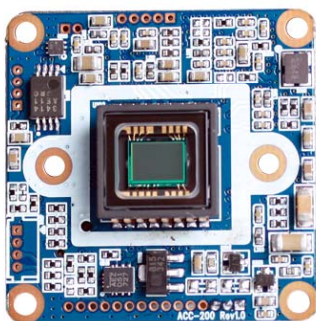


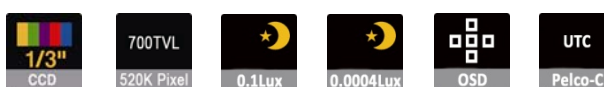
# ACC-200

## CCD VIDEO MODULE



### Main Features

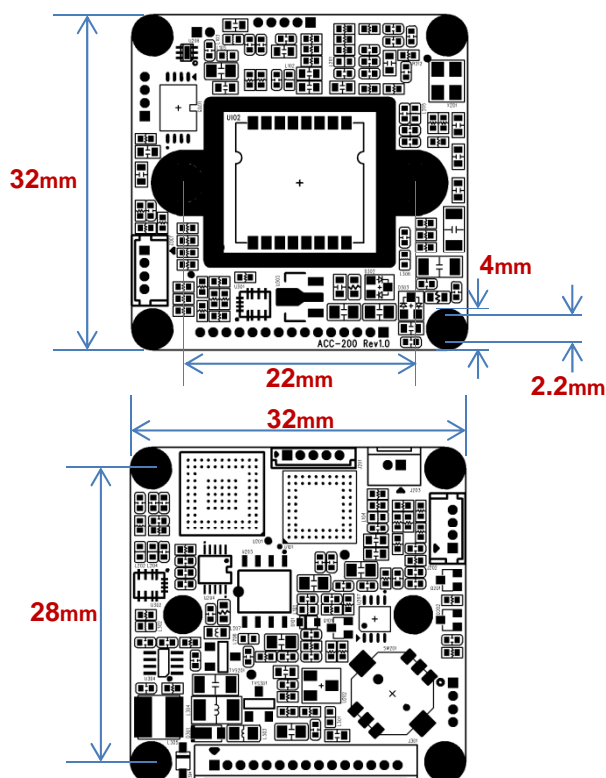
- 1/3" 960H Sony Double Scan Super HAD CCD II
- 520K Pixels (700 TV Lines)
- Mountable Lens: Fixed, Pinhole, Manual VF, DC Auto Vari-focal, ICR Vari-focal Lens
- Built-in OSD Switch
- WDR(Effio-V) / 3D-DNR / DSS (Sens-up)
- UTC(Pelco-C 32bits) Built-in
- CCD Video Module (32x32mm PCB 1-board)



### Specifications

Model	ACC-200N	ACC-200P
Signal System	NTSC	PAL
Pickup Device	1/3"(D-6mm) 960H SONY Double Scan Super HAD CCD II	
Scanning System	2:1 Interlace	
Sync. System	Internal	
Total Pixels	520K [1020(H)x508(V)]	610K [1020(H)x596(V)]
Effective Pixels	480K [976(H)x494(V)]	570K [976(H)x582(V)]
Scanning Frequency	59.94Hz(VD)	50Hz(VD)
Min. Illumination	0.2Lux, 0.1Lux(Night with ICR), 0.0004Lux(DSS on)	
Mechanical ICR	Available (Option)	
H-Resolution	700TV Lines(H)	
S/N Ratio	More than 50dB (AGC off)	
Lens	DC Auto & Fixed Iris Lens	
Lens (Mount)	Board (M12), VF (Ø14) and CS type – Lens Holder	
OSD	via 5-direction On-board Tact-switch, GPIO Port, UTC	
Camera Title	Off, On(Max. 52 Characters)	
Language	English, Japanese, Russian, French, Spanish, Portuguese, German	
Exposure	DC, Manual	
Scene Select	Full Auto, Indoor, Outdoor, Back Light, ITS, Custom	
White Balance	ATW / Custom mode only (ATW, Push, User1, User2, Manual, Push Lock)	
HLC / BLC	Off, HLC / Custom mode only(BLC)	
Day & Night Mode	AUTO, Day, Night	
Gain Control	AGC (6, 12, 18, 24, 30, 36, 42, 44.8dB)	
Electronic Shutter	1/60~1/10,000sec	1/50~1/10,000sec
WDR / ATR-EX	Auto / Custom mode only (off, WDR, ATR-EX)	
DSS (Sens-up)	Off, Auto / Manual mode only (Max. x256)	
Noise Reduction	SMART 3D-DNR (0 ~ 6)	
Mirror	Off, On(H, V, HV)	
Other Features	Motion(4 Zones), Privacy(15 Zones), Defog, Ezoom, DIS, Flickerless, Lens Shading, Anti-CR	
Microphone	N/A	
Signal Output	1.0 Vp-p Composite (75Ω)	
Power Source	DC12V	
Power Consumption	Less than 1.5Watts (110mA@DC12V)	
Operating Temp.	-10℃ ~ 55℃ (Humidity :0%RH ~ 90%RH)	
Size (mm)	32x32 1-board	
Weight	7 g (Including OLPF)	

### Dimension



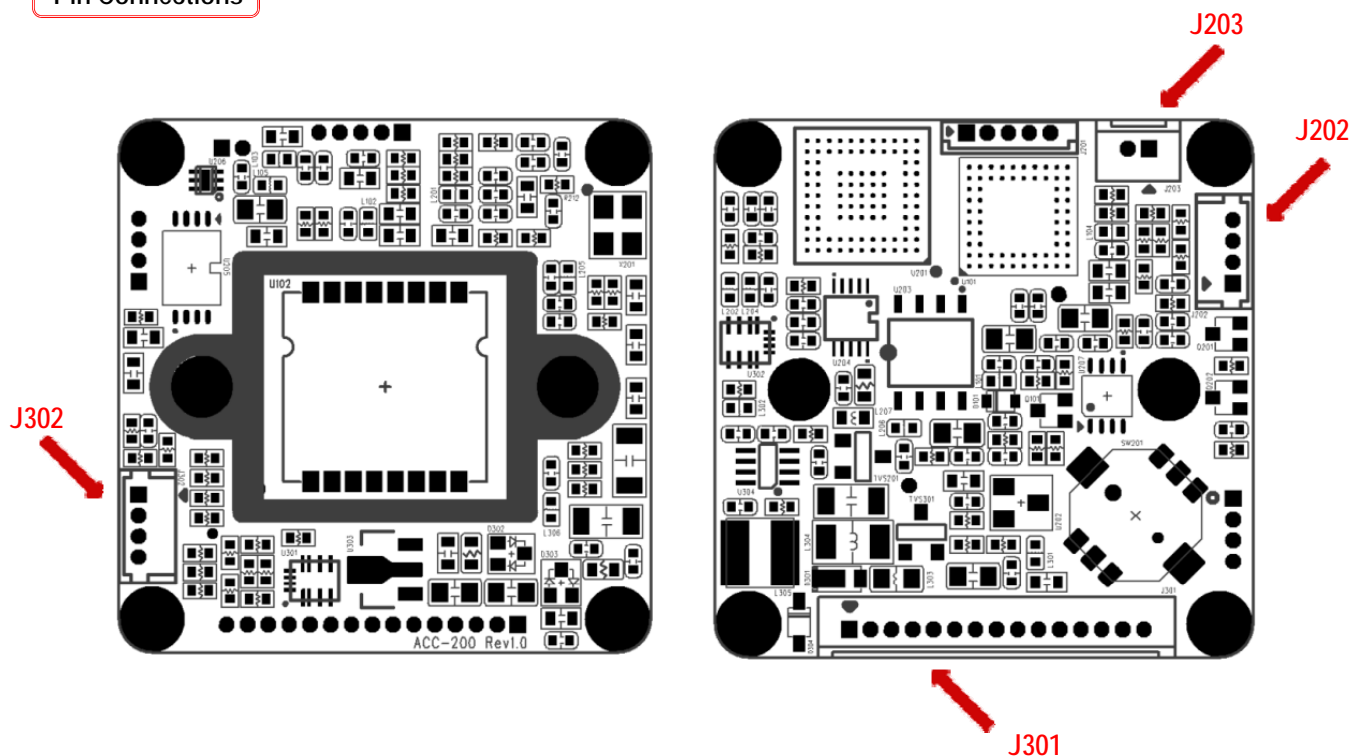
### Option

- Mechanical TDN ICR
- UTC Controller

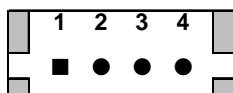
# ACC-200

## CCD VIDEO MODULE

### Pin Connections

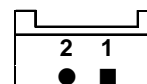


#### J302 – IR CTL



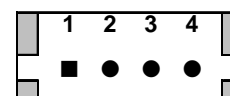
No.	Pin Item	No.	Pin Item
1	DC 12V	3	EXT D&N (CDS IN)
2	GND	4	D&N OUT

#### J203 – TDN ICR



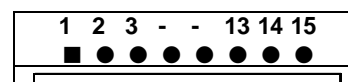
No.	Pin Item	No.	Pin Item
1	ICR (+)	2	ICR (-)

#### J202 – DC IRIS



No.	Pin Item	No.	Pin Item
1	DMP+	3	DRV+
2	DMP-	4	GND

#### J301 – Multi-ports



No.	Pin Item	No.	Pin Item
1	CVBS	9	OSD KEY LEFT
2	GND	10	OSD KEY SET
3	DC12V	11	MD OUT
4	GND	12	EXT 3.3V
5	2ND CVBS	13	RS485 TTL 3.3V TXD
6	OSD KEY DOWN	14	RS485 TTL 3.3V RXD
7	OSD KEY UP	15	RS485 DRV
8	OSD KEY RIGHT		