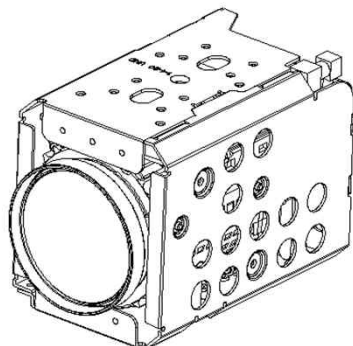
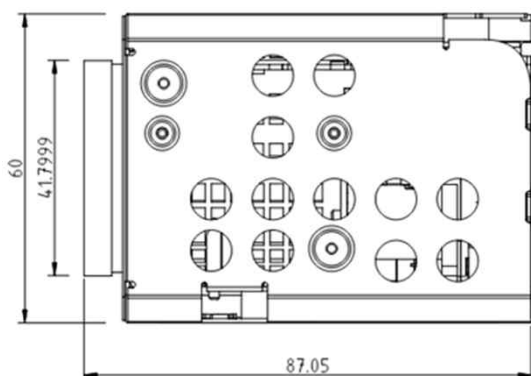
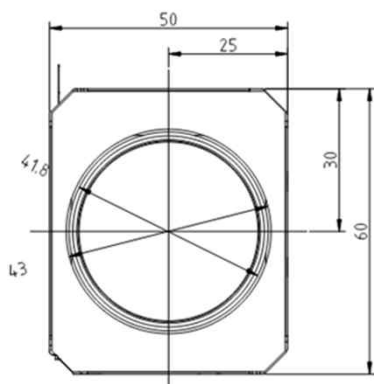


DCC-Z2021

CMOS VIDEO ZOOM MODULE



Dimension



Main Features

- 1/2.86" Panasonic 2.75μm Color CMOS Image Sensor
- 2Mega Pixels – Maximum Full-HD(1920x1080p)
- Built-in Auto Focus Zoom Lens: 20x Optical (f=4.7~94mm)
- Built-in IR-Cut(650nm) OLPF
- WDR, DSS, 3D-NR Supported
- 1080p Digital Video(BT.1120) Out or SDI(Optional)
- Sony Visca, Pelco-D/P Protocol Compatible



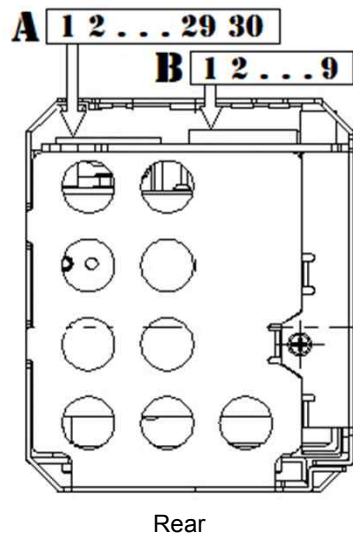
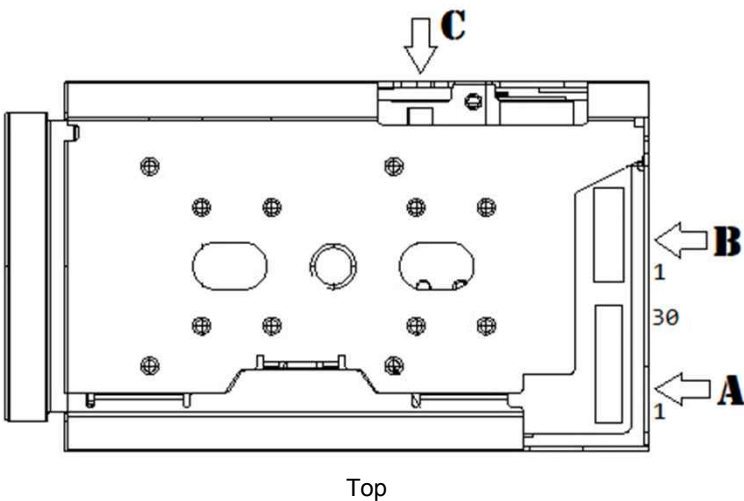
Specifications

Model	DCC-Z2021
Pickup Device	1/2.86"(D-6.3mm) 2.35M Panasonic CMOS Sensor
Scanning System	Progressive Scan (16:9)
Sync. System	Internal
Total Pixels	2.55M [1981(H)x1288(V)]
Effective Pixels	2.35M [1944(H)x1212(V)]
Min. Illumination	0.1Lux(Color), 0.05Lux(B/W), 0.003Lux(With DSS on)
Mechanical ICR	Built-in
Video Out (LVDS)	BT.1120 1080p@25/30/50/60, 1080i@50/60, 720p@25/30/50/60 (0.4mm pitch 30pin Micro-coaxial Connector)
Video Out (SDI)	HD-SDI or EX-SDI SMPTE 292M(1.5Gbps) 1080p@25/30, 1080i@50/60, 720p@25/30/50/60 SMPTE 424M(3Gbps) : 1080p@50/60 Option: 1080i/p & 720p @59.94, 1080p & 720p@29.97
Lens	20x Optical Zoom (f=4.7~94mm, F1.6~F3.5) 12x Digital Zoom = Max. 240x
OSD	Via UART
Camera Title	Off, On(Max. 10 Characters)
Language	English, Russian, French, Spanish, Portuguese, German, Chinese(Simplified)
Exposure	Auto, Manual, Bright, Shutter, IRIS
White Balance	AWB, ATW, Push, Indoor, Outdoor, Manual
BLC	Off, WDR/BLC, ACE, ECLIPSE
Day & Night Mode	AUTO, COLOR, B/W, EXT
Gain Control	AGC (0~20)
Electronic Shutter	1/25(30)~1/40,000sec
Noise Reduction	3DNR (Off, Low, Middle, High)
DSS(Sens-up)	X30
Mirror	Off, On(Mirror, Flip)
Other Features	Motion Detection (4 Zones), Privacy Mask (8 Zones), Flickerless, Lens Shading, Gamma, DIS, Defog etc.
Communication	RS232C-TTL 3.3~5V / Default: 9600bps (Sony Visca, Pelco-D/P)
No. of Camera ID	Up to 255
Power Source	DC9V ~ 15V
Power Consumption	Less than 3.9 Watts (320mA)
Operating Temp.	-10℃ ~ 55℃ (Humidity :0%RH ~ 90%RH)
Size (mm)	50(W) x 60(H) x 87(D)
Weight	235 g

DCC-Z2021

CMOS VIDEO ZOOM MODULE

Pin Connections



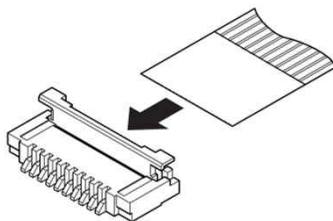
B – UART & Power

No.	Pin Item	No.	Pin Item
1	RXD (UART 5V IN)	6	CVBS Output
2	TXD (UART 5V OUT)	7	GND
3	GND	8	KEY Input
4	DC Input (9~15V)	9	N.C
5	GND		

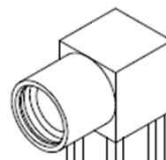
Wafer SMD type: **1.0mm pitch – 9 pin**

Manufacturer: **Kyocera**

MFG Part Number: **00-6200-509-130-000+**



C – MMXC (for SDI)



A – LVDS & Etc.

No.	Pin Item	No.	Pin Item	No.	Pin Item	No.	Pin Item
1	TXOUT3+ (LVDS)	9	TXOUT0+ (LVDS)	17	DC IN	25	CVBS Output (Optional)
2	TXOUT3- (LVDS)	10	TXOUT0- (LVDS)	18	DC IN	26	EXT. Reset: N/O(3.3V)
3	TXCLKOUT+ (LVDS)	11	GND	19	KEY Input	27	TXOUT5+ (LVDS)
4	TXCLKOUT- (LVDS)	12	TXD (5V)	20	GND	28	TXOUT5- (LVDS)
5	TXOUT2+ (LVDS)	13	RXD (5V)	21	TXOUT7+ (LVDS)	29	TXOUT4+ (LVDS)
6	TXOUT2- (LVDS)	14	DC IN	22	TXOUT7- (LVDS)	30	TXOUT4- (LVDS)
7	TXOUT1+ (LVDS)	15	DC IN	23	TXOUT6+ (LVDS)		
8	TXOUT1- (LVDS)	16	DC IN	24	TXOUT6- (LVDS)		

SMD type: **0.4mm pitch – 30 pin**

Manufacturer: **KEL**

MFG Part Number: **USL20-30S**

