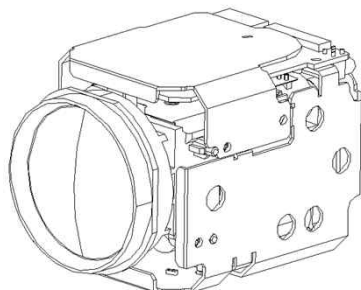


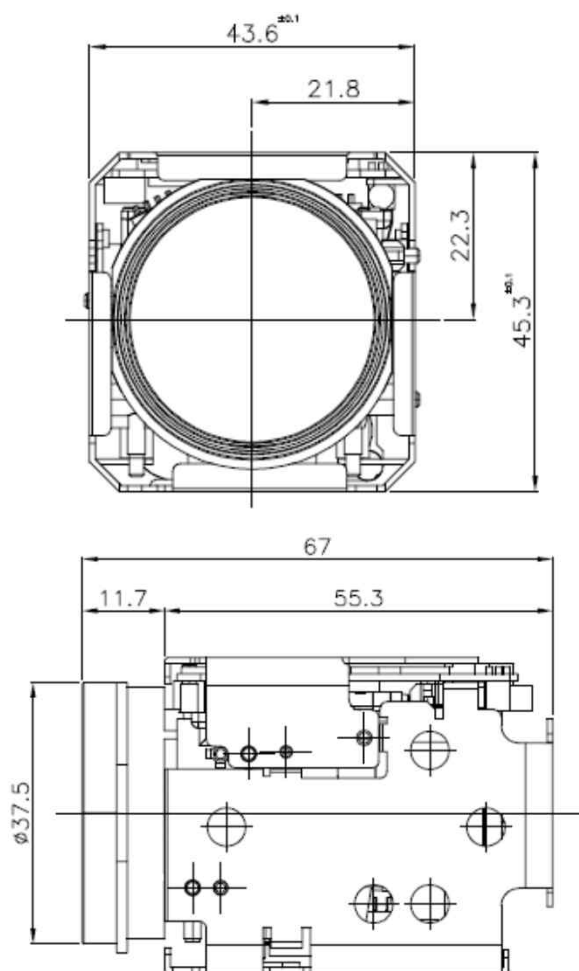
# DCC-Z1022

## CMOS VIDEO ZOOM MODULE

PARANTEK



### Dimension



### Main Features

- 1/2.8" Sony 2.9 $\mu$ m Color CMOS Image Sensor
- 2.1Mega Pixels – Maximum Full-HD(1920x1080p)
- Built-in Auto Focus Zoom Lens: 10x Optical (f=4.7~47mm)
- Built-in IR-Cut(650nm) OLPF
- WDR, DSS, 3D-NR Supported
- 1080p Digital Video(LVDS) Out or SDI(Optional)
- Sony Visca, Pelco-D/P Protocol Compatible



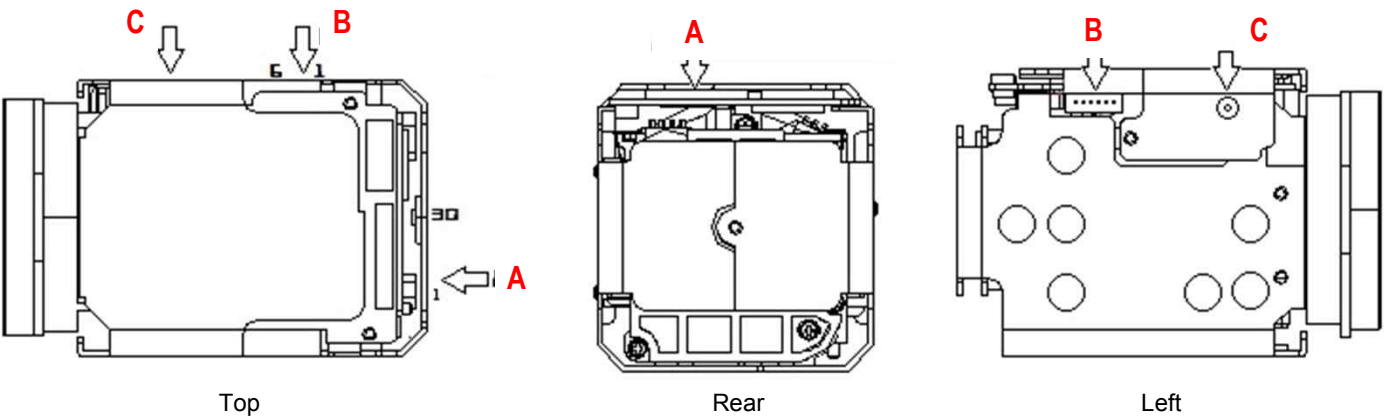
### Specifications

Model	DCC-Z1022
Pickup Device	1/2.8"(D-6.4mm) 2.13M Sony Starvis CMOS Sensor
Scanning System	Progressive Scan (16:9)
Sync. System	Internal
Total Pixels	2.16M [1945(H)x1109(V)]
Effective Pixels	2.13M [1945(H)x1097(V)]
Min. Illumination	0.06Lux(25/30p), 0.03Lux (ICR on), 0.004Lux (DSS on) 0.1Lux(50/60p), 0.05lux (ICR on), 0.006Lux (DSS on)
Mechanical ICR	Built-in
Video Out (LVDS)	BT.1120 1080p@25/30/50/60, 1080i@50/60, 720p@25/30/50/60 (0.4mm pitch 30pin Micro-coaxial Connector)
Video Out (SDI)	HD-SDI SMPTE 292M(1.5Gbps) 1080p@25/30, 1080i@50/60, 720p@25/30/50/60 SMPTE 424M(3Gbps) : 1080p@50/60 Option: 1080i/p & 720p @59.94, 1080p & 720p@29.97
Lens	10x Optical Zoom (f=4.7~47mm, F1.6~F3.0) 12x Digital Zoom = Max. 120x
OSD	Via UART
Camera Title	Off, On(Max. 10 Characters)
Language	English, Russian, French, Spanish, Portuguese, German, Chinese(Simplified)
Exposure	Auto, Manual
White Balance	Auto, ATW, Manual
BLC	Off, WDR/BLC, HLC
Day & Night Mode	Auto, Day, Night
Gain Control	AGC (0~15)
Electronic Shutter	1/25(30)~1/10,000sec
Noise Reduction	3DNR (Off, Auto, Low, Middle, High)
DSS(Sens-up)	X15
Mirror	Off, On(Mirror, Flip, Rotation)
Other Features	Motion Detection (4 Zones), Privacy Mask (8 Zones), Defog, Gamma, Lens Shading etc.
Communication	RS232C-TTL 3.3~5V / Default: 9600bps (Sony Visca, Pelco-D/P)
No. of Camera ID	Up to 255
Power Source	DC9V ~ 15V
Power Consumption	Less than 3.2 Watts (265mA)
Operating Temp.	-20 $^{\circ}$ C ~ 60 $^{\circ}$ C (Humidity :0%RH ~ 90%RH)
Size (mm)	43.6(W) x 45.3(H) x 67(D)
Weight	162 g (Giftbox Packing)

# DCC-Z1022

## CMOS VIDEO ZOOM MODULE

### Pin Connections



### B – UART & Power

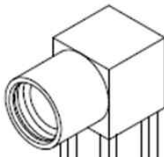
No.	Pin Item	No.	Pin Item
1	DC (9~15V) PWR IN	4	RXD (UART 5V IN)
2	GND	5	TXD (UART 5V OUT)
3	KEY Input	6	EXT. D/N IN

Wafer DIP type: **1.25mm pitch – 6 pin**

Manufacturer: **Yeonho**

MFG Part Number: **12512WR-06**

### C – MMXC (for SDI)



### A – LVDS & Etc.

No.	Pin Item	No.	Pin Item	No.	Pin Item	No.	Pin Item
1	TXOUT3+ (LVDS)	9	TXOUT0+ (LVDS)	17	DC IN	25	N/C
2	TXOUT3- (LVDS)	10	TXOUT0- (LVDS)	18	DC IN	26	N/C
3	TXCLKOUT+ (LVDS)	11	GND	19	KEY Input	27	TXOUT5+ (LVDS)
4	TXCLKOUT- (LVDS)	12	TXD (5V)	20	GND	28	TXOUT5- (LVDS)
5	TXOUT2+ (LVDS)	13	RXD (5V)	21	TXOUT7+ (LVDS)	29	TXOUT4+ (LVDS)
6	TXOUT2- (LVDS)	14	DC IN	22	TXOUT7- (LVDS)	30	TXOUT4- (LVDS)
7	TXOUT1+ (LVDS)	15	DC IN	23	TXOUT6+ (LVDS)		
8	TXOUT1- (LVDS)	16	DC IN	24	TXOUT6- (LVDS)		

SMD type: **0.4mm pitch – 30 pin Micro-coaxial Cable**

Manufacturer: **KEL**

MFG Part Number: **USL20-30S**