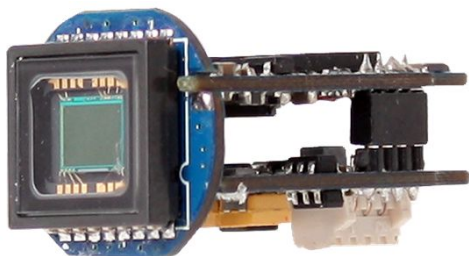


ACC-3330

CCD VIDEO MODULE



Main Features

- 1/3" 960H Sony Super HAD CCD II
- 520K Pixels (700 TV Lines)
- Lens: Fixed Board/Pinhole Lens (via Housing Lens Holder)
- OSD Available (Option, GPIO type OSD Cable)
- Audio Available (Option)
- 2D-DNR
- CCD Video Module (17Ø and etc.3-boards)

ACC-3330



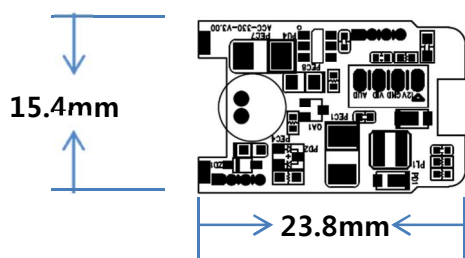
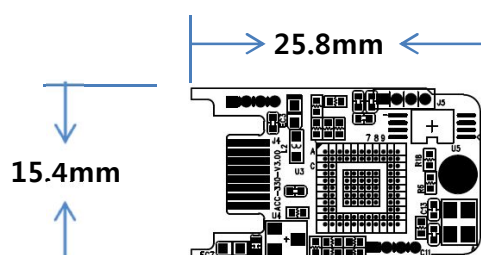
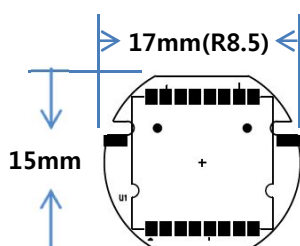
ACC-3330A



Specifications

Model	ACC-3330N	ACC-3330P
Signal System	NTSC	PAL
Pickup Device	1/3"(D-6mm) 960H SONY Super HAD CCD II	
Scanning System	2:1 Interlace	
Sync. System	Internal	
Total Pixels	520K [1020(H)x508(V)]	610K [1020(H)x596(V)]
Effective Pixels	480K [976(H)x494(V)]	570K [976(H)x582(V)]
Scanning Frequency	59.94Hz(VD)	50Hz(VD)
Min. Illumination	0.1Lux	
Mechanical ICR	N/A	
H-Resolution	700TV Lines(H)	
S/N Ratio	More than 50dB (AGC off)	
Lens	Fixed Iris Lens	
Lens (Mount)	Board (M12) – Housing Lens Holder	
OSD	GPIO type OSD Cable (Option)	
Camera Title	Off, On(Max. 52 Characters)	
Language	English, Japanese, Chinese(Simplified), Russian, French, Spanish, Portuguese, German	
Exposure	Manual	
White Balance	AWB, ATW, Push, Push Lock, User1, User2, Anti-CR	
BLC	Off, BLC, HLC	
Day & Night Mode	AUTO, COLOR, B/W, EXT1, EXT2	
Gain Control	AGC (0.25, 0.5, 0.75, 1)	
Electronic Shutter	1/60~1/100,000sec	1/50~1/100,000sec
Noise Reduction	2D-DNR (Y, C, Y/C)	
Mirror	Off, On(MIRROR)	
Other Features	MOTION (4 Zones), PRIVACY (4 Zones), ATR	
Microphone	Option (ACC-3330A)	
Signal Output	1.0 Vp-p Composite (75Ω)	
Power Source	DC12V	
Power Consumption	Less than 0.85Watts (70mA@DC12V)	
Operating Temp.	-10℃ ~ 55℃ (Humidity :0%RH ~ 90%RH)	
Size (mm)	17Ø and etc. 3-Boards	
Weight	4.5 g (Including OLFP)	

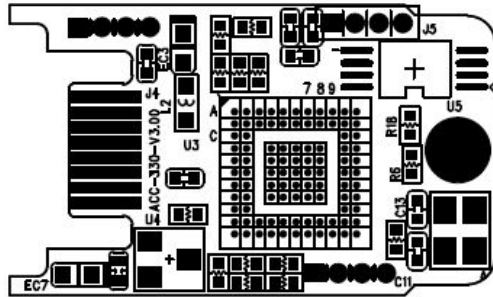
Dimension



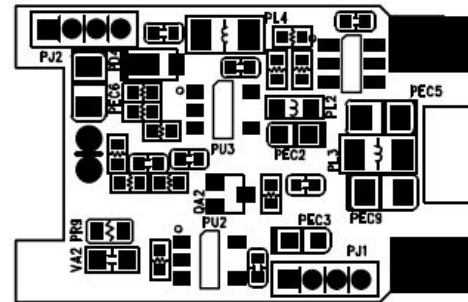
ACC-3330

CCD VIDEO MODULE

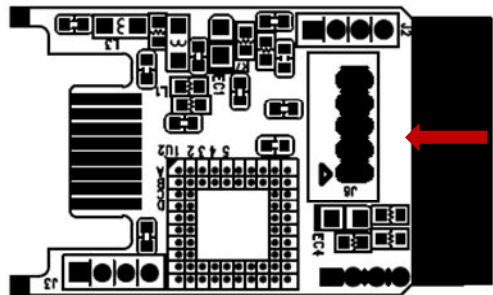
Pin Connections



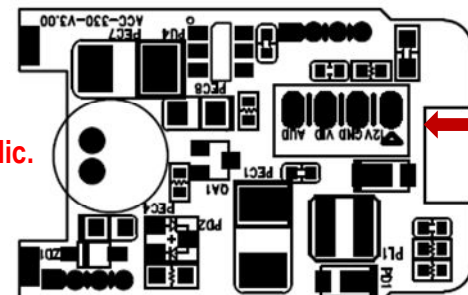
DSP Board (TOP)



Power Board (TOP)








DSP Board (BOTTOM)







Power Board (BOTTOM)

J6 – Hand Soldering Work

-  DOWN key
-  UP key
-  SET key
-  RIGHT key
-  LEFT key

Conn. – Hand Soldering Work

-  DC12V (Power Input – DC12V)
-  GND (Ground)
-  Video (Analog Video Out)
-  Audio (Audio Out)

MIC - Audio



No.	Pin Item	No.	Pin Item
1	MIC In / GND	2	GND / MIC In