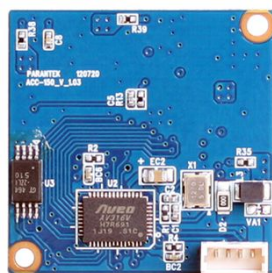
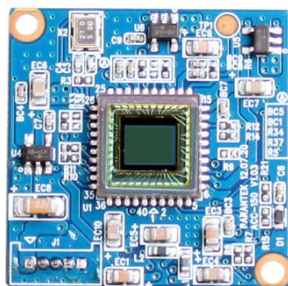


DCC-150

CMOS VIDEO MODULE

USB 2.0
CAMERA

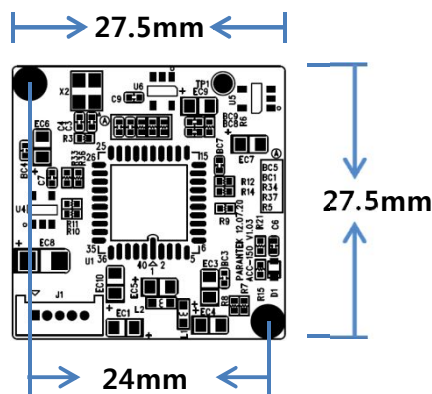


Main Features

- 1/3" 0.35M(VGA) Progressive CMOS Image Sensor
- 350K Pixels (VGA)
- Mountable Lens: Fixed Board Lens
- Strong at Low Lux Light Condition for Security Purpose
- Excellent Quality of Digital YUV Videos
- USB2.0 Compliant with UVC Driver
- Appointing unique H/W ID Available for dual cameras per PC
- Best for ATM, Kiosk, POS Application
- CMOS USB2.0 Video Module (27.5x27.5mm 1-board)



Dimension



Ø3.5(2.1mm hole) x 2ea

Option

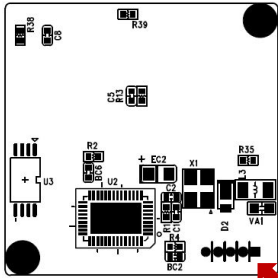
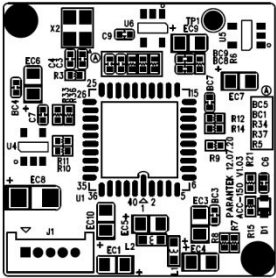
Specifications

Model	DCC-150
Signal System	Digital raw YUV
Pickup Device	1/3"(D-6mm) 0.35K VGA CMOS Sensor
Scanning System	4:3 Progressive
Sync. System	Internal
Total Pixels	0.38M [732(H)x524(V)]
Effective Pixels	0.35M [728(H)x488(V)]
Min. Illumination	0.2Lux
H-Resolution	550TV Lines(H)
S/N Ratio	More than 46dB
Video Out	VGA via USB
Capturing Speed	30fps
Lens	Option
Lens (Mount)	N/A
OSD	N/A
Exposure	Auto
White Balance	Auto
Day & Night Mode	Color (Factory Default)
Gain Control	Auto
Electronic Shutter	Auto
Mirror	Off
Snap-shot	N/A
Supported O/S	UVC Compatible O/S Windows XP, Widows Vista, Windows 7, Linux
No. of Camera ID	Available (Up to 2 per PC)
Power Source	DC5V via USB
Power Consumption	Less than 0.6 Watts (120mA)
Operating Temp.	-10℃ ~ 50℃ (Humidity :0%RH ~ 80%RH)
Size (mm)	27.5(W) x 27.5(D) – 1 board
Weight	3.5 g (Including OLPF)

DCC-150

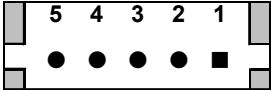
CMOS VIDEO MODULE

Pin Connections



J1

J1



No.	Pin Item	No.	Pin Item
1	DC 5V	4	GND
2	DM	5	GND (Not in use)
3	DP		