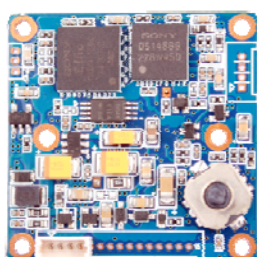
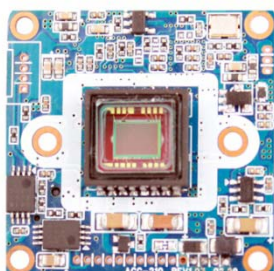


# ACC-2130

## CCD VIDEO MODULE



### Main Features

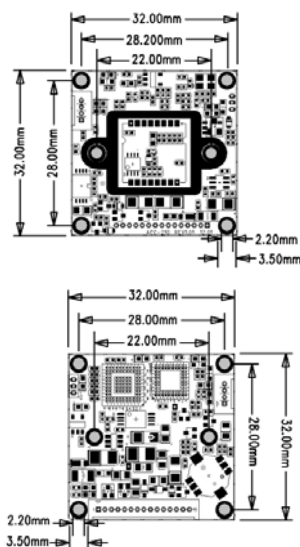
- 1/3" 960H Sony Super HAD CCD II
- 520K Pixels (700 TV Lines)
- Mountable Lens: Fixed, Pinhole, Manual VF, DC Auto Vari-focal , ICR Vari-focal Lens
- Built-in OSD Switch
- 2D-DNR
- CCD Video Module (32x32mm PCB 1-board)



### Specifications

Model	ACC-2130N	ACC-2130P
Signal System	NTSC	PAL
Pickup Device	<b>1/3"(D-6mm) 960H SONY Super HAD CCD II</b>	
Scanning System	2:1 Interlace	
Sync. System	Internal	
Total Pixels	520K [1020(H)x508(V)]	610K [1020(H)x596(V)]
Effective Pixels	480K [976(H)x494(V)]	570K [976(H)x582(V)]
Scanning Frequency	59.94Hz(VD)	50Hz(VD)
Min. Illumination	<b>0.1Lux, 0.05Lux(Night with ICR )</b>	
Mechanical ICR	<b>Available (Option)</b>	
H-Resolution	<b>700TV Lines(H)</b>	
S/N Ratio	More than 50dB (AGC off)	
Lens	<b>DC Auto &amp; Fixed Iris Lens</b>	
Lens (Mount)	Board (M12), VF(Ø14), and CS type – Lens Holder	
OSD	Via 5-directional On-board Tact-switch, GPIO Port	
Camera Title	Off, On(Max. 52 Characters)	
Language	English, Japanese, Chinese(Simplified), Russian, French, Spanish, Portuguese, German	
Exposure	DC, Manual	
White Balance	AWB, ATW, Push, Push Lock, User1, User2, Anti-CR	
BLC	Off, BLC, HLC	
Day & Night Mode	AUTO, COLOR, B/W, EXT1, EXT2	
Gain Control	AGC (0.25, 0.5, 0.75, 1)	
Electronic Shutter	1/60~1/100,000sec	1/50~1/100,000sec
Noise Reduction	2D-DNR (Y, C, Y/C)	
Mirror	Off, On(MIRROR)	
Other Features	MOTION (4 Zones), PRIVACY (4 Zones), ATR	
Microphone	N/A	
Signal Output	1.0 Vp-p Composite (75Ω)	
Power Source	DC12V	
Power Consumption	Less than 1Watts (80mA@DC12V)	
Operating Temp.	-10℃ ~ 55℃ (Humidity :0%RH ~ 90%RH)	
Size (mm)	32x32 1-board	
Weight	7g (Including OLPF)	

### Dimension



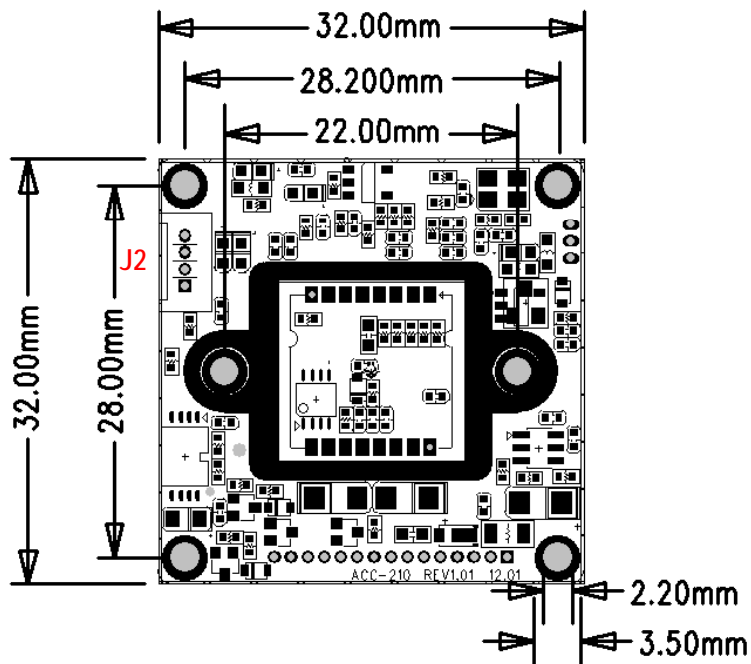
### Option

- Mechanical TDN
- Relative models
  - **ACC-210**: 1/3" 960H Sony EX-view HAD CCD II

# ACC-2130

## CCD VIDEO MODULE

### Pin Connections



### J1 - Multi-pins

No.	Pin Item	No.	Pin Item
1	DC12V	9	UP
2	GND	10	RIGHT
3	CVBS	11	LEFT
4	GND	12	SET
5	DC12V	13	MD_OUT
6	EXT_D&N	14	ICR1
7	D&N_OUT	15	ICR2
8	DOWN		

### J2 - DC IRIS

No.	Pin Item	No.	Pin Item
1	DMP+	3	DRV+
2	DMP-	4	GND

### J3 - RS-232C

No.	Pin Item	No.	Pin Item
1	RS232C TTL 3.3V RXD	3	GND
2	RS232C TTL 3.3V TXD		

