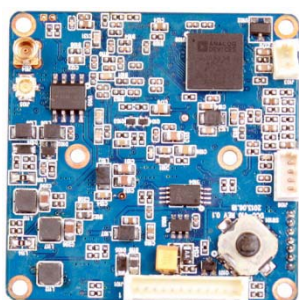
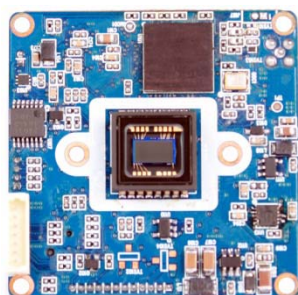


# DCC-410

## CCD VIDEO MODULE

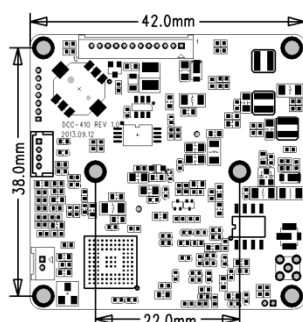
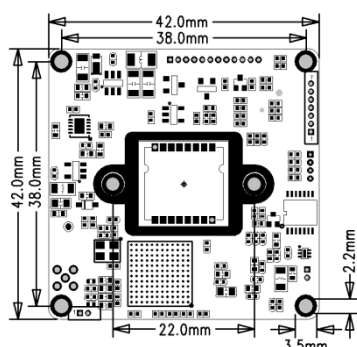


### Main Features

- 1/3" 1M(720P) Sony Progressive CCD Image Sensor
- 1Mega Pixels (800 TV Lines)
- Mountable Lens: Fixed, Pinhole, Auto VF, Auto ICR VF Lens
- TDN ICR Mechanism Available
- 3D-NR Supported
- Built-in OSD Switch
- VD Signal Out or Strobe Out available
- HD-SDI Video Out Supporting standard SMPTE protocol
- Analog Composite Video Out
- CCD HD-SDI Video Module (42x42mm 1-board)



### Dimension



### Option

- Mechanical TDN ICR
- Lens

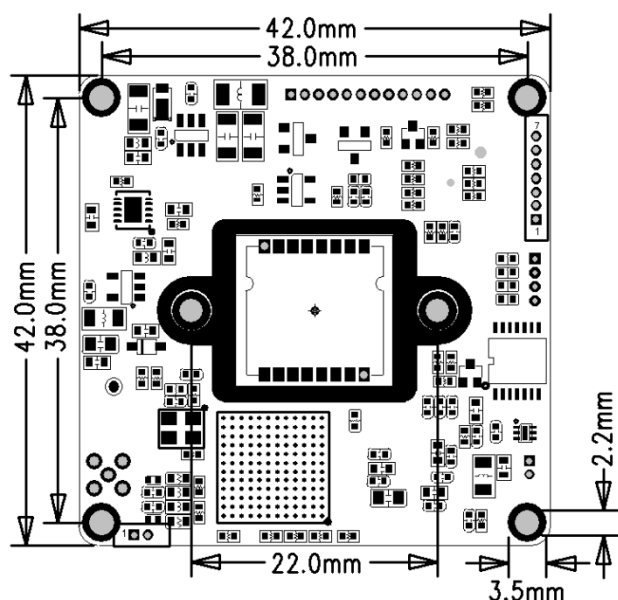
### Specifications

Model	DCC-410
Signal System	HD-SDI (Serial Data Interface)
Pickup Device	1/3"(D-6mm) 1M SONY Ex-View HAD CCD II
Scanning System	Progressive Scan (16:9)
Sync. System	Internal
Total Pixels	1M [1348(H)x746(V)]
Effective Pixels	950K [1296(H)x736(V)]
Scanning Frequency	30Hz(VD) for NTSC out   25Hz(VD) for PAL out
Min. Illumination	0.2Lux(Day), 0.1Lux(Night)
Mechanical ICR	Available (Option)
H-Resolution	More than 800TV Lines(H)
S/N Ratio	More than 50dB (AGC off)
Video Out 1	HD-SDI : 720P@50/60
Video Out 2	Composite Video 1V p.p (NTSC/PAL - 75Ω)
Lens	Option
Lens (Mount)	Board Mount(M12), VF Mount(Ø14), CS Mount
OSD	Via 5-direction Tact-switch
Camera Title	Off, On(Max. 10 Characters)
Language	English, Russian, French, Spanish, Portuguese, German, Chinese(Simplified)
Exposure	Auto, Manual
White Balance	Auto, ATW, Push, Manual
BLC	Off, BLC, HLC
Day & Night Mode	AUTO, COLOR, B/W, EXT
Gain Control	AGC (0~20)
Electronic Shutter	1/25(30), 1/50(60)~1/40,000sec
Noise Reduction	3D-NR (Off, Low, Middle, High)
Mirror	Off, On(Mirror, Flip, Rotation)
Other Features	Motion Detection (1 Zone), Privacy Mask (8 Zones), Flickerless, ACE, D-Zoom(X16), Lens Shading, Defog, Gamma(Low, Middle0, Middle1, High)
Communication	RS485 (Pelco-D, Parantek BP protocol) Default: 9600bps
No. of Camera ID	Up to 255
Signal Out	VD Ver.: VD out / ST Ver.: Strobe out
Power Source	DC12V
Power Consumption	Less than 2 Watts (150mA)
Operating Temp.	-10℃ ~ 55℃ (Humidity :0%RH ~ 90%RH)
Size (mm)	42(W) x 42(D) - 1 board
Weight	10 g (Including OLPF)

# DCC-410

## CCD VIDEO MODULE

### Pin Connections



#### J103

No.	Pin Item	No.	Pin Item
1	ICR +	2	ICR -

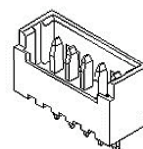
Wafer DIP type: **1.25mm pitch – 2 pin**  
 Manufacturer: **Yeonho**  
 MFG Part Number: **12512WS-2**



#### J106

No.	Pin Item	No.	Pin Item
1	DMP+	3	DRV+
2	DMP-	4	GND

Wafer DIP type: **1.25mm pitch – 4 pin**  
 Manufacturer: **Molex**  
 MFG Part Number: **53047-0410**



#### J101

No.	Pin Item	No.	Pin Item
1	CVBS	7	STROBE OUT
2	GND	8	RS485 TX
3	DC 12V +	9	RS485 RX
4	GND	10	RS485 DRV
5	EXT D/N	11	AD KEY
6	VD OUT	12	ALARM OUT

Wafer DIP type: **1.25mm pitch – 12 pin**  
 Manufacturer: **Yeonho**  
 MFG Part Number: **12512WS-12**

