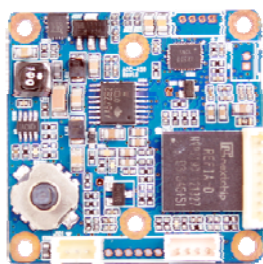
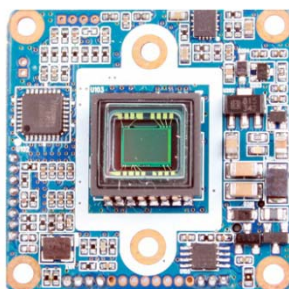
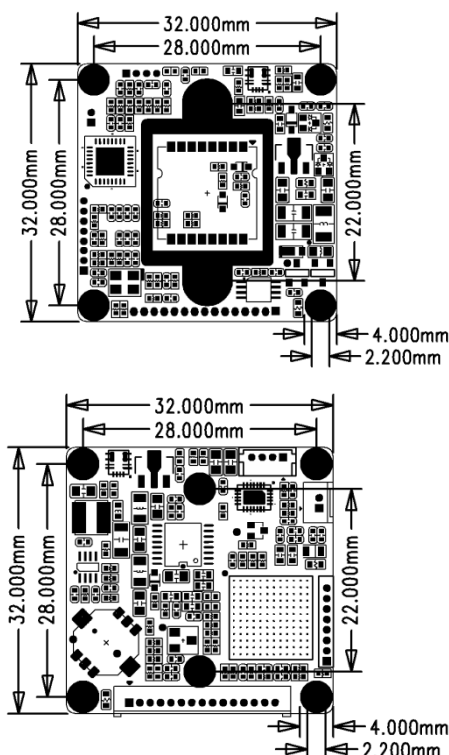


ACC-4230

CCD VIDEO MODULE



Dimension



Option

- Mechanical TDN ICR
- UTC Controller
- Relative Model
- **ACC-420**: 1/3" 960H Sony EX-view HAD CCD II

Main Features

- 1/3" 960H Sony Super HAD CCD II
- 520K Pixels (700 TV Lines)
- Mountable Lens: Fixed, Pinhole, Manual VF, DC Auto Vari-focal, ICR Vari-focal Lens
- Built-in OSD Switch
- 3D-DNR / DSS (Sens-up)
- UTC(Pelco-C) Built-in
- CCD Video Module (32x32mm PCB 1-board)

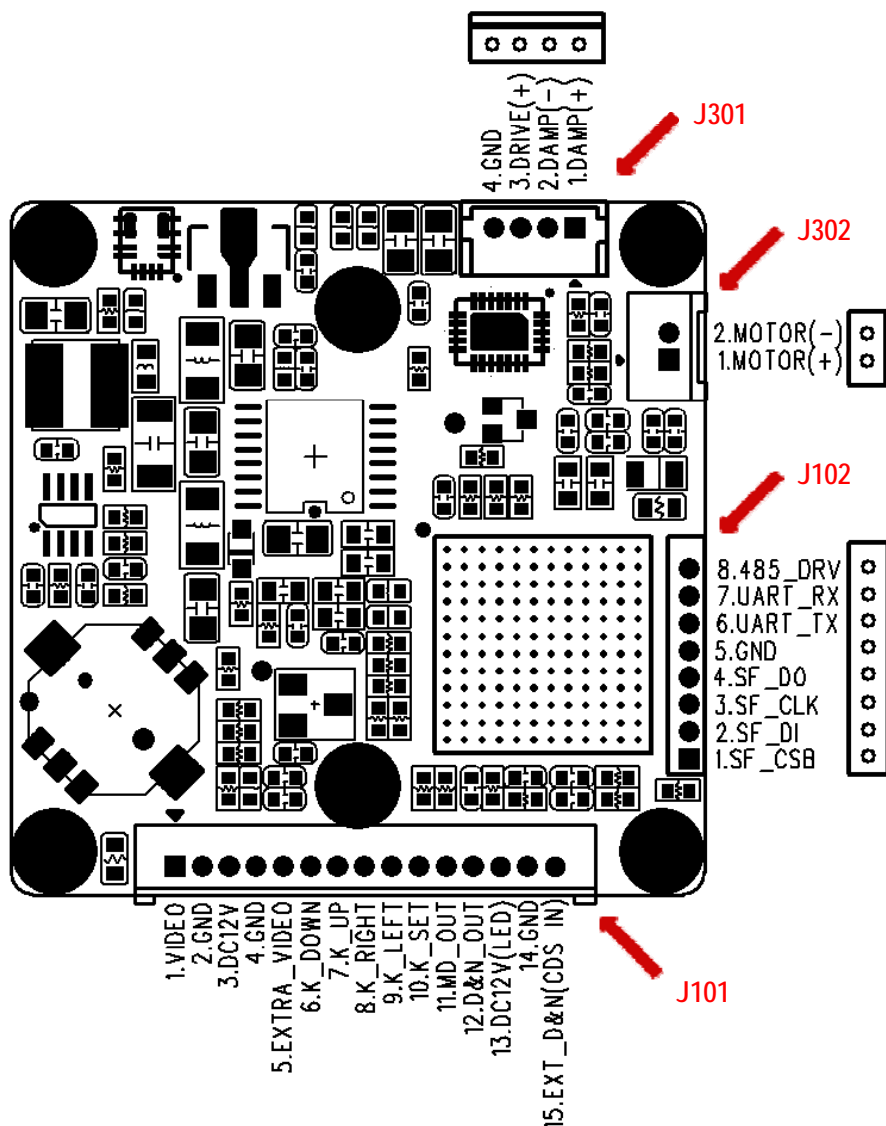


Specifications

Model	ACC-4230N	ACC-4230P
Signal System	NTSC	PAL
Pickup Device	1/3"(D-6mm) 960H SONY Super HAD CCD II	
Scanning System	2:1 Interlace	
Sync. System	Internal	
Total Pixels	520K [1020(H)x508(V)]	610K [1020(H)x596(V)]
Effective Pixels	480K [976(H)x494(V)]	570K [976(H)x582(V)]
Scanning Frequency	59.94Hz(VD)	50Hz(VD)
Min. Illumination	0.1Lux, 0.05Lux(Night with ICR), 0.0002Lux(DSS on)	
Mechanical ICR	Available (Option)	
H-Resolution	700TV Lines(H)	
S/N Ratio	More than 52dB (AGC off)	
Lens	DC Auto & Fixed Iris Lens	
Lens (Mount)	Board (M12), VF (Ø14) and CS type – Lens Holder	
OSD	via 5-direction On-board Tact-switch, GPIO Port, UTC	
Camera Title	Off, On(Max. 15 Characters)	
Language	English, Korean, Japanese, Chinese(Simplified), Chinese(Traditional), Russian, French, Spanish, Italian, Portuguese, German, Dutch, Polish, Turkish, Hebrew, Arabic	
Exposure	DC, Manual	
White Balance	AWB, ATW, AWC->SET, MANUAL	
BLC	DWDR, BLC, HSBLC	
Day & Night Mode	AUTO, COLOR, B/W	
Gain Control	AGC (OFF, LOW, MIDDLE, HIGH)	
Electronic Shutter	1/60~1/100,000sec	1/50~1/100,000sec
DSS (Sens-up)	Off, On(Max. x256)	
Noise Reduction	SMART 3D-DNR	
Mirror	Off, On(MIRROR, V-FLIP, ROTATE)	
Other Features	MOTION(4 Zones), PRIVACY(8 Zones), F-DNR(De-fog), D-Zoom(Max. x32), DIS, FREEZE, NEG. IMAGE, LENS SHADING	
Microphone	N/A	
Signal Output	1.0 Vp-p Composite (75Ω)	
Power Source	DC12V	
Power Consumption	Less than 1.5Watts (110mA@DC12V)	
Operating Temp.	-10℃ ~ 55℃ (Humidity :0%RH ~ 90%RH)	
Size (mm)	32x32 1-board	
Weight	7 g (Including OLPF)	

CCD VIDEO MODULE

Pin Connections



J301 – DC IRIS

No.	Pin Item	No.	Pin Item
1	DMP+	3	DRV+
2	DMP-	4	GND

J302 – TDN ICR

No.	Pin Item	No.	Pin Item
1	ICR (+)	2	ICR (-)

J101 – Multi-ports

No.	Pin Item	No.	Pin Item
1	CVBS	9	OSD KEY LEFT
2	GND	10	OSD KEY SET
3	DC12V	11	MD OUT
4	GND	12	D&N OUT
5	2ND CVBS	13	DC12V
6	OSD KEY DOWN	14	GND
7	OSD KEY UP	15	EXT D&N (CDS IN)
8	OSD KEY RIGHT		

J102 – RS485 etc.

No.	Pin Item	No.	Pin Item
1	Serial Flash CSB	5	GND
2	Serial Flash DI	6	RS485 TTL 3.3V TXD
3	Serial Flash Clock	7	RS485 TTL 3.3V RXD
4	Serial Flash DO	8	RS485 DRV