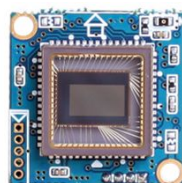


ACC-670

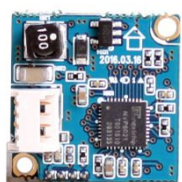
CMOS VIDEO MODULE



With a Lens Holder



1st board Front



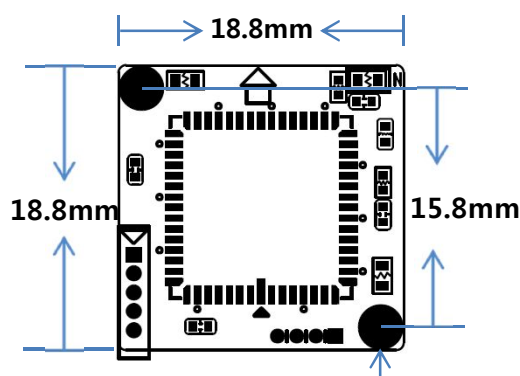
2nd board Rear

Main Features

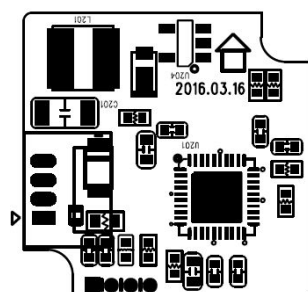
- 1/2.7" 1080p CMOS Sensor
- 2.09M Pixels (1080p25/30)
- Mountable Lens: Fixed
- 2D-DNR Supported
- AHD2.0 Camera
- CMOS AHD2.0 Video Module (18.8x18.8mm 2-boards)



Dimension



Ø3(2mm hole) x 2ea
PCB Coordinate (-7.9, 7.9) (7.9, -7.9)



Specifications

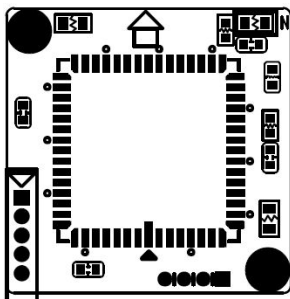
Model	ACC-670
Signal System	AHD 2.0
Pickup Device	1/2.7"(D-6.64mm) 2.09M CMOS Sensor
Scanning System	Progressive Scan (16:9)
Sync. System	Internal
Total Pixels	2.27MP [2066(H)x1100(V)]
Active Pixels	2.09MP [1930(H)x1088(V)]
Min. Illumination	0.4Lux
H-Resolution	More than 1,000TV Lines(H)
S/N Ratio	40dB (AGC off)
Video Out (BNC)	AHD: 1080p@25/30
Lens	Option
Lens (Mount)	Board (M12) type – Lens Holder
OSD	N/A
Camera Title	N/A
Language	N/A
Exposure	ESC
White Balance	ATW
BLC	N/A
Day & Night Mode	Color (Default) / Auto, B/W (Factory Selectable)
Gain Control	Auto
Electronic Shutter	Auto
DSS(Sens-up)	N/A
Noise Reduction	2DNR
Mirror	Off (Default) / H/V Mirror (Factory Selectable)
Other Features	N/A
Microphone	N/A
Power Source	DC 5~12V
Power Consumption	Less than 1.5 Watts (100mA@DC12V)
Operating Temp.	-10℃ ~ 55℃ (Humidity :0%RH ~ 90%RH)
Size (mm)	18.8x18.8 2-boards
Weight	3.5 g (without OLPF)

ACC-670

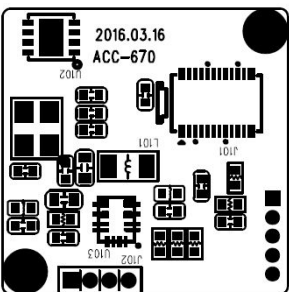
CMOS VIDEO MODULE

Pin Connections

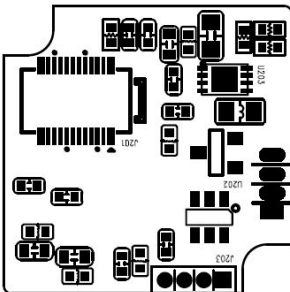
1st Front



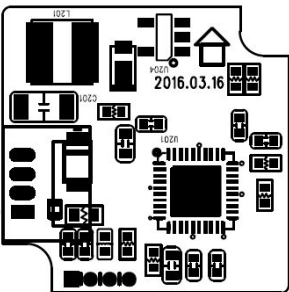
1st Rear



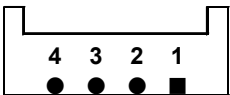
2nd Front



2nd Rear



J202



No.	Pin Item	No.	Pin Item
1	VIDEO	2	GND
3	VCC (DC5~12V)	4	GND

Wafer DIP type: **1.25mm pitch – 4 pin (Angle type)**
Manufacturer: **Molex**
MFG Part Number: **53048-0410**