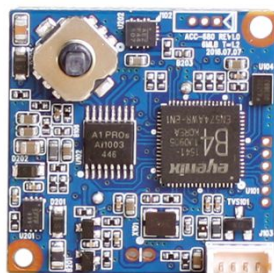
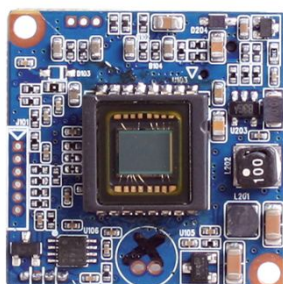


# ACC-680

## CCD VIDEO MODULE

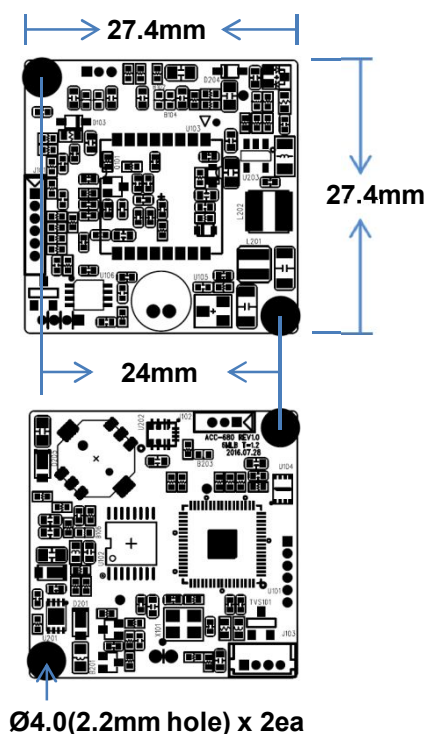


### Main Features

- 1/3" 960H Panasonic CCD
- 520K Pixels (700 TV Lines)
- Mountable Lens: Fixed, Pinhole, Manual VF Lens (with lens holder built-in housing)
- Audio (ACM-680A)
- Built-in OSD Switch
- 3D-DNR / DSS (Sens-up)
- Wide Voltage Range for Operation: DC5~12V
- CCD Video Module (28x28 type)



### Dimension



### Option

- Audio (ACC-680A)

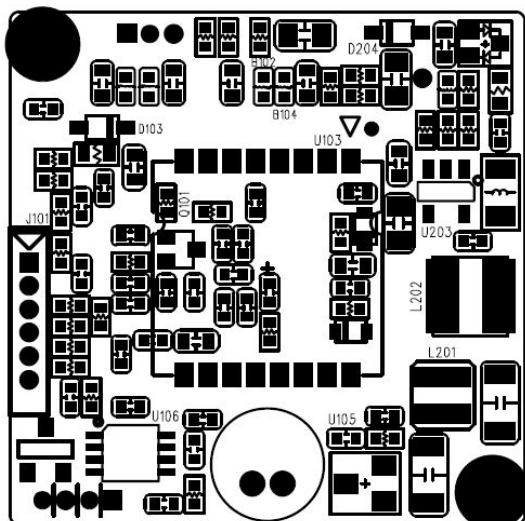
### Specifications

Model	ACC-680N / ACC-680AN	ACC-680P / ACC-680AP
Signal System	NTSC	PAL
Pickup Device	1/3"(D-6mm) 960H Panasonic CCD	
Scanning System	2:1 Interlace	
Sync. System	Internal	
Total Pixels	520K [1020(H)x508(V)]	610K [1020(H)x596(V)]
Effective Pixels	480K [976(H)x494(V)]	570K [976(H)x582(V)]
Scanning Frequency	59.94Hz(VD)	50Hz(VD)
Min. Illumination	0.1Lux(Day), 0.0001Lux(DSS on)	
H-Resolution	700TV Lines(H)	
S/N Ratio	More than 52dB (AGC off)	
Lens	Fixed IRIS Lens (Board, Pinhole, Manual VF)	
Lens (Mount)	through Lens holder on Miniature Case (M12)	
OSD	via 5-direction Tact-switch	
Camera Title	Off, On(Max. 8 Characters)	
Language	English, Chinese (Simplified), Chinese(Traditional)	
Exposure	AE, Manual	
White Balance	ATW, PUSH, MANUAL	
BLC	BLC, HLC	
Day & Night Mode	AUTO, DAY, NIGHT	
Gain Control	AGC (0~20)	
Electronic Shutter	1/60~1/120,000sec	1/50~1/120,000sec
DSS (Sens-up)	Off, On(Max. x1024)	
Noise Reduction	3D-DNR (LOW, MIDDLE, HIGH)	
Mirror	Off, On(MIRROR)	
Other Features	MOTION (4 Zones), PRIVACY (8 Zones), DEFOG NEG. IMAGE, LENS SHADING	
Microphone	Available (Option: ACM-F680A)	
Signal Output	1.0 Vp-p Composite (75Ω)	
Power Source	DC5~12V	
Power Consumption	Less than 1.1Watts (90mA@DC12V)	
Operating Temp.	-10℃ ~55℃ (Humidity :0%RH ~ 90%RH)	
Size (mm)	27.4 x 27.4	
Weight	4.5g (Without OLPF)	

# ACC-680

## CCD VIDEO MODULE

### Pin Connections

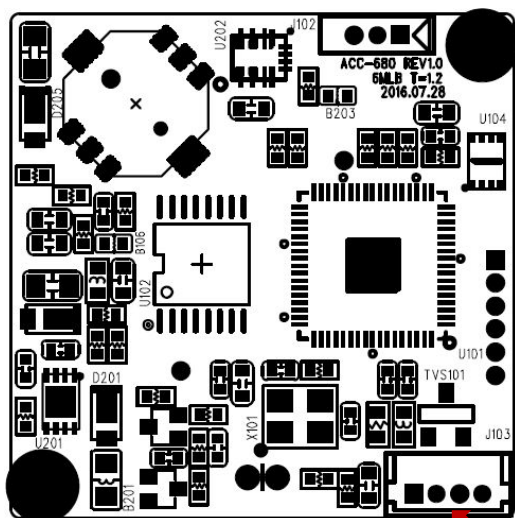


MIC1

### MIC 1 - Audio

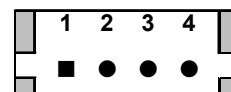


No.	Pin Item	No.	Pin Item
1	MIC IN / GND	2	GND / MIC IN

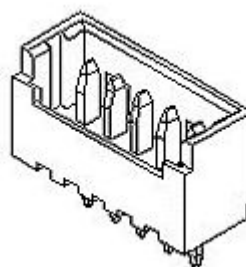


J103

### J103



No.	Pin Item	No.	Pin Item
1	AUDIO OUT	2	VIDEO
3	GND	4	VCC (DC5~12V)



Wafer DIP type: 1.25mm pitch – 4 pin

Manufacturer: **Molex**

MFG Part Number: **53047-0410**