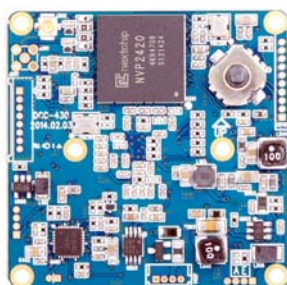
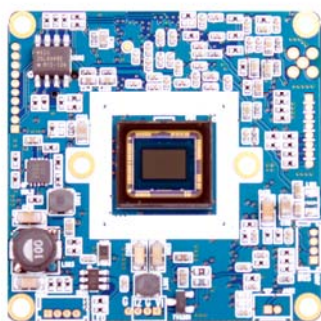


DCC-430

CMOS VIDEO MODULE

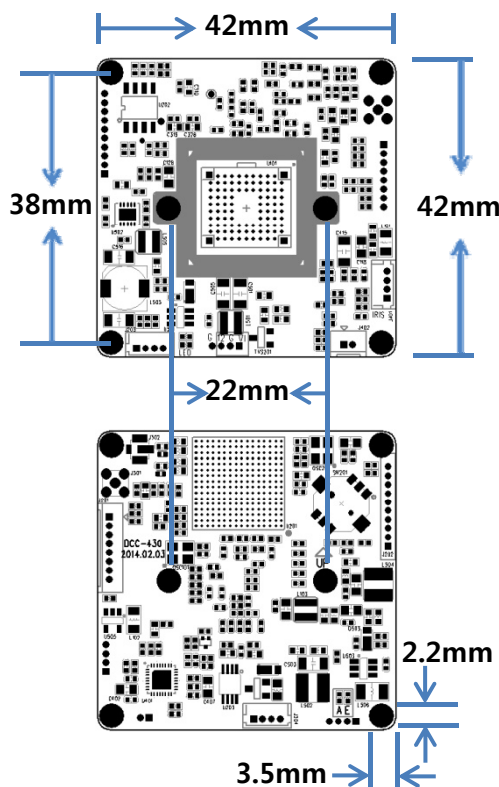


Main Features

- 1/2.9" 2.18M(1080P) Sony Exmor CMOS Image Sensor
- 2Mega Pixels (1080P25/30/50/60, 1080i50/60, 720P50/60)
- Mountable Lens: Fixed, Auto VF, Auto ICR VF Lens
- TDN ICR Mechanism Available
- WDR / 3D-NR / DSS(Sens-up) Supported
- Built-in OSD Switch
- UTC(Pelco-C) Supported via CVBS
- HD-SDI Video Out Supporting standard SMPTE protocol
- Analog Composite Video Out
- CMOS HD-SDI Video Module (42x42mm 1-board)



Dimension



Option

- Mechanical TDN ICR
- Lens
- UTC Controller

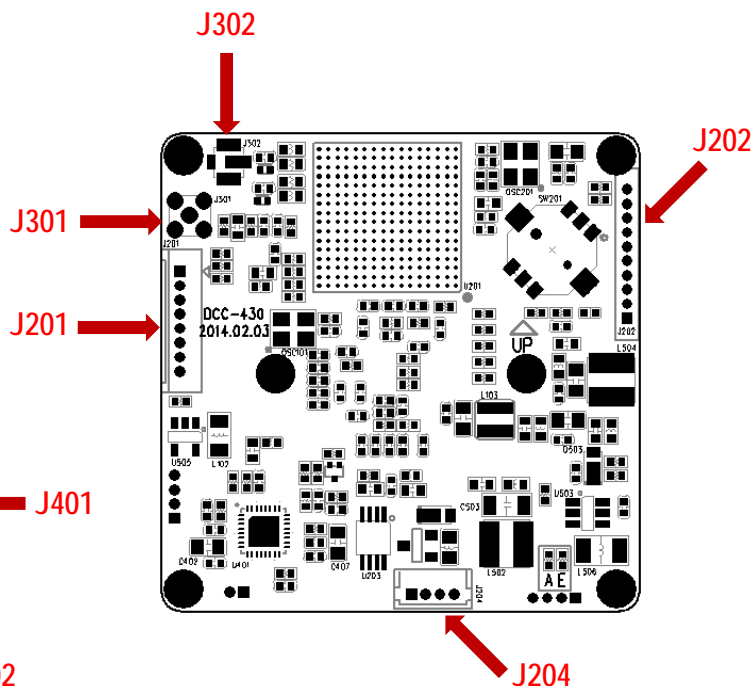
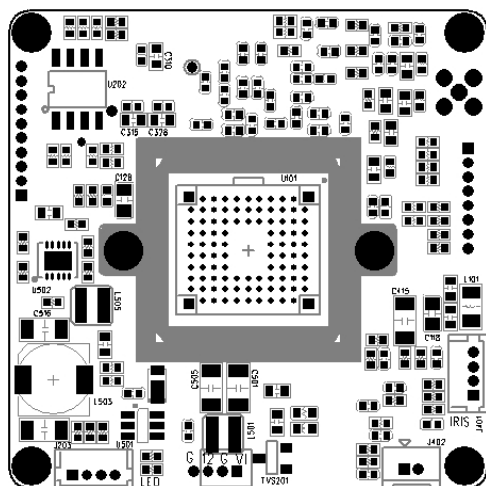
Specifications

Model	DCC-430
Signal System	HD-SDI (Serial Data Interface)
Pickup Device	1/2.9"(D-6.23mm) 2.18M SONY Exmore CMOS Sensor
Scanning System	Progressive Scan (16:9)
Sync. System	Internal
Total Pixels	2.18M [1952(H)x1116(V)]
Effective Pixels	2.12M [1936(H)x1096(V)]
Scanning Frequency	30Hz(VD) for NTSC out 25Hz(VD) for PAL out
Min. Illumination	0.2Lux(Day), 0.1Lux(Night), 0.006(DSS on)
Mechanical ICR	Available (Option)
H-Resolution	More than 1,000TV Lines(H)
S/N Ratio	More than 50dB (AGC off)
Video Out 1	HD-SDI: 1080i/p@50/60, 1080p@25/30, 720p@50/60
Video Out 2	Composite Video 1V p.p (NTSC/PAL - 75Ω)
Lens	DC Auto & Fixed Iris Lens
Lens (Mount)	Board (M12) and VF (Ø14) – Lens Holder
OSD	Via 5-direction Tact-switch, UTC(Controller: Optional)
Camera Title	Off, On(Max. 15 Characters)
Language	English, Russian, French, Spanish, Portuguese, German Chinese(Simplified), Chinese(Traditional), Japanese, Korean, Italian, Polish, Dutch, Turkish, Hebrew, Arabic
Exposure	DC, Manual
White Balance	AWB, ATW, AWC->SET, Manual, Indoor, Outdoor
BLC	Off, BLC, WDR, HSBLC (WDR is N/A on 1080p60 Mode)
Day & Night Mode	AUTO, COLOR, B/W, EXT
Gain Control	AGC (1~15)
Electronic Shutter	1/50(60)~1/50,000sec
Noise Reduction	2DNR, 3DNR, Smart NR (0~100)
DSS(Sens-up)	X30
Mirror	Off, On(Mirror, Flip, Rotation)
Other Features	Motion Detection (4 Zone), Privacy Mask (8 Zones), Flickerless, Lens Shading, Defog etc.
Communication	RS485 (Pelco-D compatible) Default: 9600bps
No. of Camera ID	Up to 255
Power Source	DC12V
Power Consumption	Less than 3 Watts (240mA)
Operating Temp.	-10℃ ~ 55℃ (Humidity :0%RH ~ 90%RH)
Size (mm)	42(W) x 42(D) – 1 board
Weight	10 g (Including OLPF)

DCC-430

CMOS VIDEO MODULE

Pin Connections



J401 - DC IRIS



No.	Pin Item	No.	Pin Item
1	DMP+	3	DRV+
2	DMP-	4	GND

Wafer DIP type: **1.25mm pitch – 4 pin**

Manufacturer: **Molex**

MFG Part Number: **53047-0410**

J203 - IR LED Board



No.	Pin Item	No.	Pin Item
1	DC12V	3	EXT_DN (CDS)
2	GND	4	D&N OUT

Wafer DIP type: **1.25mm pitch – 4 pin**

Manufacturer: **Molex**

MFG Part Number: **53047-0410**

J201 - RS485 / OSD etc.



No.	Pin Item	No.	Pin Item
1	GND	5	RS485 TTL 3.3V TXD
2	2ND CVBS	6	RS485 TTL 3.3V RXD
3	GND	7	RS485 DRV
4	AD KEY	8	ALARM OUT

Wafer DIP type: **1.25mm pitch – 8 pin**

Manufacturer: **Yeonho**

MFG Part Number: **12512WS-08B**

J402 - TDN ICR



No.	Pin Item	No.	Pin Item
1	ICR (+)	2	ICR (-)

Wafer DIP type: **1.25mm pitch – 2 pin**

Manufacturer: **Yeonho**

MFG Part Number: **12512WS-02B**

J204 - Power & CVBS



No.	Pin Item	No.	Pin Item
1	CVBS	3	DC12V
2	GND	4	GND

Wafer DIP type: **1.25mm pitch – 3 / 4 pin**

Manufacturer: **Yeonho / Molex**

MFG Part Number: **12512WS-03B / 53047-0410**

J202 - JTAG & Debug

No.	Pin Item	No.	Pin Item
1	MSF CSn	6	NC
2	MSF MOSI	7	3.3V OUT
3	MSF CLK	8	UART TXD
4	MSF MISO	9	UART RXD
5	GND	10	NC

J301 - HD-SDI Out - MMCX

J302 - HD-SDI Out - MHF