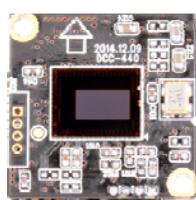


DCC-440

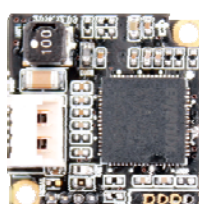
CMOS VIDEO MODULE



With a Lens Holder



1st board Front



2nd board Rear

Main Features

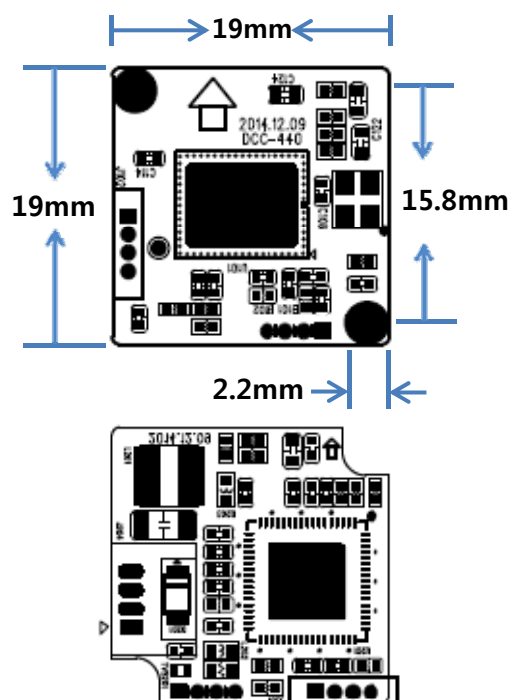
- 1/3" 1M(720P) CMOS Image Sensor
- 1Mega Pixels (720P50/60)
- Mountable Lens: Fixed
- HD-SDI Video Out Supporting standard SMPTE protocol
- CMOS HD-SDI Video Module (19x19mm 2-board)



Specifications

Model	DCC-440
Signal System	HD-SDI (Serial Data Interface)
Pickup Device	1/3"(D-6mm) 1M CMOS Sensor
Scanning System	Progressive Scan (16:9)
Sync. System	Internal
Total Pixels	1.01M [1368(H)x740(V)]
Effective Pixels	0.94M [1288(H)x728(V)]
Min. Illumination	0.4Lux
Mechanical ICR	N/A
H-Resolution	More than 800TV Lines(H)
S/N Ratio	40dB (AGC off)
Lens	Fixed Iris Lens
Lens (Mount)	Board (M12) type – Lens Holder
OSD	N/A
Camera Title	N/A
Language	N/A
Exposure	ESC
White Balance	ATW
HLC / BLC	N/A
Day & Night Mode	Color (Default) / Auto, B/W (Factory Selectable)
Gain Control	Auto
Electronic Shutter	Auto
Mirror	Off (Default) / H/V Mirror (Factory Selectable)
Other Features	N/A
Microphone	N/A
Signal Output	720p 25/40 (HD-SDI)
Power Source	DC12~24V
Power Consumption	Less than 1.1Watts (90mA @ DC12)
Operating Temp.	-10℃ ~ 55℃ (Humidity :0%RH ~ 90%RH)
Size (mm)	19(W) x 19(D) – 2-board
Weight	10 g (Including OLPF & Lens Holder)

Dimension



Option

- Lens

DCC-440

CMOS VIDEO MODULE

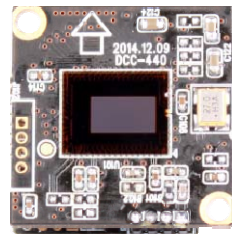
Pin Connections



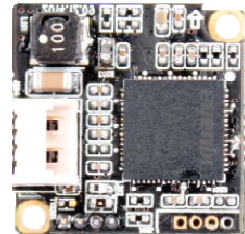
Front look with lens holder mount



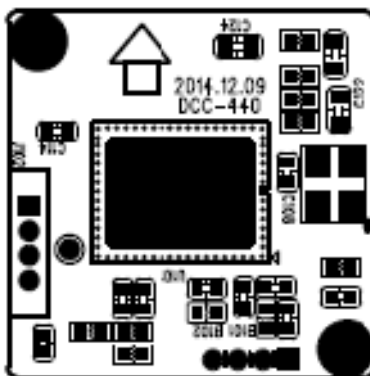
Side look with lens holder mount



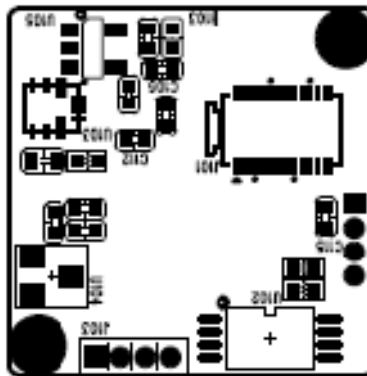
1st Board (Sensor)



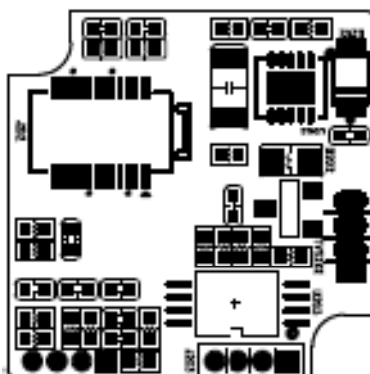
2nd Board (SDI TX)



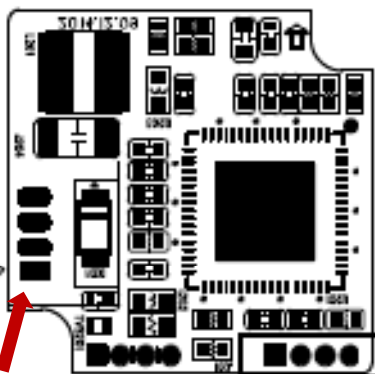
1st Front



1st Rear



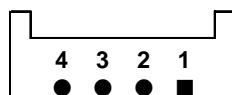
2nd Front



2nd Rear

J102

J203 – Power & Video



No.	Pin Item	No.	Pin Item
1	HD-SDI OUT	3	DC12VIN
2	GND	4	GND

Wafer DIP type: 1.25mm pitch – 4 pin

Manufacturer: **Molex**

MFG Part Number: **53048-0410**