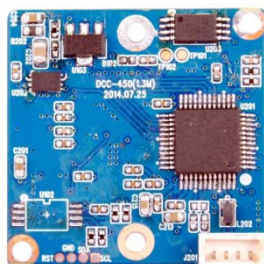
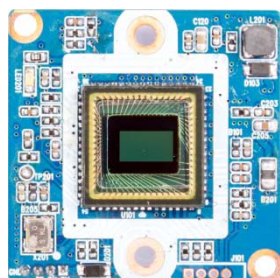


DCC-450

CMOS VIDEO MODULE

USB 2.0
CAMERA

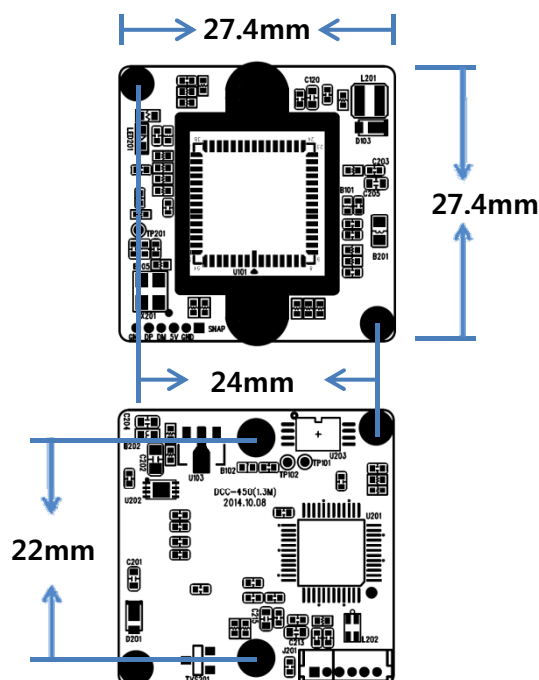


Main Features

- 1/3" 1M(720P) Progressive CMOS Image Sensor
- 1Mega Pixels (720p30, 800TV lines)
- Mountable Lens: Fixed Board Lens
- Strong at Low Lux Light Condition for Security Purpose
- Excellent Quality of Digital Raw YUV or MJPEG Videos
- USB2.0 Compliant
- Appointing unique H/W ID Available for dual cameras per PC
- Best for ATM, Kiosk, POS Application
- Snap-shot Feature Supported (450S series)
- CMOS USB2.0 Video Module (27.4x27.4mm 1-board)



Dimension



Specifications

Model	DCC-450 / DCC-450S
Signal System	MJPEG Encoded or Digital raw YUV
Pickup Device	1/3"(D-6mm) 1M 720p Progressive CMOS Sensor
Scanning System	Progressive Scan (16:9)
Sync. System	Internal
Total Pixels	1.01M [1368(H)x740(V)]
Effective Pixels	0.94M [1288(H)x728(V)]
Min. Illumination	0.4Lux
H-Resolution	More than 800TV Lines(H)
S/N Ratio	More than 40dB
Video Out	720p (1280x720) via USB
Capturing Speed	30fps in MJPEG Mode, 7fps in YUV Mode
Lens	Option
Lens (Mount)	Board Mount(M12)
OSD	N/A
Exposure	Auto
White Balance	Auto
Day & Night Mode	Color (Factory Default)
Gain Control	Auto
Electronic Shutter	Auto
Mirror	Off (Factory Default)
Snap-shot	No / Yes
Supported O/S	UVC Compatible O/S - Windows (CE/XP/Vista/Win7/Win8) - Linux(2.6.26 or later), Mac, Android etc
No. of Camera ID	Up to 2 per PC
Power Source	DC5V via USB
Power Consumption	Less than 1.2 Watts (240mA – MJPEG mode) Less than 0.6 Watts (120mA – YUV mode)
Operating Temp.	-10℃ ~ 55℃ (Humidity :0%RH ~ 90%RH)
Size (mm)	27.4(W) x 27.4(D) – 1 board
Weight	3.5 g (Including OLPF)

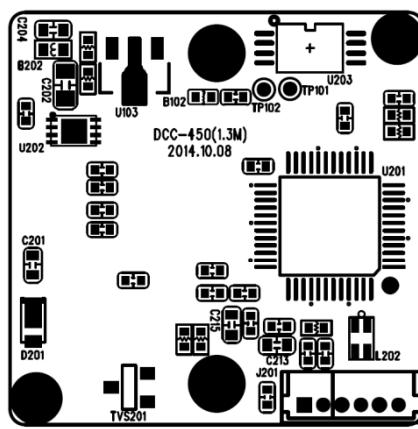
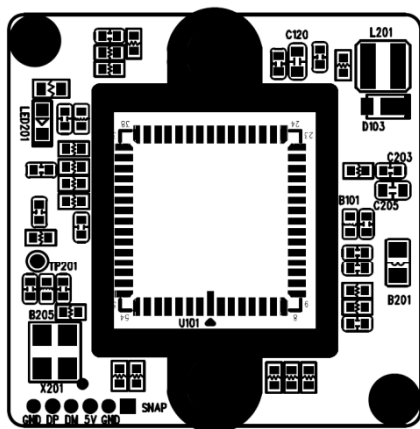
Option

- Lens
- Snap-shot (DCC-450S)

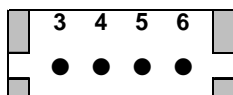
DCC-450

CMOS VIDEO MODULE

Pin Connections



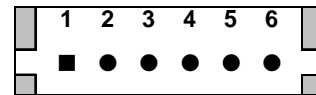
J201



No.	Pin Item	No.	Pin Item
3	DC 5V	5	DP
4	DM	6	GND

< DCC-450 >

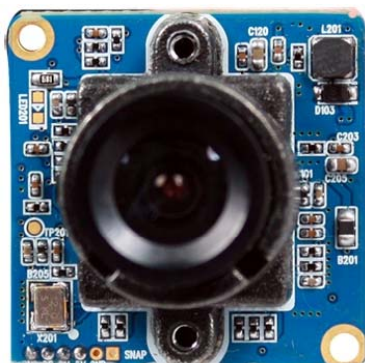
J201



No.	Pin Item	No.	Pin Item
1	SNAP SHOT (NH, Active L)	4	DM
2	GND	5	DP
3	DC 5V	6	GND

< DCC-450S >

< DCC-F450 >



Model	Focal Length	D	H	V
DCC-F450	f=3.6mm, F2.5	105°	79°	57.5°
DCC-F450-3	f=3mm, F2.0	133°	102°	74°
DCC-F450-4	f=4mm, F2.0	101°	86°	47°
DCC-F450-6	f=6mm, F2.0	66°	57°	31°
DCC-F450-8	f=8mm, F2.0	49°	42°	23°
DCC-F450-12	f=12mm, F2.0	31°	27°	15°

