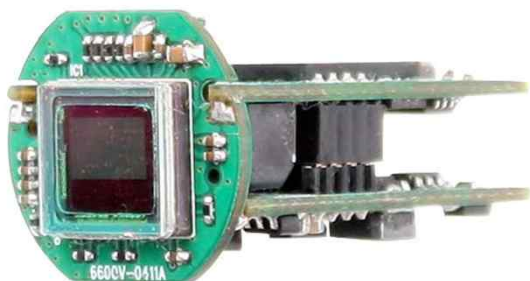


DCC-480

CMOS VIDEO MODULE



Main Features

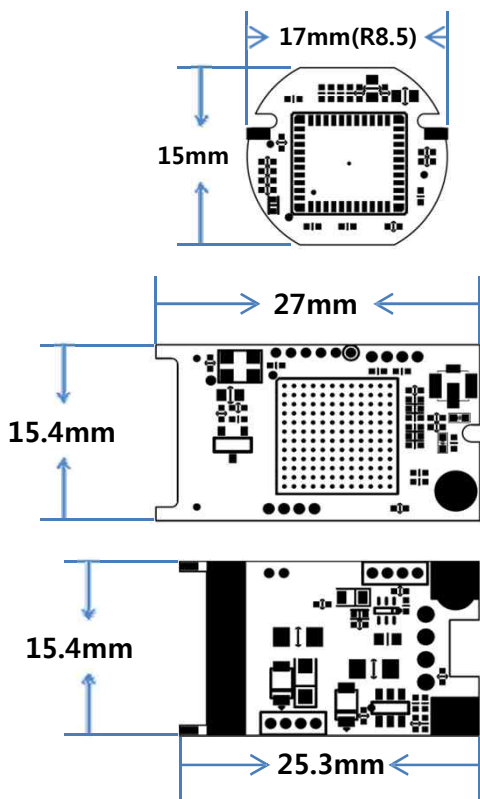
- 1/3" 2.12M(1080P) Panasonic CMOS Image Sensor
- 2Mega Pixels (1080p25/30, 720P50/60)
- Mountable Lens: Fixed/Pinhole Lens (via Housing Lens Holder)
- WDR / 3D-NR / DSS(Sens-up) Supported
- OSD Available (Option - OSD Cable)
- HD-SDI Video Out Supporting standard SMPTE protocol
- EX-SDI Vide Out Supported
- Analog Composite Video Out
- CMOS HD-SDI Video Module (17Ø and etc 3-boards)



Specifications

Model	DCC-480
Signal System	HD-SDI (Serial Data Interface) or EX-SDI
Pickup Device	1/3"(D-6mm) 2.12M Panasonic CMOS Sensor
Scanning System	Progressive Scan (16:9)
Sync. System	Internal
Total Pixels	2.22M [2010(H)x1108(V)]
Effective Pixels	2.12M [1944(H)x1092(V)]
Scanning Frequency	30Hz(VD) for NTSC out 25Hz(VD) for PAL out
Min. Illumination	0.06Lux(F2.5 – 30IRE), 0.002(DSS on)
Mechanical ICR	N/A
H-Resolution	More than 1,000TV Lines(H)
S/N Ratio	More than 50dB (AGC off)
Video Out 1	HD-SDI or EX-SDI: 1080p@25/30, 720p@50/60 From HD-SDI to EX-SDI: Left + Left + Left + Enter From EX-SDI to HD-SDI: Right + Right + Right + Enter
Video Out 2	Composite Video 1V p.p (NTSC/PAL - 75Ω)
Lens	Fixed Iris Lens
Lens (Mount)	N/A
OSD	AD type OSD Cable (Option)
Camera Title	Off, On(Max. 10 Characters)
Language	English, Chinese(Simplified), Chinese(Traditional), Japanese, Korean
Exposure	AE, Manual
White Balance	AWB, ATW, Push Lock, Manual
BLC	Off, HLC, BLC, WDR * WDR is not operated when manual shutter mode or CVBS output mode is selected.
Day & Night Mode	AUTO, COLOR, B/W
Gain Control	AGC (0~20)
Electronic Shutter	1/25(30)~1/30,000sec
Noise Reduction	3DNR (Off, Low, Middle, High)
DSS(Sens-up)	X32
Mirror	Off, On(Mirror, Flip)
Other Features	Motion Detection (4 Zones), Privacy Mask (16 Zones), Flickerless, Lens Shading, Gamma, D-zoom, Defog etc.
Power Source	DC12V
Power Consumption	Less than 1.5 Watts (120mA)
Operating Temp.	-10℃ ~ 55℃ (Humidity :0%RH ~ 90%RH)
Size (mm)	17Ø and etc. 3-Boards
Weight	5 g (Including OLPF)

Dimension



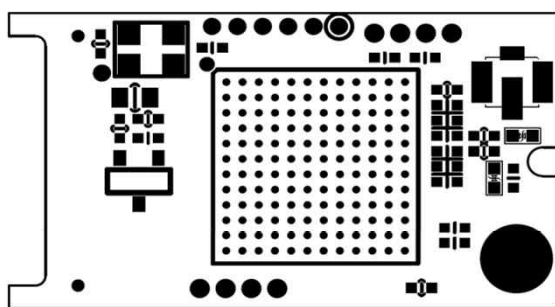
Option

- OSD Cable

DCC-480

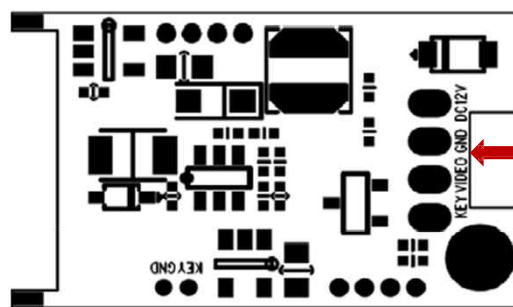
CMOS VIDEO MODULE

Pin Connections



DSP Board (TOP)

JK1



Power Board (BOTTOM)

Conn.

JK1 – HD-SDI Out - MHF

MHF SMD Connector
Part Name: 20279-001E-01
Mfg.: I-Pex

Conn. – Hand Soldering Work

- DC12V (Power Input – DC12V)
- GND (Ground)
- Video (Analog Service Video Out)
- Key (OSD AD Key port)