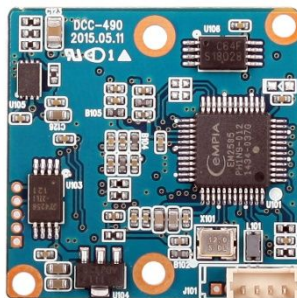
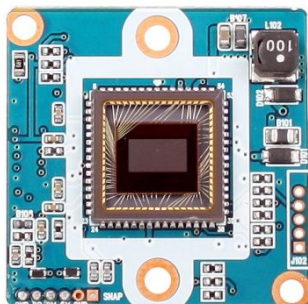


# DCC-490

## CMOS VIDEO MODULE

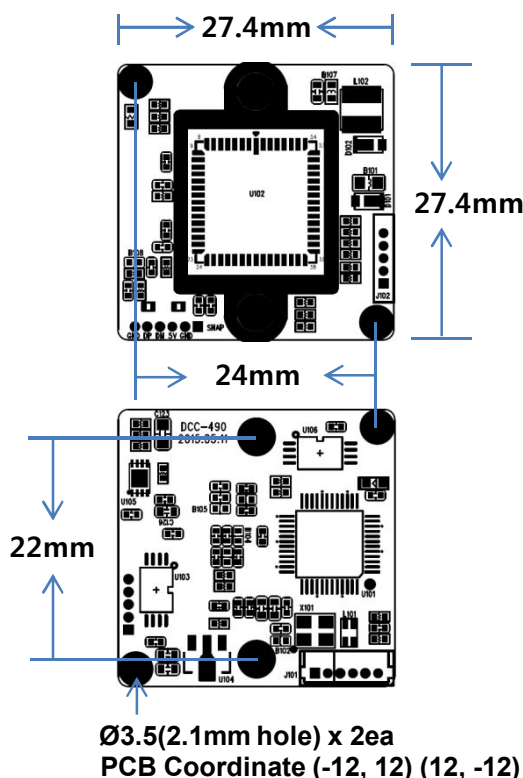


### Main Features

- 1/3" 4μm Pixel Progressive WDR CMOS Sensor
- 1Mega Pixels (Max. 720p25/30)
- Mountable Lens: Fixed, Pinhole, Manual VF Lens
- True WDR Supported
- Excellent Quality of MJPEG(MJPEG) and YUV(VGA) Videos
- USB2.0 Compliant
- Appointing unique H/W ID Available for dual cameras per PC
- Best for ATM, Kiosk, POS, Face Recognition, Gaming Applications
- Snap-shot Feature Supported (490S series)
- CMOS USB2.0 Video Module (27.4x27.4mm 1-board)



### Dimension



### Option

- Lens
- Snap-shot (DCC-490S)

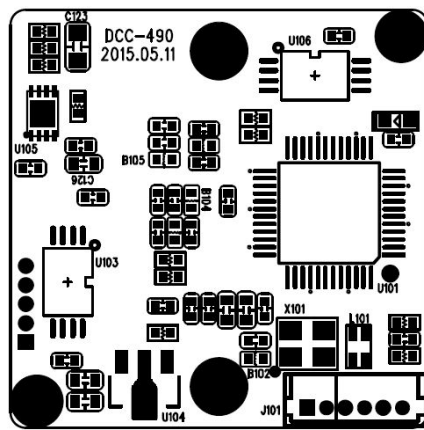
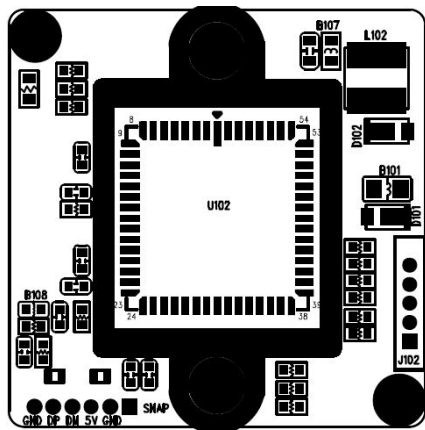
### Specifications

Model	DCC-490 / DCC-490S
Signal System	MJPEG Encoded or YUV
Pickup Device	1/3"(D-6mm) 1M 720p CMOS WDR Sensor
Scanning System	Progressive Scan (16:9)
Sync. System	Internal
Total Pixels	1.07M [1384(H)x776(V)]
Effective Pixels	0.92M [1280(H)x720(V)]
Min. Illumination	0.4Lux
Mechanical ICR	N/A
S/N Ratio	More than 39dB
Video Out	MJPEG: 720p(1280x720) or YUV: VGA(Scale Down from 1280x720 or 960x720)
Capturing Speed	25 / 30fps in both MJPEG/YUV Modes (50Hz/60Hz)
Lens	Option
Lens (Mount)	Board Mount(M12)
OSD	N/A
Exposure	Auto
White Balance	Auto
Day & Night Mode	Color (Factory Default)
Gain Control	Auto
Electronic Shutter	Auto
Mirror	Off (Factory Default)
Snap-shot	No / Yes
Supported O/S	UVC Compatible O/S - Windows (CE/XP/Vista/Win7/Win8) - Linux(2.6.26 or later), Mac, Android etc
No. of Camera ID	Up to 2 per PC
Power Source	DC5V via USB
Power Consumption	Less than 0.95 Watts (190mA@DC5V)
Operating Temp.	-10℃ ~ 55℃ (Humidity :0%RH ~ 90%RH)
Size (mm)	27.4(W) x 27.4(D) – 1 board
Weight	3.5 g (Including OLPF)

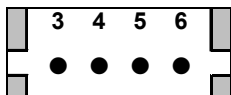
# DCC-490

## CMOS VIDEO MODULE

### Pin Connections



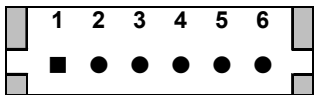
J101



No.	Pin Item	No.	Pin Item
3	DC 5V	5	DP
4	DM	6	GND

< DCC-490 >

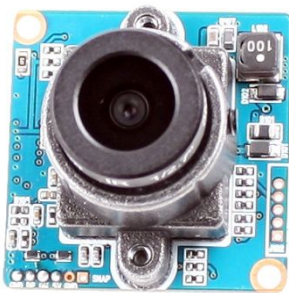
J101



No.	Pin Item	No.	Pin Item
1	SNAP SHOT (NH, Active L)	4	DM
2	GND	5	DP
3	DC 5V	6	GND

< DCC-490S >

### < DCC-F490 >



Model	Focal Length	D	H	V
DCC-F490-2.8	F=2.8, F1.8	130°	102°	75.5°
DCC-F490	f=3.6mm, F2.5	101°	80°	59°
DCC-F490-4	f=4mm, F2.5	92°	73°	54°
DCC-F490-6	f=6mm, F2.4	66.5°	53°	39.5°
DCC-F490-8	f=8mm, F2.4	55°	44°	33°
DCC-F490-12	f=12mm, F1.8	37.5°	30°	22.5°
DCC-F490-16	F=16mm, F2.0	31.5°	25°	18.5°

