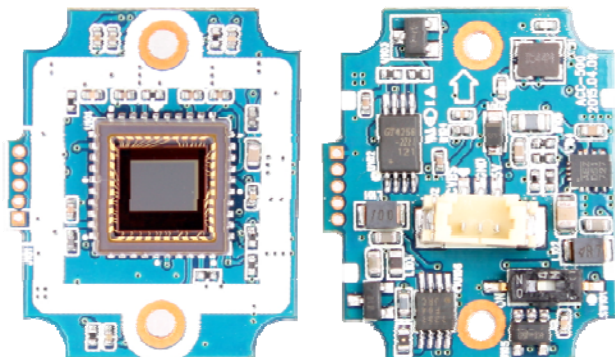


ACC-500

CMOS VIDEO MODULE

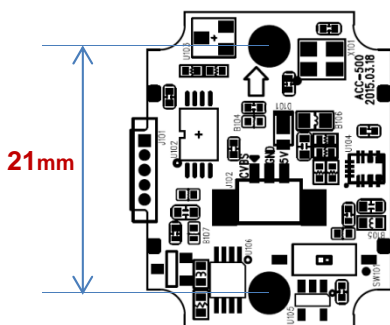
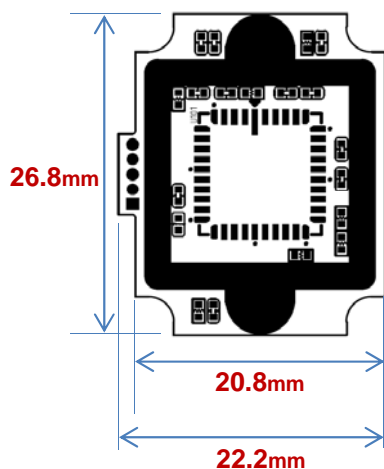


Main Features

- 1/3" 720H WDR CMOS Sensor
- Approx. 350K Pixels (550 TV Lines)
- Mountable Lens: Fixed, Pinhole, Manual VF Lens
- WDR / 2D-DNR Supported
- Operation Voltage : DC5V
- 1ch Half-pitch Slide Switch: NTSC or PAL Selectable
- CMOS Video Module



Dimension



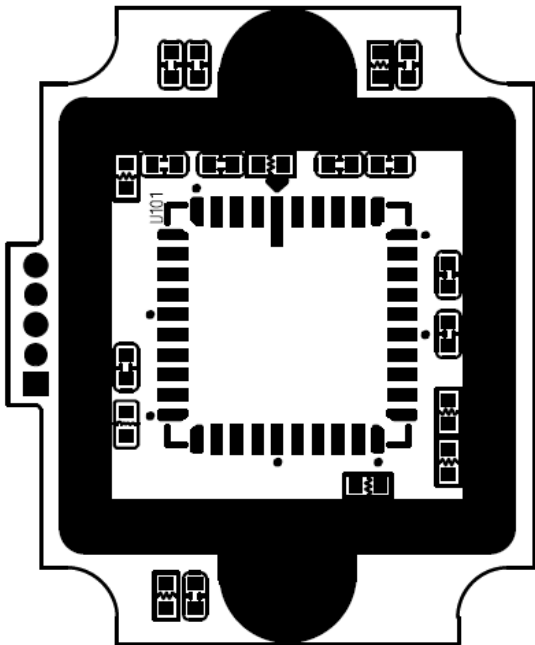
Specifications

Model	ACC-500	
Signal System	NTSC	PAL
Pickup Device	1/3"(D-6mm) 720H WDR CMOS Sensor	
Scanning System	2:1 Interlace	
Sync. System	Internal	
Total Pixels	400K [776(H)x516(V)]	
Effective Pixels	345K [720(H)x480(V)]	
Scanning Frequency	59.94Hz(VD)	50Hz(VD)
Min. Illumination	0.2Lux	
H-Resolution	Max. 550TV Lines(H)	
S/N Ratio	More than 43dB (AGC on)	
Lens	Option	
Lens (Mount)	Board Mount(M12)	
OSD	N/A	
Camera Title	N/A	
Language	N/A	
Exposure	Auto	
White Balance	Auto	
Day & Night Mode	Color (Default) / Auto (Factory Selectable)	
Gain Control	Auto	
Electronic Shutter	1/60~1/2,000sec	1/50~1/2,000sec
WDR	Yes	
DSS (Sens-up)	N/A	
Noise Reduction	2D-DNR	
Mirror	Off(Default), On(H, V, HV – Factory Selectable)	
Other Features	Parking Line (Factory Selectable)	
Signal Output	1.0 Vp-p Composite (75Ω)	
Power Source	DC5V only	
Power Consumption	Less than 0.7Watts (120mA@DC5V)	
Operating Temp.	-10℃ ~ 55℃ (Humidity :0%RH ~ 90%RH)	
Size (mm)	Approx. 26.8mm x 22.2mm (1-board)	
Weight	2.5g (Board only) 7.5 g (Including Lens Holder – 8.3T) 13.5g (Including Lens Holder – 14T)	

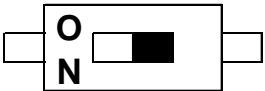
ACC-500

CMOS VIDEO MODULE

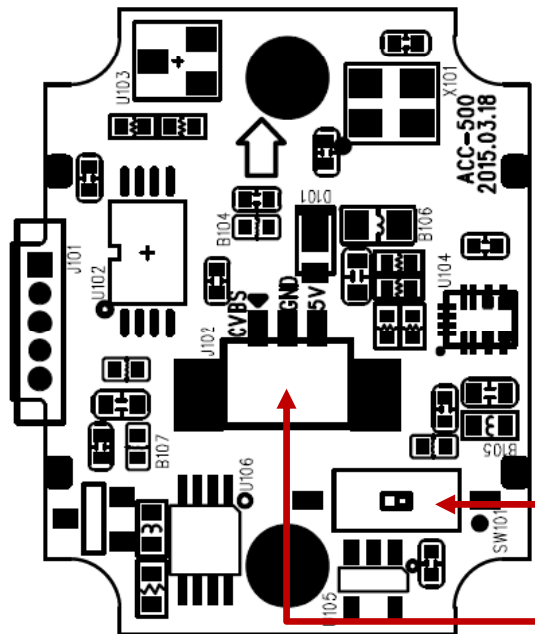
Pin Connections



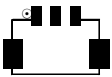
SW101



No.	Pin Item	No.	Pin Item
ON	PAL	OFF	NTSC



J102



No.	Pin Item	No.	Pin Item
1	CVBS	2	GND
3	DC5V		

Wafer Type: 1.25mm pitch – 3 pin / SMD
Manufacturer: YEONHO
MFG Part Number: 12505WS-03B

SW101

J102