

DIM-NF964-2.1(P/P2)

IP MINIATURE CAMERA

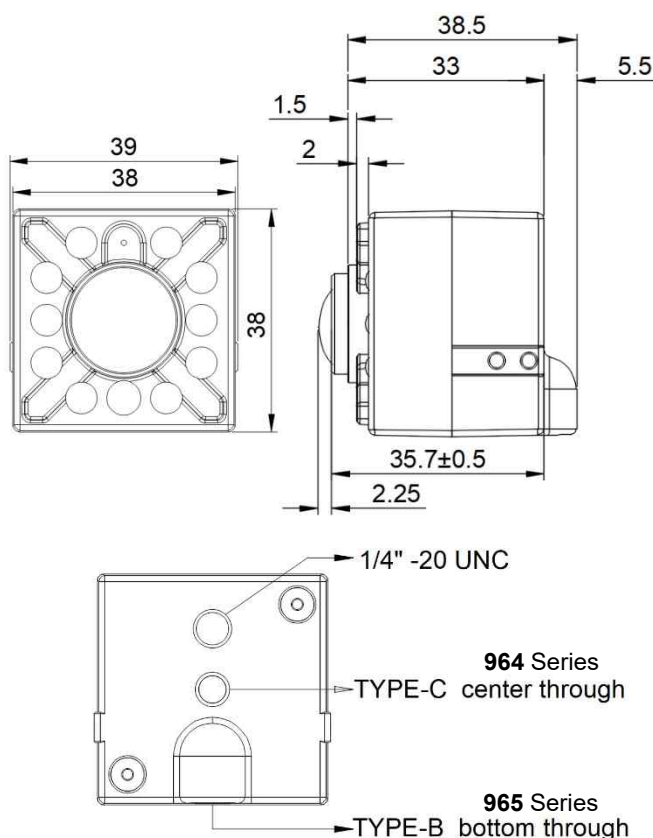


Main Features

- 1/2.8" 2.9μm Pixel Progressive Sony Starvis CMOS Sensor
- 2 Mega Pixels – Maximum 1080p (1920x1080)
- Fixed Board Lens (Non-ICR)
- 10pcs of 940nm LEDs
- WDR, DSS(Sense-up), or 3DNR Supported
- Onvif Ver. 17.06 Compatible
- Supported Video Codec: H.264, MJPEG
- Rear case with cable coming out of the center (Type-C)
- Box Miniature Housing(38x38) with U type swivel bracket



Dimension



Specifications

Model	DIM-NF964-2.1	DIM-NF964-2.1P / 2.1P2
Signal System	IP (Network) – RTOS	
Pickup Device	1/2.8"(D-6.46mm) 2.12M Sony CMOS Sensor	
Scanning System	Progressive Scan (16:9)	
Sync. System	Internal	
Total Pixels	2.16MP [1,945(H)x1,109(V)]	
Active Pixels	2.12MP [1,937(H)x1,097(V)]	
Min. Illumination	0.1Lux, 0.003Lux (DSS on), 0Lux (IR on)	
No. of IRED	10ea (940nm)	
Video Out (RJ45)	Up to 30fps @ 1920x1080p (1920x1080, 1280x720, 800x600, 704x480, 704x400, 640x480, 640x360, 320x240)	
Lens	Fixed f=2.1mm board type, F2.2	
Lens (Mount)	Board type (M12)	
Angle of View	171.5°(D), 145°(H), 79°(V)	
OSD	Via Webpage Viewer	
Camera Title	Off, On(Max. 8 Characters)	
Language	English	
White Balance	AUTO, AUTOext, Preset, Manual	
WDR	Off, On(Low, Middle, High) - 15(12) or 30(25) Output WDR can't work together with 3D-NR or DSS	
Day & Night Mode	Auto, Color, B&W	
Electronic Shutter	1/25(30)~1/30,000sec	
Noise Reduction	Off, On(Low, Middle, High) - 30(25) or 60(50) Output DNR can't work together with WDR or DSS	
DSS(Sens-up)	X32 DSS can't work together with WDR or 3D-NR	
Mirror	Off, On(Mirror, Flip)	
Other Features	Motion Detection(4 Zones), Privacy Mask(8 Zones), Defog, Gamma Etc.	
Network Protocol	TCP/IP, UDP/IP, RTP, RTSP, RTCP, NTP, HTTP DHCP, FTP, SMTP, DNS, DDNS Onvif 17.06 Compatible	
At-a-time Access	Maximum 3 users	
Video Codec	H.264, MJPEG (Duplex Streaming)	
Sensor In/Alarm Out	N/A	
Audio Line In/Out	N/A	
Power Source	DC12V	DIM-NF964-2.1P: DC12V / POE DIM-NF964-2.1P2: POE only
Power Consumption	Less than 2.4 Watts (200mA)	
Operating Temp.	-10°C ~55°C (Humidity :0%RH ~ 90%RH)	
Size (mm)	38(W) x 38(D) (without Bracket)	
Weight	144 (giftbox packing)	175 (giftbox packing)

Option

- Other focal length lenses
f=1.1(fish-eye), 2.5, 2.8, 3.3, 3.6, 4, 6, 8, 12, 16, 25mm
- Different LEDs (740nm, 940nm, White, Yellow)
- Type-B Bottom through Rear-case (965 series)
- POE / Cable Length
- Wall-mount Bracket / Tripod Mount Bracket

DIM-NF964-2.1(P/P2)

IP MINIATURE CAMERA

• IP camera connection

Connect LAN cable to RJ45 jack of camera

Connect the other end LAN cable to RJ45 jack of router or hub

If you are not using POE switcher to provide the power to the IP camera, connect regulated a DC12V power adaptor to the IP camera.

Wait for about 30 seconds until the camera initialization is completed

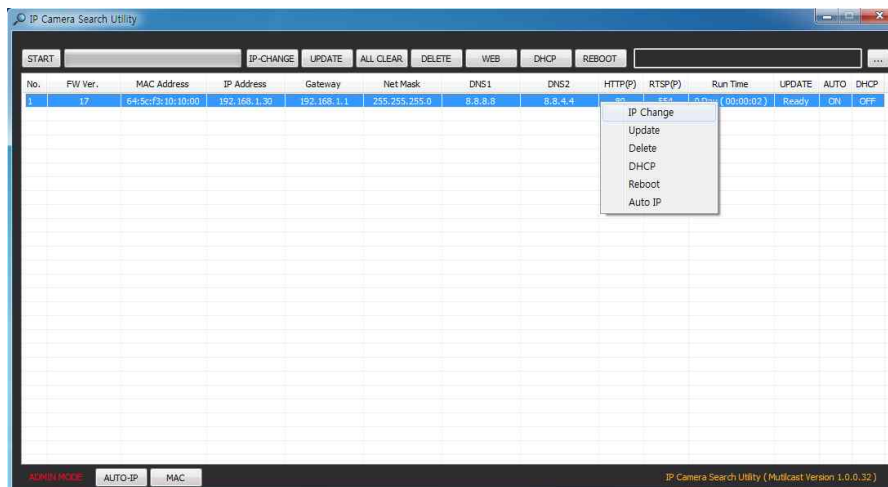
Factory Default IP address is **192.168.1.30**

Factory Default ID & Password are **admin / admin.**

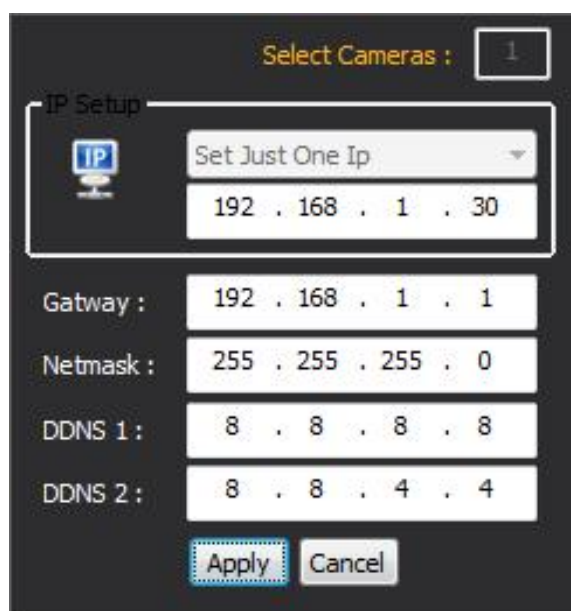
• Using IP Search

You can simply change the IP address by using 'IP Search' provided.

Run IP Search as administrator. Click "START" button when the IP camera is connected to your PC or network, all IP address will appear.



Choose & change the IP address of camera you want to change and click "IP change"



After click the "IP Change" button left window will be appeared. Once you click "Apply" button, the camera will reboot for 10second.

After reboot the camera, the changed IP address will be applied and appeared.

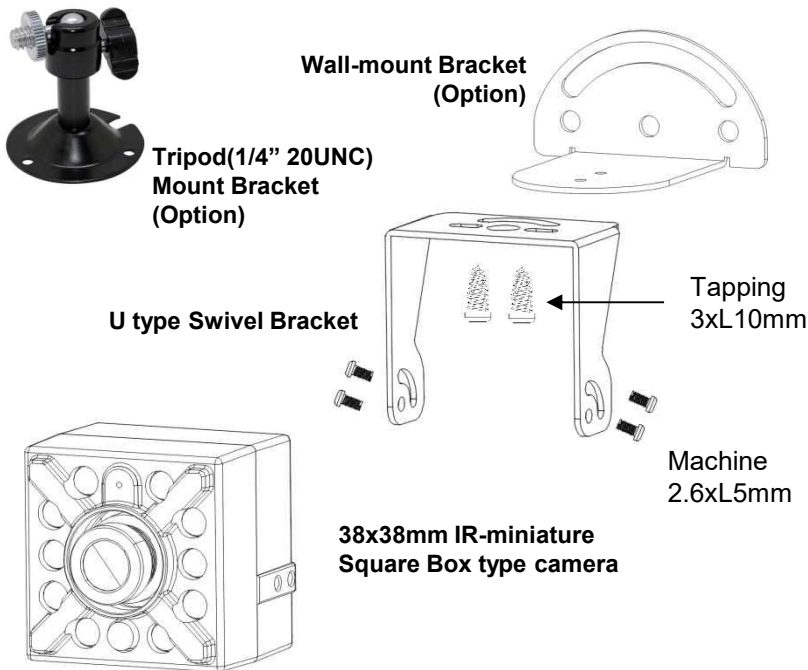
• Checking Video by Web Viewer

Run web browser and Input the IP address which taken from IP Search.

• Supported O/S & Web Browser

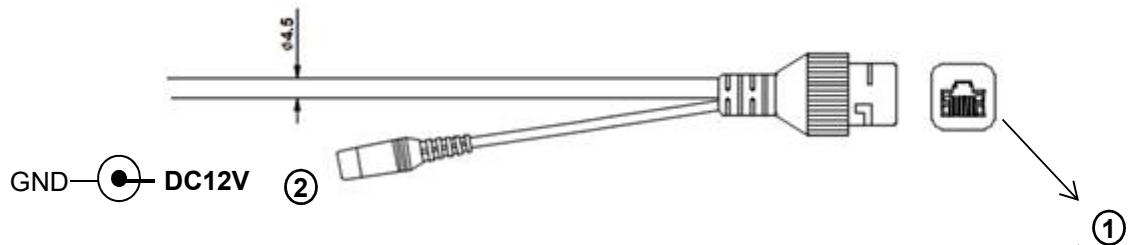
- O/S : Windows7, 8, 10, MAC
- Browser : Internet Explorer 11 or higher, Chrome , Firefox, Safari, Opera

Cable Connection Interface

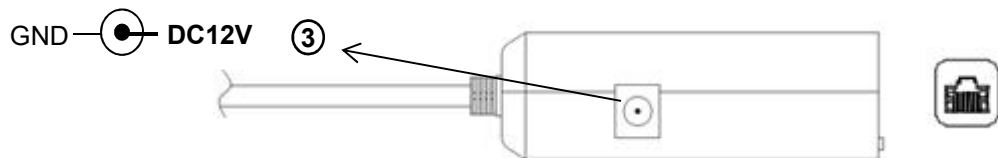


- The wall-mount bracket is optional and not included in the base package, please contact us if you require it.
- Please fix the U type swivel bracket on the structure with the tapping type 3x10mm screws provided. The camera can be fixed with the machine type 2.6x5mm screws on the left and right sides of the bracket, depending on the installation angle.
- The base bracket accessory package includes 3nos Tapping type 3xL10mm screws and 5nos Machine type 2.6x5mm screws, including spares of each screw.

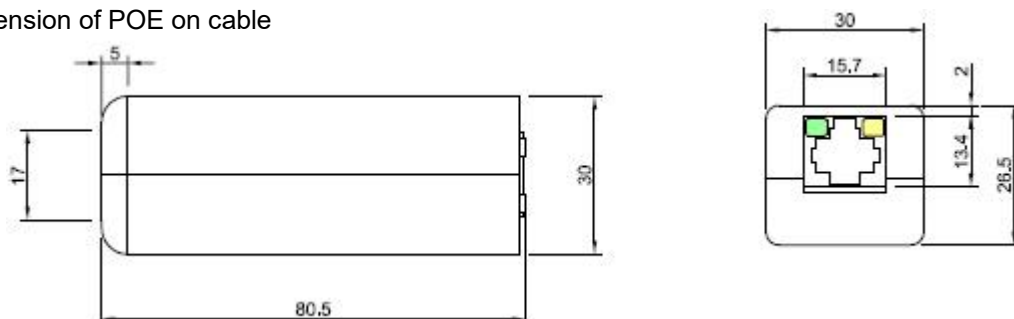
DIM-NF964-2.1



DIM-NF964-2.1P



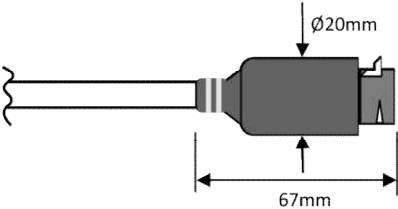
Dimension of POE on cable



	Function	I/O	Note	Remarks
①	VIDEO/POE/CONTROL	IN/OUT	H.264 video output, Power over Ethernet, Control (RJ45)	
②	POWER	IN	Camera power input (Required all the time)	DC12V
③	POWER	IN	Camera power input (Not required when POE works)	DC12V

Cable Connection Interface

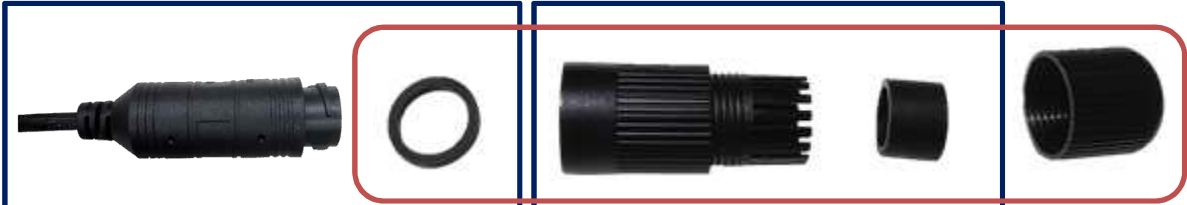
DIM-NF964-2.1P2



①

	Function	I/O	Note	Remarks
①	VIDEO/POE/CONTROL	IN/OUT	H.264 video output, Power over Ethernet, Control (RJ45)	

Water-proof RJ45 Connector/Cable Connection



RJ45 Water-proof Cap
Part No. 4000067

