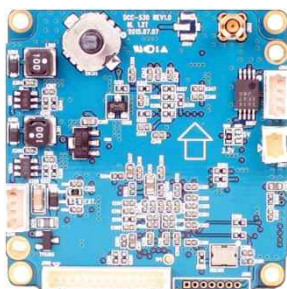
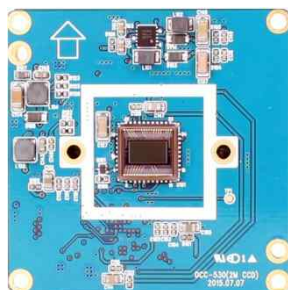


DCC-530

CCD VIDEO MODULE



Main Features

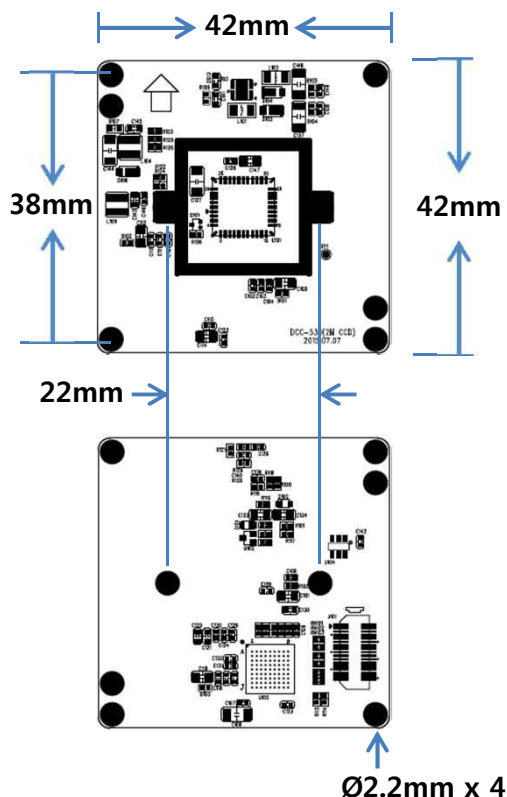
- 1/3" 2.1M(1080P) Progressive CCD Image Sensor
- 2.1Mega Pixels (1,000 TV Lines)
- Mountable Lens: Fixed, Pinhole, DC VF, DC ICR VF Lens
- ICR Mechanism Available
- 3D-NR Supported
- Built-in OSD Switch
- VD Signal & Strobe Out available
- HD-SDI Video Out Supporting standard SMPTE protocol
- CCD HD-SDI Video Module (42x42mm 2-board)



Specifications

Model	DCC-530
Signal System	HD-SDI (Serial Digital Interface)
Pickup Device	1/3"(D-6mm) 2.17M Progressive CCD
Scanning System	Progressive Scan (16:9)
Sync. System	Internal
Total Pixels	2.17M [1984(H)x1096(V)]
Effective Pixels	2.07M [1920(H)x1080(V)]
Scanning Frequency	15Hz(VD) for NTSC out 25Hz(VD) for PAL out
Min. Illumination	0.2Lux(F2.5 – 50IRE), 0.1Lux(ICR on), 0.006(DSS on)
Mechanical ICR	Available (Option)
H-Resolution	More than 1,000TV Lines(H)
S/N Ratio	More than 50dB (AGC off)
Video Out 1	Max. HD-SDI : 1080p@25
Video Out 2	Composite Video 1V p.p (NTSC/PAL - 75Ω) No CVBS out is available under HD-SDI out mode
Lens	Option
Lens (Mount)	Board Mount(M12), VF Mount(Ø14), CS Mount
OSD	Via 5-direction Tact-switch
Camera Title	Off, On(Max. 15 Characters)
Language	English only
Exposure	DC, ELC
White Balance	AWC, ATW, Hold(Push), Manual
HLC	Off, HLC, WDR(Digital) * Digital WDR is not able to operate under DC iris mode
Day & Night Mode	AUTO, COLOR, B/W, EXT
Gain Control	AGC (2~36dB)
Electronic Shutter	1/25(15), 1/50(60)~1/50,000sec
Noise Reduction	2D-NR, 3D-NR (Off, Low, Middle, High), Smart NR
DSS(Sens-up)	X30 (DSS is not able to operate under DC iris mode)
Mirror	Off, On(Mirror, Flip, Rotation)
Other Features	Privacy Mask (8 Zones), Flickerless, Lens Shading, Defog, Gamma
Communication	RS485 (Pelco-D, Parantek BP protocol) Default: 9600bps
No. of Camera ID	Up to 255
Signal Out	VD and Strobe out
Power Source	DC12V
Power Consumption	Less than 2.9 Watts (240mA)
Operating Temp.	-10℃ ~ 55℃ (Humidity :0%RH ~ 90%RH)
Size (mm)	42(W) x 42(D) – 2 board
Weight	18 g (without OLFP)

Dimension



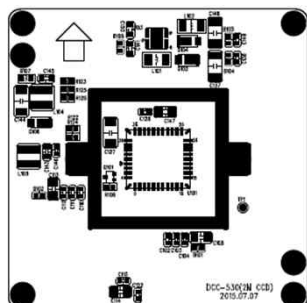
Option

- Mechanical ICR
- Lens

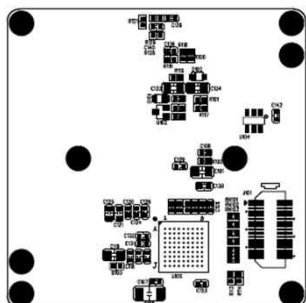
DCC-530

CCD VIDEO MODULE

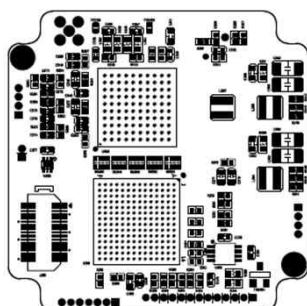
Pin Connections



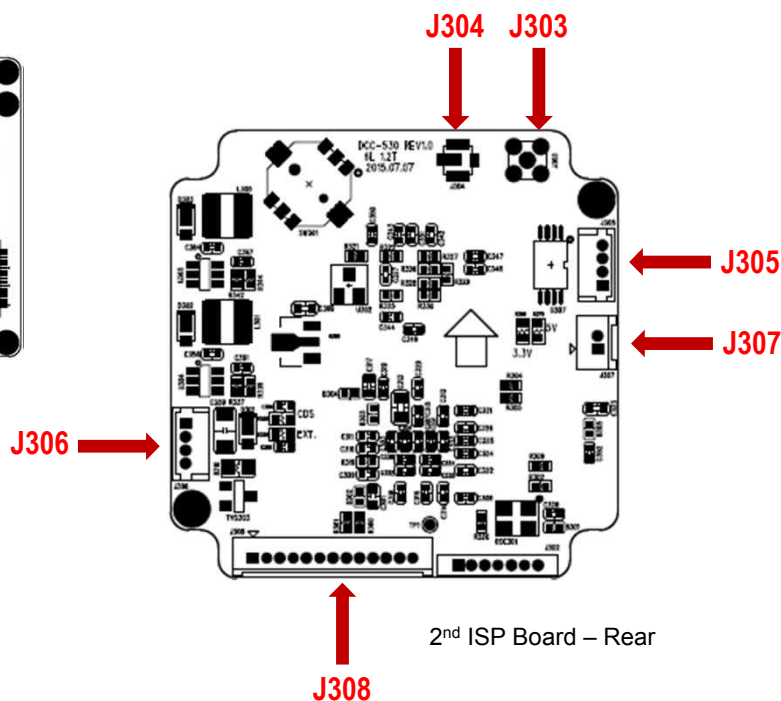
1st Sensor Board – Front



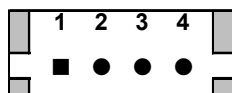
1st Sensor Board – Rear



2nd ISP Board – Front



J305 – DC IRIS



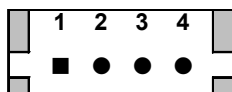
No.	Pin Item	No.	Pin Item
1	DMP+	3	DRV+
2	DMP-	4	GND

Wafer DIP type: **1.25mm pitch – 4 pin**

Manufacturer: **Molex**

MFG Part Number: **53047-0410**

J306 – IR LED Board



No.	Pin Item	No.	Pin Item
1	DC12V	3	EXT_DN (CDS)
2	GND	4	D&N OUT

Wafer DIP type: **1.25mm pitch – 4 pin**

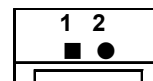
Manufacturer: **Molex**

MFG Part Number: **53047-0410**

J303 – HD-SDI Out - MMCX

J304 – HD-SDI Out - MHF

J307 – TDN ICR



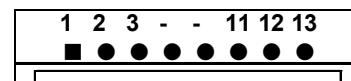
No.	Pin Item	No.	Pin Item
1	ICR (+)	2	ICR (-)

Wafer DIP type: **1.25mm pitch – 2 pin**

Manufacturer: **Yeonho**

MFG Part Number: **12512WS-02B**

J308 – User Interface



No.	Pin Item	No.	Pin Item
1	CVBS	8	RS485 TTL 3.3V TXD
2	GND	9	RS485 TTL 3.3V RXD
3	DC12V	10	RS485 TTL 3.3V CTL
4	GND	11	AD Key
5	EXT DN (B/W:High 3.3V)	12	MD-Alarm
6	VD (3.3V)	13	DC 3.3V
7	Strobe (3.3V)		

Wafer DIP type: **1.25mm pitch – 13 pin**

Manufacturer: **Yeonho**

MFG Part Number: **12512WS-13B**