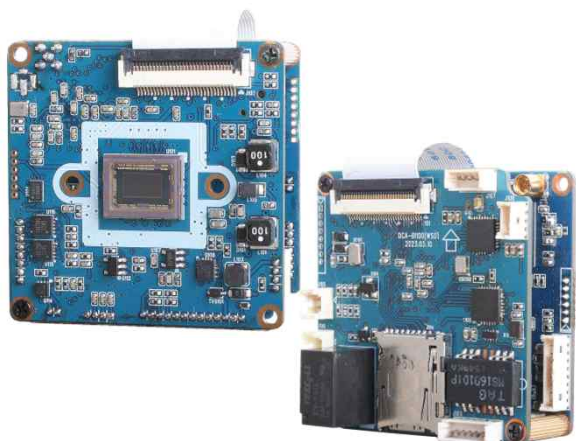


DCC-2W30 (COMBINATION OF DCC-2W0 & DCA-BI100)

PARANTEK

CMOS IP VIDEO MODULE



Main Features

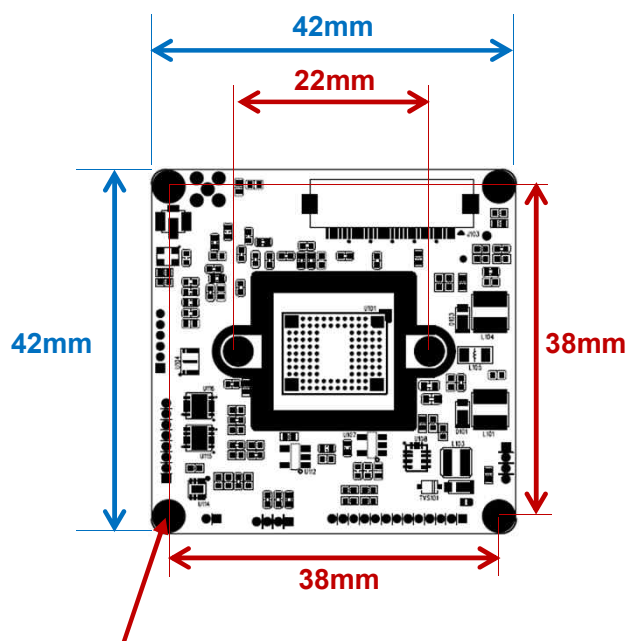
- 1/2.8" 2.9µm Pixel Progressive Sony Starvis CMOS Sensor
- 2 Mega Pixels – Maximum 1080p (1920x1080)
- Mountable Lens: Fixed & DC IRIS & AF Motorized Lens
- TDN ICR Mechanism Available
- WDR, DSS, and 3D-NR Supported
- Onvif Ver. 17.06 Compatible
- Supported Video Codec: H.264, MJPEG
- CMOS IP Video Module (42x42mm 2-boards)



Specification

Model	DCC-2W30
Signal System	IP (Network)
Pickup Device	1/2.8"(D-6.46mm) 2.12M Sony CMOS Sensor
Scanning System	Progressive Scan (16:9)
Sync. System	Internal
Total Pixels	2.16MP [1,945(H)x1,109(V)]
Active Pixels	2.12MP [1,937(H)x1,097(V)]
Min. Illumination	0.1Lux, 0.05Lux(ICR on), 0.003Lux (DSS on)
Mechanical ICR	Available (Option)
Video Out 1 (RJ45)	Up to 30fps @ 1920x1080p (1920x1080, 1280x720, 800x600, 704x480, 704x400, 640x480, 640x360, 320x240)
Video Out 2 (Option)	3G-SDI: 1080p25/30/50/60, 720p25/30/50/60, 1080i50/60
Video Out 3 (Option)	AHD, TVI, CVI or Analog CVBS
Lens	AHD, TVI and CVI: 1080p@25/30 / Analog CVBS: D1
Lens (Mount)	Option (Fixed & DC Auto IRIS & AF Stepping Motor Lens)
OSD	Board/Pinhole Mount(M12), VF (Ø14) & C/CS Mount
Camera Title	Via Webpage Viewer
Language	Off, On(Max. 8 Characters)
White Balance	English
BLC	AUTO, AUTOext, Preset, Manual
Day & Night Mode	Off, BLC, HLC, WDR(Low, Middle, High)
Electronic Shutter	Auto, Color, B&W, Ext.
Noise Reduction	1/25(30)~1/30,000sec
DSS(Sense-up)	Off, On(Low, Middle, High)
Mirror	X32
Other Features	Off, On(Mirror, Flip, Rotation)
Network Protocol	Motion Detection (4 Zones), Privacy Mask (16 Zones), ACE, D-Zoom, Defog, DIS, Freeze, Gamma, Shading etc.
At-a-time Access	TCP/IP, UDP/IP, RTP, RTSP, RTCP, NTP, HTTP
Video Codec	DHCP, FTP, SMTP, DNS, DDNS
Sensor In/Alarm Out	Onvif 17.06 Compatible
Audio Line In/Out	Maximum 3 users
SD Memory Card Slot	H.264, MJPEG (Duplex Streaming)
Power Source	2/1
Power Consumption	1/1
Operating Temp.	Yes
Size (mm)	DC12V / POE
Weight	Less than 5 Watts (320mA,410mA with AF Lens)
	-10℃ ~ 55℃ (Humidity :0%RH ~ 90%RH)
	42(W) x 42(D) – 2 Boards
	22 g (Including standoffs)

Dimension



Ø3.8(2.1mm hole x 4)

PCB Coordinate

(-19, 19) (19, -19)

(19, 19) (-19, -19)

PCB T=1.2mm

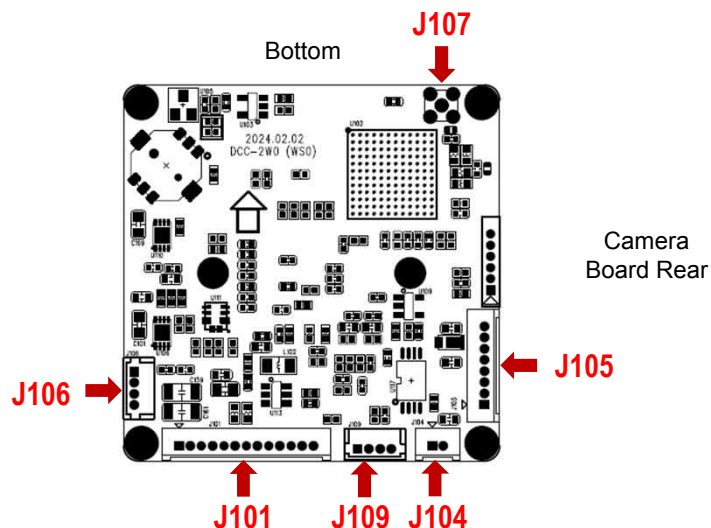
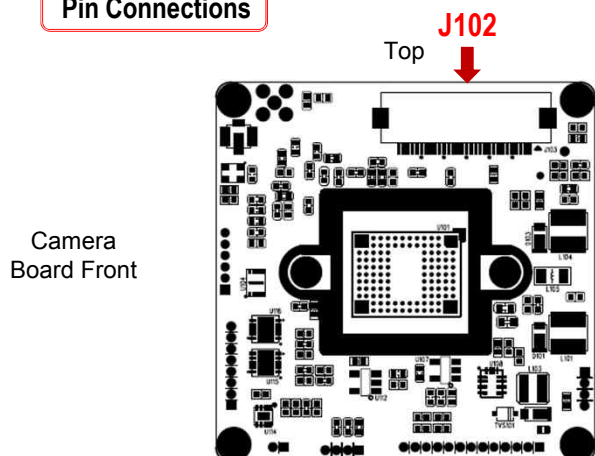
Option

- Lens
- TDN ICR
- Standoffs
 - Female ends (8mm, 9.5mm, 11mm)
 - Male / Female (8, 9, 10, 10.5, 11, 12, 12.5mm)

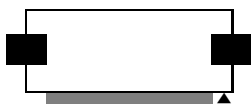
DCC-2W30 (COMBINATION OF DCC-2W0 & DCA-BI100)

CMOS IP VIDEO MODULE

Pin Connections



J102 – BT.1120 & Etc.



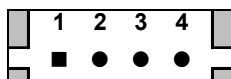
No.	Pin Item	No.	Pin Item
1	RXD	16	Y4
2	TXD	17	Y5
3	NC	18	Y6
4	NC	19	Y7
5	VCC (7~15V)	20	GND
6	VCC (7~15V)	21	PIXEL CLOCK
7	VCC (7~15V)	22	GND
8	GND	23	C0
9	GPIO	24	C1
10	nRESET IN (Camera Reset)	25	C2
11	GND	26	C3
12	Y0	27	C4
13	Y1	28	C5
14	Y2	29	C6
15	Y3	30	C7

Wafer SMD type: 0.5mm pitch – 30 pin

Manufacturer: Yeonho

MFG Part Number: 05002HR-H30J05

J109 – DC IRIS



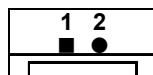
No.	Pin Item	No.	Pin Item
1	DAMP +	3	DRV +
2	DAMP -	4	DRV -

Wafer DIP type: 1.25mm pitch – 4 pin

Manufacturer: Molex

MFG Part Number: 53047-0410

J104 – TDN ICR



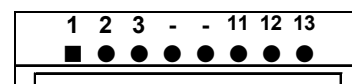
No.	Pin Item	No.	Pin Item
1	ICR (+)	2	ICR (-)

Wafer DIP type: 1.25mm pitch – 2 pin

Manufacturer: Yeonho

MFG Part Number: 12512WS-02B

J101 – User Interface



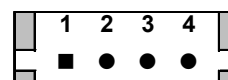
No.	Pin Item	No.	Pin Item
1	CVBS Out	8	Key RIGHT
2	GND	9	Key LEFT
3	DC12V In	10	TXD Out (3.3V TTL)
4	GND	11	RXD In (3.3V TTL)
5	Key DOWN	12	GND
6	Key UP	13	DC3.3V Out
7	Key SET (AD Key)		

Wafer DIP type: 1.25mm pitch – 13 pin

Manufacturer: Yeonho

MFG Part Number: 12512WS-13B

J106 – LED



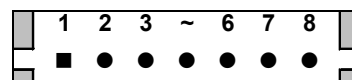
No.	Pin Item	No.	Pin Item
1	LED VCC	3	EXT_DN
2	GND	4	LED_CTL

Wafer DIP type: 1.25mm pitch – 4 pin

Manufacturer: Molex

MFG Part Number: 53047-0410

J105 – Motor Control



No.	Pin Item	No.	Pin Item
1	FOCUS A-	5	ZOOM B+
2	FOCUS A+	6	ZOOM B-
3	ZOOM A-	7	FOCUS B-
4	ZOOM A+	8	FOCUS B+

Wafer DIP type: 1.25mm pitch – 8 pin

Manufacturer: Molex

MFG Part Number: 53047-0810

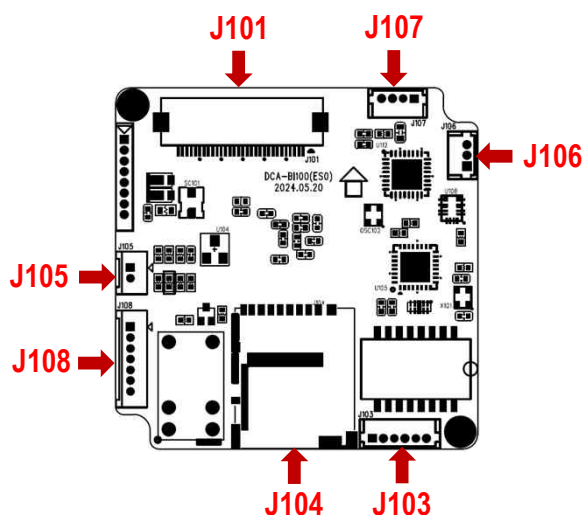
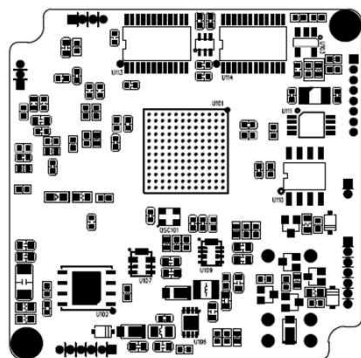
J107 – MMCX for SDI Output

DCC-2W30 (COMBINATION OF DCC-2W0 & DCA-BI100)

CMOS IP VIDEO MODULE

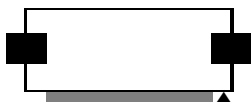
Pin Connections

Encoder Board Front



Encoder Board Rear

J102 – BT.1120 & Etc.



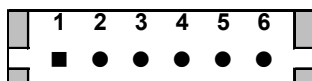
No.	Pin Item	No.	Pin Item
1	C7 (In)	16	Y3 (In)
2	C6 (In)	17	Y2 (In)
3	C5 (In)	18	Y1 (In)
4	C4 (In)	19	Y0 (In)
5	C3 (In)	20	GND
6	C2 (In)	21	nRESET (Out) Camera Reset
7	C1 (In)	22	GPIO (In)
8	C0 (In)	23	GND
9	GND	24	DC12V (Out)
10	PIXEL CLOCK	25	DC12V (Out)
11	GND	26	DC12V (Out)
12	Y7 (In)	27	Reserved
13	Y6 (In)	28	Reserved
14	Y5 (In)	29	RXD (In)
15	Y4 (In)	30	TXD (Out)

Wafer SMD type: 0.5mm pitch – 30 pin

Manufacturer: Yeonho

MFG Part Number: 05002HR-H30J05

J103 – Ethernet



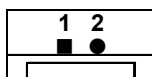
No.	Pin Item	No.	Pin Item
1	DC 12V	4	RXD + (Ethernet)
2	GND	5	TXD – (Ethernet)
3	RXD – (Ethernet)	6	TXD + (Ethernet)

Wafer DIP type: 1.25mm pitch – 6 pin

Manufacturer: Molex

MFG Part Number: 53047-0610

J105 – RS485



No.	Pin Item	No.	Pin Item
1	RS485 (+)	2	RS485 (-)

Wafer DIP type: 1.25mm pitch – 2 pin

Manufacturer: Yeonho

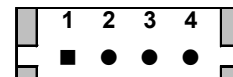
MFG Part Number: 12512WS-02B

J104 – SD Card Slot

Manufacturer: Hirose

MFG Part Number: DM3AT-SF-PEJM5(21)

J107 – Audio



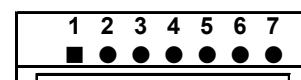
No.	Pin Item	No.	Pin Item
1	LINE IN	3	LINE OUT
2	GND	4	GND

Wafer DIP type: 1.25mm pitch – 4 pin

Manufacturer: Molex

MFG Part Number: 53047-0410

J108 – ALARM IN/OUT



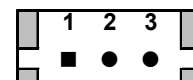
No.	Pin Item	No.	Pin Item
1	N/O (Normal Open)	5	GND
2	N/C (Normal Close)	6	ALARM 2 IN
3	COM (Common)	7	GND
4	ALARM 1 IN		

Wafer DIP type: 1.25mm pitch – 7 pin

Manufacturer: Yeonho

MFG Part Number: 12512WS-07B

J106 – Reset



No.	Pin Item	No.	Pin Item
1	Factory Default	3	GND
2	SW_Reset		

Wafer DIP type: 1.25mm pitch – 3 pin

Manufacturer: Molex

MFG Part Number: 53047-0310

CMOS IP VIDEO MODULE

• IP camera connection

Connect LAN cable to RJ45 jack of camera

Connect the other end LAN cable to RJ45 jack of router or hub

If you are not using POE switcher to provide the power to the IP camera, connect regulated a DC12V power adaptor to the IP camera.

Wait for about 30 seconds until the camera initialization is completed

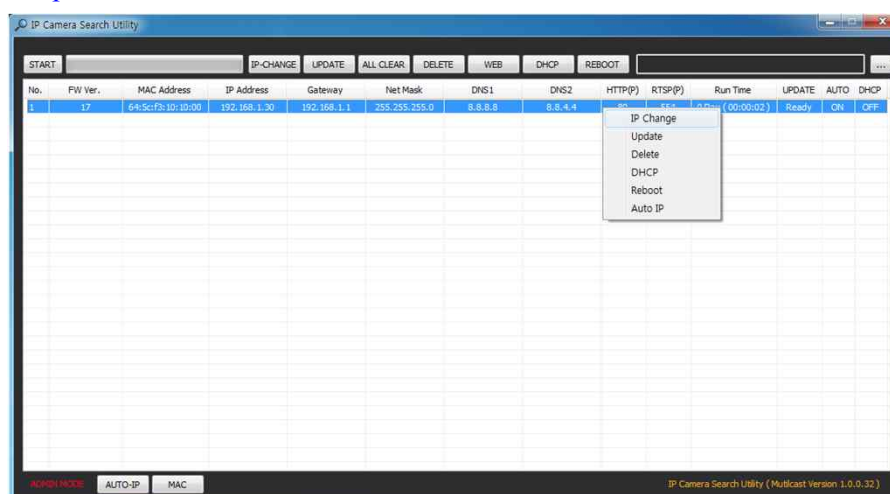
Factory Default IP address is **192.168.1.30**

Factory Default ID & Password are **admin / admin**.

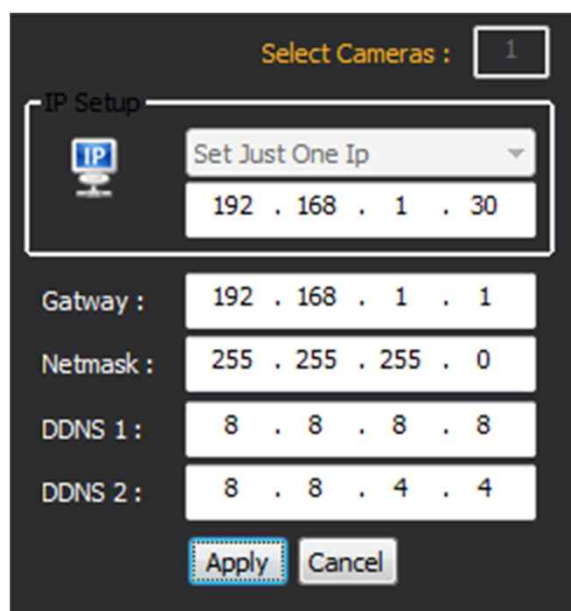
• Using IP Cam Search

You can simply change the IP address by using 'IP Cam Search' provided.

Run IP Cam Search as administrator. Click "START" button when the IP camera is connected to your PC or network, all IP address will appear. This program can be downloaded from the SUPPORT section of our web site at www.parantek.com.



Choose & change the IP address of camera you want to change and click "IP change"



After click the "IP Change" button left window will be appeared. Once you click "Apply" button, the camera will reboot for 10second.

After reboot the camera, the changed IP address will be applied and appeared.

• Checking Video by Web Viewer

Run web browser and Input the IP address which taken from IP Search.

• Supported O/S & Web Browser

- O/S : Windows7, 8, 10, MAC
- Browser : Internet Explorer 11 or higher, Chrome , Firefox, Safari, Opera