

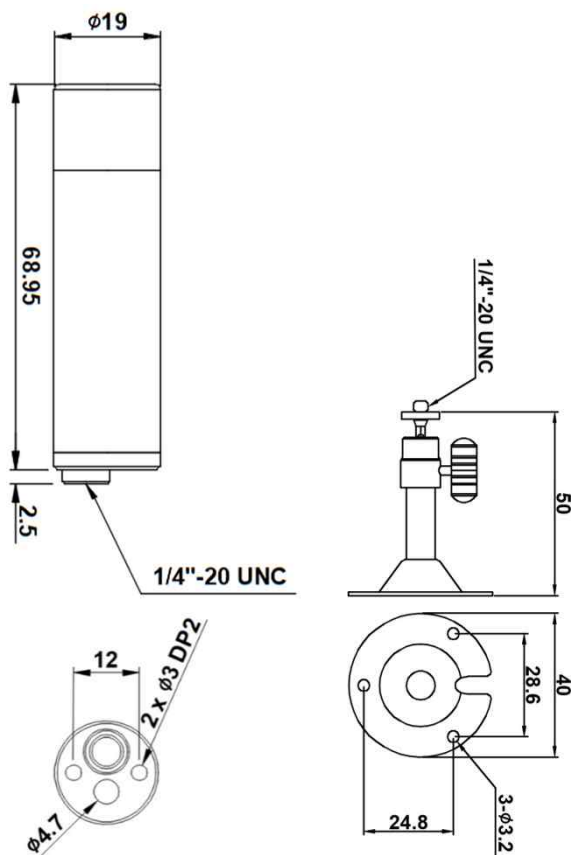
# DIB-F1H2-3.6(IL) 0.5

PARANTEK

## IP MINI BULLET CAMERA



### Dimension



### Option

- Lens (Fixed)  
f=4mm, 8mm

### Main Features

- 1/2.8" 2.9μm Pixel Progressive Sony Starvis CMOS Sensor
- 2 Mega Pixels – Maximum 1080p (1920x1080)
- Fixed Board Lens (f=3.6mm)
- WDR, DSS(Sense-up), or 3DNR Supported
- Onvif Ver. 17.06 Compatible
- Supported Video Codec: H.264, MJPEG
- M12 connector without POE (DC5~12V Ver.)
- Bullet Miniature Water-proof Housing(19Ø)



### Specifications

Model	DIB-F1H2-3.6(IL) 0.5
Signal System	IP (Network) – RTOS
Pickup Device	<b>1/2.8\"(D-6.46mm) 2.12M Sony CMOS Sensor</b>
Scanning System	Progressive Scan (16:9 )
Sync. System	Internal
Total Pixels	2.16MP [1,945(H)x1,109(V)]
Active Pixels	2.12MP [1,937(H)x1,097(V)]
Min. Illumination	0.1Lux, 0.003Lux (DSS on)
Mechanical ICR	N/A
Video Out (RJ45)	<b>Up to 30fps @ 1920x1080p</b> (1920x1080, 1280x720, 800x600, 704x480, 704x400, 640x480, 640x360, 320x240)
Lens	<b>Fixed f=3.6mm board type, F2.0</b>
Lens (Mount)	Board Mount(M12)
Angle of View	107.5°(D), 90.5°(H), 51.5°(V)
OSD	Via Webpage Viewer
Camera Title	Off, On(Max. 8 Characters)
Language	English
White Balance	AUTO, AUTOext, Preset, Manual
WDR	Off, On(Low, Middle, High) - 15(12) or 30(25) Output WDR can't work together with 3D-NR or DSS
Day & Night Mode	Auto, Color, B&W
Electronic Shutter	1/25(30)~1/30,000sec
Noise Reduction	Off, On(Low, Middle, High) - 30(25) or 60(50) Output DNR can't work together with WDR or DSS
DSS(Sense-up)	X32 (DSS can't work together with WDR or 3D-NR)
Mirror	Off, On(Mirror, Flip)
Other Features	Motion Detection(4 Zones), Privacy Mask(8 Zones), Defog. Gamma Etc.
Network Protocol	TCP/IP, UDP/IP, RTP, RTSP, RTCP, NTP, HTTP DHCP, FTP, SMTP, DNS, DDNS Onvif 17.06 Compatible
At-a-time Access	Maximum 3 users
Video Codec	H.264, MJPEG (Duplex Streaming)
Sensor In/Alarm Out	N/A
Audio Line In/Out	N/A
Power Source	<b>DC 5~12V</b>
Power Consumption	Less than 1.6 Watts (130mA)
Operating Temp.	-10℃ ~ 55℃ (Humidity :0%RH ~ 90%RH)
Size (mm)	<b>19Ø (Bullet Diameter) x 71.45(L)</b>
Weight	113 g (Gift-box packing)

# DIB-F1H2-3.6(IL) 0.5

## IP MINI BULLET CAMERA

### • IP camera connection

Connect LAN cable to RJ45 jack of camera

Connect the other end LAN cable to RJ45 jack of router or hub

If you are not using POE switcher to provide the power to the IP camera, connect regulated a DC12V power adaptor to the IP camera.

Wait for about 30 seconds until the camera initialization is completed

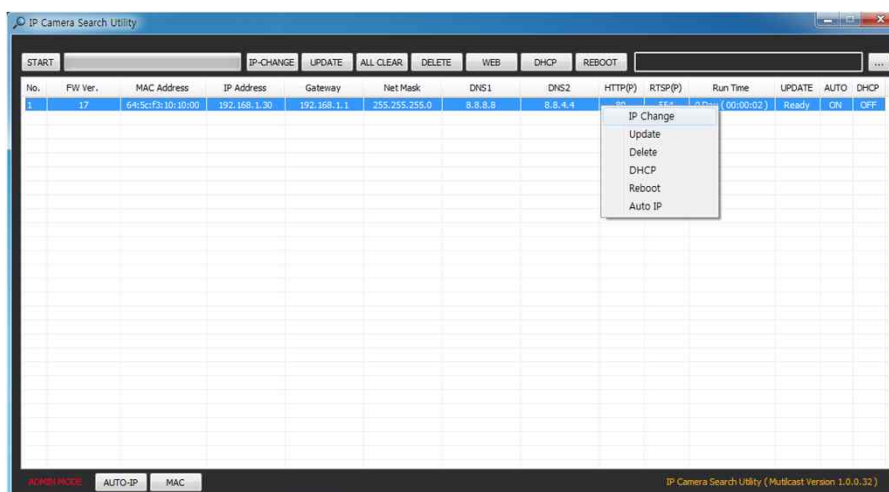
Factory Default IP address is **192.168.1.30**

Factory Default ID & Password are **admin / admin.**

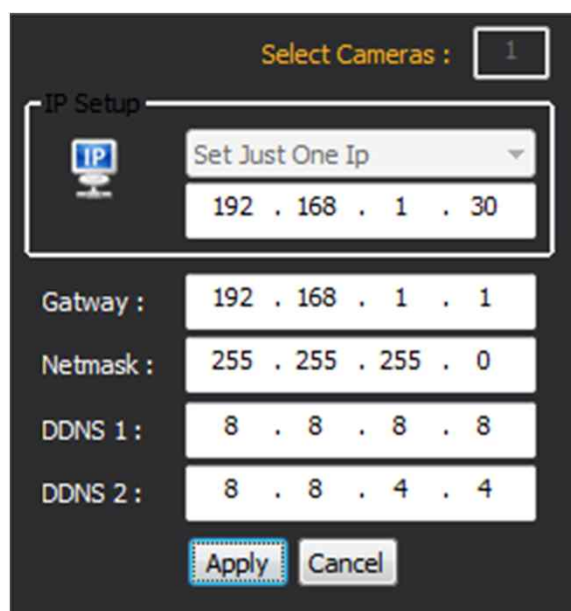
### • Using IP Cam Search

You can simply change the IP address by using 'IP Cam Search' provided.

Run IP Cam Search as administrator. Click "START" button when the IP camera is connected to your PC or network, all IP address will appear. This program can be downloaded from the SUPPORT section of our web site at [www.parantek.com](http://www.parantek.com).



Choose & change the IP address of camera you want to change and click "IP change"



After click the "IP Change" button left window will be appeared. Once you click "Apply" button, the camera will reboot for 10second.

After reboot the camera, the changed IP address will be applied and appeared.

### • Checking Video by Web Viewer

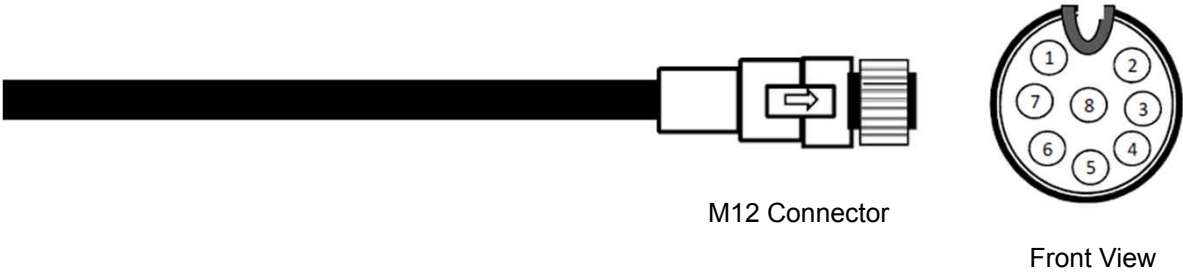
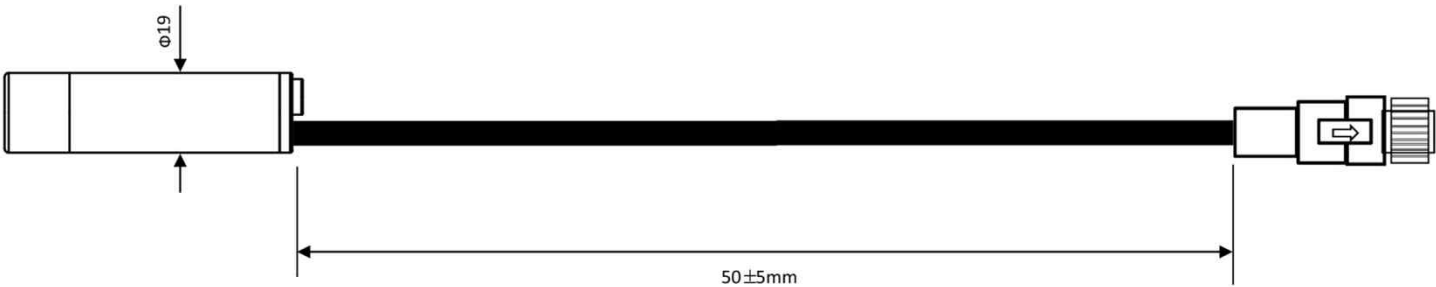
Run web browser and Input the IP address which taken from IP Search.

### • Supported O/S & Web Browser

- O/S : Windows7, 8, 10, MAC
- Browser : Internet Explorer 11 or higher, Chrome , Firefox, Safari, Opera

# Cable Connection Interface

DIB-F1H2-3.6(IL) 0.5



	Function	Remarks
①	GND	PWR GND
②	-	
③	-	
④	TX-	Non-PoE
⑤	RX+	Non-PoE
⑥	TX+	Non-PoE
⑦	DC 12V	PWR In
⑧	RX-	Non-PoE