

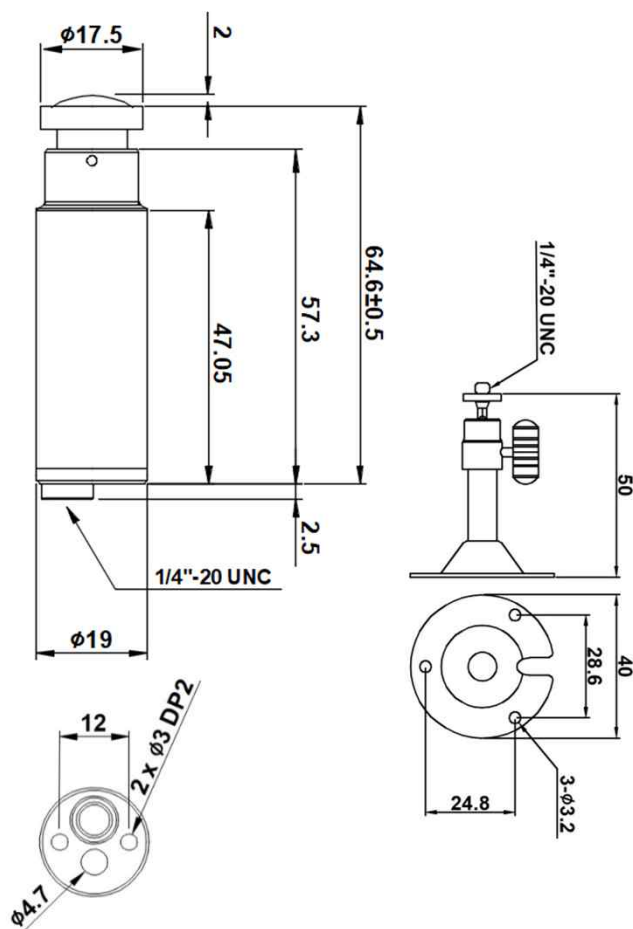
DCB-F1G60-2.5(O/R/OR)

PARANTEK

3G-SDI MINIATURE CAMERA



Dimension



Option

- Lens (Fixed)
f=1.1mm(Fish-eye 180°), 1.7mm, 2.1mm, 2.8mm, 3.3mm, 3.6mm, 4mm, 6mm, 8mm, 12mm, 16mm, 25mm
- 3G-SDI
DCB-F1G0-2.5(O/R/OR): HD-SDI

Main Features

- 1/2.8" Sony 2.9μm Pixel Progressive Starvis Color CMOS Sensor
- Approx. 2.12 Mega Pixels (Max. 1080p)
- Fixed Board Lens
- WDR / 3D-DNR / DSS (Sens-up) Supported
- Built-in OSD & RS-485 Terminal Block Cable
- HD-SDI and EX-SDI Video Output Supported
- Pelco-D and Parantek Serial Protocol Supported (RS485 Control)
- CVBS or AHD, TVI, CVI Video Out can be selectable
- Bullet Miniature Housing(19Ø)

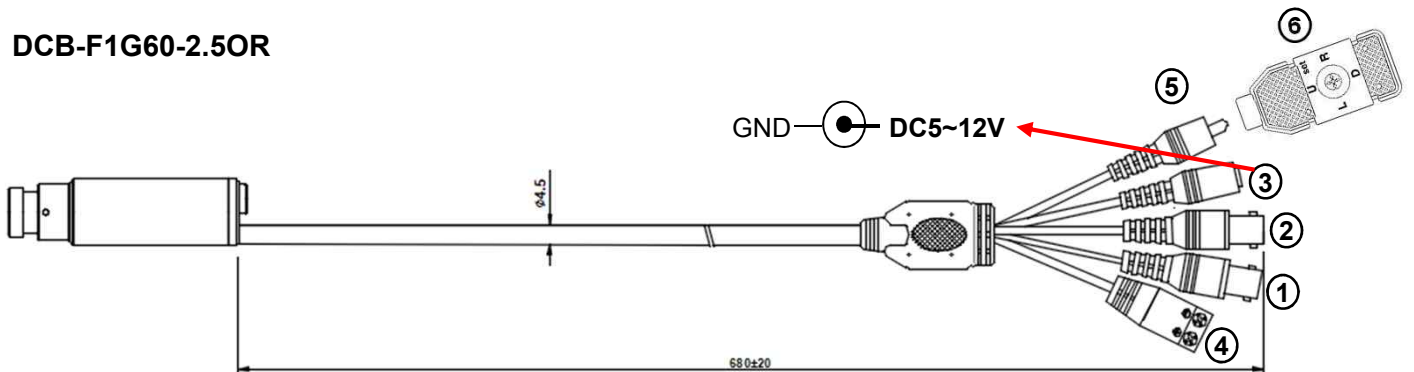


Specifications

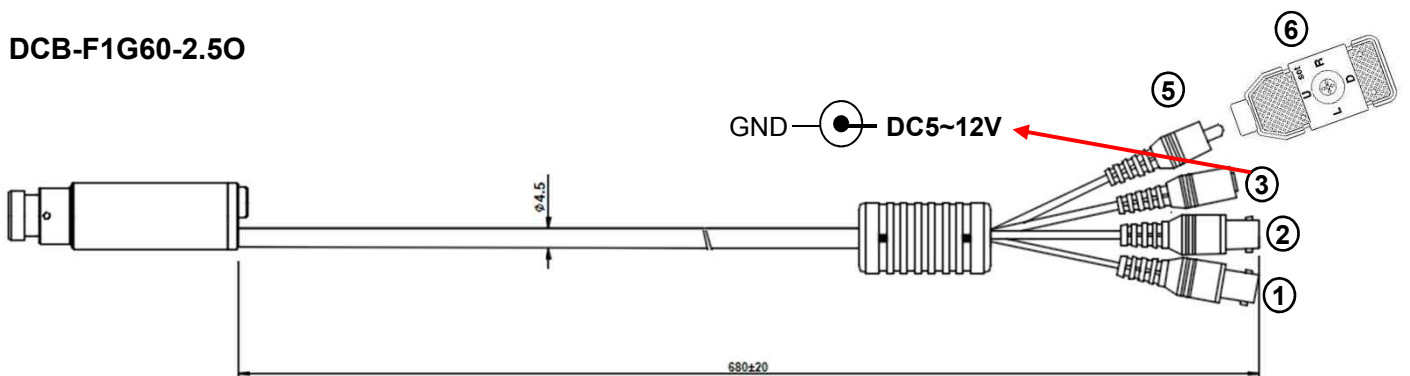
| Model | DCB-F1G60-2.5(O/R/OR) |
|--------------------|--|
| Signal System | HD-SDI (Serial Data Interface) |
| Pickup Device | 1/2.8"(D-6.46mm) 2.12M Sony CMOS Sensor |
| Scanning System | Progressive Scan (16:9) |
| Sync. System | Internal |
| Total Pixels | 2.16MP [1,945(H)x1,109(V)] |
| Active Pixels | 2.12MP [1,937(H)x1,097(V)] |
| Min. Illumination | 0.01Lux(F2.5 - 30IRE), 0.0003Lux(DSS on) |
| Mechanical ICR | N/A |
| Video Out (1) | 3G-SDI: 1080p25/30/50/60, 720p25/30/50/60, 1080i50/60 EX-SDI: 1080p25/30/50/60, 720p25/30/50/60, 1080i50/60 |
| Video Out (2) | Analog CVBS or AHD, TVI, CVI AHD, TVI and CVI: 1080p@25/30 / Analog CVBS: D1 |
| Lens | Fixed f=2.5mm board type, F2.5 |
| Lens (Mount) | Board type (M12) |
| Angle of View | 143°(D), 120.5°(H), 66°(V) |
| OSD | Via Optional OSD Switch, Serial Communication Port (with Terminal Block) |
| Camera Title | Off, On(Max. 8 Characters) |
| Language | English, Chinese(Simplified), Chinese(Traditional), Japanese, Korean |
| Exposure | AE, Manual |
| White Balance | AUTO, AUTOext, Preset, Manual |
| BLC | Off, HLC, BLC, WDR |
| Day & Night Mode | AUTO, COLOR, B/W |
| Gain Control | AGC (0~10) |
| Electronic Shutter | Auto, Manual, Flickerless |
| DSS(Sens-up) | X32 |
| Noise Reduction | 3DNR (Off, Low, Middle, High) |
| Mirror | Off, On(Mirror, Flip, Rotation) |
| Other Features | Motion Detection (4 Zones), Privacy Mask (16 Zones), ACE, D-Zoom, Defog, DIS, Gamma, Shading etc. |
| Communication | Pelco-D and Parantek Serial Protocol Supported RS-485 (Default: 9600bps, ID1) |
| Microphone | N/A |
| Power Source | DC 5~12V |
| Power Consumption | Less than 1.7 Watts (140mA@DC12V) |
| Operating Temp. | -10℃ ~ 55℃ (Humidity :0%RH ~ 90%RH) |
| Size (mm) | 19Ø (Bullet Diameter) |
| Weight | DCB-F1G60-2.5OR: 168g / DCB-F1G60-2.5O: 164g DCB-F1G60-R: 158g / DCB-F1G60-2.5: 154g |

Cable Connection Interface

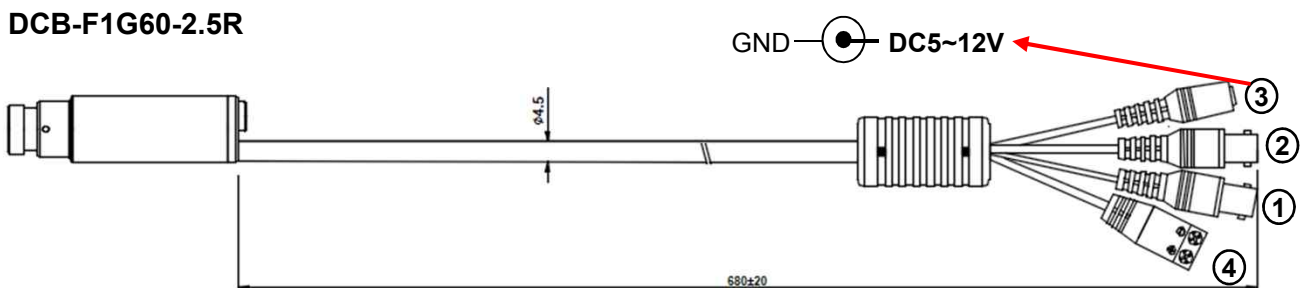
DCB-F1G60-2.5OR



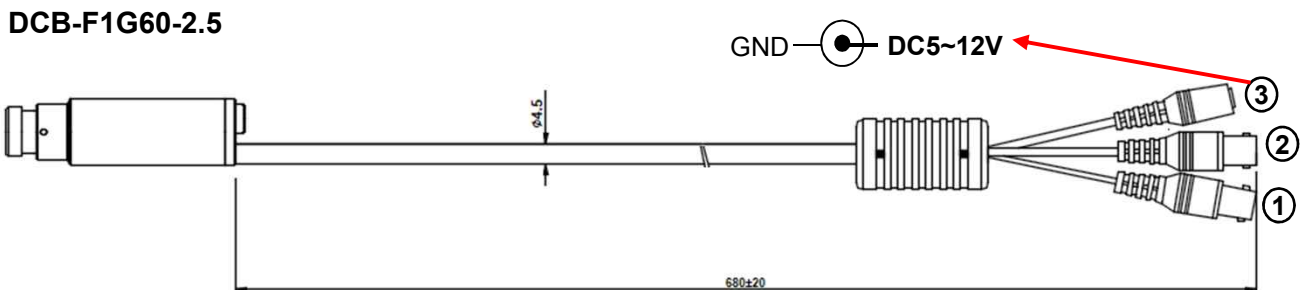
DCB-F1G60-2.5O



DCB-F1G60-2.5R



DCB-F1G60-2.5



| | Function | | Function |
|---|-------------------------|---|-----------------------------------|
| ① | BNC - SDI Out | ② | BNC – CVBS Analog Out |
| ③ | DC 3.5phi – DC Power In | ④ | 2pin Terminal Block – RS485 (+/-) |
| ⑤ | DC 2.5phi – AD OSD port | ⑥ | AD type OSD Joystick |

| SETUP MENU | SUB MENU 1 | SUB MENU 2 | SUB MENU 3 | VALUE |
|------------|------------|------------|------------|--|
| EXPOSURE | BRIGHTNESS | | | 0 ~ 20 (10) |
| | SHUTTER | AUTO | | NORMAL /DEBLUR |
| | | MANUAL | | NTSC : 1/30 ,60,120,250,500,1K,2K,4K,8K,15K,30K PAL : 1/25 ,50,100,200,400,800,1.6K,3.2K,6.4K,12.8K,25.6K |
| | | FLICKER | | |
| | SENS-UP | | | OFF / X2/ X4/ X8 / X16 / X32 |
| | AGC | | | 0 ~ 10 (8) |
| BACKLIGHT | OFF | | | |
| | HLC | LEVEL | | 0 ~ 20 (10) |
| | | COLOR | | BLK ,WHT,YEL,CYN,GRN,MAG,RED,BLU |
| | BLC | H-POS | | 0 ~ 20 (6) |
| | | V-POS | | 0 ~ 20 (5) |
| | | H-SIZE | | 0 ~ 20 (7) |
| | | V-SIZE | | 0 ~ 20 (7) |
| | WDR | WEIGHT | | LOW/ MIDDLE / HIGH |
| DAY&NIGHT | AUTO | D>N THRES | | 0(bright) ~ 20(dark) (13) |
| | | N>D THRES | | 0(bright) ~ 20(dark) (7) |
| | | DELAY | | 0 ~ 9sec, 10sec, 15sec (0 Sec) |
| | | BURST | | OFF/ ON |
| | COLOR | | | |
| | B&W | BURST | | OFF/ON |
| WHITE BAL | AWB | AUTO | | |
| | | AUTOext | | |
| | | PRESET | | Press ENTER key |
| | | MANUAL | C-TEMP. | 3000K/ 5000K / 8000K |
| | | | R-GAIN | 0 ~ 20 (10) |
| | | | B-GAIN | 0 ~ 20 (10) |
| | COLOR GAIN | | | 0 ~ 20 (10) |
| DNR | | | | OFF/ LOW/ MIDDLE / HIGH |
| IMAGE | SHARPNESS | | | 0 ~ 10 (8) |
| | GAMMA | | | 0.45/ 0.55 / 0.65/ 0.75 |
| | MIRROR | | | OFF /ON |
| | FLIP | | | OFF /ON |
| | D-ZOOM | | | 1.0X~16.0X (1.0X) |
| | ACE | | | OFF /LOW/ MIDDLE/ HIGH |
| | DEFOG | OFF | | |
| | | ON | MODE | AUTO /MANUAL |
| | | | LEVEL | LOW/ MIDDLE / HIGH |
| | SHADING | OFF | | |
| | | ON | WEIGHT | 0~100% (100%) |

| SETUP MENU | SUB MENU 1 | SUB MENU 2 | SUB MENU 3 | VALUE |
|-----------------|------------|----------------|----------------|---|
| IMAGE | PRIVACY | BOX | OFF/ON | |
| | | | ZONE NUM | 0~15 |
| | | | ZONE DISP | OFF/ON |
| | | | H-POS | 0~60 |
| | | | V-POS | 0~34 |
| | | | H-SIZE | 0~60 |
| | | | V-SIZE | 0~34 |
| | | | Y LEVEL | 0~20 |
| | | | CB LEVEL | 0~20 |
| | | | CR LEVEL | 0~20 |
| | | | TRANS | 0~3 |
| | | POLYGON | OFF/ON | |
| | | | ZONE NUM | 0~7 |
| | | | ZONE DISP | OFF/ON |
| | | | POS0-X ~POS3-X | 0~120 |
| | | | POS0-Y~POS3-Y | 0~68 |
| | | | Y LEVEL | 0~20 |
| | | | CB LEVEL | 0~20 |
| | | | CR LEVEL | 0~20 |
| | | | TRANS | 0~3 |
| MOTION | OFF | | | |
| | ON | DET WINDOW | WINDOW USE | 0~3 |
| | | | WINDOW ZONE | OFF/ON |
| | | | DET H-POS | 0~60 |
| | | | DET V-POS | 0~34 |
| | | | DET H-SIZE | 0~60 |
| | | | DET V-SIZE | 0~34 |
| | | SENSITIVITY | | 0~10 (5) |
| SYSTEM | COMM | CAM ID | | 0 ~ 255 (1) |
| | | BAUDRATE | | 2400,4800,9600,57600,115200 |
| | | CAM ID DISPLAY | | OFF/ON |
| | OUTPUT | FRAME RATE | HD-SDI | 1080_30p(25p), 720_30p(25p), 720_60p(50p), 1080_60i(50i) 1080_60p(50p) – DCC-1G60 only |
| | | | EX-SDI | 1080_30p(25p), 720_30p(25p), 720_60p(50p), 1080_60i(50i), 1080_60p(50p) |
| | | FREQ | | 50Hz(PAL) / 60Hz(NTSC) |
| | | SDI MODE | | HD-SDI / EX-SDI |
| | | SDI OUT MODE | EX-SDI | 135M(V2.0) / 135M+(V2.1) / 270M(V1.0) |
| | | | HD-SDI | Fixed [1.5G] |
| | | | 1080p60(50) | Fixed [270M] |
| | | ANALOG MODE | | OFF / CVBS / HD_T / HD_C / HD_A |
| | | CVBS OUT MODE | | CUT / FULL |
| | LANGUAGE | | | ENG/ CHINESE/ CHINESE(S)/ JAPANESE/ KOR |
| | CAM TITLE | OFF | | |
| | | RIGHT UP | | 0 ~ 9, A ~ Z, blank |
| | | LEFT DOWN | | 0 ~ 9, A ~ Z, blank |
| FACTORY DEFAULT | | | | Reset to factory setting |
| EXIT | | | | Exit SETUP menu |