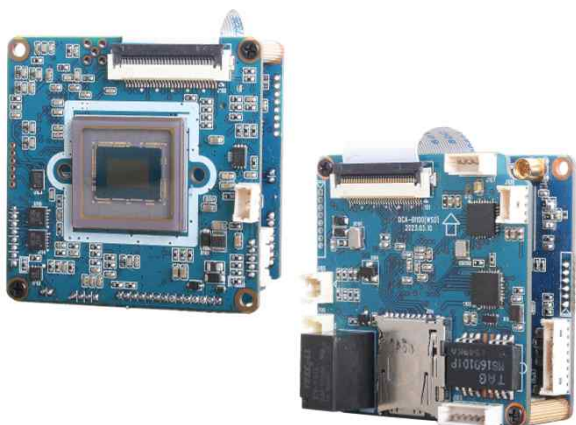


# DCC-2S30 (COMBINATION OF DCC-2S0 & DCA-BI100)

## CMOS IP VIDEO MODULE



### Main Features

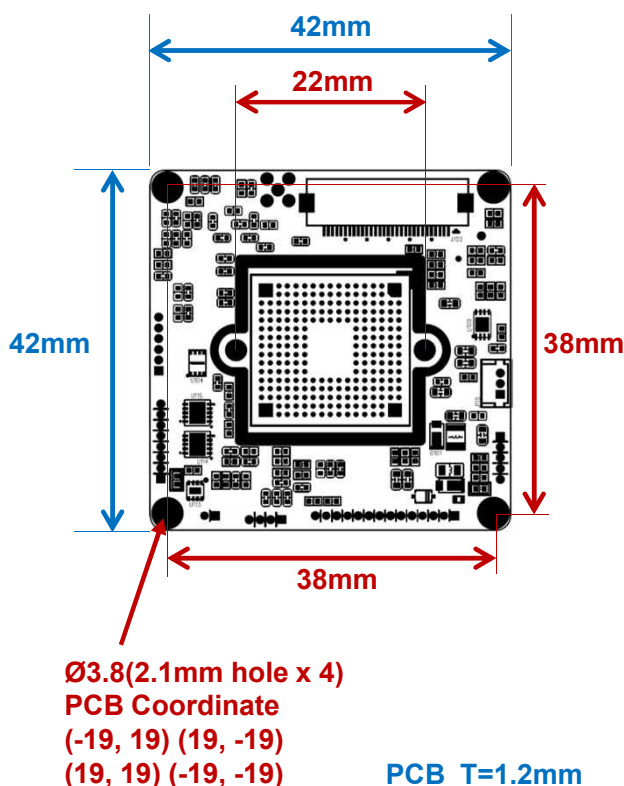
- 1/2.3" Sony 3.45μm Pixel Global Shutter Progressive CMOS Sensor
- Approx. 2.35 Mega Pixels – Maximum 1080p (1920x1080)
- Mountable Lens: Fixed & DC Auto IRIS & AF Motorized Lens
- TDN ICR Mechanism Available
- WDR, DSS(Sense-up), and 3D-NR Supported
- Strobe Output Supported (with Manual Shutter)
- Onvif Ver. 17.06 Compatible
- Supported Video Codec: H.264, MJPEG
- CMOS IP Video Module (42x42mm 2-boards)



### Specification

Model	DCC-2S30
Signal System	IP (Network)
Pickup Device	1/2.3"(D-7.9mm) 2.35M Sony CMOS Sensor
Scanning System	Progressive Scan (16:9)
Sync. System	Internal
Total Pixels	2.37MP [1,936(H)x1,226(V)]
Active Pixels	2.35MP [1,936(H)x1,216(V)]
Min. Illumination	0.1Lux (F2.5 - 30IRE), 0.003 (DSS on)
Mechanical ICR	Available (with Lens)
Video Out 1 (RJ45)	Up to 30fps @ 1920x1080p (1920x1080, 1280x720, 800x600, 704x480, 704x400, 640x480, 640x360, 320x240)
Video Out 2 (Option)	3G-SDI: 1080p25/30/50/60, 720p25/30/50/60, 1080i50/60
Video Out 3 (Option)	AHD, TVI, CVI or Analog CVBS AHD, TVI and CVI: 1080p@25/30 / Analog CVBS: D1
Lens	Option (Fixed & DC Auto IRIS & AF Stepping Motor Lens)
Lens (Mount)	Board/Pinhole Mount(M12), VF (Ø14) & C/CS Mount
OSD	Via Webpage Viewer
Camera Title	Off, On(Max. 8 Characters)
Language	English
White Balance	AUTO, AUTOext, Preset, Manual
BLC	Off, BLC, HLC, WDR(Low, Middle, High)
Day & Night Mode	Auto, Color, B&W, Ext.
Electronic Shutter	1/25(30)~1/30,000sec
Noise Reduction	Off, On(Low, Middle, High)
DSS(Sense-up)	X32
Mirror	Off, On(Mirror, Flip, Rotation)
Other Features	Motion Detection (4 Zones), Privacy Mask (16 Zones), ACE, D-Zoom, Defog, DIS, Freeze, Gamma, Shading etc.
Network Protocol	TCP/IP, UDP/IP, RTP, RTSP, RTCP, NTP, HTTP DHCP, FTP, SMTP, DNS, DDNS Onvif 17.06 Compatible
At-a-time Access	Maximum 3 users
Video Codec	H.264, MJPEG (Duplex Streaming)
Sensor In/Alarm Out	2/1
Audio Line In/Out	1/1
SD Memory Card Slot	Yes
Power Source	DC12V / POE
Power Consumption	Less than 5.4 Watts (360mA,450mA with AF Lens)
Operating Temp.	-10℃ ~55℃ (Humidity :0%RH ~ 90%RH)
Size (mm)	42(W) x 42(D) – 2 Boards
Weight	25 g (Including standoffs)

### Dimension



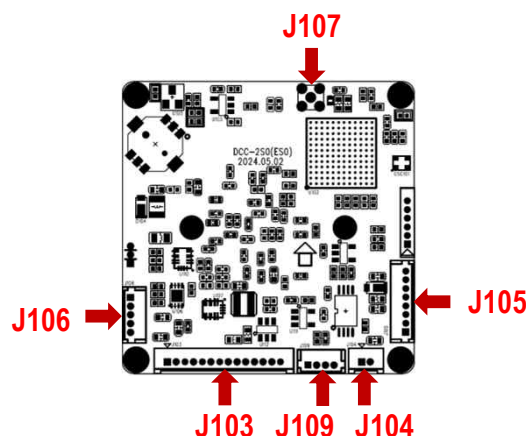
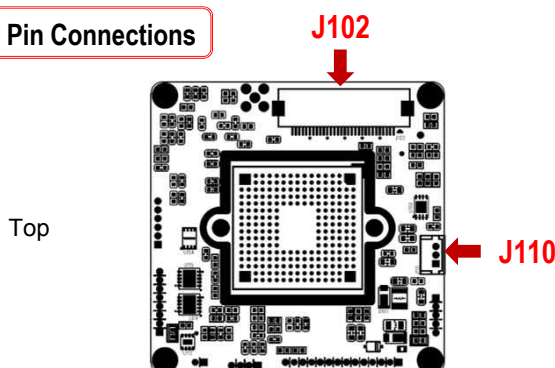
### Option

- Lens
- TDN ICR
- Standoffs
  - Female ends (8mm, 9.5mm, 11mm)
  - Male / Female (8, 9, 10, 10.5, 11, 12, 12.5mm)

# DCC-2S30 (COMBINATION OF DCC-2S0 & DCA-BI100)

## CMOS IP VIDEO MODULE

### Pin Connections



### J102 – BT.1120 & Etc.

No.	Pin Item	No.	Pin Item
1	RXD	16	Y4
2	TXD	17	Y5
3	NC	18	Y6
4	NC	19	Y7
5	VCC (7~15V)	20	GND
6	VCC (7~15V)	21	PIXEL CLOCK
7	VCC (7~15V)	22	GND
8	GND	23	C0
9	GPIO	24	C1
10	nRESET IN (Camera Reset)	25	C2
11	GND	26	C3
12	Y0	27	C4
13	Y1	28	C5
14	Y2	29	C6
15	Y3	30	C7

Wafer SMD type: 0.5mm pitch – 30 pin

Manufacturer: **Yeonho**

MFG Part Number: **05002HR-H30J05**

### J110 – V\_SYNC

No.	Pin Item	No.	Pin Item
1	DC12V (OUT)	3	V_SYNC (1.8V Level)
2	GND		

Wafer DIP type: 1.25mm pitch – 3 pin

Manufacturer: **Molex**

MFG Part Number: **53047-0310**

### J109 – DC IRIS

No.	Pin Item	No.	Pin Item
1	DAMP +	3	DRV +
2	DAMP -	4	DRV -

Wafer DIP type: 1.25mm pitch – 4 pin

Manufacturer: **Molex**

MFG Part Number: **53047-0410**

### J107 – MMCX for SDI Output

### J103 – User Interface

No.	Pin Item	No.	Pin Item
1	CVBS Out	8	Key RIGHT
2	GND	9	Key LEFT
3	DC12V In	10	TXD Out (3.3V TTL)
4	GND	11	RXD In (3.3V TTL)
5	Key DOWN	12	GND
6	Key UP	13	DC3.3V Out
7	Key SET (AD Key)	14	Freeze

Wafer DIP type: 1.25mm pitch – 14 pin

Manufacturer: **Yeonho**

MFG Part Number: **12512WS-14B**

### J106 – LED

No.	Pin Item	No.	Pin Item
1	LED VCC	4	LED_CTL (High / Low)
2	GND	5	LED_STROBE (Pulse)
3	EXT_DN		

Wafer DIP type: 1.25mm pitch – 5 pin

Manufacturer: **Molex**

MFG Part Number: **53047-0510**

### J104 – TDN ICR

No.	Pin Item	No.	Pin Item
1	ICR (+)	2	ICR (-)

Wafer DIP type: 1.25mm pitch – 2 pin

Manufacturer: **Yeonho**

MFG Part Number: **12512WS-02B**

### J105 – Motor Control

No.	Pin Item	No.	Pin Item
1	FOCUS A-	5	ZOOM B+
2	FOCUS A+	6	ZOOM B-
3	ZOOM A-	7	FOCUS B-
4	ZOOM A+	8	FOCUS B+

Wafer DIP type: 1.25mm pitch – 8 pin

Manufacturer: **Molex**

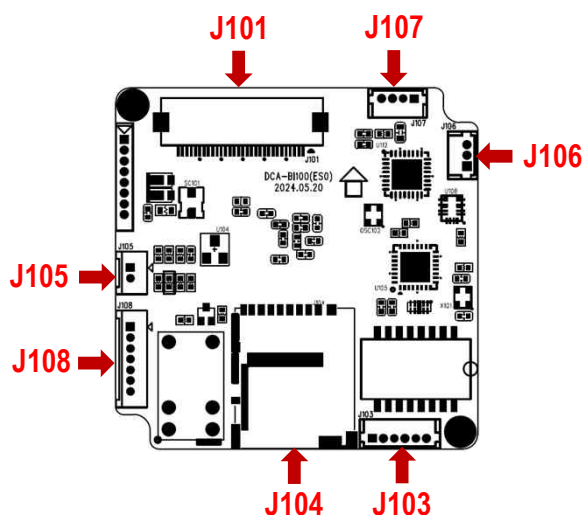
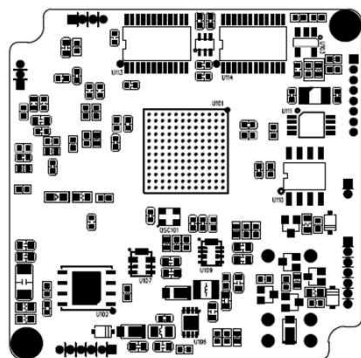
MFG Part Number: **53047-0810**

# DCC-2S30 (COMBINATION OF DCC-2S0 & DCA-BI100)

## CMOS IP VIDEO MODULE

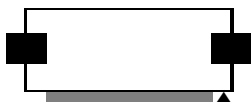
### Pin Connections

Encoder Board Front



Encoder Board Rear

### J102 – BT.1120 & Etc.



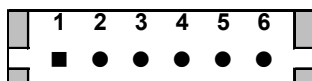
No.	Pin Item	No.	Pin Item
1	C7 (In)	16	Y3 (In)
2	C6 (In)	17	Y2 (In)
3	C5 (In)	18	Y1 (In)
4	C4 (In)	19	Y0 (In)
5	C3 (In)	20	GND
6	C2 (In)	21	nRESET (Out) Camera Reset
7	C1 (In)	22	GPIO (In)
8	C0 (In)	23	GND
9	GND	24	DC12V (Out)
10	PIXEL CLOCK	25	DC12V (Out)
11	GND	26	DC12V (Out)
12	Y7 (In)	27	Reserved
13	Y6 (In)	28	Reserved
14	Y5 (In)	29	RXD (In)
15	Y4 (In)	30	TXD (Out)

Wafer SMD type: 0.5mm pitch – 30 pin

Manufacturer: Yeonho

MFG Part Number: 05002HR-H30J05

### J103 – Ethernet



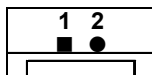
No.	Pin Item	No.	Pin Item
1	DC 12V	4	RXD + (Ethernet)
2	GND	5	TXD – (Ethernet)
3	RXD – (Ethernet)	6	TXD + (Ethernet)

Wafer DIP type: 1.25mm pitch – 6 pin

Manufacturer: Molex

MFG Part Number: 53047-0610

### J105 – RS485



No.	Pin Item	No.	Pin Item
1	RS485 ( + )	2	RS485 ( - )

Wafer DIP type: 1.25mm pitch – 2 pin

Manufacturer: Yeonho

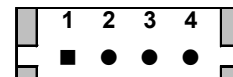
MFG Part Number: 12512WS-02B

### J104 – SD Card Slot

Manufacturer: Hirose

MFG Part Number: DM3AT-SF-PEJM5(21)

### J107 – Audio



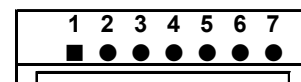
No.	Pin Item	No.	Pin Item
1	LINE IN	3	LINE OUT
2	GND	4	GND

Wafer DIP type: 1.25mm pitch – 4 pin

Manufacturer: Molex

MFG Part Number: 53047-0410

### J108 – ALARM IN/OUT



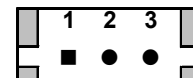
No.	Pin Item	No.	Pin Item
1	N/O (Normal Open)	5	GND
2	N/C (Normal Close)	6	ALARM 2 IN
3	COM (Common)	7	GND
4	ALARM 1 IN		

Wafer DIP type: 1.25mm pitch – 7 pin

Manufacturer: Yeonho

MFG Part Number: 12512WS-07B

### J106 – Reset



No.	Pin Item	No.	Pin Item
1	Factory Default	3	GND
2	SW_Reset		

Wafer DIP type: 1.25mm pitch – 3 pin

Manufacturer: Molex

MFG Part Number: 53047-0310

# DCC-2S30 (COMBINATION OF DCC-2S0 & DCA-BI100)

## CMOS IP VIDEO MODULE

### • IP camera connection

Connect LAN cable to RJ45 jack of camera

Connect the other end LAN cable to RJ45 jack of router or hub

If you are not using POE switcher to provide the power to the IP camera, connect regulated a DC12V power adaptor to the IP camera.

Wait for about 30 seconds until the camera initialization is completed

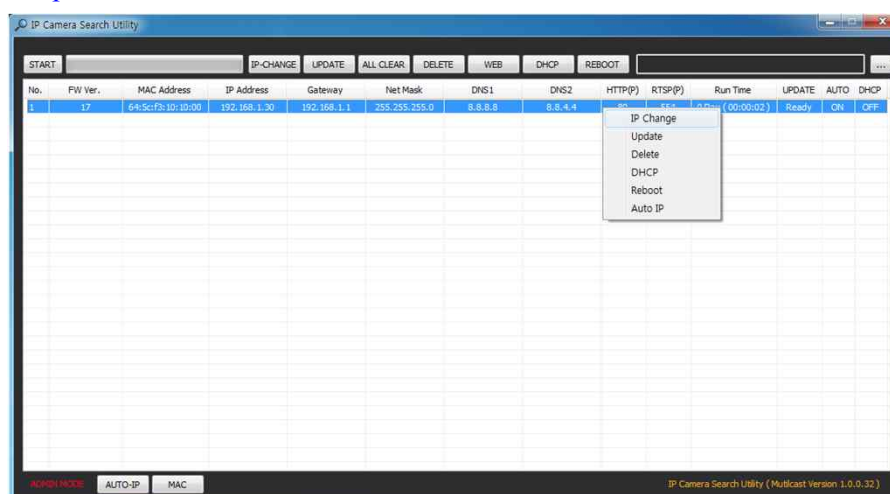
Factory Default IP address is **192.168.1.30**

Factory Default ID & Password are **admin / admin**.

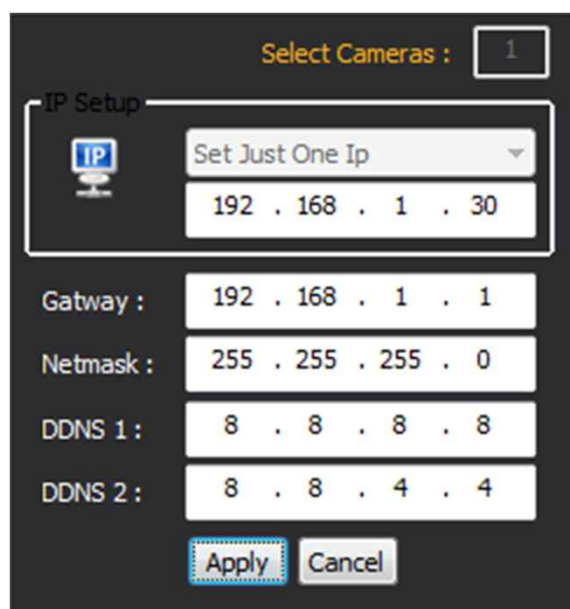
### • Using IP Cam Search

You can simply change the IP address by using 'IP Cam Search' provided.

Run IP Cam Search as administrator. Click "START" button when the IP camera is connected to your PC or network, all IP address will appear. This program can be downloaded from the SUPPORT section of our web site at [www.parantek.com](http://www.parantek.com).



Choose & change the IP address of camera you want to change and click "IP change"



After click the "IP Change" button left window will be appeared. Once you click "Apply" button, the camera will reboot for 10second.

After reboot the camera, the changed IP address will be applied and appeared.

### • Checking Video by Web Viewer

Run web browser and Input the IP address which taken from IP Search.

### • Supported O/S & Web Browser

- O/S : Windows7, 8, 10, MAC
- Browser : Internet Explorer 11 or higher, Chrome , Firefox, Safari, Opera