

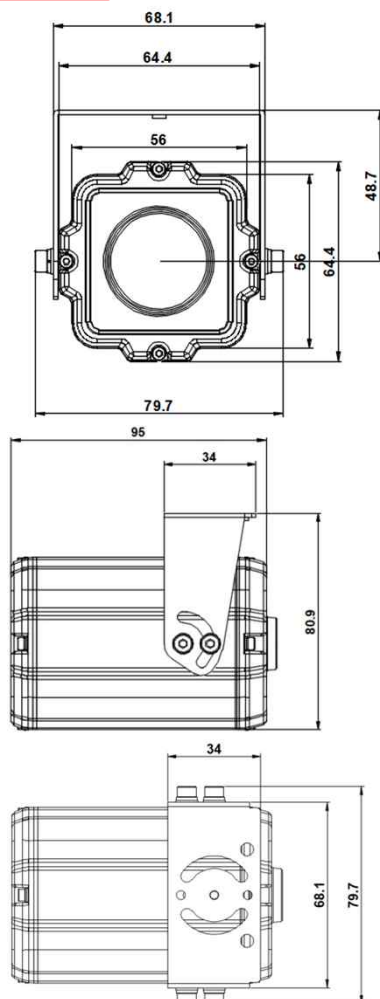
# DIR-LZ2S39-30(D)P

PARANTEK

## OUTDOOR IP CAMERA



### Dimension



### Option

### Main Features

- 1/2.3" 2MP Sony Global Shutter CMOS Sensor
- 2 Mega Pixels (Max. 1080p25/30)
- f=3.6~12mm M/P Lens (ICR, Stepping Motorized One-push AF)
- 16pcs of 740nm LEDs (Strobe Control with Manual Shutter)
- WDR, DSS(Sens-up), and 3DNR Supported
- Onvif Ver. 17.06 Compatible with H.264, and MJPEG
- Flexible Installation: U type swivel bracket can hold up the camera both up & down or left & right.
- Water-proof Housing (IP66)



### Specifications

Model	DIR-LZ2S39-30P	DIR-LZ2S39-30DP
Signal System	IP (Network) – RTOS	
Pickup Device	<b>1/2.3"(D-7.9mm) 2.35M Sony Pregius CMOS Sensor</b>	
Scanning System	Progressive Scan (16:9)	
Total Pixels	2.37MP [1,936(H)x1,226(V)]	
Active Pixels	2.35MP [1,936(H)x1,216(V)]	
Min. Illumination	0.1Lux, 0.003(DSS on), 0Lux (IR on)	
No. of IRED	<b>16pcs (740nm) Strobe Control with Manual Shutter</b>	
Video Out (RJ45)	<b>Up to 30fps @ 1920x1080p</b> (1920x1080, 1280x1024, 1280x960, 1280x720, 1024x768, 640x480, 320x240)	
Lens	<b>DC Auto ICR Vari-focal f=3.6~11mm, F1.5 Stepping Motorized One-push AF</b>	
Lens (Mount)	Board type (Ø14)	
Angle of View	134.2°~53°(D), 106.8°~44.2° (H), 68.8°~29.6°(V)	
OSD	Via Webpage Viewer	
Camera Title	Off, On(Max. 8 Characters)	
Language	English	
White Balance	AUTO, AUTOext, Preset, Manual	
WDR	<b>Off, On(Low, Middle, High)</b>	
Day & Night Mode	Auto, Color, B&W	
Electronic Shutter	1/25(30)~1/30,000sec	
Noise Reduction	Off, On(Low, Middle, High)	
DSS(Sens-up)	<b>X32</b>	
Mirror	Off, On(Mirror, Flip)	
Other Features	Motion Detection(4 Zones), Privacy Mask(8 Zones), Defog. Gamma Etc.	
Network Protocol	TCP/IP, UDP/IP, RTP, RTSP, RTCP, NTP, HTTP DHCP, FTP, SMTP, DNS, DDNS Onvif 17.06 Compatible	
At-a-time Access	Maximum 3 users	
Video/Audio Codec	H.264, MJPEG (Duplex Streaming)	
Sensor In/Alarm Out	N/A	<b>2 Inputs / 1 Output</b>
Audio Line In/Out	N/A	
Power Source	<b>DC12V (w/o POE)</b>	
Power Consumption	Less than 5.1Watts (420mA)	
Operating Temp.	-10℃ ~ 55℃ (Humidity :0%RH ~ 90%RH)	
Size (mm)	64.4(W) x 64.4(H) x 95(D) (Without Bracket)	
Weight	470g (gift-box packing)	483g (gift-box packing)

# DIR-LZ2S39-30(D)P

## OUTDOOR IP CAMERA

### • IP camera connection

Connect LAN cable to RJ45 jack of camera

Connect the other end LAN cable to RJ45 jack of router or hub

If you are not using POE switcher to provide the power to the IP camera, connect regulated a DC12V power adaptor to the IP camera.

Wait for about 30 seconds until the camera initialization is completed

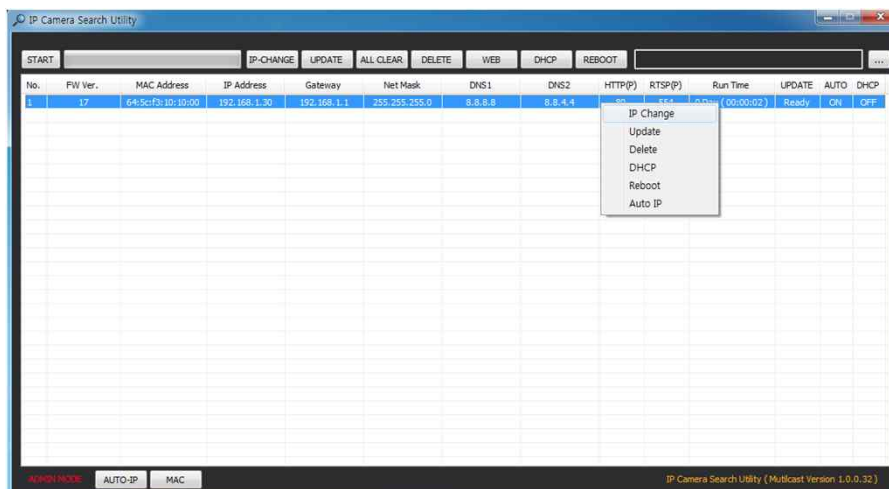
Factory Default IP address is **192.168.1.30**

Factory Default ID & Password are **admin / admin.**

### • Using IP Search

You can simply change the IP address by using 'IP Search' provided.

Run IP Search as administrator. Click "START" button when the IP camera is connected to your PC or network, all IP address will appear.



Choose & change the IP address of camera you want to change and click "IP change"



After click the "IP Change" button left window will be appeared. Once you click "Apply" button, the camera will reboot for 10second.

After reboot the camera, the changed IP address will be applied and appeared.

### • Checking Video by Web Viewer

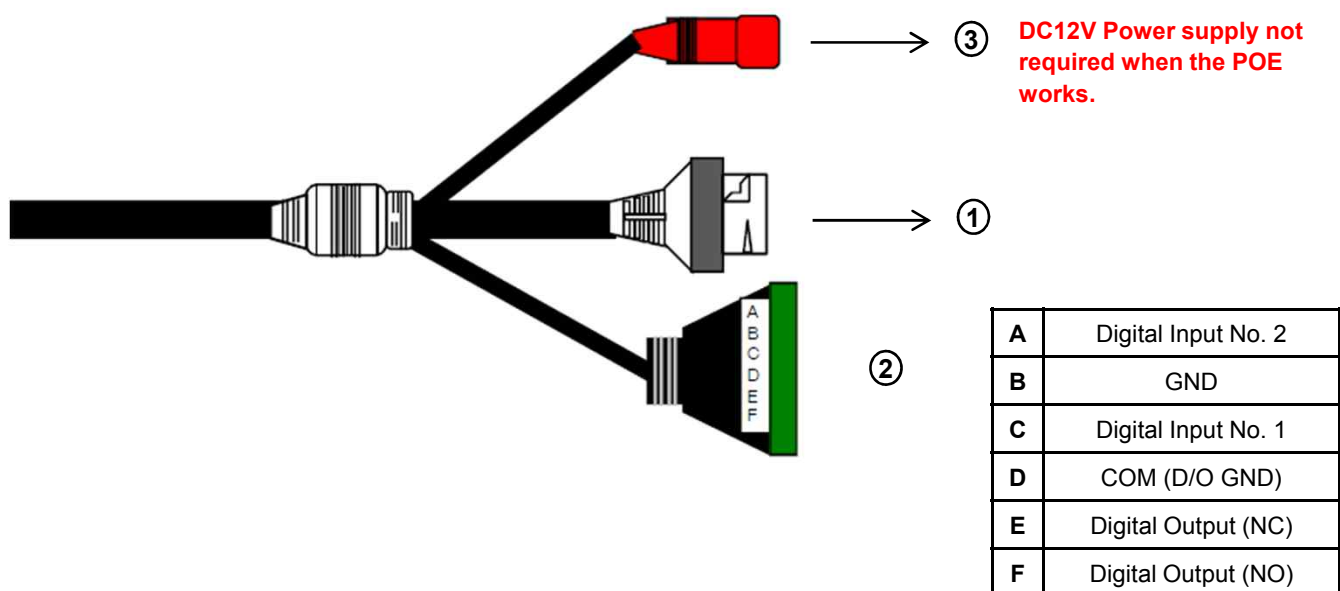
Run web browser and Input the IP address which taken from IP Search.

### • Supported O/S & Web Browser

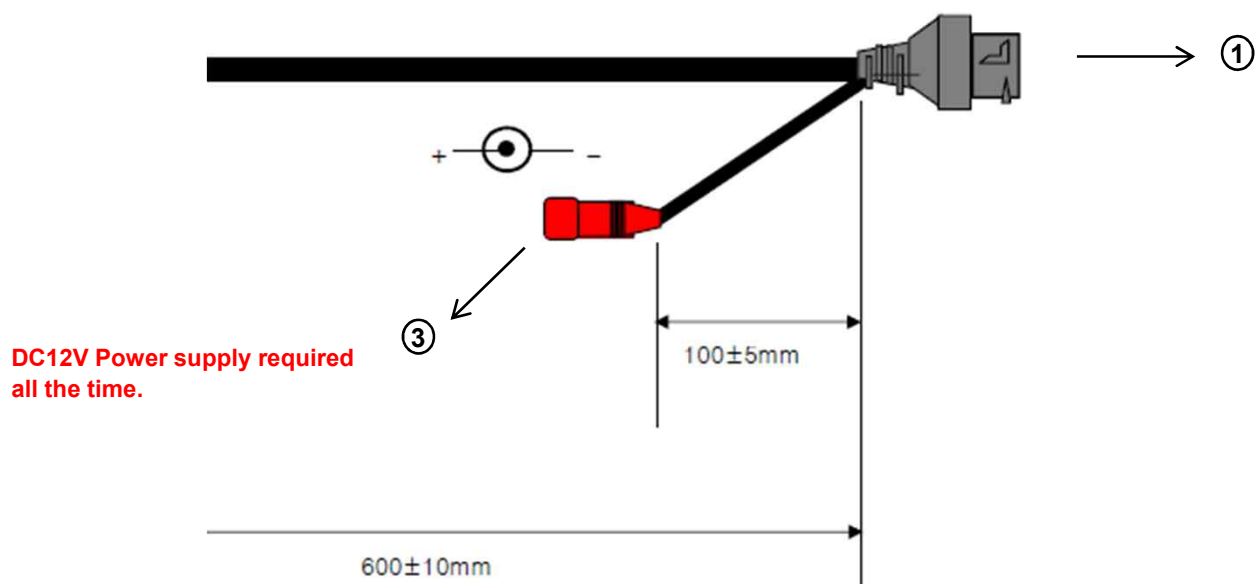
- O/S : Windows7, 8, 10, MAC
- Browser : Internet Explorer 11 or higher, Chrome , Firefox, Safari, Opera

# Cable Connection Interface

## DIR-LZ2S39-30DP



## DIR-LZ2S39-30P



	Function	I/O	Note	Remarks
①	VIDEO/POE/CONTROL	IN/OUT	H.264 video output, Power over Ethernet, Control (RJ45)	
②	ALARM IN / OUT	IN/OUT	2 x Digital Inputs, 1 x Digital Output(Replay)	
③	POWER	IN	Camera power input	DC12V