

DID-Z1M4(P)-50

INDOOR DOME IP CAMERA

PARANTEK



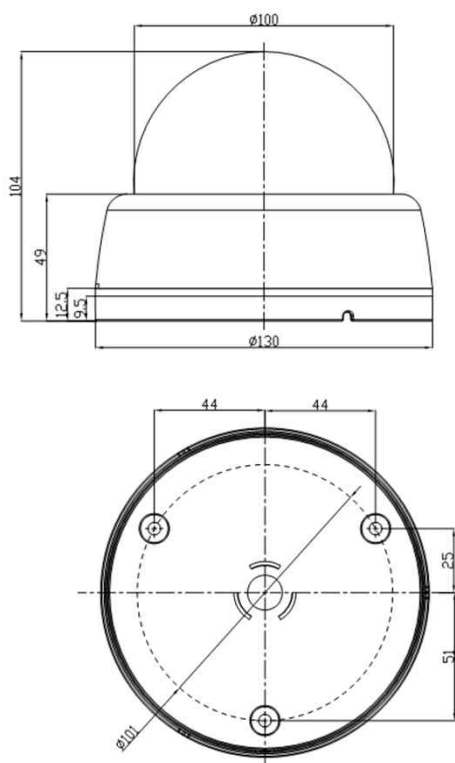
Main Features

- 1/2.8" 2.12M Sony Exmor & Starvis CMOS Sensor
- 2Mega Pixels (Max. 1080p25/30)
- f=5~50mm M/P Lens (ICR, Stepping Motorized One-push AF)
- POE Interface Built-in
- WDR, DSS(Sens-up), or 3DNR Supported Conditionally
- Onvif Ver. 17.06 Compatible with H.264, and MJPEG
- Indoor(100Ø) Dome Housing



Specifications

Dimension



Option

- Lens (3.3~12mm)
- Sensor In/Alarm Out, Audio In/Out, Micro-SD

Model	DID-Z1M4-50	DIM-Z1M4P-50
Signal System	IP (Network) – RTOS	
Pickup Device	1/2.8"(D-6.46mm) 2.1M Sony Starvis CMOS Sensor	
Scanning System	Progressive Scan (16:9)	
Total Pixels	2.16MP [1,945(H)x1,109(V)]	
Active Pixels	2.12MP [1,937(H)x1,097(V)]	
Min. Illumination	0.1Lux, 0.003(DSS on)	
No. of IRED	N/A	
Video Out (RJ45)	Up to 30fps @ 1920x1080p (1920x1080, 1280x1024, 1280x960, 1280x720, 1024x768, 640x480, 320x240)	
Lens	DC Auto ICR Vari-focal f=5~50mm, F1.4 Stepping Motorized One-push AF	
Lens (Mount)	Board type (Ø14)	
Angle of View	58.7°~8.7°(D), 51.4°~7.6°(H), 29°~4.3°(V)	
OSD	Via Webpage Viewer	
Camera Title	Off, On(Max. 8 Characters)	
Language	English	
White Balance	AUTO, AUTOext, Preset, Manual	
WDR	Off, On(Low, Middle, High) WDR can't work together with 3D-NR or DSS	
Day & Night Mode	Auto, Color, B&W	
Electronic Shutter	1/25(30)~1/30,000sec	
Noise Reduction	Off, On(Low, Middle, High) DNR can't work together with WDR or DSS	
DSS(Sens-up)	X32 DSS can't work together with WDR or DNR	
Mirror	Off, On(Mirror, Flip)	
Other Features	Motion Detection(4 Zones), Privacy Mask(8 Zones), Defog, Gamma Etc.	
Network Protocol	TCP/IP, UDP/IP, RTP, RTSP, RTCP, NTP, HTTP DHCP, FTP, SMTP, DNS, DDNS Onvif 17.06 Compatible	
At-a-time Access	Maximum 3 users	
Video/Audio Codec	H.264, MJPEG (Duplex Streaming)	
Sensor In/Alarm Out	N/A	
Audio Line In/Out	N/A	
Power Source	DC12V	DC12V / POE Built-in
Power Consumption	Less than 2.4Watts (200mA)	
Operating Temp.	-10℃ ~ 55℃ (Humidity :0%RH ~ 90%RH)	
Size (mm)	100Ø (Dome Diameter)	
Weight	442 g (gift-box packing)	452 g (gift-box packing)

DID-Z1M4(P)-50

INDOOR DOME IP CAMERA

• IP camera connection

Connect LAN cable to RJ45 jack of camera

Connect the other end LAN cable to RJ45 jack of router or hub

If you are not using POE switcher to provide the power to the IP camera, connect regulated a DC12V power adaptor to the IP camera.

Wait for about 30 seconds until the camera initialization is completed

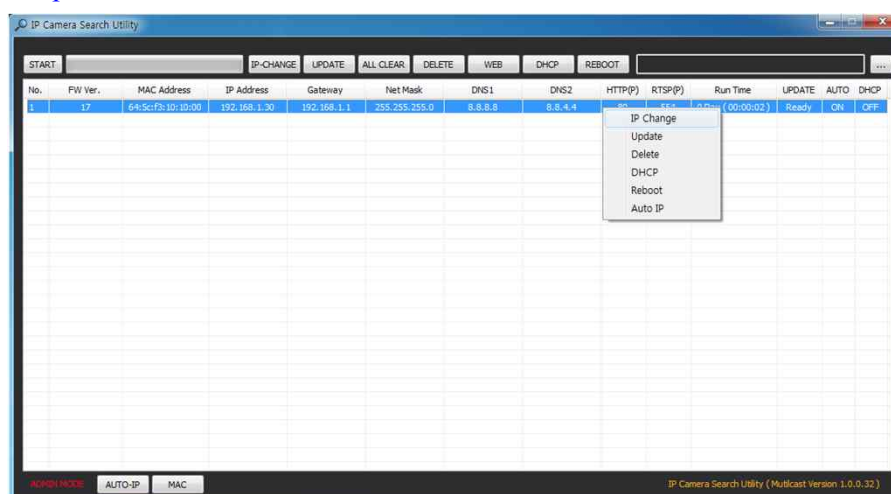
Factory Default IP address is **192.168.1.30**

Factory Default ID & Password are **admin / admin**.

• Using IP Cam Search

You can simply change the IP address by using 'IP Cam Search' provided.

Run IP Cam Search as administrator. Click "START" button when the IP camera is connected to your PC or network, all IP address will appear. This program can be downloaded from the SUPPORT section of our web site at www.parantek.com.



Choose & change the IP address of camera you want to change and click "IP change"



After click the "IP Change" button left window will be appeared. Once you click "Apply" button, the camera will reboot for 10second.

After reboot the camera, the changed IP address will be applied and appeared.

• Checking Video by Web Viewer

Run web browser and Input the IP address which taken from IP Search.

• Supported O/S & Web Browser

- O/S : Windows7, 8, 10, MAC
- Browser : Internet Explorer 11 or higher, Chrome , Firefox, Safari, Opera