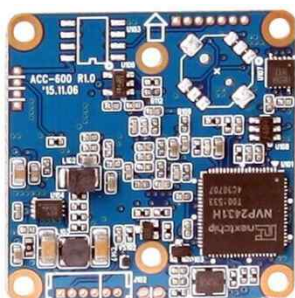
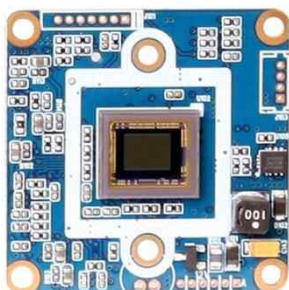


ACC-600

AHD1.0 CMOS VIDEO MODULE

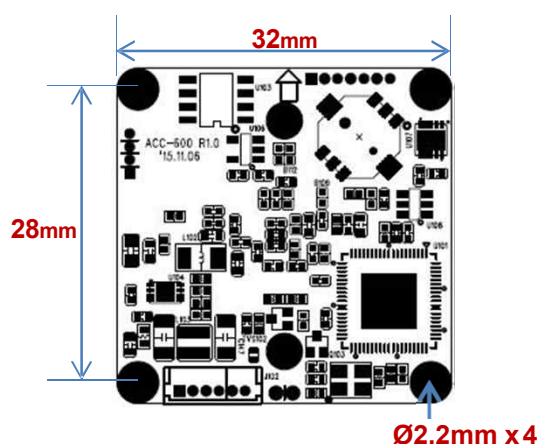
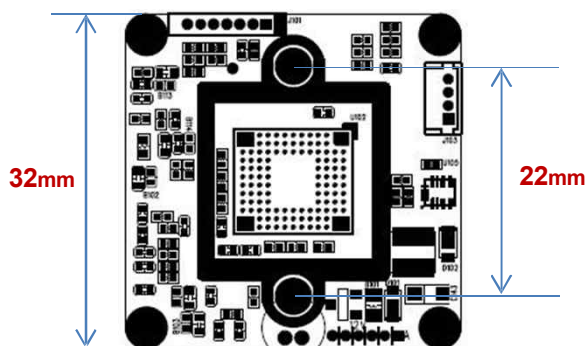


Main Features

- 1/3" 720p Sony CMOS Sensor
- 1.27M Pixels (800 TV Lines)
- Mountable Lens: Fixed, Pinhole, Manual VF Lens
- 3D-DNR, DSS (Sens-up) Supported
- Built-in OSD Switch (AD type Supported)
- UTC Supported
- Audio Supported Optionally
- AHD1.0 Camera (CVBS Out Mode Supported)
- CMOS AHD1.0 Video Module (32x32mm 1-board)



Dimension



Option

- Lens

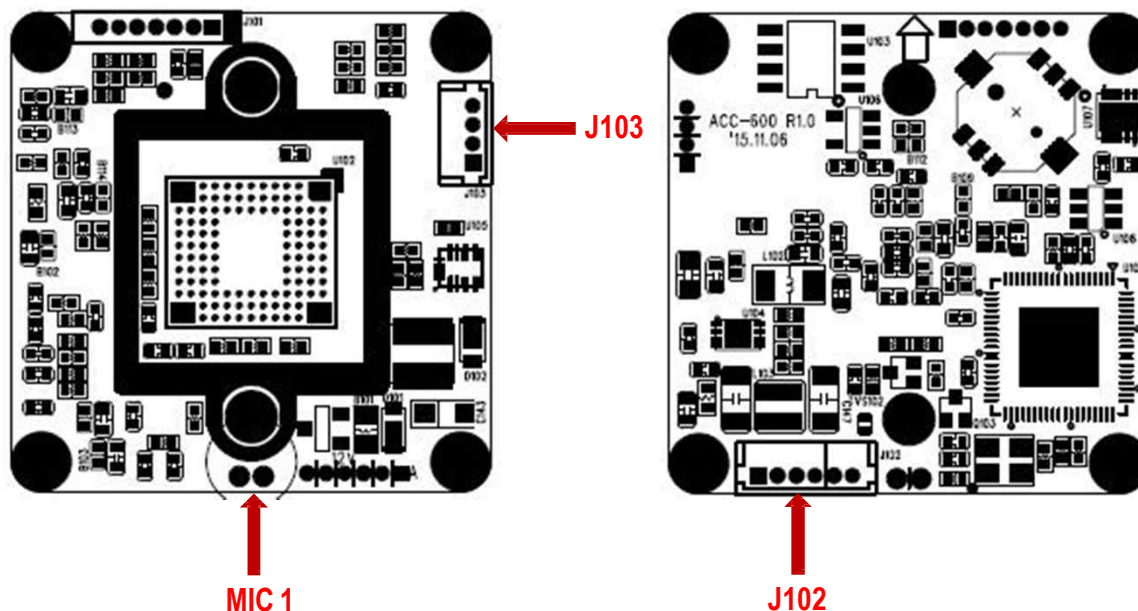
Specifications

Model	ACC-600
Signal System	AHD 1.0
Pickup Device	1/3"(D-6.09mm) 1.27M Sony CMOS Sensor
Scanning System	Progressive Scan (16:9)
Sync. System	Internal
Total Pixels	1.30MP [1312(H)x993(V)]
Active Pixels	1.27MP [1297(H)x977(V)]
Min. Illumination	0.06Lux(F2.5 – 30IRE), 0.002Lux(DSS on)
H-Resolution	More than 800TV Lines(H)
S/N Ratio	More than 50dB (AGCoff)
Video Out (BNC)	AHD: 720p@25/30 or CVBS 1.0V p.p
Lens	Option
Lens (Mount)	Fixed & Manual IRIS Lens Board, Pinhole, VF type – M12 & Ø14
OSD	Via 5-direction Tact-switch
Camera Title	Off, On(Max. 15 Characters)
Language	English, Russian, French, Spanish, Portuguese, German Chinese(Simplified), Chinese(Traditional), Italian, Polish, Dutch, Turkish
Exposure	AE, Manual
White Balance	AWB, ATW, AWC->SET, Manual, Indoor, Outdoor
BLC	Off, BLC, HSBL
Day & Night Mode	AUTO, COLOR, B/W, EXT
Gain Control	AGC (1~15)
Electronic Shutter	1/50(60)~1/50,000sec
DSS(Sens-up)	Off, On(Max. X30)
Noise Reduction	2DNR, 3DNR
Mirror	Off, On(Mirror, Flip, Rotation)
Other Features	Motion Detection (4 Zone), Privacy Mask (4 Zones), Freeze, Neg. Image, Lens Shading, Defog etc.
Microphone	Available (Option: ACC-600A)
Power Source	DC 5~12V
Power Consumption	Less than 1.1 Watts (90mA@DC12V)
Operating Temp.	-10℃ ~55℃ (Humidity :0%RH ~ 90%RH)
Size (mm)	32x32 1-board
Weight	4.5 g (without OLPF)

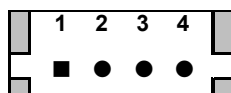
ACC-600

CMOS VIDEO MODULE

Pin Connections



J103 – IR LED



No.	Pin Item	No.	Pin Item
1	DC 12V	3	LED ON (IN)
2	GND	4	DC 3.3V

Wafer DIP type: **1.25mm pitch – 4pin**

Manufacturer: **Molex**

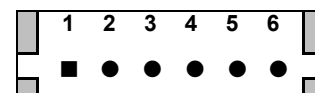
MFG Part Number: **53047-0410**

MIC 1 - Audio



No.	Pin Item	No.	Pin Item
1	MIC IN	2	GND

J102 – Input/Output



No.	Pin Item	No.	Pin Item
1	AUDIO OUT	4	VCC (DC5~12V)
2	VIDEO	5	GND
3	GND	6	A/D KEY

Wafer DIP type: **1.25mm pitch – 4 pin / 6 pin**

Manufacturer: **Molex**

MFG Part Number: **53047-0410 / 0610**

* Note 1.

When it is supplying power to IR LED board, the camera is not working properly with DC5V input. It should be DC6~12V range then.