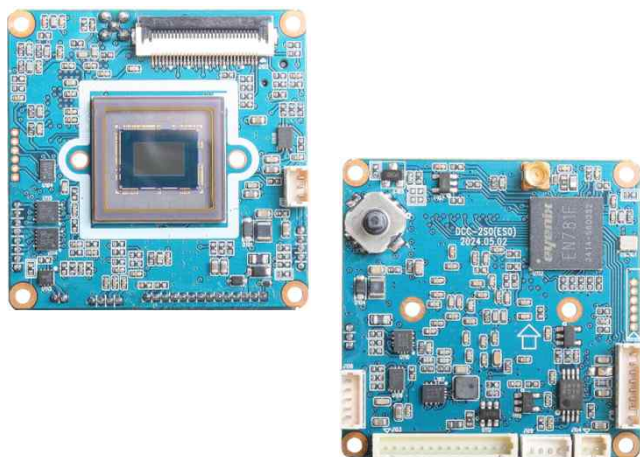


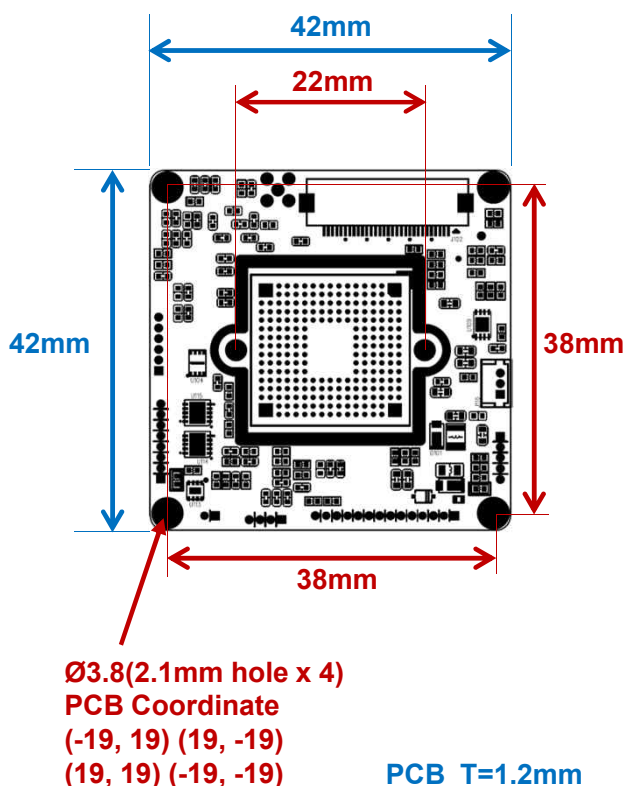
DCC-2S0

CMOS VIDEO MODULE

PARANTEK



Dimension



Option

- Lens

Main Features

- 1/2.3" Sony 3.45μm Pixel **Global Shutter** Progressive CMOS Sensor
- Approx. 2.35 Mega Pixels (Max. 1080p)
- Mountable Lens: Fixed IRIS, DC Auto IRIS, Auto Focus VF Lens
- WDR / 3D-DNR / DSS (Sense-up) Supported
- Strobe Output Supported
- Built-in OSD Switch, AD & GPIO OSD Port Available
- Pelco-D and Parantek Serial Protocol Supported (UART Control)
- SDI / BT.1120 Video Out (Analog Video Outputs Supported)
- CMOS Video Module (42x42mm 1-board)



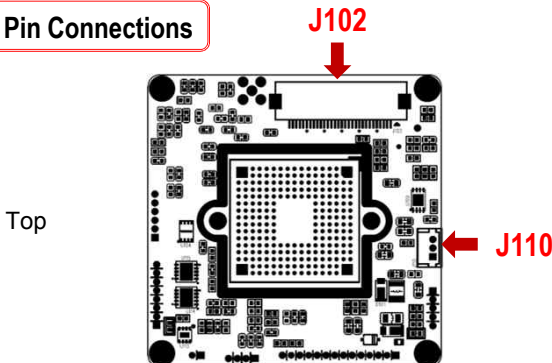
Specification

Model	DCC-2S0
Signal System	SDI (Serial Data Interface) / BT.1120
Pickup Device	1/2.3"(D-7.9mm) 2.35M Sony CMOS Sensor
Scanning System	Progressive Scan (16:9)
Sync. System	Internal
Total Pixels	2.37MP [1,936(H)x1,226(V)]
Active Pixels	2.35MP [1,936(H)x1,216(V)]
Min. Illumination	0.1Lux (F2.5 - 30IRE), 0.003 (DSS on)
Mechanical ICR	N/A (TBD)
Video Out (1)	SDI: 1080p25/30/50/60, 720p25/30/50/60, 1080i50/60
Video Out (2)	BT.1120: 1080p25/30/50/60, 720p25/30/50/60, 1080i50/60
Video Out (2)	AHD, TVI, CVI or Analog CVBS AHD, TVI and CVI: 1080p@25/30 / Analog CVBS: D1
Lens	Option (Fixed & DC Auto IRIS & AF Stepping Motor Lens)
Lens (Mount)	Board/Pinhole Mount(M12), VF (Ø14) & C/CS Mount
OSD	Via OSD Switch, AD or GPIO OSD Port, Serial Communication
Camera Title	Off, On(Max. 8 Characters)
Language	English, Chinese(Simplified), Chinese(Traditional), Japanese, Korean
Exposure	DC, Manual
White Balance	AUTO, AUTOext, Preset, Manual
BLC	Off, HLC, BLC, WDR
Day & Night Mode	AUTO, COLOR, B/W, EXT. D&N
Gain Control	AGC (0~10)
Electronic Shutter	Auto, Manual, Flickerless
DSS(Sense-up)	X32
Noise Reduction	3DNR (Off, Low, Middle, High)
Mirror	Off, On(Mirror, Flip, Rotation)
Other Features	Motion Detection (4 Zones), Privacy Mask (16 Zones), ACE, D-Zoom, Defog, DIS, Freeze, Gamma, Shading etc.
Communication	Pelco-D and Parantek Serial Protocol Supported RS-232C TTL 3.3V (Default: 115,200bps, ID1)
Microphone	N/A
Power Source	DC 9~15V
Power Consumption	Less than 3.6 Watts (300mA@DC12V)
Operating Temp.	-10℃ ~ 55℃ (Humidity :0%RH ~ 90%RH)
Size (mm)	42x42 1-board
Weight	10.5 g (without OLPF)

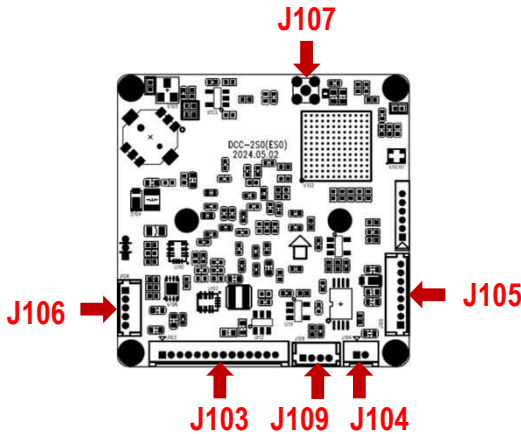
DCC-2S0

CMOS VIDEO MODULE

Pin Connections



Top



Bottom

J102 – BT.1120 & Etc.

No.	Pin Item	No.	Pin Item
1	RXD	16	Y4
2	TXD	17	Y5
3	NC	18	Y6
4	NC	19	Y7
5	VCC (7~15V)	20	GND
6	VCC (7~15V)	21	PIXEL CLOCK
7	VCC (7~15V)	22	GND
8	GND	23	C0
9	GPIO	24	C1
10	nRESET IN (Camera Reset)	25	C2
11	GND	26	C3
12	Y0	27	C4
13	Y1	28	C5
14	Y2	29	C6
15	Y3	30	C7

Wafer SMD type: 0.5mm pitch – 30 pin

Manufacturer: Yeonho

MFG Part Number: 05002HR-H30J05

J110 – V_SYNC

No.	Pin Item	No.	Pin Item
1	DC12V (OUT)	3	V_SYNC (1.8V Level)
2	GND		

Wafer DIP type: 1.25mm pitch – 3 pin

Manufacturer: Molex

MFG Part Number: 53047-0310

J109 – DC IRIS

No.	Pin Item	No.	Pin Item
1	DAMP +	3	DRV +
2	DAMP -	4	DRV -

Wafer DIP type: 1.25mm pitch – 4 pin

Manufacturer: Molex

MFG Part Number: 53047-0410

J107 – MMCX for SDI Output

J103 – User Interface

No.	Pin Item	No.	Pin Item
1	CVBS Out	8	Key RIGHT
2	GND	9	Key LEFT
3	DC12V In	10	TXD Out (3.3V TTL)
4	GND	11	RXD In (3.3V TTL)
5	Key DOWN	12	GND
6	Key UP	13	DC3.3V Out
7	Key SET (AD Key)	14	Freeze

Wafer DIP type: 1.25mm pitch – 14 pin

Manufacturer: Yeonho

MFG Part Number: 12512WS-14B

J106 – LED

No.	Pin Item	No.	Pin Item
1	LED VCC	4	LED_CTL (High / Low)
2	GND	5	LED_STROBE (Pulse)
3	EXT_DN		

Wafer DIP type: 1.25mm pitch – 5 pin

Manufacturer: Molex

MFG Part Number: 53047-0510

J104 – TDN ICR

No.	Pin Item	No.	Pin Item
1	ICR (+)	2	ICR (-)

Wafer DIP type: 1.25mm pitch – 2 pin

Manufacturer: Yeonho

MFG Part Number: 12512WS-02B

J105 – Motor Control

No.	Pin Item	No.	Pin Item
1	FOCUS A-	5	ZOOM B+
2	FOCUS A+	6	ZOOM B-
3	ZOOM A-	7	FOCUS B-
4	ZOOM A+	8	FOCUS B+

Wafer DIP type: 1.25mm pitch – 8 pin

Manufacturer: Molex

MFG Part Number: 53047-0810

SETUP MENU	SUB MENU 1	SUB MENU 2	SUB MENU 3	VALUE
IRIS				MANUAL/DC
ZOOM/FOCUS	FOCUS MODE			ONESHOT/MANUAL
	D&N FILTER			SYNC OFF/SYNC ON
	POWER ON			ACTION/NO ACTION
	ONEPUSH AF			Press ENTER key
	LENS RESET			Press ENTER key
EXPOSURE	BRIGHTNESS			0 ~ 20
	SHUTTER	AUTO	Lens Mode DC	INDOOR/OUTDOOR/DEBLUR
			Lens Mode Manual	NORMAL/DEBLUR
		MANUAL		NTSC : 1/30,60,120,250,500,1K,2K,4K,8K,15K,30K PAL : 1/25,50,100,200,400,800,1.6K,3.2K,6.4K,12.8K,25.6K
		FLICKER		
	SENS-UP			OFF/ X2/ X4/ X8 / X16 / X32
	AGC			0 ~ 10
BACKLIGHT				OFF
	HLC	LEVEL		0 ~ 20
		COLOR		BLK,WHT,YEL,CYN,GRN,MAG,RED,BLU
	BLC	H-POS		0 ~ 19
		V-POS		0 ~ 18
		H-SIZE		0 ~ 19
		V-SIZE		0 ~ 18
	WDR	WDR MODE		FRAME
		ROI MODE	OFF/ON	
			WINDOW ZONE	0 ~ 3
			WINDOW USE	OFF/ ON
			DET H-POS	0 ~ 240
			DET V-POS	0 ~ 135
			DET H-SIZE	0 ~ 240
			DET V-SIZE	0 ~ 135
		WEIGHT		LOW/ MIDDLE/ HIGH
DAY&NIGHT	AUTO	D>N THRES		1(bright) ~ 20(dark)
		N>D THRES		0(bright) ~ 19(dark)
		DELAY		0 ~ 15sec
		BURST		OFF/ON
		SMART IR	OFF/ON	
		SAT. LEVEL		(SMART IR : OFF) NOT USED
				(SMART IR : OFF) 0 ~ 20
				OFF/ON
			STROBE POLARITY	HIGH Fixed
			STROBE ALWAYS	OFF/ON
			STROBE DELAY	0X~400X 100US
			STROBE DUTY	10%, 20%, 30%, 40%, 50%
				OFF/ON
	COLOR	STROBE CONTROL	STROBE POLARITY	HIGH Fixed
			STROBE ALWAYS	OFF/ON
			STROBE DELAY	0X~400X 100US
			STROBE DUTY	10%, 20%, 30%, 40%, 50%
				OFF/ON
	B&W	BURST		OFF/ON
		SMART IR	OFF/ON	
		SAT. LEVEL		(SMART IR : OFF) NOT USED
				(SMART IR : OFF) 0 ~ 20
				OFF/ON
			STROBE POLARITY	HIGH Fixed
			STROBE ALWAYS	OFF/ON
			STROBE DELAY	0X~400X 100US
			STROBE DUTY	10%, 20%, 30%, 40%, 50%
	EXT.D&N	EXTERN SW		HIGH/LOW
		DELAY		0 ~ 15sec
		BURST		OFF/ON
		SMART IR		OFF/ON
		SAT. LEVEL		(SMART IR : OFF) NOT USED
				(SMART IR : OFF) 0 ~ 20
				OFF/ON
		STROBE CONTROL	STROBE POLARITY	HIGH Fixed
			STROBE ALWAYS	OFF/ON
			STROBE DELAY	0X~400X 100US
			STROBE DUTY	10%, 20%, 30%, 40%, 50%

SETUP MENU	SUB MENU 1	SUB MENU 2	SUB MENU 3	VALUE
WHITE BAL.	AWB	AUTO		
		AUTOext		
		PRESET		Press ENTER key
		MANUAL	C-TEMP.	3000K/ 5000K/ 8000K
			R-GAIN	0 ~ 20
			B-GAIN	0 ~ 20
	COLOR GAIN			0 ~ 20
DNR				OFF/ LOW/ MIDDLE/ HIGH
IMAGE	SHARPNESS			0 ~ 10
	GAMMA			0.45/ 0.55/ 0.65/ 0.75
	MIRROR			OFF/ON
	FLIP			OFF/ON
	FREEZE			OFF/ON
	H/W CAPTURE	CAP ENABLE		OFF/ON
		CAP POLARITY		FALLING/RISING
		CAP DELAY(10MS)		0 ~ 255(0ms ~ 2550ms)
		OFF SIGNAL		CONTACTS/TOGGLE
	D-ZOOM			1.0X ~ 16.0X
	DIS	OFF		
		ON	RANGE	10%/ 20% /30%
			FILTER	LOW/ MIDDLE/ HIGH
			AUTO C	OFF/ HALF/ FULL
	ACE			OFF/LOW/ MIDDLE/ HIGH
	DEFOG	OFF		
		ON	MODE	AUTO/MANUAL
			LEVEL	LOW/ MIDDLE/ HIGH
	SHADING	OFF		
		ON	WEIGHT	0~100%
	PRIVACY	BOX	OFF/ON	
			ZONE NUM	0 ~ 15
			ZONE DISP	OFF/ ON
			H-POS	0 ~ 60
			V-POS	0 ~ 34
			H-SIZE	0 ~ 60
			V-SIZE	0 ~ 34
			Y LEVEL	0 ~ 20
			CB LEVEL	0 ~ 20
			CR LEVEL	0 ~ 20
			TRANS	0 ~ 3
		POLYGON	OFF/ON	
			ZONE NUM	0 ~ 7
			ZONE DISP	OFF/ ON
			POS0-X ~ POS3-X	0 ~ 120
			POS0-Y ~ POS3-Y	0 ~ 68
			Y LEVEL	0 ~ 20
			CB LEVEL	0 ~ 20
			CR LEVEL	0 ~ 20
			TRANS	0 ~ 3
iMOTION	OFF			
	ON	DET WINDOW	WINDOW USE	0 ~ 3
			WINDOW ZONE	OFF/ ON
			DET H-POS	0 ~ 60
			DET V-POS	0 ~ 34
			DET H-SIZE	0 ~ 60
			DET V-SIZE	0 ~ 34
		SENSITIVITY		0 ~ 10
		ESTIMATE		OFF/ON
		QUICK ZOOM	OFF/ON	
			ZOOM SPEED	LOW/ MIDDLE/ HIGH
			TRACKING	OFF/ON
			REPEAT	OFF/ON
		MOTION OSD		OFF/ON
		TEXT ALARM		OFF/ ON
		SIGNAL OUT		OFF/ ON