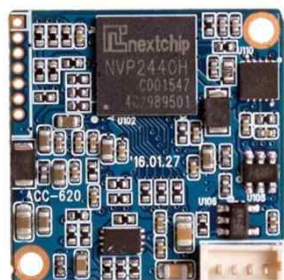
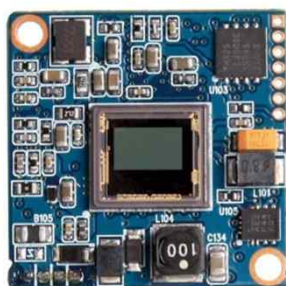


ACC-620

CMOS VIDEO MODULE



Main Features

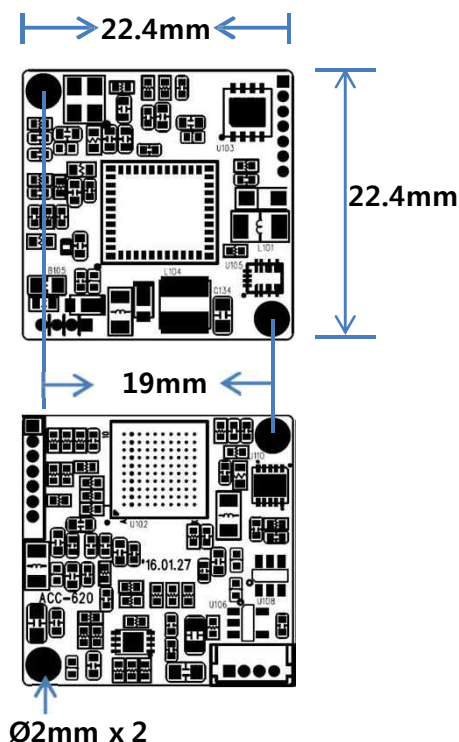
- 1/3" 1080p Panasonic CMOS Sensor
- 2.12M Pixels (1080p25/30, 1,000 TV Lines)
- Mountable Lens: Fixed & Pinhole Lens with Miniature Housing
- 3D-DNR, DSS (Sens-up) Supported
- UTC Supported
- AHD2.0 Camera (CVBS Out Mode Supported)
- CMOS AHD2.0 Video Module (22.4x22.4mm 1-board)



3D-DNR
CAMERA

AHD
CAMERA

Dimension



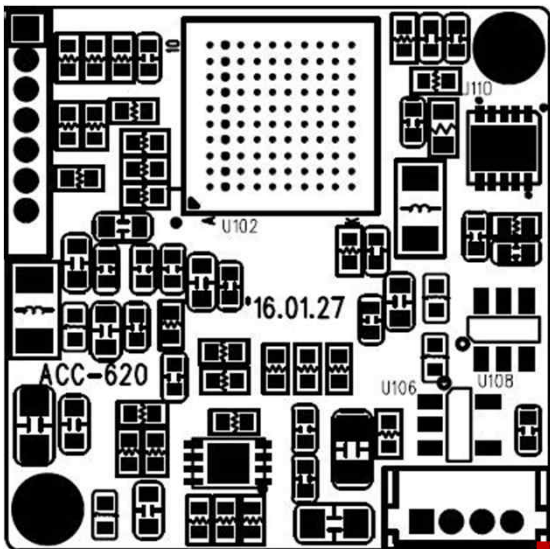
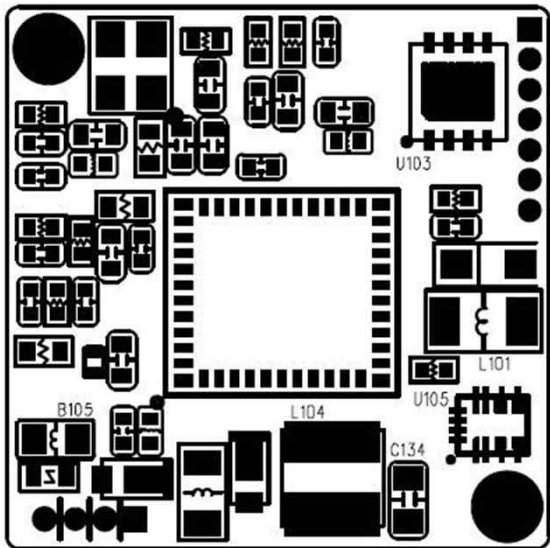
Specifications

Model	ACC-620
Signal System	AHD 2.0
Pickup Device	1/3"(D-6mm) 2.12M Panasonic CMOS Sensor
Scanning System	Progressive Scan (16:9)
Sync. System	Internal
Total Pixels	2.47MP [1956(H)x1266(V)]
Active Pixels	2.12MP [1944(H)x1092(V)]
Min. Illumination	0.2Lux(F2.5 – 30IRE), 0.006Lux(DSS on)
H-Resolution	More than 1,000TV Lines(H)
S/N Ratio	More than 50dB (AGC off)
Video Out (BNC)	AHD: 1080p@25/30 or CVBS 1.0V p.p
Lens	Option
Lens (Mount)	Fixed IRIS Lens (Board, Pinhole, Manual VF) via Miniature Case (M12)
OSD	Via UTC
Camera Title	Off, On(Max. 15 Characters)
Language	English, Russian, French, Spanish, Portuguese, German, Chinese(Simplified), Chinese(Traditional), Japanese, Korean, Italian, Polish, Dutch, Turkish, Hebrew, Arabic
Exposure	AE, Manual
White Balance	AWB, ATW, AWC->SET, Manual, Indoor, Outdoor
BLC	Off, BLC, HSBL
Day & Night Mode	AUTO, COLOR, B/W, EXT
Gain Control	AGC (1~15)
Electronic Shutter	1/25(30)~1/50,000sec
DSS(Sens-up)	Off, On(Max. X30)
Noise Reduction	2DNR, 3DNR
Mirror	Off, On(Mirror, Flip, Rotation)
Other Features	Motion Detection (4 Zone), Privacy Mask (4 Zones), Freeze, Neg. Image, Lens Shading, Defog etc.
Microphone	N/A
Power Source	DC 5~12V
Power Consumption	Less than 1.1 Watts (90mA@DC12V)
Operating Temp.	-10℃ ~ 55℃ (Humidity :0%RH ~ 90%RH)
Size (mm)	22.4x22.4 1-board
Weight	3 g (without OLPF)

ACC-620

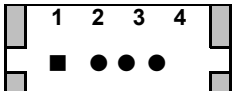
CMOS VIDEO MODULE

Pin Connections

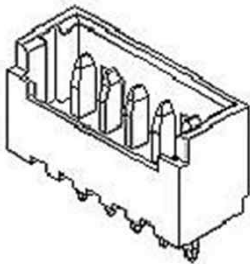


J102

J102



No.	Pin Item	No.	Pin Item
1	GND	2	VIDEO
3	GND	4	VCC (DC5~12V)



Wafer DIP type: 1.25mm pitch – 4 pin
Manufacturer: **Molex**
MFG Part Number: **53047-0410**