

# AHB-F1G0-2.5(O/R/OR)

## AHD2.0 MINIATURE CAMERA

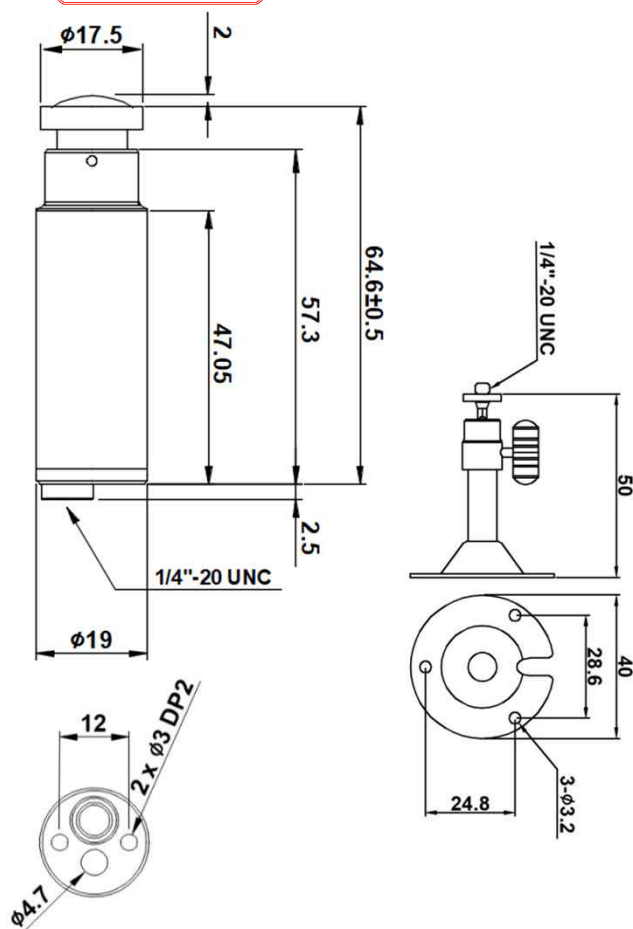


### Main Features

- 1/2.8" Sony 2.9μm Pixel Progressive Starvis Color CMOS Sensor
- Approx. 2.12 Mega Pixels (Max. 1080p)
- Fixed Board Lens
- WDR / 3D-DNR / DSS (Sense-up) / UTC Supported
- Built-in OSD & RS-485 Terminal Block Cable
- AHD2.0 Camera (CVBS Out Mode Supported)
- Pelco-D and Parantek Serial Protocol Supported (RS485 Control)
- Bullet Miniature Housing(19Ø)



### Dimension



### Option

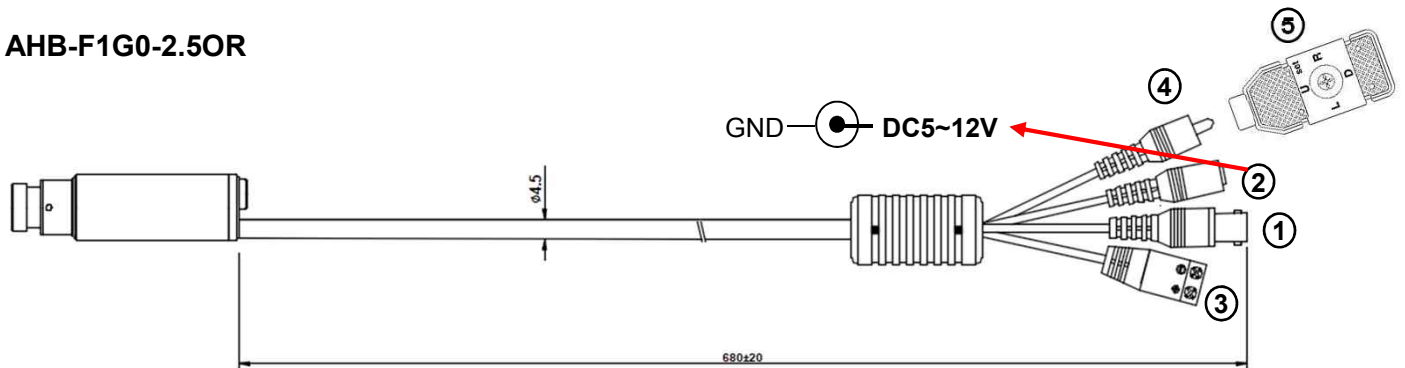
- Lens (Fixed)  
f=1.1 (Fish-eye 180°), 1.7, 2.1, 2.8, 3.3, 3.6, 4, 6, 8, 12, 16, 25mm

### Specifications

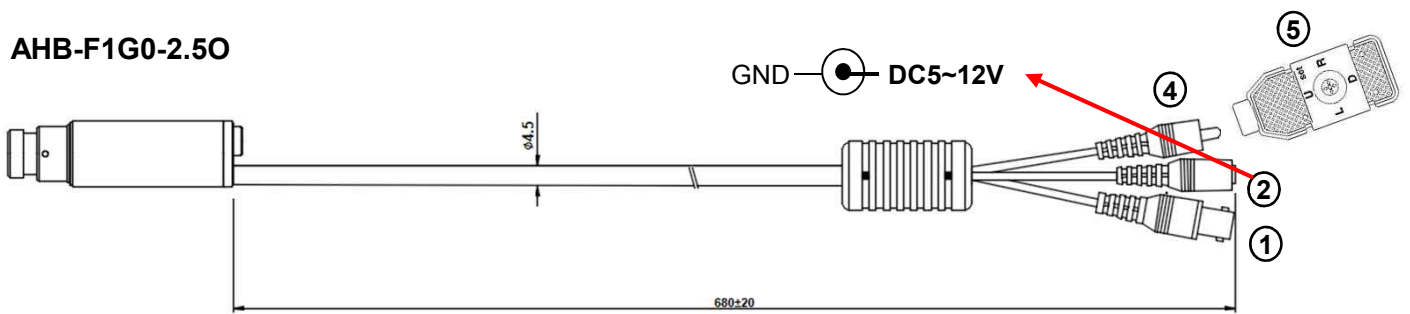
Model	AHB-F1G0-2.5(O/R/OR)
Signal System	AHD 2.0
Pickup Device	1/2.8"(D-6.46mm) 2.12M Sony CMOS Sensor
Scanning System	Progressive Scan (16:9)
Sync. System	Internal
Total Pixels	2.16MP [1,945(H)x1,109(V)]
Active Pixels	2.12MP [1,937(H)x1,097(V)]
Min. Illumination	0.01Lux(F2.5 - 30IRE), 0.0003Lux(DSS on)
Mechanical ICR	N/A
Video Out (1)	AHD: 1080p@25/30 or CVBS 1.0V p.p
Video Out (2)	N/A
Lens	Fixed f=2.5mm board type, F2.5
Lens (Mount)	Board type (M12)
Angle of View	143°(D), 120.5°(H), 66°(V)
OSD	Via UTC, Optional OSD Switch, Optional Serial Communication Port (with Terminal Block)
Camera Title	Off, On(Max. 8 Characters)
Language	English, Chinese(Simplified), Chinese(Traditional), Japanese, Korean
Exposure	AE, Manual
White Balance	AUTO, AUTOext, Preset, Manual
BLC	Off, HLC, BLC, WDR
Day & Night Mode	AUTO, COLOR, B/W
Gain Control	AGC (0~10)
Electronic Shutter	Auto, Manual, Flickerless
DSS(Sense-up)	X32
Noise Reduction	3DNR (Off, Low, Middle, High)
Mirror	Off, On(Mirror, Flip, Rotation)
Other Features	Motion Detection (4 Zones), Privacy Mask (16 Zones), ACE, D-Zoom, Defog, Gamma, Shading etc.
Communication	Pelco-D and Parantek Serial Protocol Supported RS-485 (Default: 9600bps, ID1)
Microphone	N/A
Power Source	DC 5-12V
Power Consumption	Less than 1.6 Watts (130mA@DC12V)
Operating Temp.	-10℃ ~ 55℃ (Humidity :0%RH ~ 90%RH)
Size (mm)	19Ø (Bullet Diameter)
Weight	AHB-F1G0-2.5OR: 159g / AHB-F1G0-2.5O: 152g AHB-F1G0-2.5R: 133g / AHB-F1G0-2.5: 119g

# Cable Connection Interface

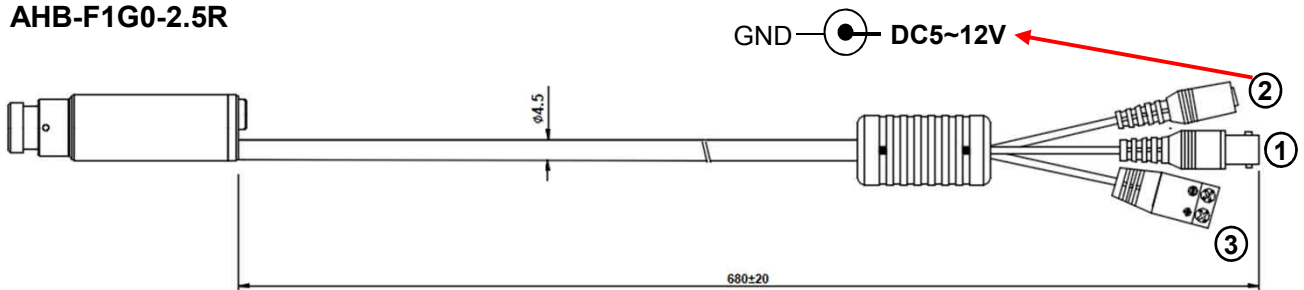
**AHB-F1G0-2.50R**



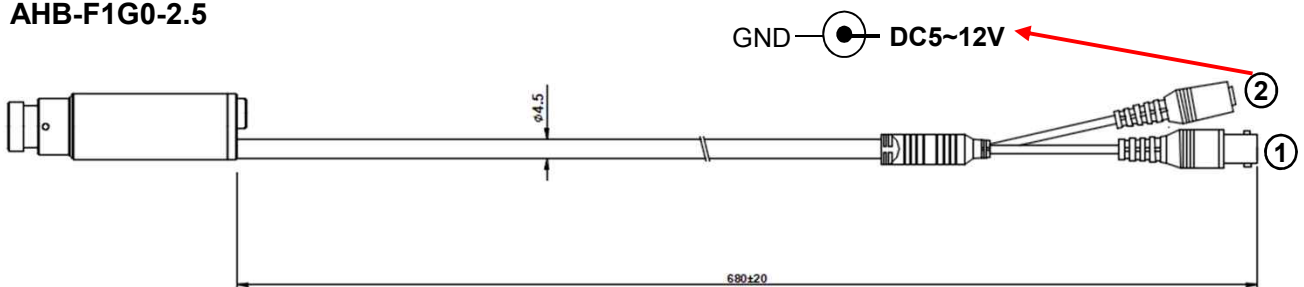
**AHB-F1G0-2.50**



**AHB-F1G0-2.5R**



**AHB-F1G0-2.5**



	Function		Function
①	BNC – AHD Analog Out	②	DC 3.5phi – DC Power In
③	2pin Terminal Block – RS485 (+/-)	④	DC 2.5phi – AD OSD port
⑤	AD type OSD Joystick		

SETUP MENU	SUB MENU 1	SUB MENU 2	SUB MENU 3	VALUE
EXPOSURE	BRIGHTNESS			0 ~ 20 <b>(10)</b>
	SHUTTER	AUTO		<b>NORMAL</b> /DEBLUR
		MANUAL		NTSC : <b>1/30</b> ,60,120,250,500,1K,2K,4K,8K,15K,30K PAL : <b>1/25</b> ,50,100,200,400,800,1.6K,3.2K,6.4K,12.8K,25.6K
		FLICKER		
	SENS-UP			<b>OFF</b> / X2/ X4/ X8 / X16 / X32
	AGC			0 ~ 10 <b>(8)</b>
BACKLIGHT	OFF			
	HLC	LEVEL		0 ~ 20 <b>(10)</b>
		COLOR		<b>BLK</b> ,WHT,YEL,CYN,GRN,MAG,RED,BLU
	BLC	H-POS		0 ~ 20 <b>(6)</b>
		V-POS		0 ~ 20 <b>(5)</b>
		H-SIZE		0 ~ 20 <b>(7)</b>
		V-SIZE		0 ~ 20 <b>(7)</b>
	WDR	WEIGHT		LOW/ <b>MIDDLE</b> / HIGH
DAY&NIGHT	AUTO	D>N THRES		0(bright) ~ 20(dark) <b>(13)</b>
		N>D THRES		0(bright) ~ 20(dark) <b>(7)</b>
		DELAY		0 ~ 9sec, 10sec, 15sec <b>(0 Sec)</b>
		BURST		OFF/ <b>ON</b>
	COLOR			
	B&W	BURST		OFF/ON
WHITE BAL	AWB	AUTO		
		AUTOext		
		PRESET		Press ENTER key
		MANUAL	C-TEMP.	3000K/ <b>5000K</b> / 8000K
			R-GAIN	0 ~ 20 <b>(10)</b>
			B-GAIN	0 ~ 20 <b>(10)</b>
	COLOR GAIN			0 ~ 20 <b>(10)</b>
DNR				OFF/ LOW/ <b>MIDDLE</b> / HIGH
IMAGE	SHARPNESS			0 ~ 10 <b>(8)</b>
	GAMMA			0.45/ <b>0.55</b> / 0.65/ 0.75
	MIRROR			<b>OFF</b> /ON
	FLIP			<b>OFF</b> /ON
	D-ZOOM			1.0X~16.0X <b>(1.0X)</b>
	ACE			<b>OFF</b> /LOW/ MIDDLE/ HIGH
	DEFOG	OFF		
		ON	MODE	<b>AUTO</b> /MANUAL
			LEVEL	LOW/ <b>MIDDLE</b> / HIGH
	SHADING	<b>OFF</b>		
		ON	WEIGHT	0~100% <b>(100%)</b>

SETUP MENU	SUB MENU 1	SUB MENU 2	SUB MENU 3	VALUE
IMAGE	PRIVACY	BOX	OFF/ON	
			ZONE NUM	0~15
			ZONE DISP	OFF/ON
			H-POS	0~60
			V-POS	0~34
			H-SIZE	0~60
			V-SIZE	0~34
			Y LEVEL	0~20
			CB LEVEL	0~20
			CR LEVEL	0~20
			TRANS	0~3
		POLYGON	OFF/ON	
			ZONE NUM	0~7
			ZONE DISP	OFF/ON
			POS0-X ~POS3-X	0~120
			POS0-Y~POS3-Y	0~68
			Y LEVEL	0~20
			CB LEVEL	0~20
			CR LEVEL	0~20
			TRANS	0~3
MOTION	OFF			
	ON	DET WINDOW	WINDOW USE	0~3
			WINDOW ZONE	OFF/ON
			DET H-POS	0~60
			DET V-POS	0~34
			DET H-SIZE	0~60
			DET V-SIZE	0~34
		SENSITIVITY		0~10 (5)
		MOTION OSD		OFF/ON
		TEXT ALARM		OFF/ON
SYSTEM	COMM	CAM ID		0 ~ 255 (1)
		BAUDRATE		2400,4800,9600,57600,115200
		CAM ID DISPLAY		OFF/ON
	OUTPUT	FRAME RATE		1080_30p(25p)
		FREQ		50Hz(PAL) / 60Hz(NTSC)
		ANALOG MODE		OFF / CVBS / HD_T / HD_C / HD_A
		CVBS OUT MODE		CUT / FULL
	LANGUAGE			ENG/ CHINESE/ CHINESE(S)/ JAPANESE/ KOR
	CAM TITLE	OFF		
		RIGHT UP		0 ~ 9, A ~ Z, blank
		LEFT DOWN		0 ~ 9, A ~ Z, blank
FACTORY DEFAULT				Reset to factory setting
EXIT				Exit SETUP menu