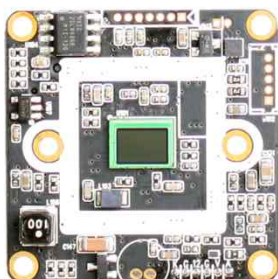


# ACC-730

## CMOS VIDEO MODULE

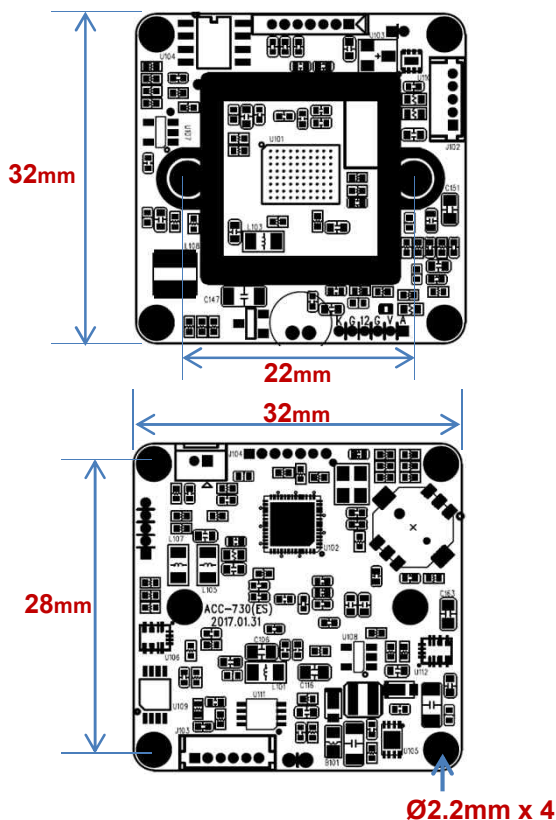


### Main Features

- 1/2.9" 2.8μm Sony Exmor Progressive CMOS Sensor
- 2M Pixels (1080p 25/30)
- Mountable Lens: Fixed, Pinhole, Manual VF Lens
- ICR Mechanism Available
- 2D-DNR Supported
- Built-in OSD Switch (AD type Supported)
- UTC Supported
- AHD2.0 Camera
- CMOS AHD2.0 Video Module (32x32mm 1-board)



### Dimension



### Option

- Mechanical ICR
- Lens

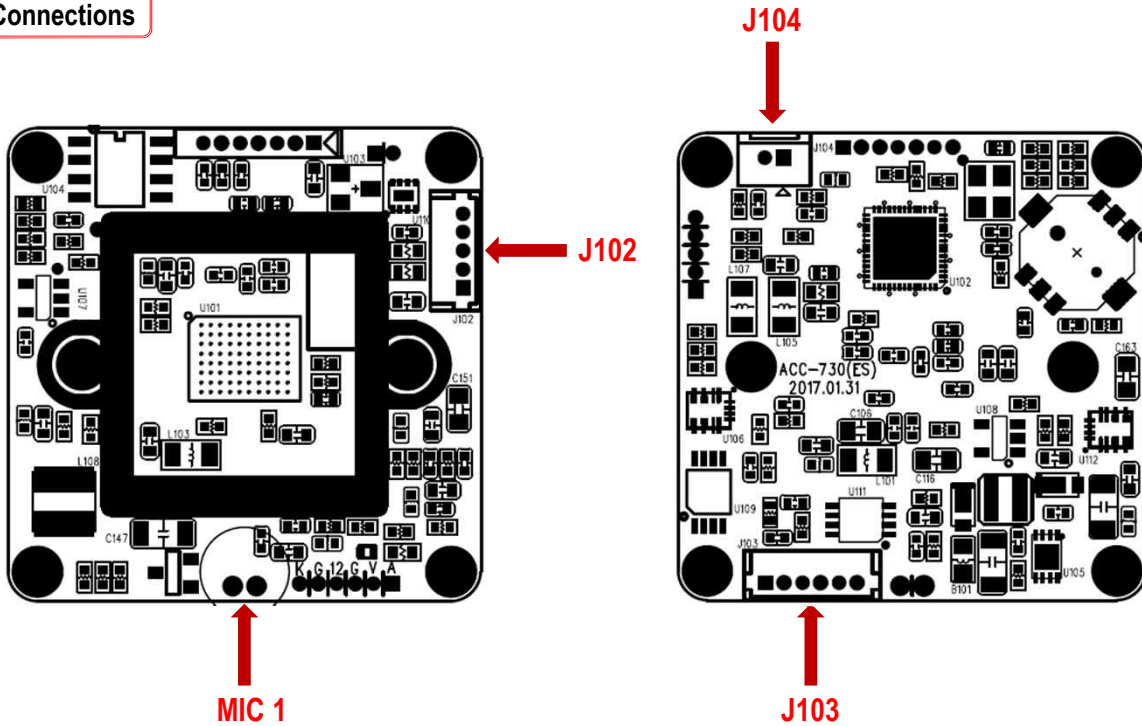
### Specifications

Model	ACC-730
Signal System	AHD 2.0
Pickup Device	1/2.9"(D-6.23mm) 2.19M Sony CMOS Sensor
Scanning System	Progressive Scan (16:9)
Sync. System	Internal
Total Pixels	2.24MP [2,000(H)x1,121(V)]
Active Pixels	2.19MP [1,985(H)x1,105(V)]
Min. Illumination	0.2Lux(F2.5 – 30IRE), 0.1Lux(ICR on)
Mechanical ICR	Available (Option)
H-Resolution	More than 1,000TV Lines(H)
S/N Ratio	More than 50dB (AGC off)
Video Out (BNC)	AHD: 1080p@25/30 or other Analog HD Formats
Lens	Option
Lens (Mount)	Fixed IRIS Lens Board, Pinhole, VF type – M12 & Ø14
OSD	Via 5-direction Tact-switch or UTC
Camera Title	N/A
Language	English, Russian, French, Spanish, Portuguese, German, Chinese(Simplified), Chinese(Traditional), Japanese, Italian, Polish, Dutch, Turkish
Exposure	Auto (ELC)
White Balance	ATW, AWC->SET, Manual, Indoor, Outdoor
BLC	Off, BLC, HSBL
Day & Night Mode	AUTO, COLOR, B/W, EXT
Gain Control	AGC (1~15)
Electronic Shutter	1/25(30)~1/50,000sec
DSS(Sens-up)	N/A
Noise Reduction	2DNR
Mirror	Off, On(Mirror, Flip, Rotation)
Other Features	Lens Shading etc.
Microphone	Available (Option: ACC-730A)
Power Source	DC 12V
Power Consumption	Less than 0.72 Watts (60mA@DC12V)
Operating Temp.	-10℃ ~ 55℃ (Humidity :0%RH ~ 90%RH)
Size (mm)	32x32 1-board
Weight	4.5 g (without OLPF)

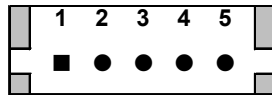
# ACC-730

## CMOS VIDEO MODULE

### Pin Connections



### J102 – IR LED Board



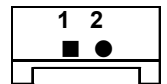
No.	Pin Item	No.	Pin Item
1	DC12V	4	DC 3.3V
2	GND	5	LED CTL
3	EXT D&N		

Wafer DIP type: **1.25mm pitch – 5 pin**

Manufacturer: **Molex**

MFG Part Number: **53047-0510**

### J104 – TDN ICR



No.	Pin Item	No.	Pin Item
1	ICR (+)	2	ICR (-)

Wafer DIP type: **1.25mm pitch – 2 pin**

Manufacturer: **Yeonho**

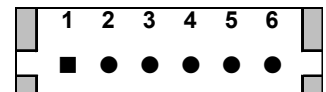
MFG Part Number: **12512WS-02B**

### MIC 1 - Audio



No.	Pin Item	No.	Pin Item
1	MIC IN	2	GND

### J103 – Input/Output



No.	Pin Item	No.	Pin Item
1	AUDIO OUT	4	DC12V
2	VIDEO	5	GND
3	GND	6	AD KEY

Wafer DIP type: **1.25mm pitch – 4 pin / 6 pin**

Manufacturer: **Molex**

MFG Part Number: **53047-0410 / 0610**

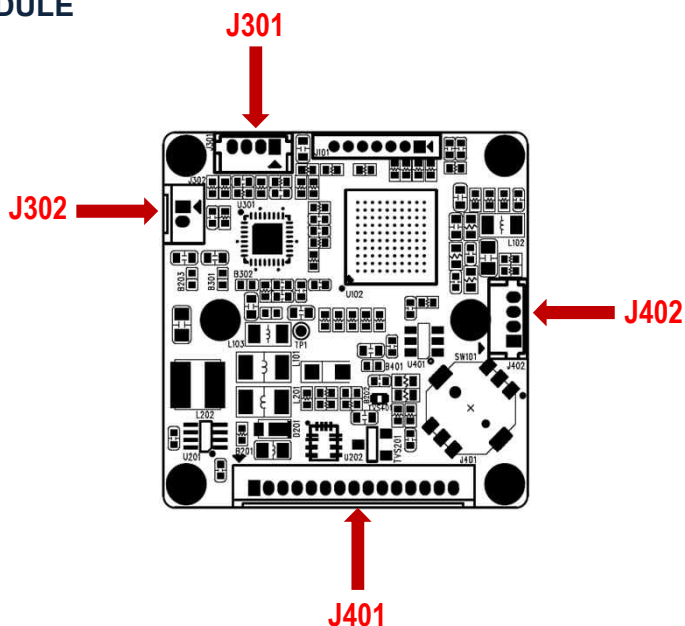
SETUP MENU	SUB MENU1	SUB MENU2	SUB MENU3	SUB MENU4	VALUE
EXPOSURE	SHUTTER				AUTO, 1/25(30), 1/50(60), FLK, 1/200(240), 1/400(480), 1/1000, 1/2000, 1/5000, 1/10000, 1/50000
	AGC				0 ~ 15
	BRIGHTNESS				1~100
	D-WDR	OFF			
		AUTO			
		ON	LEVEL		0~15
BACKLIGHT	OFF				
	BLC	LEVEL			LOW, MIDDLE, HIGH
		AREA			
		DEFAULT			
	HSBLC	SELECT			AREA1, AREA2, AREA3, AREA4,
		DISPLAY			ON, OFF
		BLACK MASK			ON, OFF
		LEVEL			0~100
		MODE	ALL DAY		
			NIGHT	AGC LEVEL	0~255
		DEFAULT			
WHITE BALANCE	ATW				
	AWC -> SET				
	INDOOR				
	OUTDOOR				
	MANUAL	BLUE			0~100
		RED			0~100
DAY & NIGHT	COLOR				
	B/W	IR SMART	OFF		
			ON	LEVEL	0~15
		AREA			
		IR PWM			0~100
	EXT	D->N (DELAY)			0~60
		N->D (DELAY)			0~60
	AUTO	D->N (AGC)			2~255
		D->N (DELAY)			1~60
		N->D (AGC)			1~254
		N->D (DELAY)			1~60

SETUP MENU	SUB MENU1	SUB MENU2	SUB MENU3	SUB MENU4	VALUE
<b>NR</b>	2DNR				OFF, LOW, MIDDLE, HIGH
<b>SPECIAL</b>	MIRROR				OFF, MIRROR, V-FLIP, ROTATE
	DPC	LIVE DPC	OFF		
			ON	AGC LEVEL	0~255
				LEVEL	0~100
		WHITE DPC	OFF		
			ON	POS/SIZE	
				START	
				DPC VIEW	ON, OFF
				LEVEL	0~60
				AGC	0~14
		BLACK DPC	OFF		
			ON	POS/SIZE	
				START	
				DPC VIEW	ON, OFF
				LEVEL	0~60
	LANGUAGE				ENG, CHN1, CHN2, GER, FRA, ITA, SPA, POL, RUS, POR, NED, TUR, JPN
<b>ADJUST</b>	SHARPNESS	OFF			
		AUTO	LEVEL		0~10
			START AGC		0~255
			END AGC		0~255
	MONITOR	GAMMA			0.45, 0.50, 0.55, 0.60, 0.65, 0.70, 0.75, 0.80, 0.85, 0.90, 0.95, 1.00, USER
		BLUE GAIN			0~100
		RED GAIN			0~100
	LSC				ON, OFF
	OUTPUT MODE	FORTMAT			AHD, CHD, THD
		FRAME RATE			25P, 30P
<b>EXIT</b>	SAVE & END				Exit SETUP menu without saving
	RESET				Reset to factory setting
	NOT SAVE				Exit SETUP menu after saving

# ACC-730

## CMOS VIDEO MODULE

### Pin Connections



Model	J401 (15P) Multi-Pin	J302 (2P) ICR	J301 (4P) IRIS	J402 (4P) IR
ACC-730(F)	4P	-	-	-
ACC-730(FO) AD	7P	-	-	-
ACC-730(FO) GPIO	11P	-	-	-
ACC-730(TF)	4P	2P	-	4P
ACC-730(TFO) AD	7P	2P	-	4P
ACC-730(TFO) GPIO	11P	2P	-	4P
ACC-730(TF) Amt	15P	2P	-	4P
ACC-730(V)	4P	-	4P	-
ACC-730(VO) AD	7P	-	4P	-
ACC-730(VO) GPIO	11P	-	4P	-
ACC-730(VO) LPR	11P	-	4P	4P
ACC-730(RC)	4P	2P	4P	4P
ACC-730(RCO) AD	7P	2P	4P	4P
ACC-730(RCO) GPIO	11P	2P	4P	4P
ACC-730(RCO) Amt	15P	2P	4P	4P
ACC-730(B)	15P	2P	4P	2P (3/4pin)