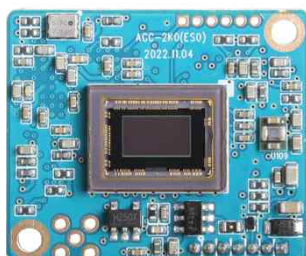


# DCC-2K0

## CMOS VIDEO MODULE

PARANTEK

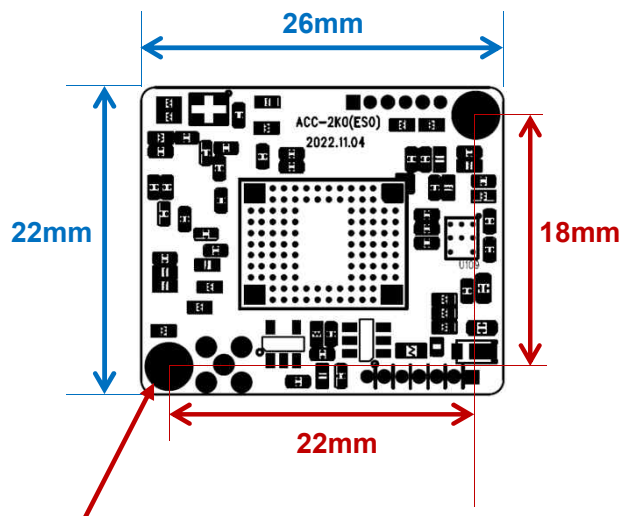


### Main Features

- 1/2.8" Sony 2.9µm Pixel Progressive Starvis Color CMOS Sensor
- Approx. 2.12 Mega Pixels (Max. 1080p)
- Mountable Lens: Fixed IRIS Lenses
- WDR / 3D-DNR / DSS (Sens-up) Supported
- AD type OSD Port Supported
- Pelco-D and Parantek Serial Protocol Supported (UART 3.3V TTL)
- 3G-SDI Video Output (Analog Video Output Supported)
- Running Voltage: DC5V
- CMOS Video Module (26x22mm 1-board)



### Dimension



Ø3.5(2.1mm hole x 2.1)  
PCB Coordinate  
(11, 9) (-11, -9)

PCB T=1.2mm

### Specification

Model	DCC-2K0
Signal System	3G-SDI (Serial Data Interface) or EX-SDI
Pickup Device	1/2.8"(D-6.46mm) 2.12M Sony CMOS Sensor
Scanning System	Progressive Scan (16:9)
Sync. System	Internal
Total Pixels	2.16MP [1,945(H)x1,109(V)]
Active Pixels	2.12MP [1,937(H)x1,097(V)]
Min. Illumination	0.01Lux(F2.5 - 30IRE), 0.0003Lux(DSS on)
Mechanical ICR	N/A
Video Out (1)	3G-SDI: 1080p25/30/50/60, 720p25/30/50/60, 1080i50/60 Or EX-SDI: 1080p25/30/50/60, 720p25/30/50/60, 1080i50/60
Video Out (2)	AHD, TVI, CVI or Analog CVBS AHD, TVI and CVI: 1080p@25/30 / Analog CVBS: D1
Lens	Fixed IRIS Lens
Lens (Mount)	N/A
OSD	Via AD type OSD or Serial Communication Port
Camera Title	Off, On(Max. 8 Characters)
Language	English, Chinese(Simplified), Chinese(Traditional), Japanese, Korean
Exposure	AE, Manual
White Balance	AUTO, AUTOext, Preset, Manual
BLC	Off, HLC, BLC, WDR
Day & Night Mode	AUTO, COLOR, B/W
Gain Control	AGC (0~10)
Electronic Shutter	Auto, Manual, Flickerless
DSS(Sens-up)	X32
Noise Reduction	3DNR (Off, Low, Middle, High)
Mirror	Off, On(Mirror, Flip, Rotation)
Other Features	Motion Detection (4 Zones), Privacy Mask (16 Zones), ACE, D-Zoom, Defog, Gamma, Shading etc.
Communication	Pelco-D and Parantek Serial Protocol Supported <b>RS-232C TTL 3.3V (Default: 9600bps, ID1)</b>
Microphone	N/A
Power Source	<b>DC 5V</b>
Power Consumption	Less than 1.4 Watts (280mA@DC5V)
Operating Temp.	-10℃ ~ 55℃ (Humidity :0%RH ~ 90%RH)
Size (mm)	<b>26x22 1-board</b>
Weight	3.5 g (without OLPF)

### Option

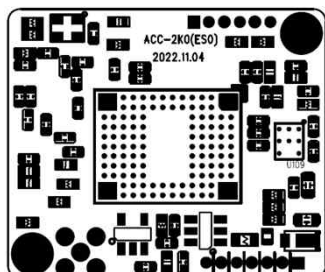
- OLPF

# DCC-2K0

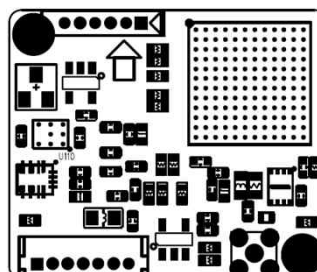
## CMOS VIDEO MODULE

### Pin Connections

Top



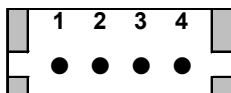
Bottom



J101

J103

#### J101



No.	Pin Item	No.	Pin Item
1	DC 5V In	3	Analog Video Out
2	GND	4	AD KEY In (OSD) or N/C

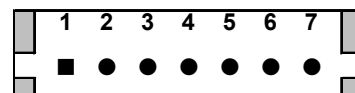
Wafer DIP type: 1.25mm pitch – 4 pin

Manufacturer: Molex

MFG Part Number: 53047-0410

< DCC-2K0-4P >

#### J101



No.	Pin Item	No.	Pin Item
1	DC 5V In	5	GND
2	GND	6	UART TX 3.3V TTL Out
3	Analog Video Out	7	UART RX 3.3V TTL In
4	AD KEY In (OSD) or N/C		

Wafer DIP type: 1.25mm pitch – 7 pin

Manufacturer: Molex

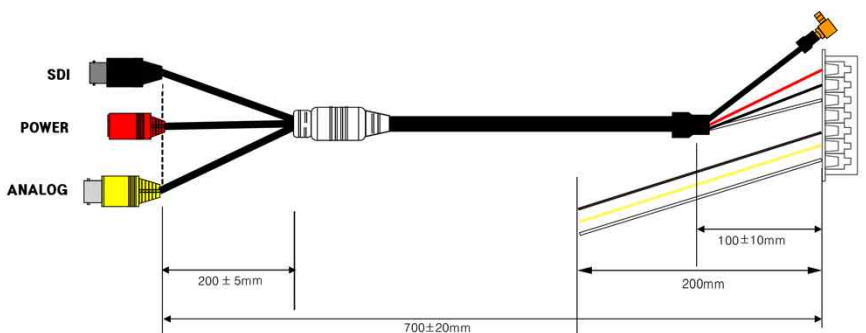
MFG Part Number: 53047-0710

< DCC-2K0-7P >

#### J103 – MMCX for SDI Output

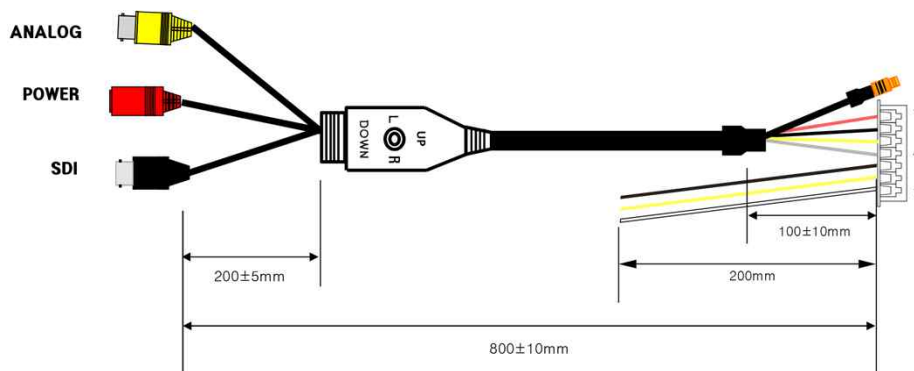
Cable option for DCC-2K0-7P

C. SDI(A)-VP 7P RSK  
(ParanTek Item No. 4000134)



Cable option for DCC-2K0-7P

C. SDI(BN)-JVP 7P RSK  
(ParanTek Item No. 4000136)



SETUP MENU	SUB MENU 1	SUB MENU 2	SUB MENU 3	VALUE
EXPOSURE	BRIGHTNESS			0 ~ 20 <b>(10)</b>
	SHUTTER	AUTO		<b>NORMAL</b> /DEBLUR
		MANUAL		NTSC : <b>1/30</b> ,60,120,250,500,1K,2K,4K,8K,15K,30K PAL : <b>1/25</b> ,50,100,200,400,800,1.6K,3.2K,6.4K,12.8K,25.6K
		FLICKER		
	SENS-UP			<b>OFF</b> / X2/ X4/ X8 / X16 / X32
	AGC			0 ~ 10 <b>(8)</b>
BACKLIGHT	OFF			
	HLC	LEVEL		0 ~ 20 <b>(10)</b>
		COLOR		<b>BLK</b> ,WHT,YEL,CYN,GRN,MAG,RED,BLU
	BLC	H-POS		0 ~ 20 <b>(6)</b>
		V-POS		0 ~ 20 <b>(5)</b>
		H-SIZE		0 ~ 20 <b>(7)</b>
		V-SIZE		0 ~ 20 <b>(7)</b>
	WDR	WEIGHT		LOW/ <b>MIDDLE</b> / HIGH
DAY&NIGHT	AUTO	D>N THRES		0(bright) ~ 20(dark) <b>(13)</b>
		N>D THRES		0(bright) ~ 20(dark) <b>(7)</b>
		DELAY		0 ~ 9sec, 10sec, 15sec <b>(0 Sec)</b>
		BURST		OFF/ <b>ON</b>
	COLOR			
	B&W	BURST		OFF/ON
WHITE BAL	AWB	AUTO		
		AUTOext		
		PRESET		Press ENTER key
		MANUAL	C-TEMP.	3000K/ <b>5000K</b> / 8000K
			R-GAIN	0 ~ 20 <b>(10)</b>
			B-GAIN	0 ~ 20 <b>(10)</b>
	COLOR GAIN			0 ~ 20 <b>(10)</b>
DNR				OFF/ LOW/ <b>MIDDLE</b> / HIGH
IMAGE	SHARPNESS			0 ~ 10 <b>(8)</b>
	GAMMA			0.45/ <b>0.55</b> / 0.65/ 0.75
	MIRROR			<b>OFF</b> /ON
	FLIP			<b>OFF</b> /ON
	D-ZOOM			1.0X~16.0X <b>(1.0X)</b>
	ACE			<b>OFF</b> /LOW/ <b>MIDDLE</b> / HIGH
	DEFOG	OFF		
		ON	MODE	<b>AUTO</b> /MANUAL
			LEVEL	LOW/ <b>MIDDLE</b> / HIGH
	SHADING	<b>OFF</b>		
		ON	WEIGHT	0~100% <b>(100%)</b>

SETUP MENU	SUB MENU 1	SUB MENU 2	SUB MENU 3	VALUE
IMAGE	PRIVACY	BOX	OFF/ON	
			ZONE NUM	0~15
			ZONE DISP	OFF/ON
			H-POS	0~60
			V-POS	0~34
			H-SIZE	0~60
			V-SIZE	0~34
			Y LEVEL	0~20
			CB LEVEL	0~20
			CR LEVEL	0~20
			TRANS	0~3
		POLYGON	OFF/ON	
			ZONE NUM	0~7
			ZONE DISP	OFF/ON
			POS0-X ~POS3-X	0~120
			POS0-Y~POS3-Y	0~68
			Y LEVEL	0~20
			CB LEVEL	0~20
			CR LEVEL	0~20
			TRANS	0~3
MOTION	OFF			
	ON	DET WINDOW	WINDOW USE	0~3
			WINDOW ZONE	OFF/ON
			DET H-POS	0~60
			DET V-POS	0~34
			DET H-SIZE	0~60
			DET V-SIZE	0~34
		SENSITIVITY		0~10 (5)
SYSTEM	COMM	CAM ID		0 ~ 255 (1)
		BAUDRATE		2400,4800,9600,57600,115200
		CAM ID DISPLAY		OFF/ON
	OUTPUT	FRAME RATE	HD-SDI	1080_30p(25p), 720_30p(25p), 720_60p(50p), 1080_60i(50i)
			EX-SDI	1080_30p(25p), 720_30p(25p), 720_60p(50p), 1080_60i(50i), 1080_60p(50p)
		FREQ		50Hz(PAL) / 60Hz(NTSC)
		SDI MODE		HD-SDI / EX-SDI
		SDI OUT MODE	EX-SDI	135M(V2.0) / 135M+(V2.1) / 270M(V1.0)
			HD-SDI	Fixed [1.5G]
			1080p60(50)	Fixed [270M]
		ANALOG MODE		OFF / CVBS / HD_T / HD_C / HD_A
		CVBS OUT MODE		CUT / FULL
	LANGUAGE			ENG/ CHINESE/ CHINESE(S)/ JAPANESE/ KOR
	CAM TITLE	OFF		
		RIGHT UP		0 ~ 9, A ~ Z, blank
		LEFT DOWN		0 ~ 9, A ~ Z, blank
FACTORY DEFAULT				Reset to factory setting
EXIT				Exit SETUP menu