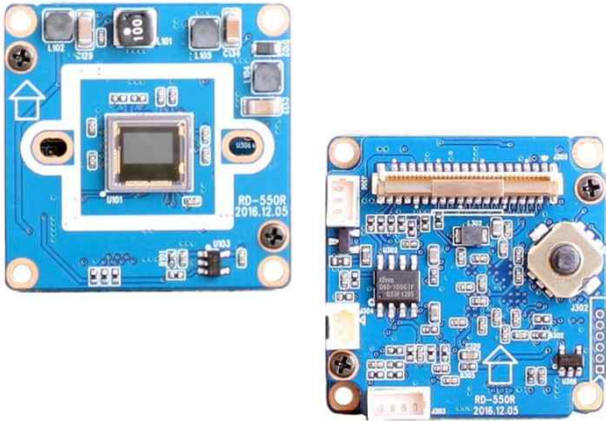
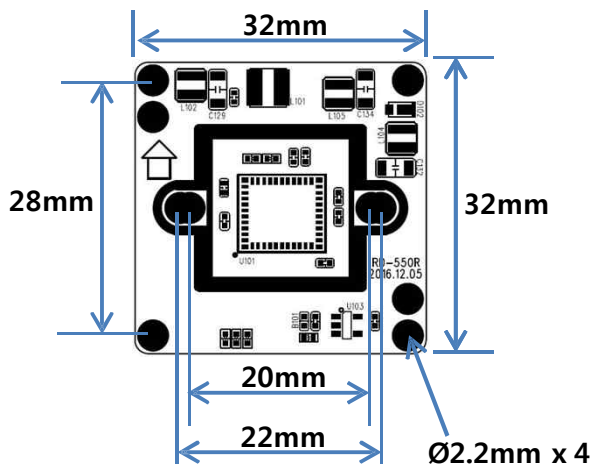


DCC-750

CMOS VIDEO MODULE



Dimension



Option

- Lens

Main Features

- 1/3" 2.1M(1080P) Panasonic Color CMOS Image Sensor
- 2.1Mega Pixels (1080P25/30/50/60)
- Mountable Lens: Fixed, DC Auto VF, DC Auto ICR VF Lens
- WDR, DSS, 3D-NR Supported
- 1080p Digital Video(BT.1120) Out
- Pelco-D and Parantek Protocol Compatible(UART Control)
- H/V Sync Signal & Composite Video Out Available
- CMOS Video Module (32x32mm 2-board)



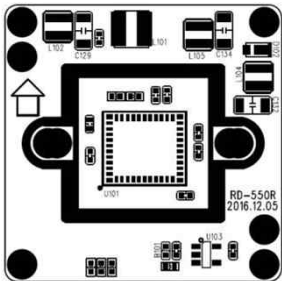
Specifications

Model	DCC-750
Pickup Device	1/3"(D-6.09mm) 2.12M Panasonic CMOS Sensor
Scanning System	Progressive Scan (16:9)
Sync. System	Internal
Total Pixels	2.22M [2010(H)x1108(V)]
Effective Pixels	2.12M [1944(H)x1092(V)]
Min. Illumination	0.03Lux(F2.5-30IRE),0.015Lux(ICR on),0.001Lux(DSS on)
Mechanical ICR	Available (Option)
S/N Ratio	More than 50dB (AGC off)
Video Out 1	BT.1120 - 1080p@25/30/50/60, 720p@25/30/50/60 (0.5mm pitch 36pin FFC Connector)
Video Out 2	Composite Video 1V p.p (NTSC/PAL - 75Ω)
Lens	Option
Lens (Mount)	Board/Pinhole Mount(M12), VF Mount(D14), C/CS Mount
OSD	Via 5-direction Tact-switch
Camera Title	Off, On(Max. 10 Characters)
Language	English, Chinese(Simplified), Chinese(Traditional), Japanese, Korean
Exposure	DC, Manual
White Balance	AWB, ATW, Hold(Push), Manual
BLC	Off, HLC, BLC, WDR * WDR is not operated when manual shutter mode or CVBS output mode is selected.
Day & Night Mode	AUTO, COLOR, B/W
Gain Control	AGC (0~20)
Electronic Shutter	1/25(30)~1/30,000sec
Noise Reduction	3DNR (Off, Low, Middle, High)
DSS(Sens-up)	X32
Mirror	Off, On(Mirror, Flip)
Other Features	Motion Detection (4 Zones), Privacy Mask (16 Zones), Flickerless, Lens Shading, Gamma, D-zoom, Defog etc.
Communication	RS232C-TTL 3.3V(Pelco-D, Parantek protocol) Default: 9600bps
No. of Camera ID	Up to 255
Signal Out	H/V Sync Signal Out (via Digital Connector)
Power Source	DC9V ~ 15V
Power Consumption	Less than 2.4 Watts (200mA)
Operating Temp.	-10℃ ~ 55℃ (Humidity :0%RH ~ 90%RH)
Size (mm)	32(W) x 32(D) – 2 board
Weight	18 g (without OLPF)

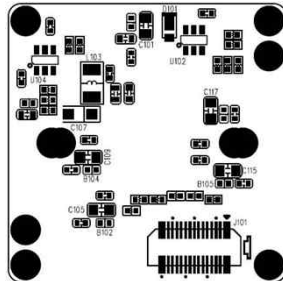
DCC-750

CMOS VIDEO MODULE

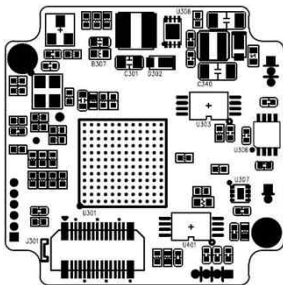
Pin Connections



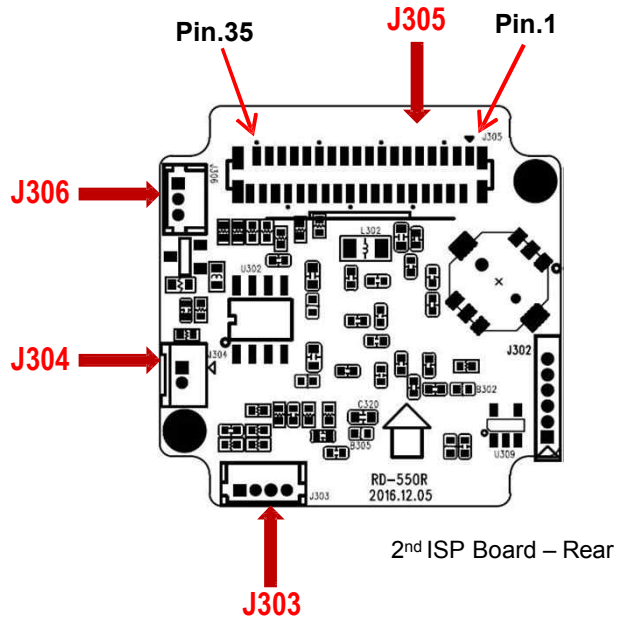
1st Sensor Board – Front



1st Sensor Board – Rear

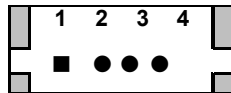


2nd ISP Board – Front



2nd ISP Board – Rear

J303 – DC IRIS



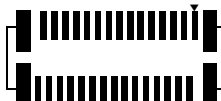
No.	Pin Item	No.	Pin Item
1	DAMP+	3	DRV+
2	DAMP-	4	GND

Wafer DIP type: 1.25mm pitch – 4pin

Manufacturer: **Molex**

MFG Part Number: **53047-0410**

J305 – BT.1120 & Etc.



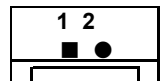
No.	Pin Item	No.	Pin Item	No.	Pin Item	No.	Pin Item
1	GND	10	Y-OUT [7]	19	C-OUT [6]	28	GND
2	Y-OUT [0]	11	GND	20	C-OUT [7]	29	GND
3	Y-OUT [1]	12	C-OUT [0]	21	GND	30	GND
4	Y-OUT [2]	13	C-OUT [1]	22	VSYNC	31	DC IN
5	Y-OUT [3]	14	C-OUT [2]	23	HSYNC	32	DC IN
6	GND	15	C-OUT [3]	24	GND	33	DC IN
7	Y-OUT [4]	16	GND	25	PCLK	34	GND
8	Y-OUT [5]	17	C-OUT [4]	26	GND	35	TXD (3.3V)
9	Y-OUT [6]	18	C-OUT [5]	27	GND	36	RXD (3.3V)

SMD type: 0.5mm pitch – 36 pin

Manufacturer: **Hirose**

MFG Part Number: **FH12-36S-0.5SV**

J304 – TDN ICR



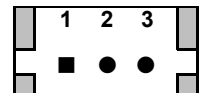
No.	Pin Item	No.	Pin Item
1	ICR (+)	2	ICR (-)

Wafer DIP type: 1.25mm pitch – 2pin

Manufacturer: **Yeonho**

MFG Part Number: **12512WS-02B**

J306 – Power & CVBS



No.	Pin Item	No.	Pin Item
1	CVBS	3	DC12V
2	GND		

Wafer DIP type: 1.25mm pitch – 3pin

Manufacturer: **Molex**

MFG Part Number: **53047-0310**