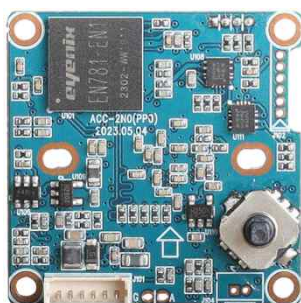
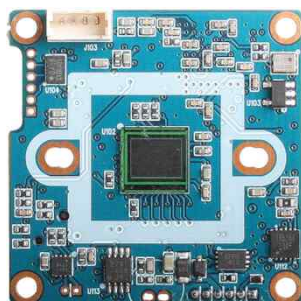


# ACC-2N0

## CMOS VIDEO MODULE



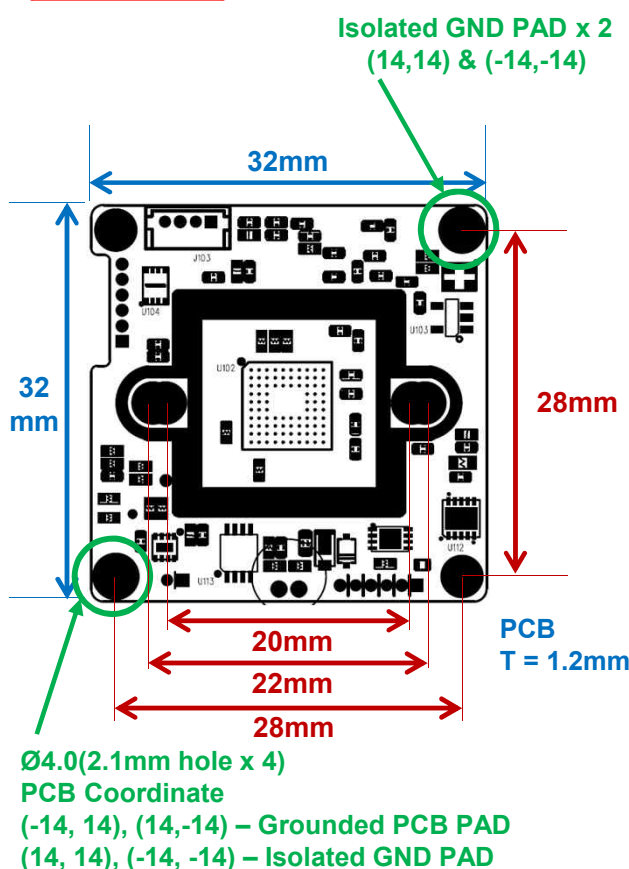
### Main Features

- 1/2.8" Sony 2.0μm Pixel Progressive Starvis Color CMOS Sensor
- Approx. 5.11 Mega Pixels (Max. 1944p)
- Mountable Lens: Fixed, Pinhole, C/CS, Manual VF Lens
- WDR / 3D-DNR / DSS (Sense-up) Supported
- Audio Microphone Available (Option)
- AHD3.0, TVI, CVI or CVBS Video Out can be selectable
- UTC Supported
- Running Voltage : DC12V
- CMOS Video Module (32x32mm 1-board)



### Dimension

### Specification



### Option

- Audio: ACC-2N0A

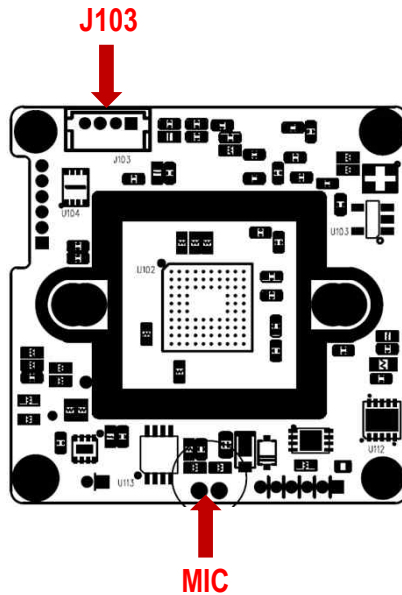
Model	ACC-2N0
Signal System	AHD 3.0
Pickup Device	1/2.8"(D-6.52mm) 5.11M Sony CMOS Sensor
Scanning System	Progressive Scan (4:3 or 16:9)
Sync. System	Internal
Total Pixels	5.69MP [2,704(H)x2,104(V)]
Active Pixels	5.11MP [2,616(H)x1,960(V)]
Min. Illumination	0.01Lux(F2.5 - 30IRE), 0.005(ICR on), 0.0003Lux(DSS on)
Mechanical ICR	Available (Option)
Video Out	AHD3.0: 2592x1944p(4:3)@Max.20 2560x1440p, 1920x1080, 1280x720(16:9)@25/30
Lens	Option
Lens (Mount)	Fixed IRIS Lens
OSD	Built-in OSD Switch, AD Key, UTC
Camera Title	Off, On(Max. 8 Characters)
Language	English, Chinese(Simplified), Chinese(Traditional), Japanese, Korean
Exposure	Auto (ELC)
White Balance	AUTO, AUTOext, Preset, Manual
BLC	Off, HLC, BLC, WDR
Day & Night Mode	AUTO, COLOR, B/W, EXT
Gain Control	AGC (0~10)
Electronic Shutter	Auto, Manual, Flickerless
DSS(Sense-up)	X32
Noise Reduction	3DNR (Off, Low, Middle, High)
Mirror	Off, On(Mirror, Flip, Rotation)
Other Features	Motion Detection (4 Zones), Privacy Mask (16 Zones), ACE, D-Zoom, Defog, Gamma, Shading etc.
Communication	N/A
Microphone	Option (ACC-2N0A)
Power Source	DC 12V
Power Consumption	Less than 1.6 Watts (130mA@DC12V)
Operating Temp.	-10℃ ~ 55℃ (Humidity :0%RH ~ 90%RH)
Size (mm)	32x32 1-board
Weight	4.5 g

# ACC-2N0

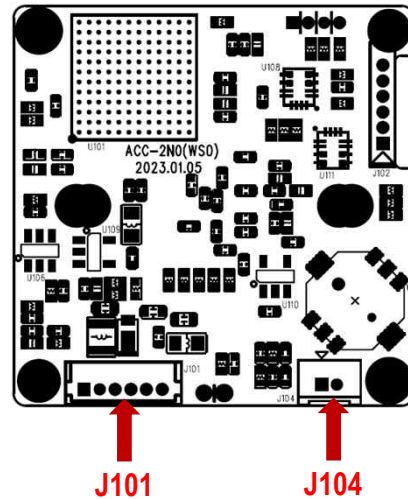
## CMOS VIDEO MODULE

### Pin Connections

Board Front



Board Rear

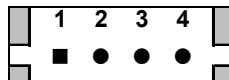


### MIC - Audio



No.	Pin Item	No.	Pin Item
1	MIC IN	2	GND

### J103 - LED

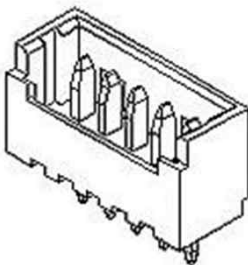


No.	Pin Item	No.	Pin Item
1	LED VCC(DC12V) OUT	3	EXT_DN IN (Night: High)
2	GND	4	LED_CTL OUT

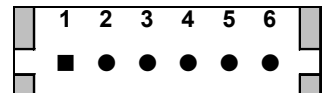
Wafer DIP type: 1.25mm pitch – 4 pin

Manufacturer: **Molex**

MFG Part Number: **53047-0410**



### J101

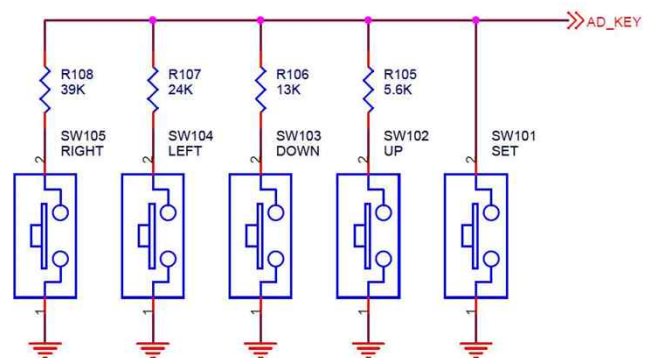


No.	Pin Item	No.	Pin Item
1	AUDIO OUT	4	VCC (DC12V)
2	VIDEO	5	GND
3	GND	6	AD KEY IN

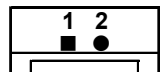
Wafer DIP Type: 1.25mm pitch – 6 pin

Manufacturer: **Molex**

MFG Part Number: **53047-0610**



### J104 - TDN ICR



No.	Pin Item	No.	Pin Item
1	ICR (+)	2	ICR (-)

Wafer DIP type: 1.25mm pitch – 2 pin

Manufacturer: **Yeonho**

MFG Part Number: **12512WS-02B**

SETUP MENU	SUB MENU 1	SUB MENU 2	SUB MENU 3	VALUE
EXPOSURE	BRIGHTNESS			0 ~ 20 <b>(12)</b>
	SHUTTER	AUTO		<b>NORMAL</b> / DEBLUR
		MANUAL		NTSC : <b>1/30</b> ,60,120,250,500,1K,2K,4K,8K,15K,30K PAL : <b>1/25</b> ,50,100,200,400,800,1.6K,3.2K,6.4K,12.8K,25.6K
		FLICKER		
	SENS-UP			<b>OFF</b> / X2/ X4/ X8 / X16 / X32
	AGC			0 ~ 10 <b>(8)</b>
BACKLIGHT	OFF			
	HLC	LEVEL		0 ~ 20 <b>(10)</b>
		COLOR		<b>BLK</b> / WHT/ YEL/ CYN/ GRN/ MAG/ RED/ BLU
	BLC	H-POS		0 ~ 20 <b>(8)</b>
		V-POS		0 ~ 20 <b>(10)</b>
		H-SIZE		0 ~ 20 <b>(10)</b>
		V-SIZE		0 ~ 20 <b>(10)</b>
	WDR	WEIGHT		LOW/ <b>MIDDLE</b> / HIGH
DAY&NIGHT	AUTO	D>N THRES		0(bright) ~ 20(dark) <b>(13)</b>
		N>D THRES		0(bright) ~ 20(dark) <b>(7)</b>
		DELAY		0 ~ 9sec/ 10sec/ 15sec <b>(0 Sec)</b>
		BURST		OFF/ <b>ON</b>
	COLOR			
	B&W	BURST		OFF/ <b>ON</b>
	EXT.D&N	SMART IR		OFF/ON
		SAT. LEVEL		0 ~ 20
		EXTERN SW		HIGH/LOW
		DELAY		0 ~ 9sec, 10sec, 15sec
		BURST		OFF/ON
WHITE BAL	AWB	AUTO		
		AUTOext		
		PRESET		Press ENTER key
		MANUAL	C-TEMP.	3000K/ <b>5000K</b> / 8000K
			R-GAIN	0 ~ 20 <b>(10)</b>
			B-GAIN	0 ~ 20 <b>(10)</b>
	COLOR GAIN			0 ~ 20 <b>(10)</b>
DNR				OFF/ LOW/ <b>MIDDLE</b> / HIGH
IMAGE	SHARPNESS			0 ~ 10 <b>(8)</b>
	GAMMA			0.45/ <b>0.55</b> / 0.65/ 0.75
	MIRROR			<b>OFF</b> / ON
	FLIP			<b>OFF</b> / ON
	D-ZOOM			1.0X~16.0X <b>(1.0X)</b>
	ACE			<b>OFF</b> / LOW/ MIDDLE/ HIGH
	DEFOG	OFF		
		ON	MODE	<b>AUTO</b> / MANUAL
			LEVEL	LOW/ <b>MIDDLE</b> / HIGH
	SHADING	OFF		
		ON	WEIGHT	0~100% <b>(100%)</b>

SETUP MENU	SUB MENU 1	SUB MENU 2	SUB MENU 3	VALUE
IMAGE	PRIVACY	BOX	OFF/ON	
			ZONE NUM	0 ~ 15
			ZONE DISP	OFF/ ON
			H-POS	0 ~ 60
			V-POS	0 ~ 34
			H-SIZE	0 ~ 60
			V-SIZE	0 ~ 34
			Y LEVEL	0 ~ 20
			CB LEVEL	0 ~ 20
			CR LEVEL	0 ~ 20
			TRANS	0 ~ 3
		POLYGON	OFF/ON	
			ZONE NUM	0 ~ 7
			ZONE DISP	OFF/ ON
			POS0-X~POS3-X	0 ~ 120
			POS0-Y~POS3-Y	0 ~ 68
			Y LEVEL	0 ~ 20
			CB LEVEL	0 ~ 20
			CR LEVEL	0 ~ 20
			TRANS	0 ~ 3
MOTION	OFF			
	ON	DET WINDOW	WINDOW USE	0 ~ 3
			WINDOW ZONE	OFF/ ON
			DET H-POS	0 ~ 60
			DET V-POS	0 ~ 34
			DET H-SIZE	0 ~ 60
			DET V-SIZE	0 ~ 34
		SENSITIVITY		0 ~ 10 (5)
		MOTION OSD		OFF/ ON
		TEXT ALARM		OFF/ ON
SYSTEM	COMM	CAM ID		0 ~ 255 (1)
		BAUDRATE		2400/ 4800/ 9600/ 19200/ 38400/ 57600/ 115200
		CAM ID DISPLAY		OFF/ ON
	OUTPUT	FRAME RATE	CVBS	720p30(25), 1080p30(25), 1440p30(25), 1944p12.5, 1944p20
			HD_T	720p30(25), 1080p30(25), 1440p30(25), 1944p12.5, 1944p20
			HD_C	720p30(25), 1080p30(25), 1440p30(25)
			HD_A	720p30(25), 1080p30(25), 1440p15, 1440p30(25), 1944p12.5, 1944p20
		FREQ(NT/PAL)		50Hz(PAL) / 60Hz(NTSC)
		ANALOG MODE		OFF / CVBS / HD_T / HD_C / HD_A
		CVBS OUT MODE		CUT / FULL
	LANGUAGE			ENGLISH/ CHINESE(Traditional)/ CHINESE(Simplified)/ JAPANESE/ KOREAN
	CAM TITLE	OFF		
		RIGHT UP		0 ~ 9, A ~ Z, blank
		LEFT DOWN		0 ~ 9, A ~ Z, blank
FACTORY DEFAULT				Reset to factory setting
EXIT				Exit SETUP menu