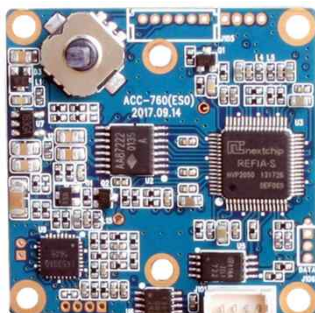
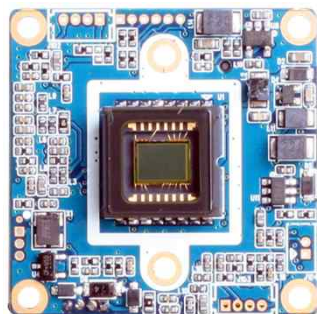


ACC-760

CCD VIDEO MODULE

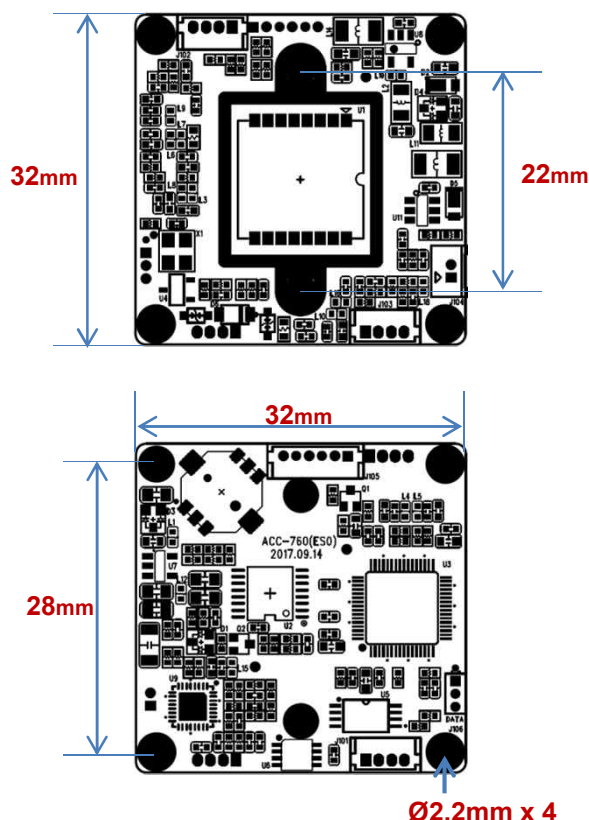


Main Features

- 1/3" Sharp 5μm x 7.4 μm Pixel Interlaced Color CCD Sensor
- 520K Pixels (700 TV Lines)
- Mountable Lens: Fixed, Pinhole, Manual VF, DC Auto Vari-focal, ICR Vari-focal Lens
- ICR Mechanism Available
- 2D-DNR Supported
- Built-in OSD Switch (Both AD and GPIO type Supported)
- UTC Supported
- CCD Video Module (32x32mm 1-board)



Dimension



Option

- Lens

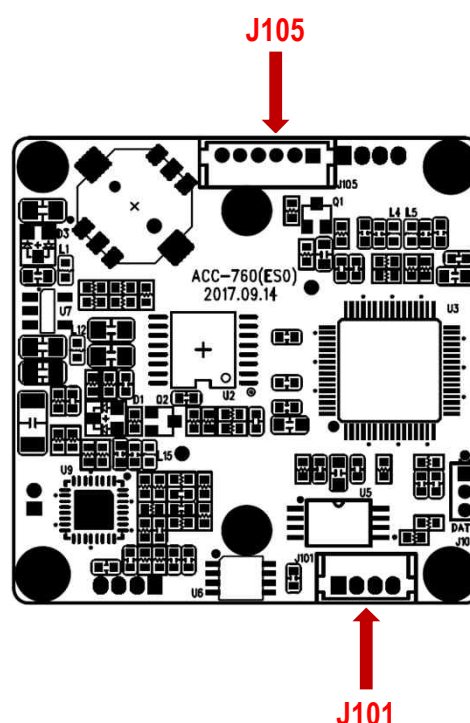
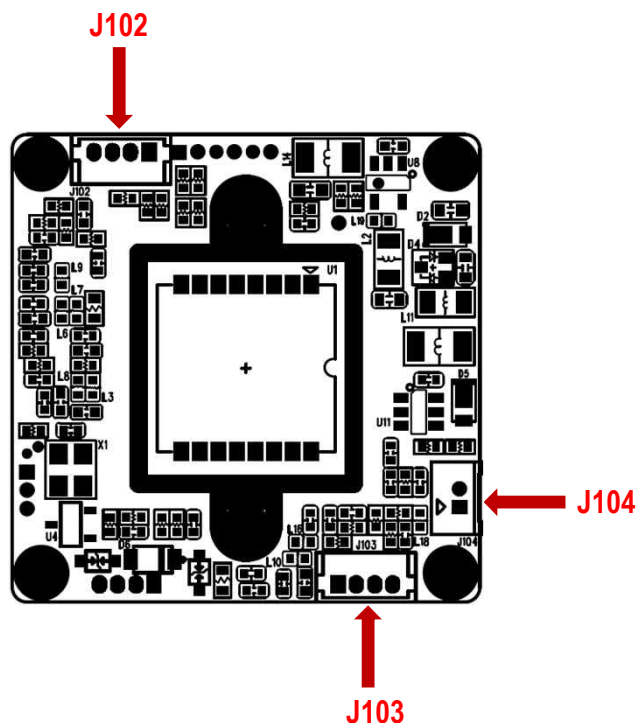
Specifications

Model	ACC-760N	ACC-760P
Signal System	NTSC	PAL
Pickup Device	1/3"(D-6mm) 960H Sharp CCD	
Scanning System	2:1 Interlace	
Sync. System	Internal	
Total Pixels	520K [1020(H)x508(V)]	610K [1020(H)x596(V)]
Effective Pixels	480K [976(H)x494(V)]	570K [976(H)x582(V)]
Scanning Frequency	59.94Hz(VD)	50Hz(VD)
Min. Illumination	0.2Lux(F2.5 – 30IRE), 0.1Lux(ICR on)	
H-Resolution	700TV Lines(H)	
S/N Ratio	More than 50dB (AGC off)	
Lens	Option	
Lens (Mount)	Fixed & DC IRIS Lens Board, Pinhole, VF type – M12 & Ø14	
OSD	Via 5-directional On-board Tact-switch, UTC	
Camera Title	Off, On(Max. 15 Characters)	
Language	English, Japanese, Chinese(Traditional), Russian, French, Spanish, Portuguese, German	
Exposure	AE, Manual	
White Balance	ATW1, ATW2, ATW-SET, ANTI. CRL, Manual	
BLC	Off, BLC, HLC	
Day & Night Mode	AUTO, COLOR, B/W, EXT	
Gain Control	Off, On(Low, Middle, High)	
Electronic Shutter	1/60~1/100,000sec	1/50~1/100,000sec
Noise Reduction	Off, On(2D-DNR)	
Mirror	Off, On(MIRROR)	
Other Features	MOTION (4 Zones), PRIVACY (8 Zones), Parking Line, Lens Shading, Etc.	
Signal Output	1.0 Vp-p Composite (75Ω)	
Power Source	DC12V	
Power Consumption	Less than 1Watts (80mA@DC12V)	
Operating Temp.	-10℃ ~ 55℃ (Humidity :0%RH ~ 90%RH)	
Size (mm)	32x32 1-board	
Weight	5 g (without OLPF)	

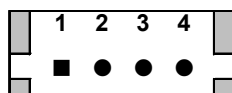
ACC-760

CCD VIDEO MODULE

Pin Connections



J102 – IR LED Board



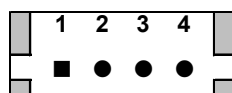
No.	Pin Item	No.	Pin Item
1	DC12V	3	EXT_DN (CDS)
2	GND	4	D&N OUT

Wafer DIP type: **1.25mm pitch – 4 pin**

Manufacturer: **Molex**

MFG Part Number: **53047-0410**

J103 – DC IRIS



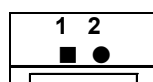
No.	Pin Item	No.	Pin Item
1	DMP+	3	DRV+
2	DMP-	4	GND

Wafer DIP type: **1.25mm pitch – 4 pin**

Manufacturer: **Molex**

MFG Part Number: **53047-0410**

J104 – TDN ICR



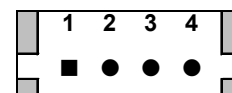
No.	Pin Item	No.	Pin Item
1	ICR (+)	2	ICR (-)

Wafer DIP type: **1.25mm pitch – 2 pin**

Manufacturer: **Yeonho**

MFG Part Number: **12512WS-02B**

J101 – Input/Output



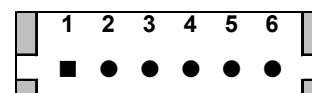
No.	Pin Item	No.	Pin Item
1	VIDEO	3	DC12V
2	GND	4	GND

Wafer DIP type: **1.25mm pitch – 4 pin**

Manufacturer: **Molex**

MFG Part Number: **53047-0410**

J105 – OSD



No.	Pin Item	No.	Pin Item
1	GND	4	KEY SET (AD)
2	KEY DOWN	5	KEY RIGHT
3	KEY UP	6	KEY LEFT

Wafer DIP type: **1.25mm pitch – 4 pin / 6 pin**

Manufacturer: **Molex**

MFG Part Number: **53047-0410 / 0610**

SETUP MENU	SUB MENU1	SUB MENU2	SUB MENU3	SUB MENU4	VALUE
LENS	DC	BRIGHTNESS			0 ~ 255
		IRIS SPEED			0 ~ 15
		RETURN			
	MANUAL	BRIGHTNESS			0 ~ 255
		RETURN			
EXPOSURE	SHUTTER				AUTO, 1/50(60), FLK, 1/200(250), 1/400(500), 1/1000, 1/2000, 1/4000, 1/5000, 1/10000, 1/100000
	AGC				OFF, LOW, MIDDLE, HIGH
	D-WDR	OFF			
		ON	LEVEL		0 ~ 63
			RETURN		
	RETURN	RETURN			
WHITE BALANCE	ATW 1				
	ATW 2				
	AWC -> SET				
	ANTI. CRL				
	MANUAL	COLOR TEMP			MANUAL, INDOOR, OUTDOOR
			BLUE	0 ~ 255	
			RED	0 ~ 255	
BACKLIGHT	OFF				
	BLC	AREA SEL.			AREA 1 / 2
		AREA STATE			ON, OFF
		GAIN			0 ~ 255
		HEIGHT			0 ~ 15
		WIDTH			0 ~ 15
		LEFT / RIGHT			0 ~ 15
		TOP / BOTTOM			0 ~ 15
		RETURN			
	HLC	LEVEL			0 ~ 255
		MODE			ALL DAY
		MASK SKIP			ON, OFF
		RETURN			
DAY & NIGHT	AUTO	D->N LEVEL			128~240
		D->N DELAY			1,3,5,10,15,20,25,30
		N->D LEVEL			0~112
		N->D DELAY			1,3,5,10,15,20,25,30
	COLOR				
	B/W	BURTST			ON, OFF
		IR SMART	OFF		
			ON	IR GAIN	0 ~ 255
				HEIGHT	0 ~ 15
				WIDTH	0 ~ 15
				LEFT / RIGHT	0 ~ 15
				TOP / BOTTOM	0 ~ 15
				RETURN	
		IR LEVEL			LOW, HIGH
		RETURN			
	EXT	D->N (DELAY)			1, 3, 5, 10, 15, 20, 25, 30 Sec
		N->D (DELAY)			1, 3, 5, 10, 15, 20, 25, 30 Sec
		RETURN			
DPC	START				
	DPC VIEW				ON, OFF
	LS VALUE				0 ~ 63
	DIFF.				0 ~ 63
	AREA HS				1 ~ 255
	AREA HE				1 ~ 255
	AREA VS				1 ~ 255
	AREA VE				1 ~ 255
	RETURN				

SETUP MENU	SUB MENU1	SUB MENU2	SUB MENU3	SUB MENU4	VALUE
SPECIAL	CAM TITLE				ON, OFF (<i>Max. 15 Characters</i>)
	MOTION	OFF			
		ON	AREA SEL.		AREA 1 / 2 / 3 / 4
			AREA STATE		ON, OFF
			HEIGHT		0 ~ 15
			WIDTH		0 ~ 15
			LEFT / RIGHT		0 ~ 15
			TOP / BOTTOM		0 ~ 15
			DEGREE		0 ~ 255
			VIEW		ON, OFF
			RETURN		
	PRIVACY	OFF			
		ON	AREA SEL.		AREA 1 / 2 / 3 / 4 / 5 / 6 / 7 / 8
			AREA STATE		ON, OFF
			HEIGHT		0 ~ 15
			WIDTH		0 ~ 15
			LEFT / RIGHT		0 ~ 15
			TOP / BOTTOM		0 ~ 15
			COLOR		0 ~ 15
			RETURN		
	PARK. LINE	OFF			
		ON	LT		0 ~ 255
			LB		0 ~ 255
			RT		0 ~ 255
			RB		0 ~ 255
			F		0 ~ 255
			N		0 ~ 255
			T		0 ~ 255
			V1		0 ~ 255
			V2		0 ~ 255
			V3		0 ~ 255
			RETURN		
	IMAGE ADJ.	LENS SHAD.	OFF		
			ON	LEVEL	0 ~ 255
				H-CENTER	0 ~ 255
				V-CENTER	0 ~ 255
			RETURN		
		2DNR	OFF		
			ON	LEVEL	0 ~ 15
			RETURN		
		MIRROR			ON, OFF
		FONT COLOR	FONT		0 ~ 15
			ID & TITLE		0 ~ 15
			RETURN		
		CONTRAST			0 ~ 255
		SHARPNESS			0 ~ 31
		DISPLAY	CRT	PED LEVEL	0 ~ 63
				COLOR GAIN	0 ~ 255
				RETURN	
			LCD	GAMMA	0.3, 0.35, 0.4, 0.45, 0.5, 0.55, 0.6, 0.65, 0.7, 0.75, 0.8 0.85, 0.9, 0.95, 1.00
				PED LEVEL	0 ~ 63
				COLOR GAIN	0 ~ 255
				RETURN	
			USER	GAMMA	0.3, 0.35, 0.4, 0.45, 0.5, 0.55, 0.6, 0.65, 0.7, 0.75, 0.8 0.85, 0.9, 0.95, 1.00
				PED LEVEL	0 ~ 63
				COLOR GAIN	0 ~ 255
				RETURN	
		NEG. IMAGE			ON, OFF
		RETURN			
	COMM. ADJ.				<i>N/A for this model</i>
	LANGUAGE				ENG, CHN(Traditional), GER, FRA, SPA, RUS, POR, JPN
	VERSION				
	RETURN				
RESET	FACTORY				RESET
	RETURN				
EXIT	SAVE				Exit SETUP menu without saving
	RESET				Reset to factory setting
	NOT SAVE				Exit SETUP menu after saving