

DCC-770

CMOS VIDEO MODULE



Main Features

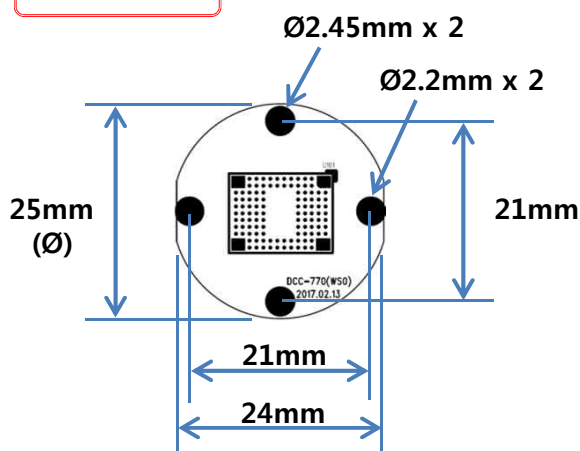
- 1/2.8" Sony 2.9µm Pixel Progressive Starvis Color CMOS Sensor
- 2Mega Pixels – Maximum 1080p(1920x1080p)
- Mountable Lens: Fixed, Pinhole, Manual VF Lens
- WDR / 3D-NR / DSS(Sens-up) Supported
- OSD Available via UART (Pelco-D and Parantek Protocol)
- HD-SDI Video Out Supporting standard SMPTE protocol
- EX-SDI & Analog Composite Video Out Supported
- CMOS Video Module (25Ø 3-boards)



Specifications

Model	DCC-770
Signal System	HD-SDI (Serial Data Interface) or EX-SDI
Pickup Device	1/2.8"(D-6.46mm) 2.13M Sony Color CMOS Sensor
Scanning System	Progressive Scan (16:9)
Sync. System	Internal
Total Pixels	2.15M [1945(H)x1109(V)]
Effective Pixels	2.13M [1945(H)x1097(V)]
Min. Illumination	0.04Lux(F2.5 – 30IRE), 0.001Lux (DSS on)
Mechanical ICR	N/A
S/N Ratio	More than 50dB (AGC off)
Video Out 1	HD-SDI or EX-SDI: 1080p@25/30/50/60, 720p@25/30/50/60
Video Out 2	Composite Video 1V p.p (NTSC/PAL - 75Ω)
Lens	Manual Iris Lens
Lens (Mount)	Board/Pinhole Mount(M12) - Lens Holder
OSD	Via UART
Camera Title	Off, On(Max. 8 Characters)
Language	English, Chinese(Simplified), Chinese(Traditional), Japanese, Korean
Exposure	Auto (ELC)
White Balance	AWB, ATW, Push Lock, Manual
BLC	Off, HLC, BLC, WDR * WDR is not operated when manual shutter mode or CVBS output mode is selected.
Day & Night Mode	AUTO, COLOR, B/W
Gain Control	AGC (0~10)
Electronic Shutter	1/25(30)~1/30,000sec
Noise Reduction	3DNR (Off, Low, Middle, High)
DSS(Sens-up)	X32
Mirror	Off, On(Mirror, Flip)
Other Features	Motion Detection (4 Zones), Privacy Mask (16 Zones), Flickerless, Lens Shading, Gamma, D-zoom, Defog etc.
Communication	Pelco-D and Parantek Serial Protocol Supported RS-232C (Default: 9600bps)
Power Source	DC9V ~ 15V
Power Consumption	Less than 2.2Watts (180mA@DC12V)
Operating Temp.	-10℃ ~ 55℃ (Humidity :0%RH ~ 90%RH)
Size (mm)	25(Ø) – 3 boards
Weight	18.5 g (Including M12 Lens holder)

Dimension



with M12 Lens Mount

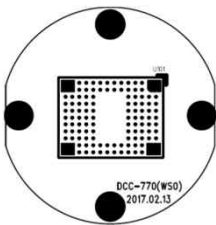
Option

- Lens Mount (M12)
- OLPF (IR-cut, IR-pass, Band-pass)
- SDI Cable

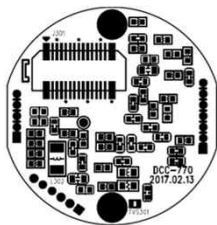
DCC-770

CMOS VIDEO MODULE

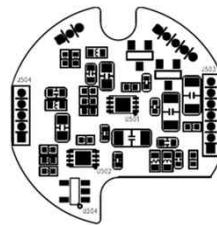
Pin Connections



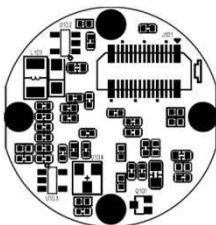
1st Sensor Board – Front



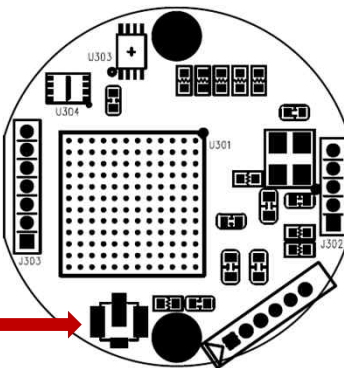
2nd ISP Board – Front



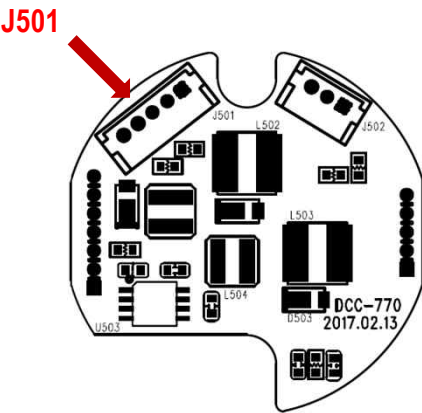
3rd Power Board – Front



1st Sensor Board – Rear



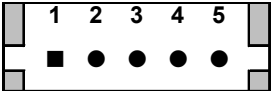
2nd ISP Board – Rear



3rd Power Board – Rear

J304 – HD-SDI Out - MHF

J501 – Power & Etc.



No.	Pin Item	No.	Pin Item
1	CVBS	4	232C RX
2	GND	5	232C TX
3	DC 12V		

Wafer DIP type: 1.25mm pitch – 5 pin
 Manufacturer: **Molex**
 MFG Part Number: **53047-0510**

J502 – Not in use

6. OSD MENU

SETUP MENU	SUB MENU 1	SUB MENU 2	SUB MENU 3	VALUE
LENS	DC			INDOOR/OUTDOOR/DEBLUR
	MANUAL			NORMAL/DEBLUR
ZOOM/FOCUS	FOCUS MODE			AUTO/MANUAL
	ONE PUSH AF			Press ENTER Key
	LENS RESET			Press ENTER Key
	ICR SYNC AF			OFF / ON
EXPOSURE	BRIGHTNESS			0 ~ 20
	AGC			0 ~ 10
	SHUTTER	AUTO		
		MANUAL		1/30(25),60(50),120(100),250,700,1K,1.6K,2.5K,5K,7K,10K,30K
		FLICKER		
	SENS-UP			OFF/ X2/ X4/ X8 / X16 / X32
BACKLIGHT	OFF			
	HLC	LEVEL		0 ~ 20
		COLOR		BLK,WHT,YEL,CYN,GRN,MAG,RED,BLU
	BLC	H-POS		0 ~ 20
		V-POS		0 ~ 20
		H-SIZE		0 ~ 20
		V-SIZE		0 ~ 20
	WDR	WEIGHT		LOW/ MIDDLE/ HIGH
DAY&NIGHT	AUTO	SMART IR		OFF / ON
		ANTI-SAT.		0 ~ 20
		AGC THRES		0(bright) ~ 20(dark)
		AGC MARGIN		0(bright) ~ 20(dark)
		DELAY		1 SEC, 3 SEC, 5 SEC, 10 SEC, 15 SEC
	COLOR			
	B&W	SMART IR		OFF / ON
		ANTI-SAT.		0 ~ 20
	EXTERN	SMART IR		OFF / ON
		ANTI-SAT.		0 ~ 20
		EXTERN SW		HIGH / LOW
		DELAY		1 SEC, 3 SEC, 5 SEC, 10 SEC, 15 SEC
WHITE BALANCE	AWB	AUTO		
	AUTO EXT			
	PUSH LOCK			Press ENTER key
	MANUAL	COLOR TEMP		3000K/ 5000K/ 8000K
		R-GAIN		0 ~ 20
		B-GAIN		0 ~ 20
	COLOR GAIN			0 ~ 20
IMAGE	SHARPNESS			0 ~ 10
	IMAGE RANGE	FULL		0 ~ 20
		COMP		
		USER	OFFSET	0 ~ 32
	DNR			OFF / LOW / MIDDLE / HIGH
	GAMMA			0.45/ 0.55/ 0.65/ 0.75
	MIRROR			OFF/ ON
	FLIP			OFF/ ON
	D-ZOOM			1 ~ 16X
	ACE			OFF / LOW / MIDDLE / HIGH
	DEFOG	OFF		
		ON	AUTO / MANUAL	
			LEVEL	LOW/ MIDDLE/ HIGH
	SHADING	OFF		
		ON		WEIGHT 0 ~ 100%

SETUP MENU	SUB MENU 1	SUB MENU 2	SUB MENU 3	VALUE
DIS	OFF			
	ON	RANGE		10%, 20%, 30%
		FILTER		LOW / MIDDLE / HIGH
		AUTO C		OFF / HALF / FULL
SPECIAL	PRIVACY	BOX	OFF	
			ZONE NUM	0 ~ 15
			ZONE DISP	OFF/ ON
			H-POS	0 ~ 60
			V-POS	0 ~ 34
			H-SIZE	0 ~ 60
			V-SIZE	0 ~ 34
			COLOR	YEL / CYN / GRN / MAG / RED / BLU / BLK / WHT
			TRANS	0 ~ 3
		POLYGON	OFF	
			ZONE NUM	0 ~ 7
			ZONE DISP	OFF/ ON
			POS0-X ~ POS3-X	0 ~ 120
			POS0-Y ~ POS3-Y	0 ~ 68
			Y LEVEL	0 ~ 20
			CB LEVEL	0 ~ 20
			CR LEVEL	0 ~ 20
			TRANS	0 ~ 3
	MOTION	OFF		
		DET WINDOW	WINDOW USE	0 ~ 3
			WINDOW ZONE	OFF/ ON
			DET H-POS	0 ~ 60
			DET V-POS	0 ~ 34
			DET H-SIZE	0 ~ 60
			DET V-SIZE	0 ~ 34
		SENSITIVITY		0 ~ 10
		ESTIMATE		OFF/ON
		QUICK ZOOM	ZOOM SPEED	LOW / MIDDLE / HIGH
			TRACKING	OFF / ON
			REPEAT	OFF / ON
		MOTION OSD		OFF/ ON
		TEXT ALARM		OFF / ON
		SIGNAL OUT		OFF / ON
	CAM TITLE			0 ~ 9, A ~ Z, blank
SYSTEM	COMMUNL	CAM ID		0 ~ 255
		BAUD RATE		2400, 4800, 9600, 19200, 38400, 57600, 115200
	FRAME RATE			1080_30p(25p), 1080_60p(50p), 720_30p(25p), 720_60p(50p)
	FREQ (NT/PAL)			60Hz(NTSC)/ 50Hz(PAL)
	SDI OUT			HD-SDI / EX-SDI
	CVBS OUT			OFF/ ON
	LANGUAGE			English / Japanese / Korean / Chinese(Traditional) / Chinese(Simplified)
	FACTORY DEFAULT			Reset to factory default setting
RETURN				Return to previous menu
EXIT				Exit SETUP menu