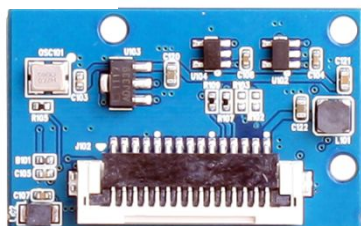
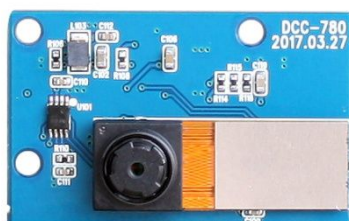


DCC-780

CMOS VIDEO MODULE

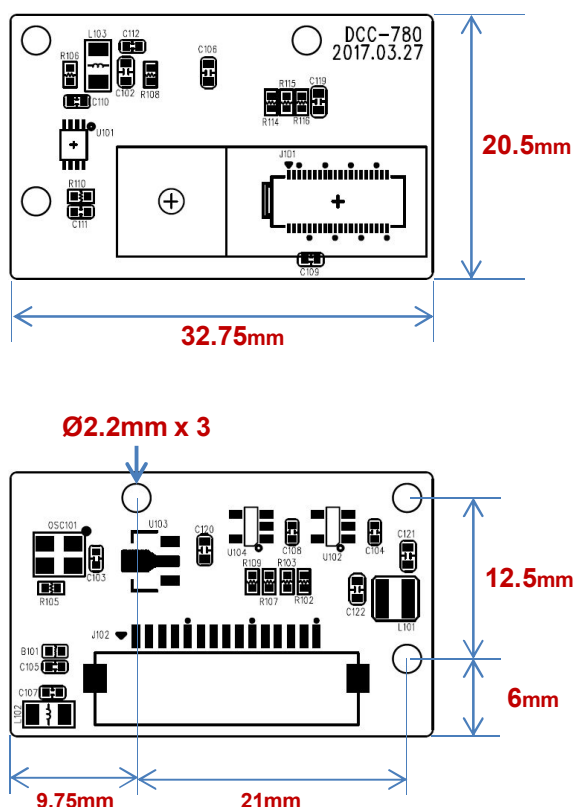


Main Features

- 1/4" OmniVision 1.4μm Pixel OV5640 Color CMOS Sensor
- 5.03M Pixels - Maximum QXGA(2592x1944p)
- Built-in Fixed Focus Flat Pinhole Lens: f=3.2mm
- Built-in IR-Cut(650nm) OLPF
- Required a ISP Controller
- 1mm Pitch 15pin FFC Connector
- MIPI Interface Video Module (32.75x20.50mm 1-board)



Dimension



Option

- FFC 15P Cable

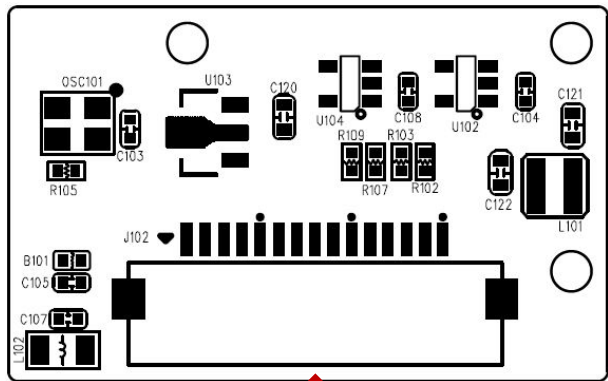
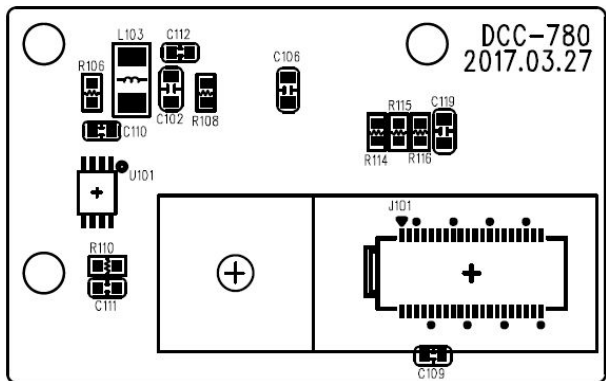
Specifications

Model	DCC-IP780
Signal System	MIPI
Pickup Device	1/4"(D-4.5mm) 5.03M OmniVision CMOS Sensor (Part Name: OV5640)
Scanning System	Progressive Scan
Sync. System	Internal
Total Pixels	5.15MP [2,624(H)x1,964(V)]
Active Pixels	5.03MP [2,592(H)x1,944(V)]
Min. Illumination	0.4Lux
S/N Ratio	Max. 36dB
Video Out	Raw RGB, YUV, or JPEG Compression (1mm pitch 15pin FFC Connector)
Supported Resolution & Speed	QXGA (2592x1944)~15fps, 1080p~30fps, 1280x960~45fps, 720p~60fps, VGA~90fps, QVGA~120fps
Lens	Flat Pinhole f=3.2mm board type, F2.8
Angle of View	73°(D), 58°(H), 32.5°(V)
Power Source	DC 3.3V
Power Consumption	Less than 0.4Watts (110mA)
Operating Temp.	-10℃ ~ 55℃ (Humidity :0%RH ~ 90%RH)
Size (mm)	32.75x20.50 1-board
Weight	3.5 g (without FFC Cable)

DCC-780

CMOS VIDEO MODULE

Pin Connections



J102 – MIPI & Etc.

1	GND	9	CAM1_CP
2	CAM1_DN0	10	GND
3	CAM1_DP0	11	CAM_RESET (IN)
4	GND	12	CAM_PWDN (IN)
5	CAM1_DN1	13	SCL0 (IN)
6	CAM1_DP1	14	SDA0 (IN/OUT)
7	GND	15	DC3.3V IN
8	CAM1_CN		

Wafer SMD type: **1mm pitch – 15 pin**
Manufacturer: **Yeonho**
MFG Part Number: **10031HR-H15**