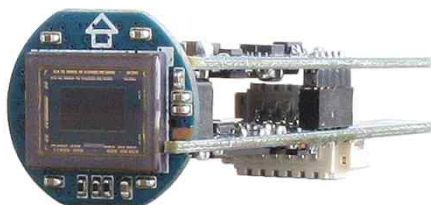


DCC-2J0

CMOS USB VIDEO MODULE

USB 2.0
CAMERA

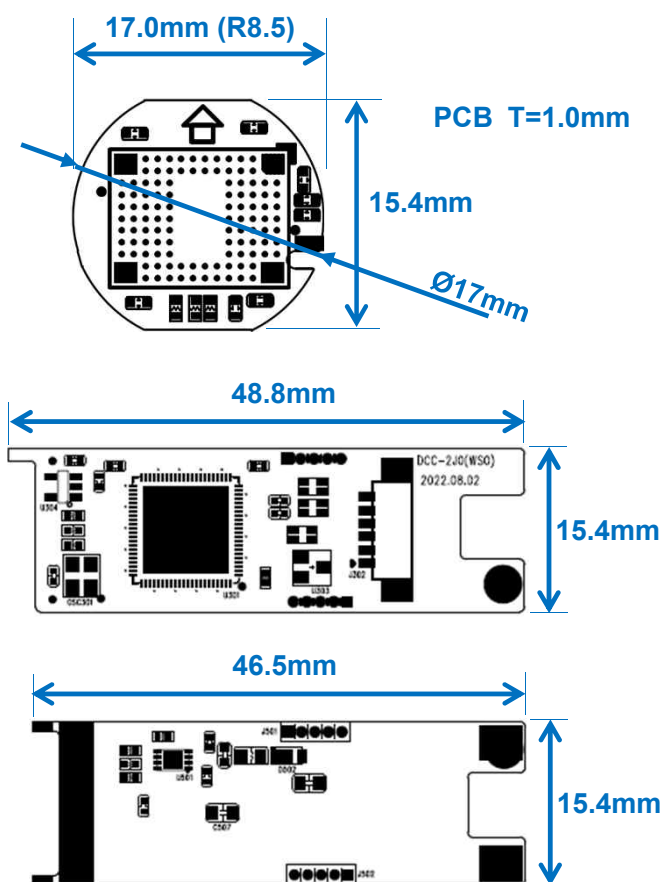


Main Features

- 1/2.8" 2.9μm Pixel Progressive Sony Starvis CMOS Sensor
- 2 Mega Pixels – Maximum 1080p (1920x1080)
- Fixed IRIS Lens Supported
- No Lens Mount Holder Available
- USB2.0 Compliant
- Best for ATM, Kiosk, POS, Face Recognition, Gaming Applications
- CMOS IP Video Module (17Ø & etc., 3-boards)



Dimension



Option

- OLPF
- USB Cable
- 70cm, 1.5m, 3m

Specification

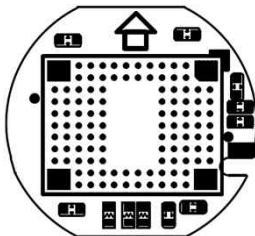
Model	DCC-2J0	DCC-2J30
Signal System	MJPEG Encoded (USB2.0)	
Pickup Device	1/2.8"(D-6.46mm) 2.12M Sony CMOS Sensor	
Scanning System	Progressive Scan (16:9)	
Sync. System	Internal	
Total Pixels	2.16MP [1,945(H)x1,109(V)]	
Active Pixels	2.12MP [1,937(H)x1,097(V)]	
Min. Illumination	0.1Lux	
Mechanical ICR	N/A	
Video Out	MJPEG: 1080/720p/VGA/CIF	
Capturing Speed	Max. 25/30fps (50/60Hz)	Max. 50/60fps (50/60Hz)
Lens	Fixed IRIS Lens	
Lens (Mount)	N/A	
OSD	N/A	
Exposure	Auto	
White Balance	Auto	
Day & Night Mode	Color (Factory Default)	
Gain Control	Auto	
Electronic Shutter	Auto	
Mirror	Off (Factory Default)	
Supported O/S	UVC Compatible O/S - Windows, Linux, Mac, Android etc.	
No. of Camera ID	N/A	
Power Source	DC5V via USB	
Power Consumption	Less than 0.9 Watts (180mA @DC5V)	
Operating Temp.	-10℃ ~ 55℃ (Humidity :0%RH ~ 90%RH)	
Size (mm)	17Ø and etc. 3-boards	
Weight	7 g (Without OLPF)	

DCC-2J0

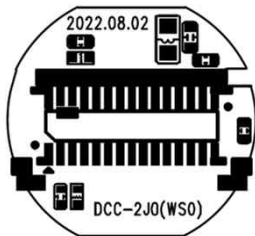
CMOS USB VIDEO MODULE

Pin Connections

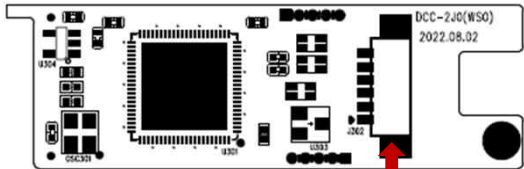
Sensor Board
Top



Sensor Board
Bottom

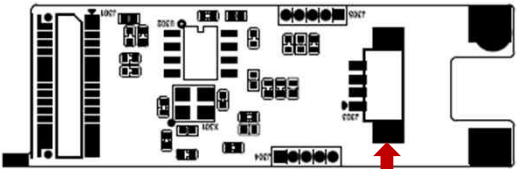


ISP Board
Top



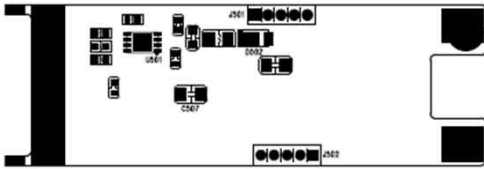
J302

ISP Board
Bottom

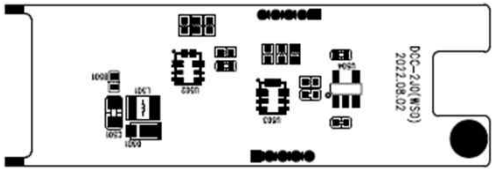


J303

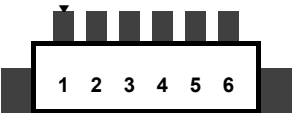
Power Board
Top



Power Board
Bottom



J302

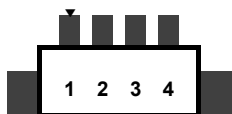


No.	Pin Item	No.	Pin Item
1	TXM	4	RXM
2	TXP	5	RXP
3	GND	6	GND

Wafer SMD type: 1.25mm pitch – 6 pin
 Manufacturer: Yeonho
 MFG Part Number: 12505WR-06

(Not in Use)

J303



No.	Pin Item	No.	Pin Item
1	USB 5V	3	DP
2	DM	4	GND

Wafer SMD type: 1.25mm pitch – 4 pin
 Manufacturer: Yeonho
 MFG Part Number: 12505WR-04

(DCC-2J0 / DCC-2J30 – USB2.0)