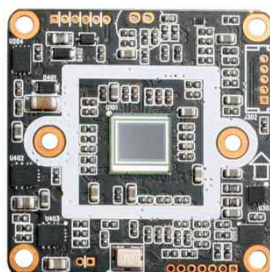


ACC-860

CMOS VIDEO MODULE

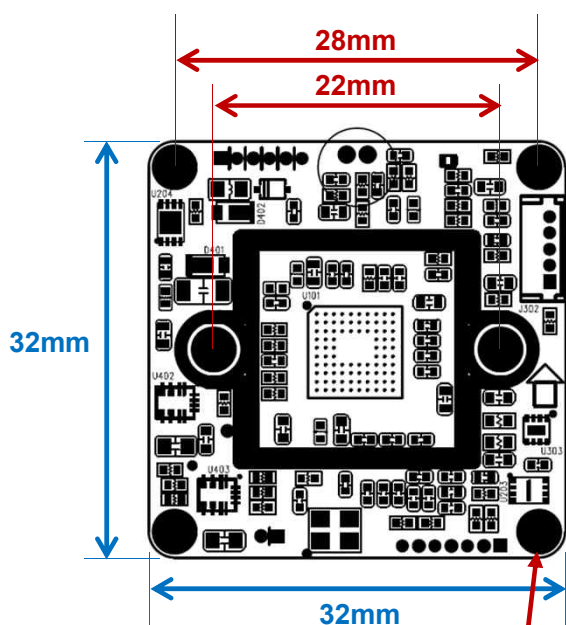


Main Features

- 1/2.8" Sony 2.0μm Pixel Progressive Starvis Color CMOS Sensor
- 5.11M Pixels (1944p)
- Mountable Lens: Fixed, Pinhole, Manual VF Lens
- ICR Mechanism Available
- 3D-DNR Supported
- Built-in OSD Switch (AD type Supported)
- UTC Supported
- AHD3.0 Camera
- CMOS AHD3.0 Video Module (32x32mm 1-board)



Dimension



Ø3.5(2.1mm hole x 4)
PCB Coordinate (14, 14) (14, -14)
(-14, 14) (-14, -14)

Option

- Mechanical ICR
- Audio
- Lens

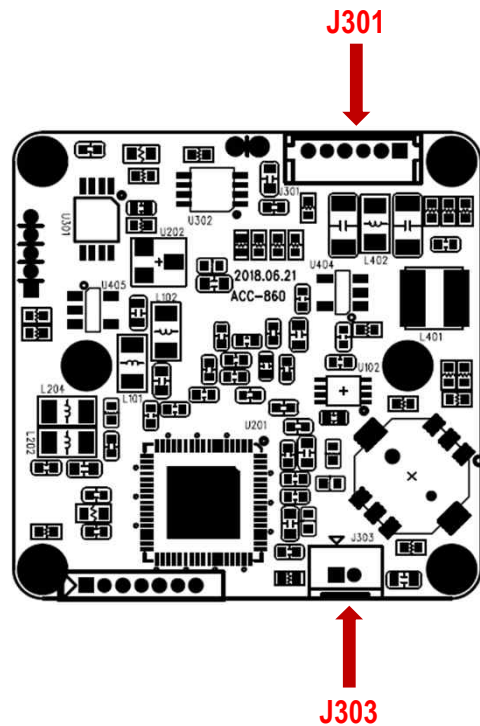
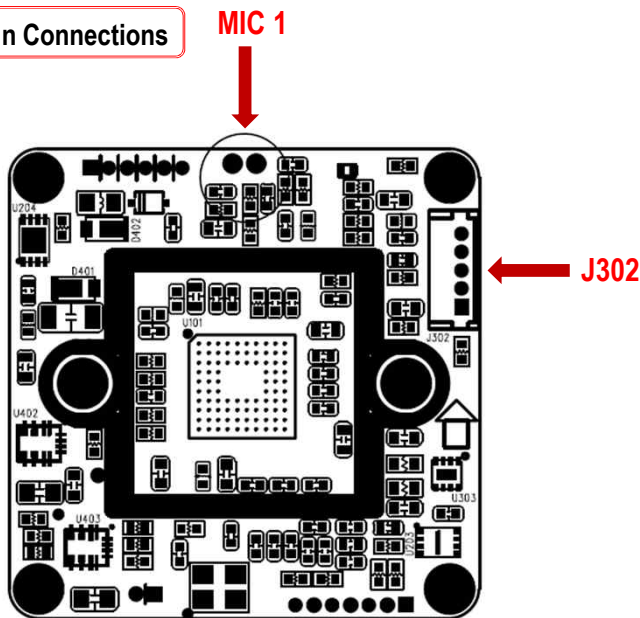
Specifications

Model	ACC-860
Signal System	AHD 3.0
Pickup Device	1/2.8"(D-6.52mm) 5.11M Sony CMOS Sensor
Scanning System	Progressive Scan (4:3 or 16:9)
Sync. System	Internal
Total Pixels	5.69MP [2,704(H)x2,104(V)]
Active Pixels	5.11MP [2,608(H)x1,960(V)]
Min. Illumination	1.5Lux(F2.5 - 30IRE), 0.7Lux(ICR on)
Mechanical ICR	Available (Option)
Video Out	AHD3.0: 2592x1944p(4:3)@20 AHD3.0: 2560x1440p(16:9)@25/30
Lens	Option
Lens (Mount)	Fixed IRIS Lens Board, Pinhole, VF type – M12
OSD	Via 5-direction Tact-switch or UTC
Camera Title	N/A
Language	English, Russian, French, Spanish, Portuguese, German Chinese(Simplified), Chinese(Traditional), Japanese, Italian, Polish, Dutch, Turkish
Exposure	Auto (ELC)
White Balance	ATW, AWC->SET
BLC	Off, BLC
Day & Night Mode	AUTO, COLOR, B/W, EXT
Gain Control	AGC (0~15)
Electronic Shutter	Auto, FLK
DSS(Sens-up)	N/A
Noise Reduction	2DNR, 3DNR (Off, Low, Middle, High)
Mirror	Off, On(Mirror, Flip, Rotation)
Other Features	Lens Shading Compensation etc.
Microphone	Available (Option: ACC-860A)
Power Source	DC 12V
Power Consumption	Less than 1.44 Watts (120mA@DC12V)
Operating Temp.	-10℃ ~ 55℃ (Humidity :0%RH ~ 90%RH)
Size (mm)	32x32 1-board
Weight	4.5 g (without OLPF)

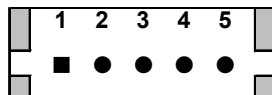
ACC-860

CMOS VIDEO MODULE

Pin Connections



J302 – IR LED Board



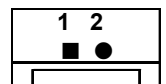
No.	Pin Item	No.	Pin Item
1	DC12V	4	DC 3.3V
2	GND	5	LED CTL (3.3V:B/W, 0V:Color)
3	EXT D&N (3.3V:B/W, 0V:Color)		

Wafer DIP type: **1.25mm pitch – 5 pin**

Manufacturer: **Molex**

MFG Part Number: **53047-0510**

J303 – TDN ICR



No.	Pin Item	No.	Pin Item
1	ICR (+)	2	ICR (-)

Wafer DIP type: **1.25mm pitch – 2 pin**

Manufacturer: **Yeonho**

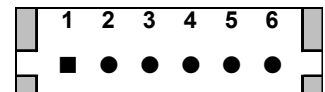
MFG Part Number: **12512WS-02B**

MIC 1 - Audio



No.	Pin Item	No.	Pin Item
1	MIC IN	2	GND

J301 – Input/Output



No.	Pin Item	No.	Pin Item
1	AUDIO OUT	4	DC12V
2	VIDEO	5	GND
3	GND	6	A/D KEY

Wafer DIP type: **1.25mm pitch – 4 pin / 6 pin**

Manufacturer: **Molex**

MFG Part Number: **53047-0410 / 0610**

SETUP MENU	SUB MENU1	SUB MENU2	SUB MENU3	SUB MENU4	VALUE
LENS	MANUAL				
EXPOSURE	SHUTTER				AUTO, FLK
	AGC				0 ~ 15
	BRIGHTNESS				1~100
	D-WDR				OFF, AUTO
	BLC	OFF			
		BLC	LEVEL		LOW, MIDDLE, HIGH
			AREA	POSITION	
			DEFAULT	SIZE	
WHITE BALANCE	ATW				
	AWC -> SET				
DAY & NIGHT	COLOR				
	B/W	IR SMART	OFF		
			ON	LEVEL	0~15
	EXT			AREA	
	AUTO	D->N (DELAY)			0~15 SEC
		N->D (DELAY)			0~15 SEC
		D->N (AGC)			1~255
		D->N (DELAY)			0~15 SEC
ADJUST	NR	2DNR			OFF, LOW, MIDDLE, HIGH
		3DNR			OFF, LOW, MIDDLE, HIGH
	SHARPNESS				LOW, MIDDLE, HIGH
	COLOR GAIN	BLUE GAIN			0~10
		RED GAIN			0~10
	LSC				OFF, ON
	MIRROR				OFF, MIRROR, V-FLIP, ROTATE
	DPC	LIVE DPC	AGC LEVEL		0~255
			LEVEL		0~100
		WHITE DPC	POS/SIZE		
			START		
			DPC VIEW		OFF, ON
			LEVEL		0~60
			AGC LEVEL		0~14
	LANGUAGE				ENG, CHN1, CHN2, GER, FRA, ITA, SPA, POL, RUS, POR, NED, TUR, JPN
	OUTPUT MODE	FORMAT			AHD, CHD, THD, CVBS
		RESOLUTION			4MEGA / 5MEGA
		FRAME RATE			RT(Real Time) / NRT(Non-Real Time)
		VIDEO OUT			NTSC / PAL
		APPLY SET			
EXIT	SAVE & END				
	RESET				
	NOT SAVE				