

# DIR-NF1M9(P)-2.8

## OUTDOOR IP CAMERA

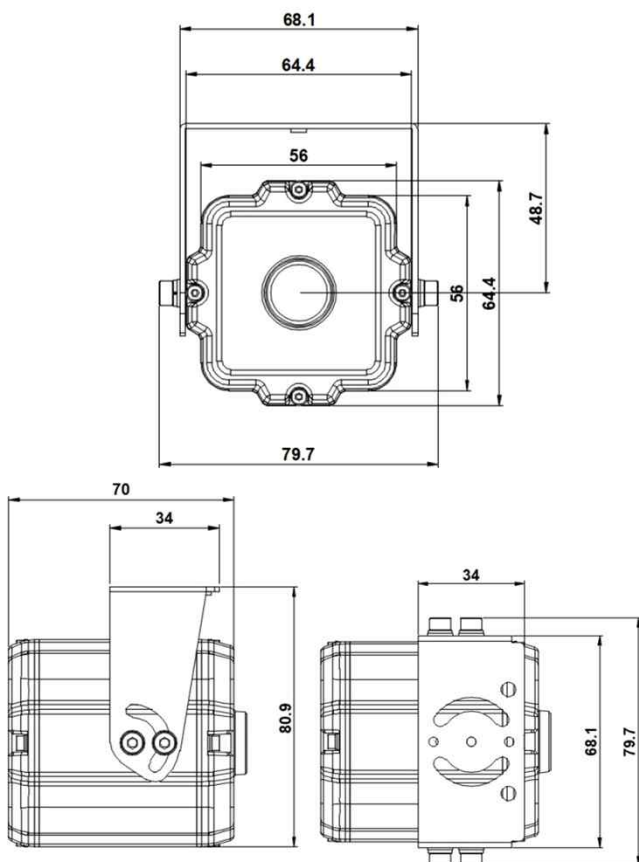


### Main Features

- 1/2.8" 2MP Sony Starvis CMOS Sensor
- 2 Mega Pixels (Max. 1080p25/30)
- f=2.8mm M/P Lens
- 24pcs of 940nm IR LEDs
- WDR, DSS(Sens-up), or 3DNR Supported
- Onvif Ver. 17.06 Compatible with H.264, and MJPEG
- PoE can be built-in
- Flexible Installation: U type swivel bracket can hold up the camera both up & down or left & right.
- Water-proof Housing (IP66)



### Dimension



### Option

- Lens (f=3.6, 4, 6, 8, 12, 16, 25mm)
- Different RJ45 Video Cable Length (Default: 60cm)
- M12 Connector Cable
- Sensor/Alarm port, Audio In/Out port, Micro SD

### Specifications

Model	DIR-NF1M9-2.8	DIR-NF1M9P-2.8
Signal System	IP (Network) – RTOS	
Pickup Device	<b>1/2.8"(D-6.46mm) 2.12M Sony CMOS Sensor</b>	
Scanning System	Progressive Scan (16:9 )	
Total Pixels	2.16MP [1,945(H)x1,109(V)]	
Active Pixels	2.12MP [1,937(H)x1,097(V)]	
Min. Illumination	0.1Lux, 0.003Lux (DSS on)	
No. of IRED	<b>24pcs (940nm IR LED)</b>	
Video Out (RJ45)	<b>Up to 30fps @ 1920x1080p</b> (1920x1080, 1280x720, 800x600, 704x480, 704x400, 640x480, 640x360, 320x240)	
Lens	<b>f=2.8mm, F2.5</b>	
Lens (Mount)	Board type (M12)	
Angle of View	<b>123.5°(D), 104°(H), 59°(V)</b>	
OSD	Via Webpage Viewer	
Camera Title	Off, On(Max. 8 Characters)	
Language	English	
White Balance	AUTO, AUTOext, Preset, Manual	
WDR	<b>Off, On(Low, Middle, High)</b> WDR can't work together with 3D-NR or DSS	
Day & Night Mode	Auto, Color, B&W	
Electronic Shutter	1/25(30)~1/30,000sec	
Noise Reduction	Off, On(Low, Middle, High) DNR can't work together with WDR or DSS	
DSS(Sens-up)	<b>X32</b> DSS can't work together with WDR or DNR	
Mirror	Off, On(Mirror, Flip)	
Other Features	Motion Detection(4 Zones), Privacy Mask(8 Zones), Defog, Gamma Etc.	
Network Protocol	TCP/IP, UDP/IP, RTP, RTSP, RTCP, NTP, HTTP DHCP, FTP, SMTP, DNS, DDNS Onvif 17.06 Compatible	
At-a-time Access	Maximum 3 users	
Video/Audio Codec	H.264, MJPEG (Duplex Streaming)	
Sensor In/Alarm Out	2/1 (Option)	
Audio Line In/Out	1/1 (Option)	
Power Source	<b>DC12V</b>	<b>POE only</b>
Power Consumption	Less than 4Watts (330mA)	
Operating Temp.	-10℃ ~ 55℃ (Humidity :0%RH ~ 90%RH)	
Size (mm)	64.4(W) x 64.4(H) x 70(D) (Without Bracket)	
Weight	400g (gift-box packing)	419g (gift-box packing)

# DIR-NF1M9(P)-2.8

## OUTDOOR IP CAMERA

### • IP camera connection

Connect LAN cable to RJ45 jack of camera

Connect the other end LAN cable to RJ45 jack of router or hub

If you are not using POE switcher to provide the power to the IP camera, connect regulated a DC12V power adaptor to the IP camera.

Wait for about 30 seconds until the camera initialization is completed

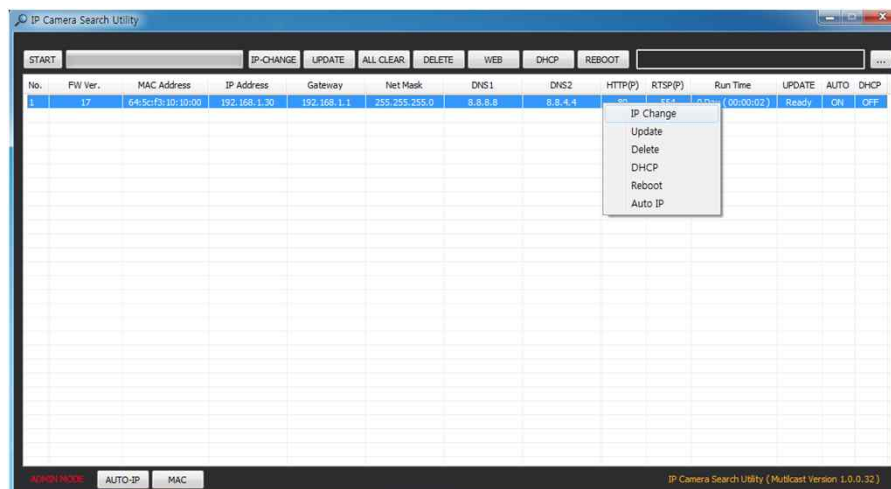
Factory Default IP address is **192.168.1.30**

Factory Default ID & Password are **admin / admin.**

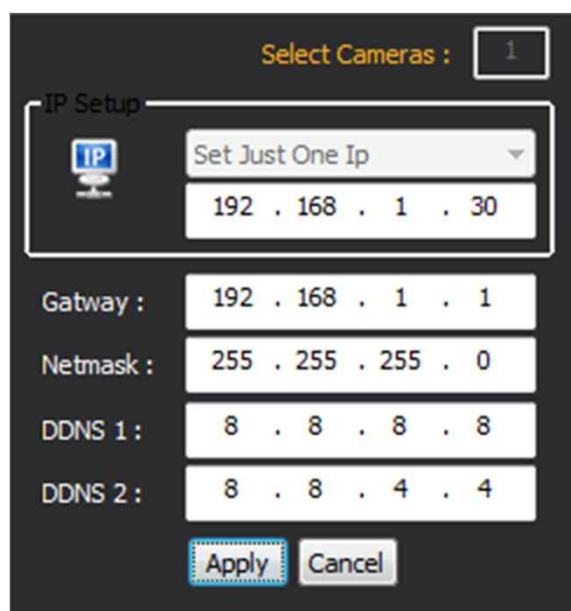
### • Using IP Search

You can simply change the IP address by using 'IP Search' provided.

Run IP Search as administrator. Click "START" button when the IP camera is connected to your PC or network, all IP address will appear.



Choose & change the IP address of camera you want to change and click "IP change"



After click the "IP Change" button left window will be appeared. Once you click "Apply" button, the camera will reboot for 10second.

After reboot the camera, the changed IP address will be applied and appeared.

### • Checking Video by Web Viewer

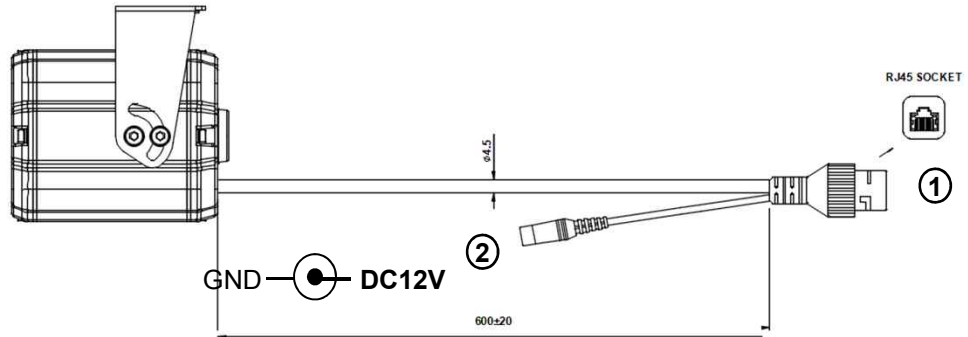
Run web browser and Input the IP address which taken from IP Search.

### • Supported O/S & Web Browser

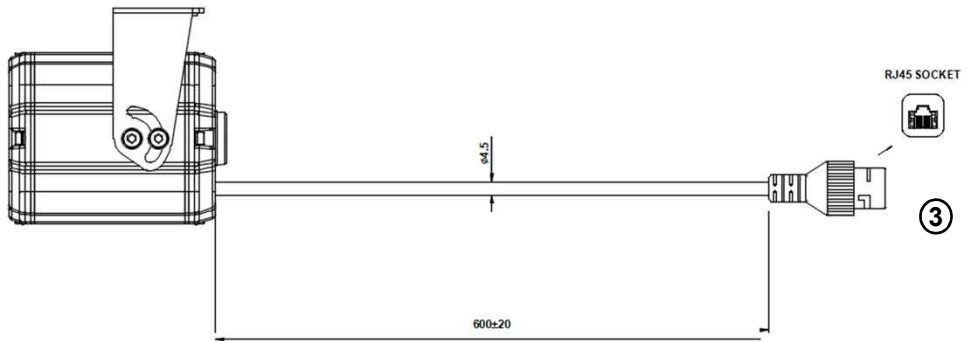
- O/S : Windows7, 8, 10, MAC
- Browser : Internet Explorer 11 or higher, Chrome , Firefox, Safari, Opera

# Cable Connection Interface

## DIR-NF1M9-2.8



## DIR-NF1M9P-2.8



	Function	I/O	Note	Remarks
①	VIDEO	OUT	H.264 video output	Non-POE
②	POWER	IN	Camera power input	DC12V
③	VIDEO/POE	IN/OUT	H.264 video output, Power over Ethernet (RJ45)	POE

## Water-proof RJ45 Connector/Cable Connection

