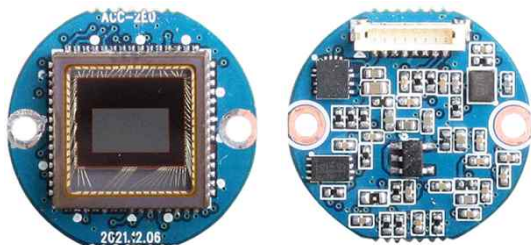


ACC-2E0

CMOS VIDEO MODULE

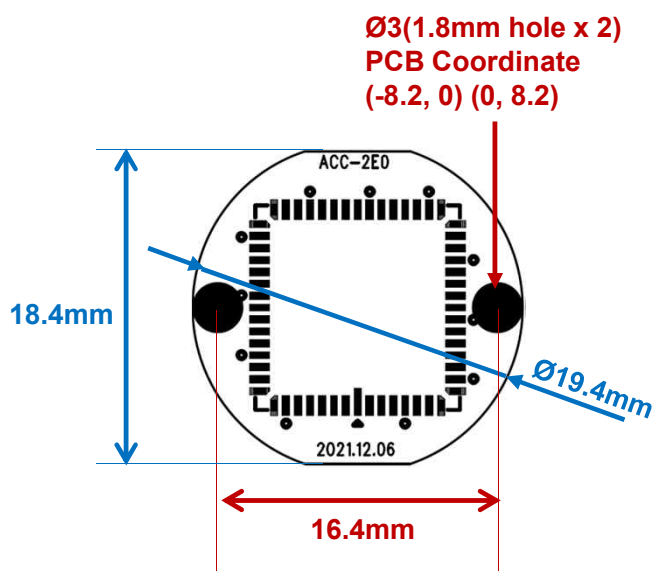


Main Features

- 1/2.7" 3μm Pixel Progressive Color CMOS Sensor
- 2.07M Pixels – Maximum 1080p (1920x1080p)
- Mountable Lens: Fixed IRIS Lens
- 2D-DNR Supported
- Operation Voltage : DC3.3V
- UTC Supported
- AHD2.0 Camera



Dimension



PCB T = 1.2mm

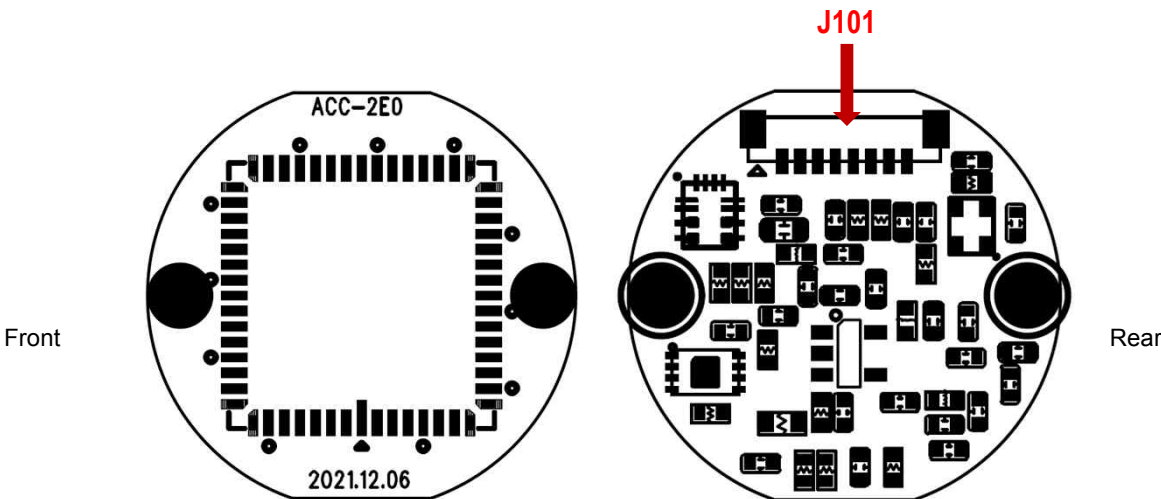
Specifications

Model	ACC-2E0
Signal System	AHD 2.0
Pickup Device	1/2.7"(D-6.6mm) 2.09M CMOS Sensor
Scanning System	Progressive Scan (16:9)
Sync. System	Internal
Total Pixels	2.27MP [2026(H)x1122(V)]
Active Pixels	2.09MP [1928(H)x1088(V)]
Min. Illumination	2.0Lux(F2.0 – 30IRE)
Mechanical ICR	N/A
Resolution	1080p@25/30
Video Out (BNC)	AHD: 1080p@25/30 or TVI
Lens	Fixed IRIS lens
Lens (Mount)	Lens Holder is not available. Housing with a lens holder is required
OSD	Via UTC
Exposure	AE
White Balance	AWB
BLC	N/A
Day & Night Mode	Color(Default), Auto, B/W
Gain Control	Auto (Off, Low, Mid, High)
Electronic Shutter	1/50(60) ~ 1/2,000sec
DSS(Sens-up)	N/A
Noise Reduction	2DNR
Mirror	Off(Default), On(H, V, H/V)
Other Features	
Microphone	N/A
Power Source	DC 3.3V ±5%
Power Consumption	Less than 0.85 Watts (250mA@DC3.3V)
Operating Temp.	-10℃ ~ 55℃ (Humidity :0%RH ~ 90%RH)
Size (mm)	19.4Ø (1-board)
Weight	2.0 g (Without OLPF)

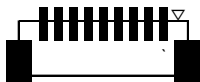
ACC-1C0

CMOS VIDEO MODULE

Pin Connections



J101



No.	Pin Item	I/O	Comments
1	DC3.3V	IN	DC3.3V±5%
2	GND		
3	AHD	OUT	Analog HD Output
4	GND		
5	SCL_M	IN	F/W Download
6	SDA_M	IN/OUT	F/W Download
7	SCL_S	IN	Tuning
8	SDA_S	IN/OUT	Tuning

Wafer Type: **0.8mm pitch – 8 pin /SMD**

Manufacturer: **JST**

MFG Part Number: **BM08B-SURS-TF**

** Important Notice

**Customer must use 08SUR-32S [AWG #32 (0.5A)].
Do not use the part at AWG #36 (0.2A).**

Camera	Image Device	1/2.7”(D-6.6mm) type Clairpixel Color WDR CMOS (CP8320)
	Scanning System	Progressive Scan
	Total Pixels	2026(H) x 1122(V) : 2.27Mega pixels
	Active Pixels	1928(H) x 1088(V) : 2.09Mega pixels
	Lens fitted	N/A
	Min. Illumination	2.0Lux @ F2.0 – 30IRE
	Sync System	Internal
	Electronic Shutter	50Hz : 1/50~20,000sec 60Hz : 1/60~20,000sec
Video	Output 1	AHD (or TVI)
	Output 2	
	Output 3	
OSD	On Screen Display	Available (Via UTC)
	Language	English
	Exposure	AUTO, MANUAL
	White Balance	AWB
	WDR	Yes
	Day & Night	Color(Default), B/W
	Gain Control	Auto (Off, Low, Mid, High)
	Sens-up (DSS)	N/A
	DNR	2D-DNR
	Image Effect	Mirror / Flip
	Special Functions	
	Communication	
Serial	Communication	
Others	Operating Temperature	14°F~131°F (-10℃~+55℃)
	Storage Temperature	-4°F~149°F (-20℃~+65℃)
	Humidity	0 ~ 90% RH
	Power Consumption	DC3.3V(±5%), Max. 250mA
	Size & Weight	19.4Ø – 1 PCB board / 2.0g