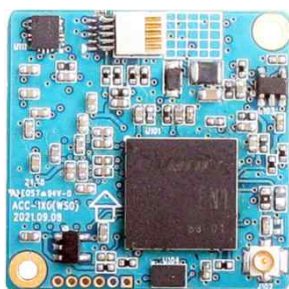
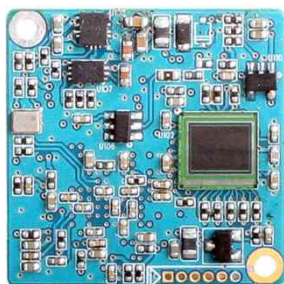


ACC-1X0

CMOS VIDEO MODULE

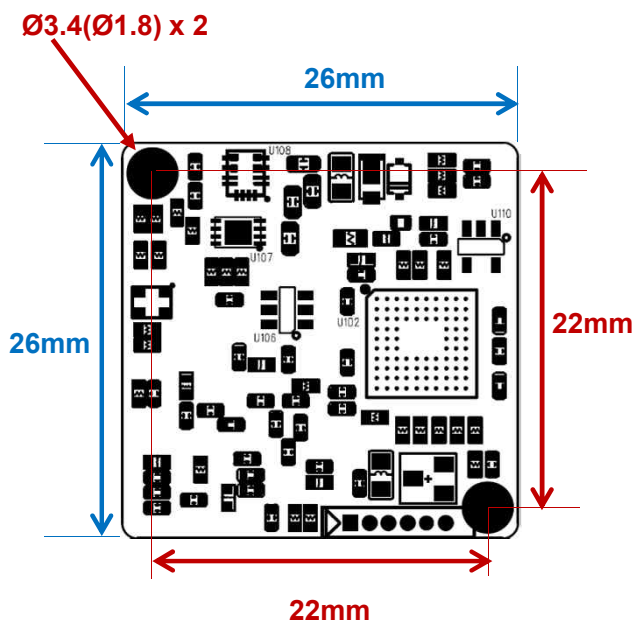


Main Features

- 1/2.8" Sony 2.0μm Pixel Progressive Starvis Color CMOS Sensor
- Approx. 5.11 Mega Pixels (D1)
- No lens holder supported
- WDR / 3D-DNR / DSS (Sens-up) Supported
- OSD port
- Running Voltage : DC15V
- CMOS Video Module (26x26mm 1-board)



Dimension



PCB T = 1.2mm

Option

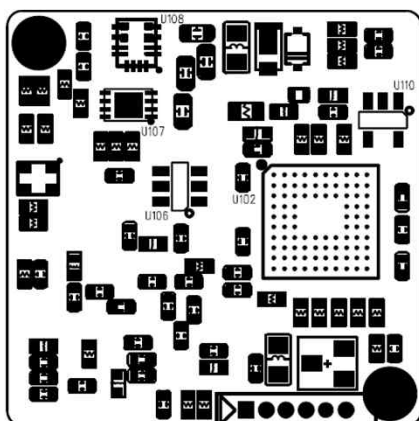
Specification

Model	ACC-1X0
Signal System	CVBS
Pickup Device	1/2.8"(D-6.52mm) 5.11M Sony CMOS Sensor
Scanning System	Progressive Scan (4:3)
Sync. System	Internal
Total Pixels	5.69MP [2,704(H)x2,104(V)]
Active Pixels	5.11MP [2,608(H)x1,960(V)]
Min. Illumination	0.01Lux(F2.5 - 30IRE), 0.0003Lux(DSS on)
Mechanical ICR	N/A
Video Out	D1 (75Ω 1V p.p)
Lens	Fixed IRIS Lens
Lens (Mount)	Lens Holder is not available
OSD	Via OSD Port (GPIO Type)
Camera Title	Off, On(Max. 8 Characters)
Language	English, Chinese(Simplified), Chinese(Traditional), Japanese, Korean
Exposure	Auto (ELC)
White Balance	AUTO, AUTOext, Preset, Manual
BLC	Off, HLC, BLC, WDR
Day & Night Mode	AUTO, COLOR, B/W
Gain Control	AGC (0~10)
Electronic Shutter	Auto, Manual, Flickerless
DSS(Sens-up)	X32
Noise Reduction	3DNR (Off, Low, Middle, High)
Mirror	Off, On(Mirror, Flip)
Other Features	ACE, Defog, Gamma, Shading etc.
Communication	N/A
Microphone	N/A
Power Source	DC 15V(±10%)
Power Consumption	Less than 1.8 Watts (120mA@DC15V)
Operating Temp.	-10℃ ~ 55℃ (Humidity :0%RH ~ 90%RH)
Size (mm)	26x26 1-board
Weight	3 g

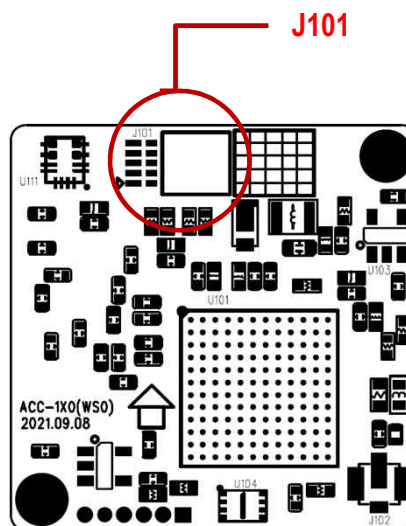
ACC-1X0

CMOS VIDEO MODULE

Pin Connections



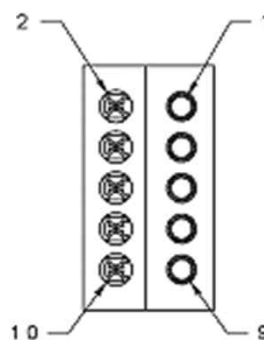
Front



Rear

J101 – I/O Interface

No.	Pin Item	I/O	Comment
1	GND		
2	KEY_UP	IN	
3	GND		
4	KEY_RIGHT	IN	
5	UN_15V	IN	
6	KEY_ENTER	IN	
7	GND		
8	KEY_LEFT	IN	
9	CVBS_OUT	OUT	
10	KEY_DOWN	IN	



Wafer SMD type: **0.64mm pitch – 10 pin**
 Manufacturer: **Omnetics Connector Corporation**
 MFG Part Number: **PZN-10-AA (A79618-001)**

SETUP MENU	SUB MENU 1	SUB MENU 2	SUB MENU 3	VALUE
EXPOSURE	BRIGHTNESS			0 ~ 20
	SHUTTER	AUTO		NORMAL/DEBLUR
		MANUAL		NTSC : 1/30,60,120,250,500,1K,2K,4K,8K,15K,30K PAL : 1/25,50,100,200,400,800,1.6K,3.2K,6.4K,12.8K,25.6K
		FLICKER		
	SENS-UP			OFF/ X2/ X4/ X8 / X16 / X32
	AGC			0 ~ 10
BACKLIGHT	OFF			
	HLC	LEVEL		0 ~ 20
		COLOR		BLK,WHT,YEL,CYN,GRN,MAG,RED,BLU
	BLC	H-POS		0 ~ 20
		V-POS		0 ~ 20
		H-SIZE		0 ~ 20
		V-SIZE		0 ~ 20
	WDR	WEIGHT		LOW/ MIDDLE/ HIGH
DAY&NIGHT	AUTO	D>N THRES		0(bright) ~ 20(dark)
		N>D THRES		0(bright) ~ 20(dark)
		DELAY		0 ~ 9sec, 10sec, 15sec
		BURST		OFF/ON
	COLOR			
	B&W			
WHITE BAL	AWB	AUTO		
		AUTOext		
		PRESET		Press ENTER key
		MANUAL	C-TEMP.	3000K/ 5000K/ 8000K
			R-GAIN	0 ~ 20
			B-GAIN	0 ~ 20
	COLOR GAIN			0 ~ 20
DNR				OFF/ LOW/ MIDDLE/ HIGH
IMAGE	SHARPNESS			0 ~ 10
	GAMMA			0.45/ 0.55/ 0.65/ 0.75
	MIRROR			OFF/ON
	FLIP			OFF/ON
	ACE			OFF/LOW/ MIDDLE/ HIGH
	DEFOG	OFF		
		ON	MODE	AUTO/MANUAL
			LEVEL	LOW/ MIDDLE/ HIGH
	SHADING	OFF		
		ON	WEIGHT	0~100%
SYSTEM	FREQ(NT/PAL)			NTSC/PAL
	LANGUAGE			ENGLISH / CHINESE / CHINESE(S) / JAPANESE / KOREAN
	CAM TITLE	OFF		
		RIGHT UP		0 ~ 9, A ~ Z, blank
		LEFT DOWN		0 ~ 9, A ~ Z, blank
FACTORY DEFAULT				Reset to factory setting
EXIT				Exit SETUP menu