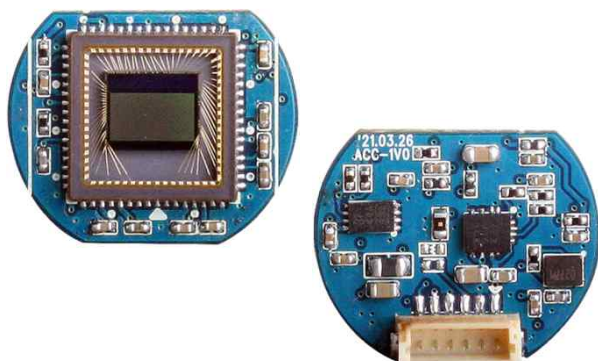


ACC-1V0

CMOS VIDEO MODULE

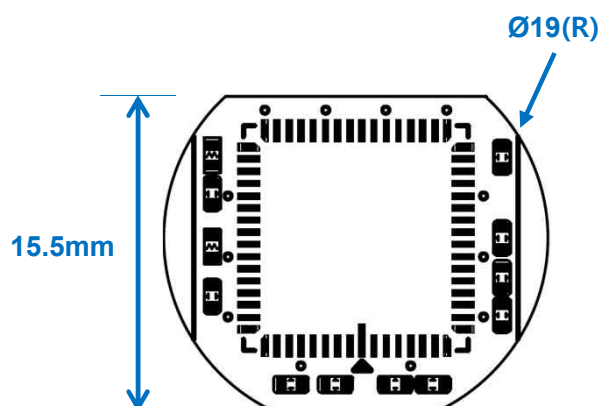


Main Features

- 1/2.9" 2.8μm Pixel Progressive Color CMOS Sensor
- 2.09M Pixels – Maximum 1080p (1920x1080p)
- Mountable Lens: Fixed, Pinhole, Manual VF Lens
- 2D-DNR Supported
- Operation Voltage : DC3.3V
- AHD2.0 Camera



Dimension



PCB T = 1.0mm

Option

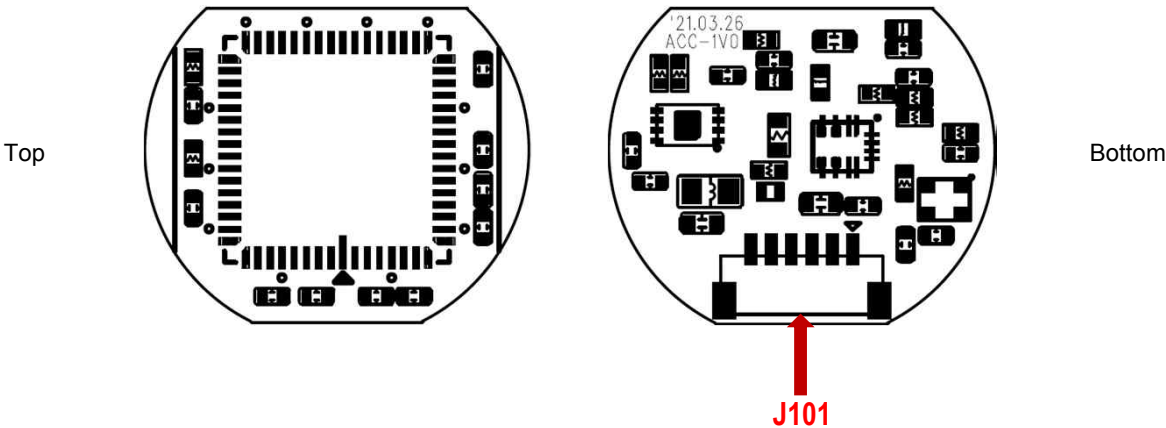
Specifications

Model	ACC-1V0
Signal System	AHD 2.0
Pickup Device	1/2.9"(D-6.2mm) 2.09M CMOS Sensor
Scanning System	Progressive Scan (16:9)
Sync. System	Internal
Total Pixels	2.14MP [1932(H)x1108(V)]
Active Pixels	2.09MP [1928(H)x1088(V)]
Min. Illumination	2.0Lux(F2.5 - 30IRE)
Mechanical ICR	N/A
Resolution	1080p@25/30
S/N Ratio	Max. 49.6dB
Video Out (BNC)	AHD: 1080p@25/30 or other Analog HD Formats
Lens	Option
Lens (Mount)	N/A
OSD	N/A
Exposure	AE
White Balance	AWB
BLC	N/A
Day & Night Mode	Color(Default), Auto, B/W
Gain Control	Auto (Off, Low, Mid, High)
Electronic Shutter	1/25(30) ~ 1/25,600(30,000)
DSS(Sens-up)	N/A
Noise Reduction	2DNR
Mirror	Off(Default), On(H, V, H/V)
Other Features	Parking Line etc.
Microphone	N/A
Power Source	DC 3.3V
Power Consumption	Less than 0.5 Watts (150mA@DC3.3V)
Operating Temp.	-10℃ ~ 55℃ (Humidity :0%RH ~ 90%RH)
Size (mm)	Approx. Ø19 x 15.5mm (1-board)
Weight	1.0 g (Without OLPF)

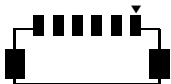
ACC-1V0

CMOS VIDEO MODULE

Pin Connections



J101 – Power & 232C



No.	Pin Item	No.	Pin Item
1	DC3.3VIN	4	GND
2	GND	5	SCL (I2C - SCK)
3	Video OUT (AHD)	6	SDA (I2C - DAT)

Wafer SMD type: **1.0mm pitch – 6 pin**

Manufacturer: **JST**

MFG Part Number: **BM06B-SRSS-TB**