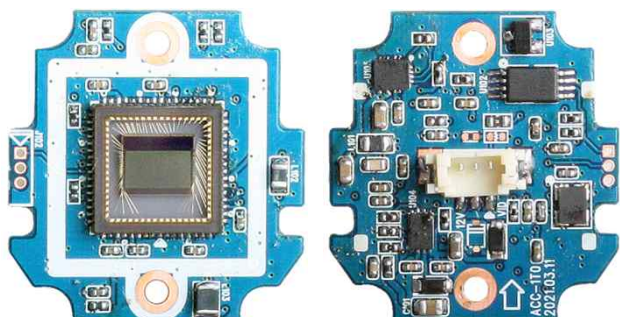


ACC-1T0

CMOS VIDEO MODULE

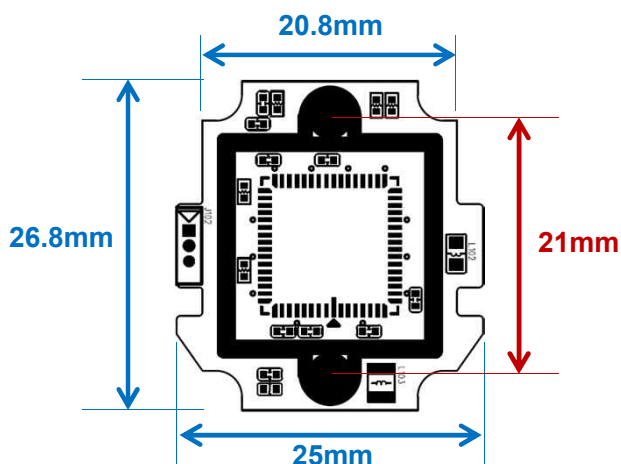


Main Features

- 1/2.9" 2.8μm Pixel Progressive Color CMOS Sensor
- 2.09M Pixels – Maximum 1080p (1920x1080p)
- Mountable Lens: Fixed, Pinhole, Manual VF Lens
- 2D-DNR Supported
- Operation Voltage : DC5~15V
- AHD2.0 Camera



Dimension



Option

- Lens

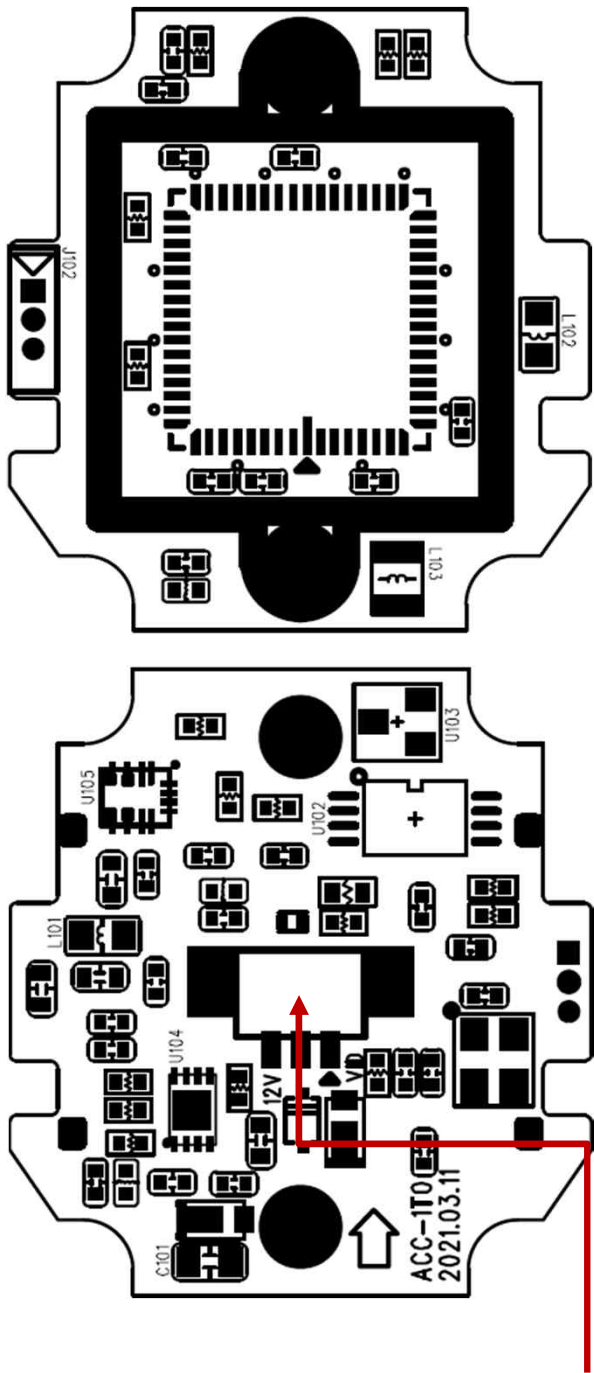
Specifications

Model	ACC-1T0
Signal System	AHD 2.0
Pickup Device	1/2.9"(D-6.2mm) 2.09M CMOS Sensor
Scanning System	Progressive Scan (16:9)
Sync. System	Internal
Total Pixels	2.14MP [1932(H)x1108(V)]
Active Pixels	2.09MP [1928(H)x1088(V)]
Min. Illumination	2.0Lux(F2.5 - 30IRE)
Mechanical ICR	N/A
Resolution	1080p@25/30
S/N Ratio	Max. 49.6dB
Video Out (BNC)	AHD: 1080p@25/30 or other Analog HD Formats
Lens	Option
Lens (Mount)	Fixed IRIS Lens Board, Pinhole, VF type – M12
OSD	N/A
Exposure	AE
White Balance	AWB
BLC	N/A
Day & Night Mode	Color(Default), Auto, B/W
Gain Control	Auto (Off, Low, Mid, High)
Electronic Shutter	1/25(30) ~ 1/25,600(30,000)
DSS(Sens-up)	N/A
Noise Reduction	2DNR
Mirror	Off(Default), On(H, V, H/V)
Other Features	Parking Line etc.
Microphone	N/A
Power Source	DC 5~15V
Power Consumption	Less than 0.5 Watts (40mA@DC12V)
Operating Temp.	-10℃ ~ 55℃ (Humidity :0%RH ~ 90%RH)
Size (mm)	Approx. 26.8mm x 25mm (1-board)
Weight	2.5 g (Without OLPF)

ACC-1T0

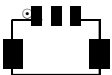
CMOS VIDEO MODULE

Pin Connections



J101

J101



No.	Pin Item	No.	Pin Item
1	VIDEO	2	GND
3	DC5~15V		

Wafer SDM Type: **1.25mm pitch – 3 pin / SMD**
Manufacturer: **YEONHO**
MFG Part Number: **12505WS-03B**