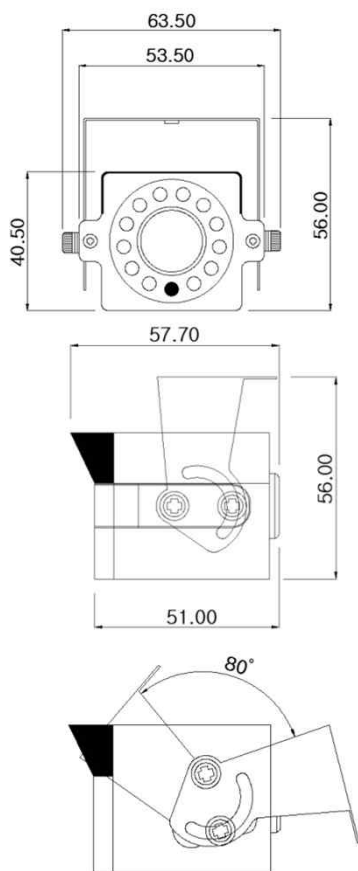


# DIR-NF967-25(P)

## OUTDOOR IP CAMERA



### Dimension



### Option

- Lens (Fixed)  
f= 2.8mm, 3.6mm, 4mm, 6mm, 8mm, 12mm, 16mm
- Wall-mount Bracket

### Main Features

- 1/2.8" 2MP Sony Starvis CMOS Sensor
- 2 Mega Pixels (Max. 1080p25/30)
- f=25mm M/P Lens (ICR)
- 12pcs of 940nm IR LEDs
- WDR, DSS(Sens-up), 3DNR Supported
- Onvif Ver. 17.06 Compatible with H.264, and MJPEG
- Water-proof Housing (IP66)



### Specifications

Model	DIR-NF967-25	DIR-NF967-25P
Signal System	IP (Network) – RTOS	
Pickup Device	<b>1/2.8"(D-6.46mm) 2.12M Sony CMOS Sensor</b>	
Scanning System	Progressive Scan (16:9)	
Total Pixels	2.16MP [1,945(H)x1,109(V)]	
Active Pixels	2.12MP [1,937(H)x1,097(V)]	
Min. Illumination	0.1Lux, 0Lux (IR on)	
No. of IRED	<b>12ea (940nm)</b>	
Video Out (RJ45)	<b>Up to 30fps @ 1920x1080p</b> (1920x1080, 1280x1024, 1280x960, 1280x720, 1024x768, 640x480, 320x240)	
Lens	<b>f=25mm, F2.5</b>	
Lens (Mount)	Board type (M12)	
Angle of View	<b>13°(D), 11°(H), 6°(V)</b>	
OSD	Via Webpage Viewer	
Camera Title	Off, On(Max. 8 Characters)	
Language	English	
White Balance	AUTO, AUTOext, Preset, Manual	
WDR	<b>Off, On(Low, Middle, High)</b> WDR can't work together with 3D-NR or DSS	
Day & Night Mode	Auto, Color, B&W	
Electronic Shutter	1/25(30)~1/30,000sec	
Noise Reduction	Off, On(Low, Middle, High) DNR can't work together with WDR or DSS	
DSS(Sens-up)	<b>X32</b> DSS can't work together with WDR or DNR	
Mirror	Off, On(Mirror, Flip)	
Other Features	Motion Detection(4 Zones), Privacy Mask(8 Zones), Defog, Gamma Etc.	
Network Protocol	TCP/IP, UDP/IP, RTP, RTSP, RTCP, NTP, HTTP DHCP, FTP, SMTP, DNS, DDNS Onvif 17.06 Compatible	
At-a-time Access	Maximum 3 users	
Video/Audio Codec	H.264, MJPEG (Duplex Streaming)	
Sensor In/Alarm Out	N/A	
Audio Line In/Out	N/A	
Power Source	<b>DC12V (Non-POE Ver.)</b> <b>IP Cable: 600±10mm</b>	<b>DC12V / POE (Cable POE: 260mm±15mm)</b>
Power Consumption	Less than 2.9Watts (240mA)	
Operating Temp.	-10℃ ~ 55℃ (Humidity :0%RH ~ 90%RH)	
Size (mm)	63.5(W) x 40.5(H) x 57.7(D) (Without Bracket)	
Weight	240g (gift-box packing)	

# DIR-NF967-25(P)

## OUTDOOR IP CAMERA

### • IP camera connection

Connect LAN cable to RJ45 jack of camera

Connect the other end LAN cable to RJ45 jack of router or hub

If you are not using POE switcher to provide the power to the IP camera, connect regulated a DC12V power adaptor to the IP camera.

Wait for about 30 seconds until the camera initialization is completed

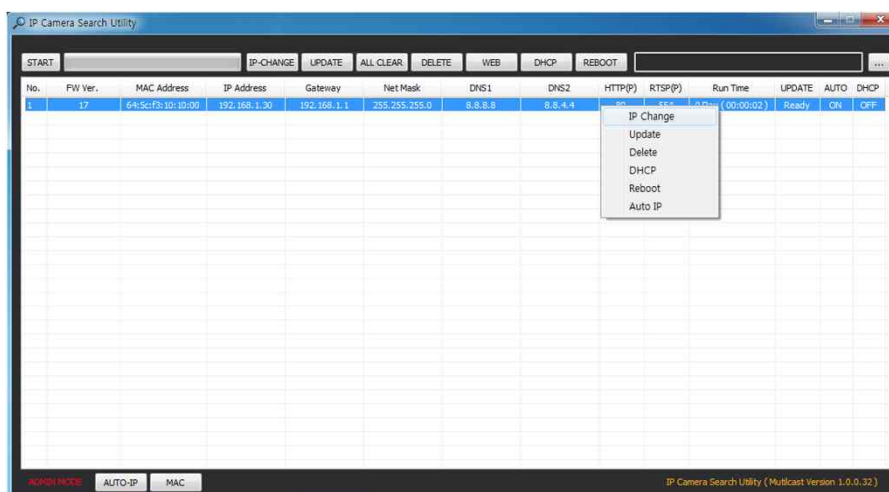
Factory Default IP address is **192.168.1.30**

Factory Default ID & Password are **admin / admin**.

### • Using IP Cam Search

You can simply change the IP address by using 'IP Cam Search' provided.

Run IP Cam Search as administrator. Click "START" button when the IP camera is connected to your PC or network, all IP address will appear. This program can be downloaded from the SUPPORT section of our web site at [www.parantek.com](http://www.parantek.com).



Choose & change the IP address of camera you want to change and click "IP change"



After click the "IP Change" button left window will be appeared. Once you click "Apply" button, the camera will reboot for 10second.

After reboot the camera, the changed IP address will be applied and appeared.

### • Checking Video by Web Viewer

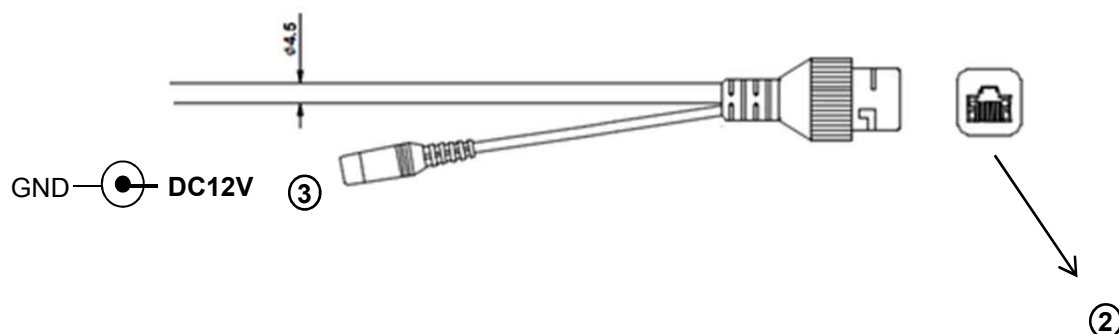
Run web browser and Input the IP address which taken from IP Search.

### • Supported O/S & Web Browser

- O/S : Windows7, 8, 10, MAC
- Browser : Internet Explorer 11 or higher, Chrome , Firefox, Safari, Opera

# Cable Connection Interface

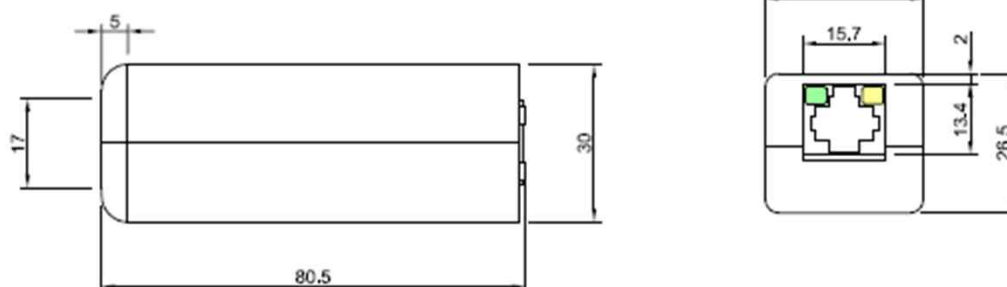
## DIR-NF967-25



## DIR-NF967-25P



Dimension of POE on cable



	Function	I/O	Note	Remarks
①	POWER	IN	Camera power input (Not required when POE works)	DC12V
②	VIDEO/POE/CONTROL	IN/OUT	H.264 video output, Power over Ethernet, Control (RJ45)	
③	POWER	IN	Camera power input (Required all the time)	DC12V