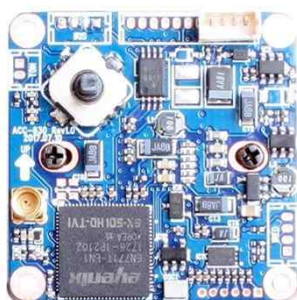
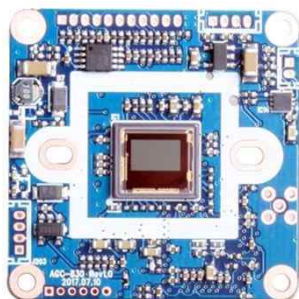


# DCC-830

## CMOS VIDEO MODULE

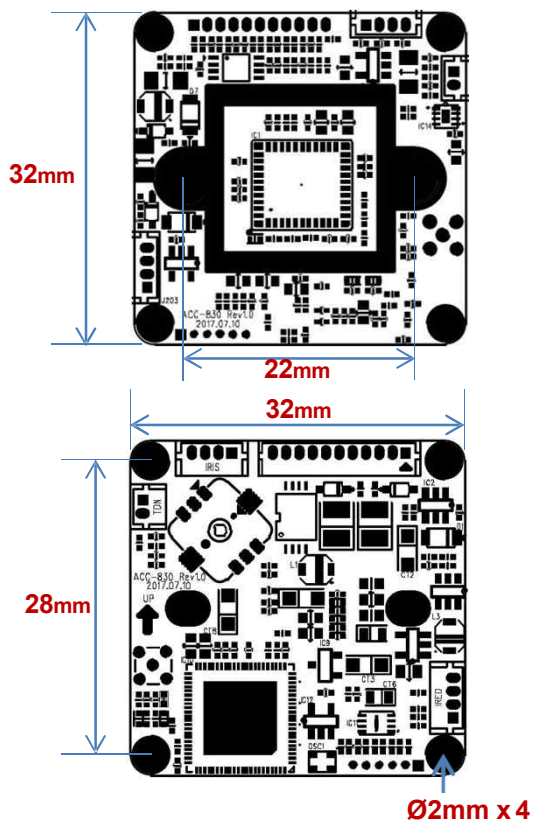


### Main Features

- 1/3" Panasonic 2.75μm Pixel Progressive Color CMOS Sensor
- 2Mega Pixels – Maximum 1080p(1920x1080p)
- Mountable Lens: Fixed, Pinhole, DC Auto VF Lens
- ICR Mechanism Available
- WDR, 3D-DNR, DSS (Sens-up) Supported
- Built-in OSD Switch (AD type Supported)
- HD-SDI Video Out (CVBS Out Mode ConditionallySupported)
- EX-SDI Ver. I & II Modes Supported
- CMOS Video Module (32x32mm 1-board)



### Dimension



### Option

- Mechanical ICR
- Lens

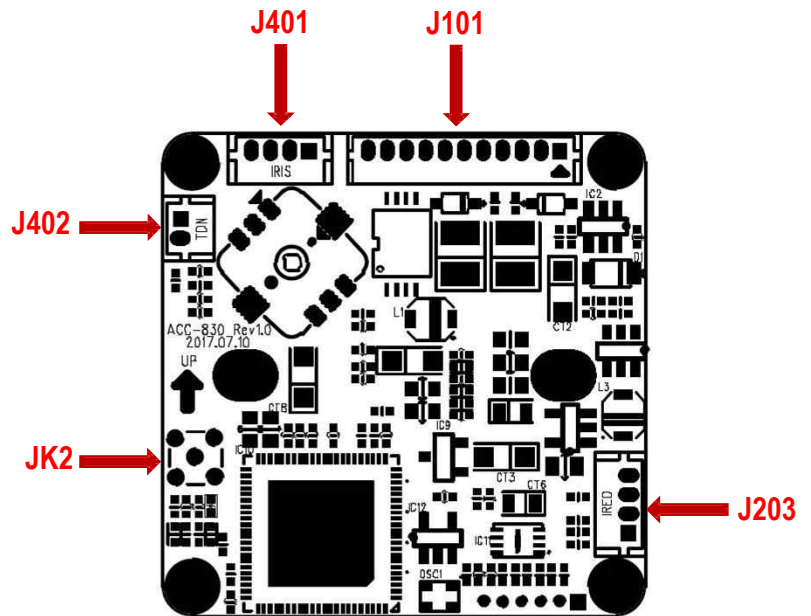
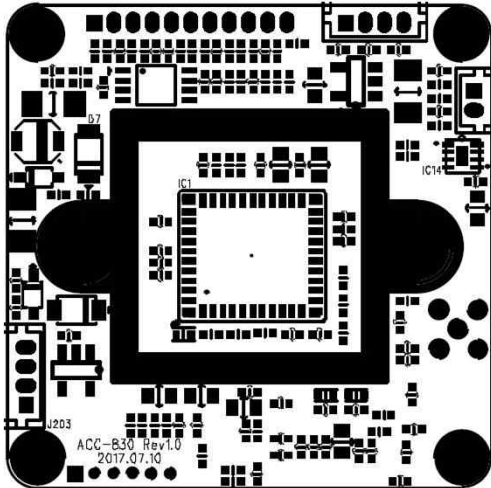
### Specifications

Model	DCC-830
Signal System	HD-SDI (Serial Data Interface) or EX-SDI
Pickup Device	<b>1/3"(D-6mm) 2.12M Panasonic CMOS Sensor</b>
Scanning System	Progressive Scan (16:9)
Sync. System	Internal
Total Pixels	2.47MP [1956(H)x1266(V)]
Active Pixels	2.12MP [1944(H)x1092(V)]
Min. Illumination	<b>0.1Lux(F2.5-30IRE), 0.05Lux(ICR on), 0.003Lux(DSS on)</b>
Mechanical ICR	<b>Available (Option)</b>
S/N Ratio	More than 50dB (AGCoff)
Video Out (BNC)	<b>HD-SDI or EX-SDI: 1080p@25/30, 720p@25/30/50/60</b>
Lens	Option
Lens (Mount)	<b>Fixed &amp; DC IRIS Lens Board, Pinhole, VF type – M12 &amp; Ø14</b>
OSD	Via 5-direction Tact-switch
Camera Title	Off, On(Max. 8 Characters)
Language	English, Chinese(Simplified), Chinese(Traditional), Japanese, Korean
Exposure	DC, Manual
White Balance	AWB, ATW, Push, Manual
BLC	<b>Off, BLC, HLC, WDR</b>
Day & Night Mode	AUTO, COLOR, B/W, IR_EXT
Gain Control	AGC (0~20)
Electronic Shutter	1/25(30)~1/25,600(30,000)sec
DSS(Sens-up)	<b>Off, On(Max. X32)</b>
Noise Reduction	<b>3DNR</b>
Mirror	Off, On(Mirror, Flip, Both)
Other Features	Motion Detection (4 Zone), Privacy Mask (16 Zones), Defog etc.
Power Source	DC 12V
Power Consumption	Less than 2 Watts (160mA@DC12V)
Operating Temp.	-10℃ ~55℃ (Humidity :0%RH ~ 90%RH)
Size (mm)	<b>32x32 1-board</b>
Weight	4.5 g (without OLPF)

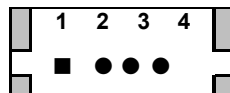
# DCC-830

## CMOS VIDEO MODULE

### Pin Connections



#### J401 – DC IRIS



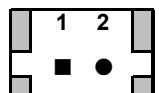
No.	Pin Item	No.	Pin Item
1	DMP+	3	DRV+
2	DMP-	4	GND

Wafer DIP type: **1.25mm pitch – 4pin**

Manufacturer: **Molex**

MFG Part Number: **53047-0410**

#### J402 – TDN ICR



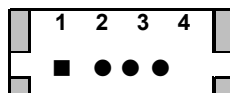
No.	Pin Item	No.	Pin Item
1	ICR (+)	2	ICR (-)

Wafer DIP type: **1.25mm pitch – 2pin**

Manufacturer: **Yeonho**

MFG Part Number: **12512WS-02B**

#### J203 – IR LED Board



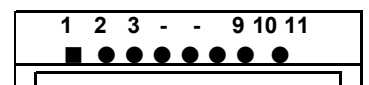
No.	Pin Item	No.	Pin Item
1	DC12V	3	EXT_DN (CDS)
2	GND	4	D&N OUT

Wafer DIP type: **1.25mm pitch – 4pin**

Manufacturer: **Molex**

MFG Part Number: **53047-0410**

#### J101 – User Interface



No.	Pin Item	No.	Pin Item
1	VIDEO	7	TTL 3.3V TXD
2	GND	8	TTL 3.3V RXD
3	DC12V	9	GND
4	GND	10	EXT 3.3V
5	OSD KEY SET (AD)	11	MOTION OUT
6	EXT VIDEO		

Wafer DIP type: **1.25mm pitch – 11pin**

Manufacturer: **Yeonho**

MFG Part Number: **12512WS-11B**

#### JK2 – HD-SDI Out - MMCX

SETUP MENU	SUB MENU1	SUB MENU2	SUB MENU3	SUB MENU4	VALUE
LENS	DC	MODE	OUTDOOR		
			DEBLUR		
			INDOOR		
	MANUAL	MODE	NOMAL		
			DEBLUR		
EXPOSURE	BRIGHTNESS				0~20
	AGC				0~20
	SHUTTER MODE	AUTO			
		MANUAL			
		FLIKERLESS			
	SHUTTER SPEED				1/25(30), 1/50(60), 1/100(120),1/200(250), 1/400(500), 1/800(1,000),1/1600(2,000), 1/3200(4,000), 1/6400(8,000), 1/12800(15,000), 1/25600(30,000)
	SENS-UP				OFF, X2, X4, X8, X16, X32
WHITE BALANCE	AWB				
	ATW				
	PUSH LOCK				
	MANUAL	COLOR TEMP.			3000K, 5000K, 8000K
		R-GAIN			0~20
		B-GAIN			0~20
BACKLIGHT	WDR	MODE	NORMAL		
			ROI	WINDOW MODE	0~3
				WINDOW SEL	ON/OFF
				H-POS	0~1920
				V-POS	0~1080
				H-SIZE	0~1920
				V-SIZE	0~1080
			WEIGHT		
	OFF				
	HLC	LEVEL			0~20
		COLOR			BLK, WHT, YEL, CYN, GRN, MAG, RED, BLU
	BLC	H-POS			0~20
		V-POS			0~20
		H-SIZE			0~20
		V-SIZE			0~20
	DNR				
DAY & NIGHT	AUTO	DWELL TIME			0~9 SEC
		AGC THRES			0~20
		AGC MARGIN			0~20
	COLOR				
	B&W				
	IR_EXT	DWELL TIME			0~9 SEC
		D->N LEVEL			0~20
		N->D LEVEL			0~20
		SMART IR			OFF/ON
		LEVEL			0~20

SETUP MENU	SUB MENU1	SUB MENU2	SUB MENU3	SUB MENU4	VALUE
IMAGE	SHARPNESS	SDI & CVBS			0~10
		HDC			0~10
		HDT			0~10
		HAD			0~10
	COLOR LEVEL				0~20
	MIRROR				OFF/ ON
	FLIP				OFF / ON
	GAMMA				0.45, 0.55, 0.65, 0.75
	ACE				OFF, LOW, MIDDLE, HIGH
	DEFOG	OFF			
ON		MODE		MANUAL / AUTO	
		LEVEL		LOW, MIDDLE, HIGH	
SPECIAL	COM. ADJUST	CAM ID			0~255
		BAUDRATE			2400, 4800, 9600, 19200, 38400, 57600, 115200
		PROTOCOL			PELCO-D
		SET DONE			ON
	PRIVACY	OFF			
		ON	MASK SEL		0~15
			MASK MODE		OFF / ON
			H-POS		0~60
			V-POS		0~34
			H-SIZE		0~60
			V-SIZE		0~34
			Y LEVEL		0~20
			CB LEVEL		0~20
			CR LEVEL		0~20
			TRANS		0~3
	MOTION	OFF	DET WINDOW	WINDOW SEL	0~3
		ON		WINDOW MODE	OFF / ON
				DET H-POS	0~60
				DET V-POS	0~34
				DET H-POS	0~60
				DET V-SIZE	0~34
				DET TONE	0~4
				MDRECT FILL	OFF / ON
				SENSITIVITY	0~10
				MOTION OSD	OFF / ON
				TEXT ALARM	OFF / ON
				SYSTEM	VIDEO OUTPUT
SDI OUTPUT		** DCC-830 mode (SDI, EX-SDI, EX-SDI II) HD-SDI / 270M(V1.0) / 135M(V2.0)			
ANALOG OUTPUT		** ACC-830 mode CVBS / HDA / HDT / HDC			
FRAM RATE			720_25(30)P / 720_50(60)P / 1080_25(30)P		
FREQ(NT/PAL)			50HZ(PAL) / 60HZ(NTSC)		
LANGUAGE			ENG, CHN, CHN(S), JPN, KOR		
CAM TITLE			OFF / RIGHT UP / LEFT DOWN /		
FACTORY DEFAULT				Reset to factory setting	
EXIT	SAVE & END			Exit SETUP menu after saving	
	CANCEL			Exit SETUP menu without saving	