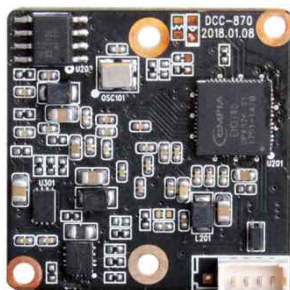
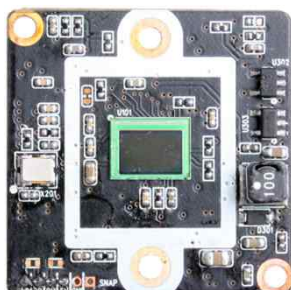


DCC-870

CMOS USB VIDEO MODULE

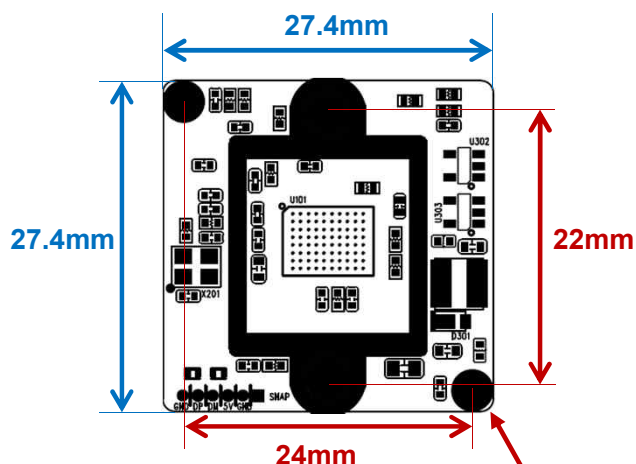


Main Features

- 1/2.9" 2.8μm Pixel Progressive Sony Exmor CMOS Sensor
- 2 Mega Pixels – Maximum 1080p (1920x1080)
- Mountable Lens: Fixed, Pinhole, Manual VF Lens
- Excellent Quality of Motion JPEG
- USB2.0 Compliant
- Best for ATM, Kiosk, POS, Face Recognition, Gaming Applications
- Snap-shot Feature Supported (870S series)
- CMOS USB2.0 Video Module (27.4x27.4mm 1-board)



Dimension



Ø3.5(2.1mm hole x 2)
PCB Coordinate (-12, 12) (12, -12)

Option

- OLPF
- Lens Holder
- Lens
- Snap-shot (DCC-870S)

Specification

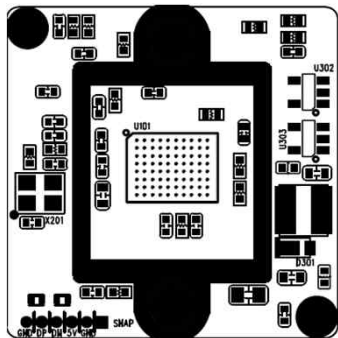
Model	DCC-870 / DCC-870S
Signal System	MJPEG Encoded
Pickup Device	1/2.9"(D-6.23mm) 2.1M SONY Exmor CMOS Sensor
Scanning System	Progressive Scan (16:9)
Sync. System	Internal
Total Pixels	2.24M [2001(H)x1121(V)]
Active Pixels	2.12M [1936(H)x1097(V)]
Min. Illumination	0.3Lux
Mechanical ICR	N/A
Video Out	MJPEG: 1080p(1920x1080)
Capturing Speed	Max. 25/30fps in MJPEG (50/60Hz)
Lens	Option
Lens (Mount)	Board Mount(M12)
OSD	N/A
Exposure	Auto
White Balance	Auto
Day & Night Mode	Color (Factory Default)
Gain Control	Auto
Electronic Shutter	Auto
Mirror	Off (Factory Default)
Supported O/S	UVC Compatible O/S <ul style="list-style-type: none">- Windows (CE/XP/Vista/Win7/Win8)- Linux(2.6.26 or later), Mac, Android etc.
No. of Camera ID	Up to 1 per PC
Power Source	DC5V via USB(bus-powered, 500mA)
Operating Temp.	-10℃ ~ 55℃ (Humidity :0%RH ~ 90%RH)
Size (mm)	27.4(W) x 27.4(D) – 1 Board
Weight	3.5 g (Without OLPF & Lens Holder)

DCC-870

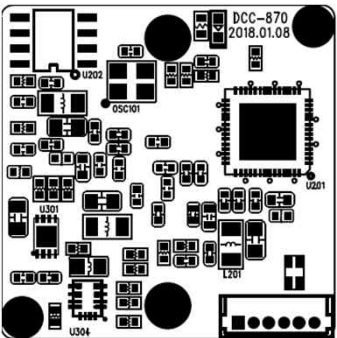
CMOS USB VIDEO MODULE

Pin Connections

Board Front

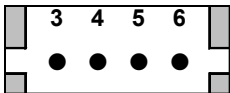


Board Rear



J101

J101

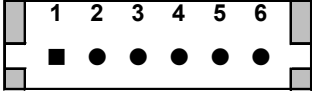


No.	Pin Item	No.	Pin Item
3	DC 5V	5	DP
4	DM	6	GND

Wafer DIP type: 1.25mm pitch – 4 pin
Manufacturer: **Molex**
MFG Part Number: **53047-0410**

<DCC-870>

J101



No.	Pin Item	No.	Pin Item
1	SNAP SHOT(NH, Act.-L)	4	DM
2	GND	5	DP
3	DC 5V	6	GND

Wafer DIP type: 1.25mm pitch – 6 pin
Manufacturer: **Yeonho**
MFG Part Number: **12512WS-06B**

<DCC-870S>